



# ADA Compliance Program



## Clark County Facilities Transition Plan

Dolle Building – 500 West 8<sup>th</sup> Street

Vancouver, WA

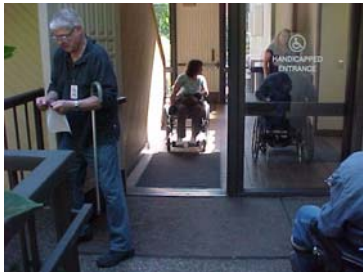
Date of Survey: September 10, 2007

Conducted by: Wayne Yarnall, Jesse Magana, Tim McVicker, Connie Brittain, Bud Van Cleve

Photo	Item – Issues – Location – Code - Notes
	<p>Item # 1</p> <p>Issue: Accessible Parking Area</p> <p>Issue:</p> <p>Location: North Parking Lot</p> <p>Code: WAC 1106.6 Location - Accessible parking spaces shall be located on the shortest accessible route of travel from adjacent parking to an accessible building entrance. In parking facilities that do not serve a particular building, accessible parking spaces shall be located on the shortest route to an accessible pedestrian entrance to the parking facility. Where buildings have multiple accessible entrances with adjacent parking, accessible parking spaces shall be dispersed and located near the accessible entrances. <u>Wherever practical, the accessible route shall not cross lanes of vehicular traffic.</u> Where crossing traffic lanes is necessary, the route shall be designated and marked as a crosswalk.</p> <p>Notes: The current accessibility parking area provides marked pathways on the traffic side of the parking stalls to the north entrance of the building. Pathways in traffic areas shall be avoided if there are alternative means of providing accessible pathways.</p> <p>There appears to be adequate space on the south side of the accessible parking area to construct a paved pathway to the north entrance ramp. Curb cuts and truncated domes would be required along the pathway as needed.</p>
	<p>Item # 2</p> <p>Issue: Handrails</p> <p>Issue:</p> <p>Location: North Entrance Ramp</p> <p>Code: ANSI 505.2 Location – Handrails shall be provided on both sides of stairs and ramps.</p> <p>Notes:</p>



Item # 3  
Issue: Handrail Extensions  
Issue:  
Location: North Entrance Ramp  
Code: ANSI 505.10.1 Top and Bottom Extension at Ramps – Ramp handrails shall extend horizontally above the landing 12 inches minimum beyond the top and bottom of ramp runs. Extensions shall return to a wall, guard of floor, or shall be continuous to the handrail of an adjacent ramp run.  
Notes:



Item # 4  
Issue: Main entrance Threshold Height – Current height  $\frac{3}{4}$  inches  
Issue: East entrance Threshold Height – 1  $\frac{1}{2}$  inches  
Location: Main entrance North Side of Building  
East entrance – Ground Floor  
Code: ANSI 404.2.4 Thresholds at Doorways – If provided, thresholds at doorways shall be  $\frac{1}{2}$  inches maximum in height.  
Notes:



Item # 5  
Issue: Signage for Accessibility: Inaccessible building entrances  
Issue:  
Location: North entrance to Superior Court Clerk's Office, West entrance to building and East entrance to building  
Code: IBC 1110.2 - Directional Signage  
Directional signage indicating the route to the nearest like accessible element shall be provided. These directional signs shall include the International Symbol of Sign Sample: Signs must meet ANSI Chapter 7 Communication Elements and Features  
Notes:



Item # 6

Issue: Handrail Extensions

Issue:

Location: (3) stairwells within building

Code: ANSI 505.10.2 Top Extension at Stairs – At the top of a stair flight, handrails shall extend horizontally above the landing for 12 inches minimum beginning directly above the landing nosing. Extensions shall return to a wall, guard, or the landing surface, or shall be continuous to the handrail of an adjacent stair flight.

Code: ANSI 505.10.3 Bottom Extension at Stairs At the bottom of a stair flight, handrails shall extend at the slope of the stair flight for a horizontal distance equal to one tread depth beyond the bottom tread nosing. Extensions shall return to a wall, guard, or the landing surface, or shall be continuous to the handrail of an adjacent stair flight.

Notes:



Item # 7

Issue: Lack of Tactile Characters

Issue:

Location: Interior Elevator Cab

Code: ANSI 407.4.7.1.1 Type – Control buttons shall be identified by tactile characters complying with Section 703.3; 407.4.7.1.1 through 407.4.7.1.3.

Notes:



Item # 8

Issue: Tactile Identification of Emergency Control Buttons

Issue:

Location: Interior Elevator Cab

Code: 407.4.7.1.1 Type – Control buttons shall be identified by tactile characters complying with section 70303.

Code: 407.4.7.1.2 Symbols – The control button for emergency stop, alarm, door open , door close, main entry floor and phone shall be identified with tactile symbols as shown in Table 407.7.1.3Tactile character and Braille designators

Notes: Currently there are no tactile characters on the



Item # 9

Issue: Floor Designation Signage

Issue:

Location: Elevator

Code: ANSI 407.2.3.1 Floor Designation – Floor designations shall be provided in tactile characteristics complying with Section 703.3 located on both side jambs of elevator hoistway entrances. Tactile characters shall be 2 inches minimum in height. A tactile star shall be provided on both jambs at the main entry level.

Code: ANSI 407.2.3.2 Car Designations – Destination-orientated elevators shall provide car identification in tactile characters complying with Section 703.3 located on both sides of the hoist way immediately below the floor designation. Tactile characters shall be 2 inches minimum in height.

Notes:



Item # 10

Issue: Cab Call Buttons – Lack of Braille Characters

Issue:

Location: Interior Elevator Cab

Code: 407.4.7.1.1 Type – Control buttons shall be identified by tactile characters complying with section 70303.

Code: 407.4.7.1.2 Symbols – The control button for emergency stop, alarm, door open , door close, main entry floor and phone shall be identified with tactile symbols as shown in Table 407.7.1.3Tactile character and Braille designators

Notes:



Item # 11

Issue: Door Knobs

Issue:

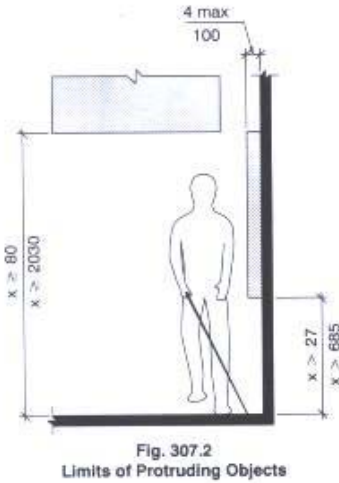
Location: Most Interior Doors in Dolle Building

Code: ANSI 404.2.6 Door Hardware – Handles, pulls, latches, locks and other operable parts on accessible doors shall have a shape that is easy to grasp with one hand and does not require tight grasping, punching, or twisting of the wrist to operate. Operable parts of such hardware shall be 34 inches minimum and 48 inches maximum above the floor.

Notes:



Item # 12  
 Issue: Drinking Fountain Protrusion Limits  
 Issue:  
 Location: All Floors  
 Code: ANSI 307.2 Protrusion Limits. Objects with leading edges more than 27 inches and not more than 80 inches above the floor shall protrude 4 inches maximum horizontally into the circulation path. The drinking fountain shown protrudes significantly into the hallway and the height exceeds the 27 inch minimum.  
 The fountain should be recessed into an alcove or protected by cane detectible barriers.



Notes:



Item # 13  
 Issue: Sink Pipe Covers  
 Issue:  
 Location: Men's Accessible restroom – 1<sup>st</sup> Floor  
 Code: ANSI 606.6 Exposed Pipes and Surfaces – Water supply drainpipes under lavatories and sinks shall be insulated or otherwise configured to protect against contact. There shall be no sharp or abrasive surfaces under lavatories and sinks.

Notes:



Item # 14  
 Issue: Toilet Seat Height (Current 15.75")  
 Issue:  
 Location: Men's Accessible restroom – 1<sup>st</sup> Floor  
 Code: ANSI 604.4 Height – The height of water closet seats shall be 17 inches minimum and 19 inches maximum above the floor, measured to the top of the seat.

Notes:



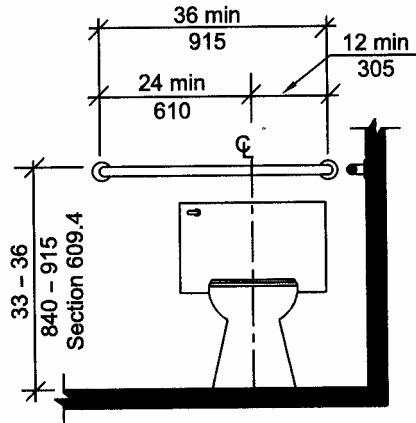
Item # 15  
 Issue: Toilet Seat Cover Dispenser  
 Issue:  
 Location: Men's Accessible restroom – 1<sup>st</sup> Floor  
 Code: Though there is no ANSI code specifically addressing toilet seat cover dispensers, the dispenser should be located adjacent to the toilet paper dispenser and should be no higher than 48" on center from the floor.  
 Notes: The toilet seat cover dispenser in the men's accessible restroom is 60 inches above the floor and installed on the wall behind the toilet. A person in a wheelchair could not



Item # 16  
 Issue: Rear Wall Grab Bar Placement  
 Issue:  
 Location: Men's and Women's Accessible Restrooms – 1<sup>st</sup> Floor  
 Code: ANSI A117.1-2003 Fig. 604.5.2

ICC/ANSI A117.1-2003

CHAPTER 6

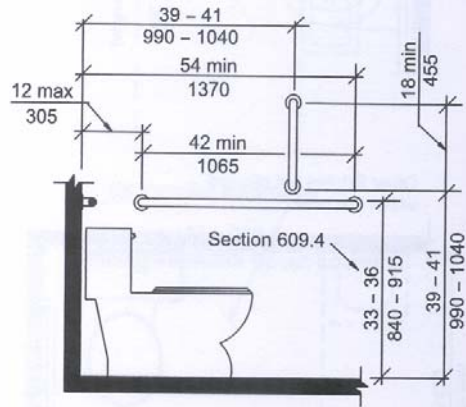


**Fig. 604.5.2  
 Rear Wall Grab Bar for Water Closet**

Notes: The current rear wall grab bar is 24" in length. The bar should be a minimum of 36 inches in length and extend from the centerline of the water closet 12 inches minimum on the side closet to the wall and 24 inches minimum on



Item # 17  
 Issue: Side Wall Grab Bar Length and Placement / Vertical Grab Bars  
 Issue:  
 Location: Men's and Women's Accessible Restrooms – 1<sup>st</sup> Floor  
 Code: ANSI A117.1-2003 Fig. 604.5.1



**Fig. 604.5.1**  
Side Wall Grab Bar for Water Closet

Notes: The current side wall grab bar is 36" in length and should be a minimum of 42 inches. Also, the bar should be installed as indicated in photo below with a vertical grab. Vertical Grab bars needed in men's and women's accessible restrooms





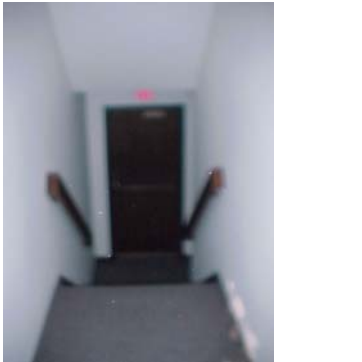
Item # 18  
Issue: Sink Pipe Covers  
Issue:  
Location: Women's Accessible restroom – 1<sup>st</sup> Floor  
Code: ANSI 606.6 Exposed Pipes and Surfaces – Water supply drainpipes under lavatories and sinks shall be insulated or otherwise configured to protect against contact. There shall be no sharp or abrasive surfaces under lavatories and sinks.

Notes:

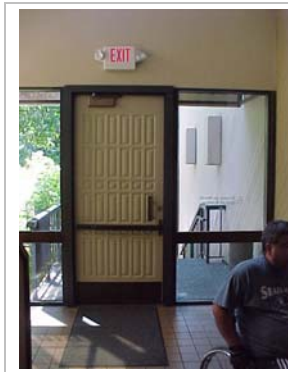


Item # 19  
Issue: Flush Control Location  
Issue:  
Location: 1<sup>st</sup> Floor Women's Accessible Restroom  
Code: ANSI 604.6 Flush Controls - Hand operated flush controls shall be located on the open side of the water closet.

Notes:

	<p>Item # 20</p> <p>Issue: Toilet Seat Height (Current 15")</p> <p>Issue:</p> <p>Location: Women's Accessible restroom – 1<sup>st</sup> Floor</p> <p>Code: ANSI 604.4 Height – The height of water closet seats shall be 17 inches minimum and 19 inches maximum above the floor, measured to the top of the seat.</p> <p>Notes:</p>
	<p>Item # 21</p> <p>Issue: Toilet Seat Cover Dispenser</p> <p>Issue:</p> <p>Location: Women's Accessible restroom – 1<sup>st</sup> Floor</p> <p>Code: Though there is no ANSI code specifically addressing toilet seat cover dispensers, the dispenser should be located adjacent to the toilet paper dispenser and should be no higher than 48" on center from the floor.</p> <p>Notes: The toilet seat cover dispenser in the women's accessible restroom is 57 inches above the floor and installed on the wall side wall of the toilet. A person in a wheelchair could not access the dispenser in its current location.</p>
	<p>Item # 22</p> <p>Issue: Directional Signage</p> <p>Issue:</p> <p>Location: Inaccessible Emergency Exit – West end of building - 1<sup>st</sup> Floor South Center Lobby Exit</p> <p>Code: IBC 1110.2 Directional Signage – Directional signage indicating the route to the nearest like accessible element shall be provided. These directional signs shall include the International Symbol of Accessibility at exits and elevators serving a required accessible space, but not providing an approved accessible means of egress; signage shall be provided in accordance with IBC Section 1007.7.</p> <p>Notes: Points of emergency egress include: Ground floor East end of building</p>





Item # 23  
Issue: Directional Signage  
Issue:  
Location: Inaccessible Emergency Exit – South Center exit - 1st Floor  
Code: IBC 1110.2 Directional Signage – Directional signage indicating the route to the nearest like accessible element shall be provided. These directional signs shall include the International Symbol of Accessibility at exits and elevators serving a required accessible space, but not providing an approved accessible means of egress; signage shall be provided in accordance with IBC Section 1007.7. inaccessible public toilets and bathing facilities.  
Notes:






Item # 24  
Issue: Directional Signage  
Issue:  
Location: Inaccessible restrooms on all Floors  
Code: IBC 1110.2 Directional Signage – Directional signage indicating the route to the nearest like accessible element shall be provided at inaccessible public toilets and bathing facilities.  
Notes:



Item # 25  
Issue: Emergency Signage -  
Issue:  
Location: Elevators  
Code: ANSI 703.3.10 Height Above Floor – Tactile characters shall be 48 inches minimum above the floor, measured to the baseline of the lowest tactile character and 60 inches maximum above the floor, measured to the baseline of the highest tactile character.  
Notes: Tactile sign should be provided



Item # 26  
Issue: Information Signage  
Issue:  
Location: Ground Floor – Superior Court Clerk Office  
Code: Code: ANSI 703.3.11 Location – Where tactile sign is provided at a door, the sign shall be alongside the door at the latch side.  
Note: Tactile sign should be provided  
Code: ANSI 703.3.10 Height Above Floor – Tactile characters shall be 48 inches minimum above the floor,

	<p>measured to the baseline of the lowest tactile character and 60 inches maximum above the floor, measured to the baseline of the highest tactile character.</p> <p>Note: It is also recommended that a push button buzzer be installed as opposed to having citizens knock on the door.</p> <p>Notes:</p>
	<p>Item # 27</p> <p>Issue: Service Counter Height – Current height – 38 Inches</p> <p>Issue:</p> <p>Location: Ground Floor – Superior Court Clerk</p> <p>Code: ANSI 904.3.2 Forward Approach – A portion of the counter service 30 inches minimum in length and 36 inches maximum is height above the floor shall be provided.</p> <p>Notes:</p>
	<p>Item # 28</p> <p>Issue: Sign Location</p> <p>Issue:</p> <p>Location: Board of Equalization – Ground Floor</p> <p>Code: ANSI 703.3.11 Location – Where tactile sign is provided at a door, the sign shall be alongside the door at the latch side.</p> <p>Code: ANSI 703.3.10 Height Above Floor – Tactile characters shall be 48 inches minimum above the floor, measured to the baseline of the lowest tactile character and 60 inches maximum above the floor, measured to the baseline of the highest tactile character.</p> <p>Note: Tactile sign should be provided</p> <p>Code: ANSI 703.3.10 Height Above Floor – Tactile characters shall be 48 inches minimum above the floor, measured to the baseline of the lowest tactile character and 60 inches maximum above the floor, measured to the baseline of the highest tactile character.</p>
	<p>Item # 29</p> <p>Issue: Area of Refuge Designation</p> <p>Issue:</p> <p>Location: Ground Floor East Exit</p> <p>Code:</p> <p>Notes: It is recommended by the Citizen ADA Committee that the East exit on the ground floor be designated as an area of refuge. – Reviewed by Building code inspector Dave Maret</p>