




# ADA Compliance Program

## Clark County Facilities Transition Plan Clark County Elections and Auto License Building

1408 Franklin Street

Date of Survey: May 15, 2006

Conducted by: Teresa Guise Wayne Yarnall Jesse Magana Tim McVicker

<p>No Photo</p>	<p>Item # 1</p> <p>Issue: Excessive Foot pounds of Pressure</p> <p>Issue:</p> <p>Location: Men's Bathroom Door – 1<sup>st</sup> Floor near Entrance to Elections Office</p> <p>Code: ANSI: 404.2.8 Door-Opening Force The force for pushing or pulling open doors other than fire doors shall be as follows:</p> <ul style="list-style-type: none"> <li>• Interior hinged door: 5:0 pounds maximum</li> <li>• Sliding or folding door: 5:0 pounds maximum</li> <li>• Recommendation: Adjust door opening pressure</li> </ul> <p>Notes:</p>
<p>No Photo</p>	<p>Item # 2</p> <p>Issue: Height of Ticket Waiting Dispenser</p> <p>Issue:</p> <p>Location: Auto License Customer Lobby</p> <p>Code: ANSI: 3087.3 Side Reach ANSI 308.3.1 Unobstructed – Where a clear floor space allows a parallel approach to an element and the side reach is unobstructed, the high side reach shall be 48 inches maximum and the low side reach shall be 15 inches minimum above the floor.</p> <p>Notes: Ticket Dispenser is 51.5 high at the ticket distribution point. The height cannot exceed 48 inches.</p>
	<p>Item # 3</p> <p>Issue: Detectable Warnings</p> <p>Issue:</p> <p>Location: SE Sidewalk at Driveway to PSC Parking Garage</p> <p>Code: IBC- Section 1102 Definitions – Detectable Warnings – A standardized surface feature built in or applied to walking surfaces or other elements to warn visually impaired persons of hazards on a circulation path. ANSI Code: 705.2 Standardization – Detectable warning surfaces shall be standard within a building, facility, site</p>



or complex of buildings  
ANSI 705.5 Truncated Domes – Detectable warning surfaces shall have truncated domes complying with Section 705.5

ANSI 705.5 Truncated Domes – Detectable warning surfaces shall have truncated domes complying with Section 705.5

Sides of ramp to crosswalk also should be flared.

Notes:



Item # 4

Issue: Vertical Grab Bar

Issue:

Location: 1<sup>st</sup> Floor Men's Restroom Accessible Stall

Code: ANSI A117.1-2003 Fig. 604.5.1

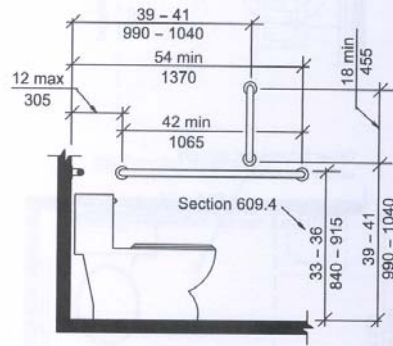


Fig. 604.5.1  
Side Wall Grab Bar for Water Closet



Item # 5

Issue: Toilet Paper Dispenser Location

Issue:

Location: 1<sup>st</sup> Floor Men's Restroom Accessible Stall

Code: ANSI 604.7 Dispensers. Toilet paper dispensers shall comply with Section 309.4 and shall be 7 inches (180 mm) minimum and 9 inches (230 mm) maximum in front of the water closet measured to the centerline of the dispenser. The outlet of the dispenser shall be 15 inches (380 mm) minimum and 48 inches (1220 mm) maximum above the floor, and shall not be located behind the grab bars. Dispensers shall not be of a type that control delivery, or do not allow continuous paper flow.

Notes:



Item # 6  
 Issue: Vertical Grab Bar  
 Issue:  
 Location: 1<sup>st</sup> Floor Women's Restroom Accessible Stall  
 Code: ANSI A117.1-2003 Fig. 604.5.1

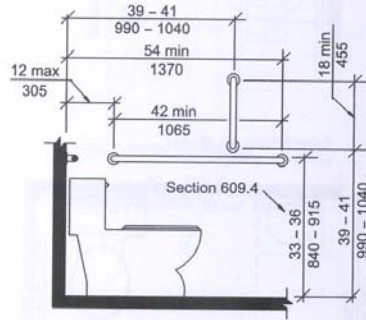


Fig. 604.5.1  
 Side Wall Grab Bar for Water Closet

Notes:



Item # 7  
 Issue: Vertical Grab Bar  
 Issue:  
 Location: Ground Floor Uni-sex Restroom  
 Code: ANSI A117.1-2003 Fig. 604.5.1

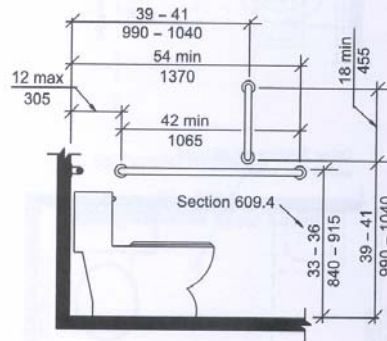
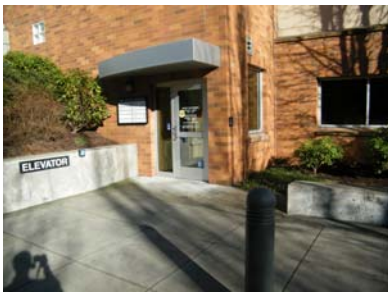


Fig. 604.5.1  
 Side Wall Grab Bar for Water Closet

Notes:



Item # 8  
Issue: Toilet Paper Dispenser Location  
Issue:  
Location: Ground Floor Uni-sex Restroom  
Code: ANSI 604.7 Dispensers. Toilet paper dispensers shall comply with Section 309.4 and shall be 7 inches (180 mm) minimum and 9 inches (230 mm) maximum in front of the water closet measured to the centerline of the dispenser. The outlet of the dispenser shall be 15 inches (380 mm) minimum and 48 inches (1220 mm) maximum above the floor, and shall not be located behind the grab bars. Dispensers shall not be of a type that control delivery, or do not allow continuous paper flow.  
Notes:



Item # 9  
Issue: Landing  
Issue:  
Location: SW Lower Level – Exterior Door (Elevator Entrance)  
Code: Section 303.4 of ANSI A117.1 for ramped when exceeding 1/2-inch in height.  
Notes: The door in question does not meet code for life safety or ADA due to fact that there is not a landing outside this door. A ramp was placed directly outside of exit door. Current slope is 4.3 degrees or 7.5%  
  
To correct this issue a landing as wide as the door opening and not less than 60-inches in length would need to be installed. The landing would also require a 1:12 ramp from the landing to accessible route level (sidewalk). When a ramp is installed edge protection would also be required to comply with Section 1010.9 of the IBC.