





Americans with Disabilities Office General Services Department



Accessibility Survey

Date: December 6, 2010
Location: Val Ogden House
 10201 Fourth Plain Blvd
 Vancouver, WA
Occupant: Community Voices are Borne (CVAB)
Survey Team:

- | | | |
|--|--|--|
| <input type="checkbox"/> Wayne Yarnall | <input type="checkbox"/> Jesse Magana | <input type="checkbox"/> Bud Van Cleve |
| <input type="checkbox"/> Brenda Tiefenthaler | <input checked="" type="checkbox"/> Dave Maret | <input checked="" type="checkbox"/> Tim McVicker |

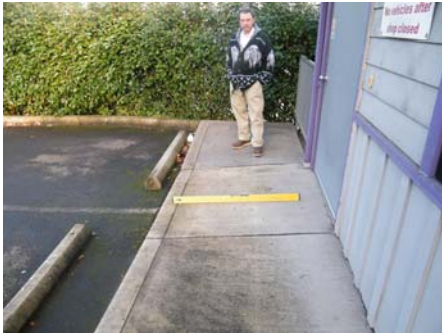
Observations:

Photo Orientation	Item - Issue – Location - Code - Notes
	<p>Item # 1</p> <p>Issue: Orientation Photo</p> <p>Issue:</p> <p>Location: Val Ogden Center 10201 Fourth Plain Blvd</p> <p>Code:</p> <p>Notes: NA</p>
	<p>Item # 2</p> <p>Issue: Ramp Protruding into Parking Access Aisle</p> <p>Issue: Detectible Warnings</p> <p>Issue: Location of Access Aisle</p> <p>Location: North Side of Building – Main Entrance</p> <p>Code: ANSI 406 Curb Ramps</p> <p>ANSI 406.1 Curb Ramps on accessible routes shall comply with Sections 406, 405.2 and 405.10</p> <p>ANSI 406.6 Location - Curb ramps and the flared sides of curb ramps shall be located so they do not project into vehicular traffic lanes, parking spaces, or parking access aisles. Curb ramps at marked crossings shall be wholly contained within the markings, excluding any flared sides.</p> <p>ANSI 406. 13 Detectible Warnings at Curb Ramps</p>

	<p>Where detectable warnings are provided on curb ramps, they shall comply with Sections 406.13 and 705.</p> <p>ANSI 406.13.1 Area Covered. Detectable warnings shall be 24 inches (610 mm) minimum in the direction of travel and extend the full width of the curb ramp or flush surface.</p> <p>ANSI 406.13.2 Location. The detectable warning shall be located so the edge nearest the curb line is 6 inches (150 mm) to 8 inches (205 mm) from the curb line.</p> <p>Notes: Construction of a curb cut in the present area would not provide the required landing space for the main entrance</p> <p>The accessible parking stall and access aisle should be constructed one stall further to the East where a curb cut for the accessible aisle can be constructed without interfering with the landing for the main entrance of the building.</p>
	<p>Item # 3</p> <p>Issue: Excessive Ramp Slope into Parking Access Aisle.</p> <p>Issue:</p> <p>Location: Ramp into access aisle at main entrance of building</p> <p>Code: ANSI 405.2 Slope - Ramp runs shall have a running slope not steeper than 1:12. Exception: In existing buildings or facilities, ramps shall be permitted to have slopes steeper than 1:12 complying with Table 405.2 where such slopes are necessary due to space limitations.</p> <p>Notes: Note: Current slope is 9.0%. Ramp slope cannot exceed 8.3%.</p> <p>Current ramp must be removed and a curb cut installed. See Item # 2 above.</p>
	<p>Item # 4</p> <p>Issue: Signage to Accessible Entrance</p> <p>Issue: Egress from Exit</p> <p>Issue: Detectible Warnings</p> <p>Issue: Landings at Door – Floor Elevation</p> <p>Location: NE Corner of Building</p> <p>Code: ANSI 1110.2 - Directional Signage</p> <p>Directional signage indicating the route to the nearest like accessible element shall be provided. These directional signs shall include the</p>



Interior Photo of Door



International Symbol of Accessibility

Sign Sample: Signs must meet ANSI Chapter 7 Communication Elements and Features

Recommendation - Erect sign at Northeast emergency exit giving directions to accessible entrance on North side of building.

Code: IBC 1003 – Means of Egress – Continuity - The path of egress travel along a means of egress shall not be interrupted by any building element other than a means of egress element as specified in this chapter.

Code: IBC Section 1102 – Detectible Warnings – A standardized surface feature built in or applied to walking surface or other element to warn visually impaired persons of hazards on a circulation path

Code: IBC 1008.1.4 Floor Elevation – There shall be a floor or landing on each side of a door. Such floor or landing shall be at the same elevation on each side of the door. Landings shall be level except for exterior landings which are permitted to have slope not to exceed 0.25 unit vertical in 12 units horizontal (2% slope)

Notes: The NE exit from the building serves as an emergency exit.

The wheel stops located immediately adjacent to the landing create a barrier for mobility devices such as wheelchairs to escape the area in the event of an emergency evacuation from the building.

Detectible warnings are needed anywhere a pathway enters a hazardous zone such as a parking lot.

The exterior landing does not meet slope requirements. Current slope is 10%. This area cannot exceed a 2% slope.



Item # 5

Issue: Exterior Signage – Protrusion Limits

Issue:

Location: North Side of Building Adjacent to Walkway

Code: ANSI 307.2 Protrusion Limits. Objects with leading edges more than 27 inches and not more than 80 inches above the floor shall protrude 4 inches maximum horizontally into the circulation path.

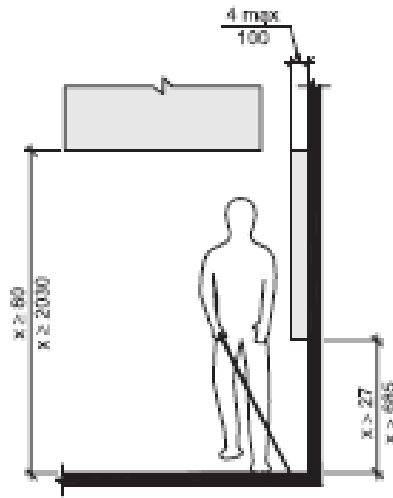


Fig. 307.2
Limits of Protruding Objects

Notes: The above noted display board protrudes 8.25" into the pathway. The bottom edge of the sign is 46.75" high. Items that protrude into accessible pathways are a hazard to the visually impaired and blind.



Item # 6
 Issue: Handrails
 Issue:
 Location: NW Corner of Building
 Code: ANSI 505 Handrails
 ANSI 505.1 General - Handrails required by Section 405.8 for ramps, or Section 504.6 for Stairs, shall comply with Section 505.
 ANSI 505.2 Location - Handrails shall be provided on both sides of stairs and ramps.
 Notes: Handrails are required on both sides of stairs. A portion of the handrails on the south side of the stairway were not installed.



Item # 7
 Issue: Accessible Parking
 Issue:
 Location: South Side of Building
 Code: IBC 1106.1 Where parking is provided; accessible parking spaces shall be provided in compliance with Table 1106.1' except as required by Sections 1106.2 through 1106.4. Where more than one parking facility is provided on a site, the number of parking spaces required to be accessible shall be calculated separately for each parking facility.

	<p>Notes: At minimum, one van accessible parking stall and access aisle is required on the South side of the building.</p>
	<p>Item # 8</p> <p>Issue: Excessive Ramp Slope from Parking Area to Pathway</p> <p>Issue: Detectible Warning Required where Circulation Path Enters Parking Lot</p> <p>Location: South side of building</p> <p>Code: ANSI 405.2 Slope - Ramp runs shall have a running sloe not steeper than 1:12. Exception: In existing buildings or facilities, ramps shall be permitted to have slopes steeper than 1:12 complying with Table 405.2 where such slopes are necessary due to space limitations.</p> <p>Code: IBC Section 1102 – Detectible Warnings – A standardized surface feature built in or applied to walking surface or other element to warn visually impaired persons of hazards on a circulation path</p> <p>Notes: Current slope is 17.6%. Slope cannot exceed 8.3%.</p>
	<p>Item # 9</p> <p>Issue: Smoking Area Setbacks</p> <p>Issue: Accessibility to Smoking Area</p> <p>Location: Smoking Area – South Side of Building</p> <p>Code: IBC 1104.2 Within a site. At least one accessible route shall connect accessible buildings, accessible facilities, accessible elements and accessible spaces that are on the same site.</p> <p>Notes: Smoking areas must be a minimum of 25' from any building entrance, window or ventilation system</p>
	<p>Item # 10</p> <p>Issue: Accessibility to Storage Building</p> <p>Issue: Storage Building Door Handle –Operable Parts</p> <p>Location: South Side of Facility</p> <p>Code: IBC 1104.2 Within a site. At least one accessible route shall connect accessible buildings, accessible facilities, accessible elements and accessible spaces that are on the same site.</p> <p>ANSI 309.4 Operation - Operable parts shall be operable with one hand and shall not require tight grasping, pinching, or twisting of the wrist. The</p>



force required to activate operable parts shall be 5.0 pounds (22.2 N) maximum.

Notes: The storage building is inaccessible to individuals with disabilities. A ramp and handrails are required.



Item # 11
 Issue: Handrails
 Issue: Directional Signage to Accessible Entrance
 Location: Staircase on SE corner of building
 Code: ANSI 505 Handrails

505.1 General. Handrails required by Section 405.8 for ramps, or Section 504.6 for stairs, shall comply with Section 505.

505.2 Location. Handrails shall be provided on both sides of stairs and ramps.

EXCEPTION: Aisle stairs and aisle ramps provided with a handrail either at the side or within the aisle width.

505.3 Continuity. Handrails shall be continuous within the full length of each stair flight or ramp run. Inside handrails on switchback or dogleg stairs or ramps shall be continuous between flights or runs. Other handrails shall comply with Sections 505.10 and 307.



EXCEPTION: Handrails in aisles serving seating.



505.4 Height. Top of gripping surfaces of handrails shall be 34 inches (865 mm) minimum and 38 inches (965 mm) maximum vertically above stair nosings, ramp surfaces and walking surfaces. Handrails shall be at a consistent height above stair nosings, ramp surfaces and walking surfaces.

505.5 Clearance. Clearance between handrail gripping surface and adjacent surfaces shall be 1 1/2 inches (38 mm) minimum.

505.6 Gripping Surface. Gripping surfaces shall be continuous, without interruption by newel posts, other construction elements, or obstructions.

Code: ANSI 1110.2 - Directional Signage
 Directional signage indicating the route to the nearest like accessible element shall be provided. These directional signs shall include the

	<p>International Symbol of Accessibility</p> <p>Sign Sample: Signs must meet ANSI Chapter 7 Communication Elements and Features</p> <p>Notes: Recommendation - Erect sign at base of staircase providing directions to nearest accessible entrance on South side of building.</p> <p>The guardrail on the SE corner of building meets code for guardrail height. However, there are no "handrails" on this staircase.</p>
	<p>Item # 12</p> <p>Issue: Door Hardware – Operable Parts</p> <p>Issue:</p> <p>Location: Exterior Door – SE Corner of Building</p> <p>Code: ANSI Operable Parts</p> <p>ANSI 309.4 Operation - Operable parts shall be operable with one hand and shall not require tight grasping, pinching, or twisting of the wrist. The force required to activate operable parts shall be 5.0 pounds (22.2 N) maximum.</p> <p>ANSI 404.2.6 Door Hardware - Handles, pulls, latches, locks, and other operable parts on accessible doors shall have a shape that is easy to grasp with one hand and does not require tight grasping, pinching, or twisting of the wrist to operate. Operable parts of such hardware shall be 34 inches (865 mm) minimum and 48 inches (1220 mm) maximum above the floor.</p> <p>Notes: Acquire accessible handles</p>
	<p>Item # 13</p> <p>Issue: Door Handle – Operable Parts</p> <p>Issue:</p> <p>Location: SW Entrance – Lower Level (Thrift Store)</p> <p>Code: ANSI Operable Parts</p> <p>ANSI 309.4 Operation - Operable parts shall be operable with one hand and shall not require tight grasping, pinching, or twisting of the wrist. The force required to activate operable parts shall be 5.0 pounds (22.2 N) maximum.</p> <p>ANSI 404.2.6 Door Hardware - Handles, pulls, latches, locks, and other operable parts on accessible doors shall have a shape that is easy to grasp with one hand and does not require tight grasping, pinching, or twisting of the wrist to</p>

	<p>operate. Operable parts of such hardware shall be 34 inches (865 mm) minimum and 48 inches (1220 mm) maximum above the floor.</p> <p>Notes: Acquire accessible handles</p>
	<p>Item # 14</p> <p>Issue: Handrails</p> <p>Issue: Accessible Route (Ramp) – No Ramp Access to Proposed Thrift Shop Entrance</p> <p>Issue: Detectible Warnings</p> <p>Issue: Pole Obstructs Path</p> <p>Location: Stairs on Pathway – South Side of Building</p> <p>Code: ANSI 505 Handrails</p> <p>505.1 General. Handrails required by Section 405.8 for ramps, or Section 504.6 for stairs, shall comply with Section 505.</p> <p>505.2 Location. Handrails shall be provided on both sides of stairs and ramps.</p> <p>Code: IBC 1104.2 Within a site. At least one accessible route shall connect accessible buildings, accessible facilities, accessible elements and accessible spaces that are on the same site.</p> <p>Code: IBC Section 1102 – Detectible Warnings – A standardized surface feature built in or applied to walking surface or other element to warn visually impaired persons of hazards on a circulation path</p> <p>Code: IBC 1101/.2.2 Clear Width of Accessible Route – Clear width of accessible route shall comply with ICC A117.1 Table 403.4. For exterior routes of travel, the minimum clear width shall be 44 inches.</p> <p>Notes: Handrails required on both sides of stairs and ramps.</p> <p>If there is a circulation path from the thrift store entrance to the parking lot detectible warnings must be applied where the path intersects with the parking area.</p>
	<p>Item # 15</p> <p>Issue: Mantle – Protrusion Limits</p> <p>Issue:</p> <p>Location: Ground Floor - Proposed Thrift Shop</p> <p>Code: ANSI 307.2 Protrusion Limits. Objects with leading edges more than 27 inches and not more than 80 inches above the floor shall protrude 4 inches maximum horizontally into the circulation path.</p>



Notes: The mantle over the fireplace should be removed. It protrudes 8" into the circulation path and the lowest edge of the mantle is 54" high.

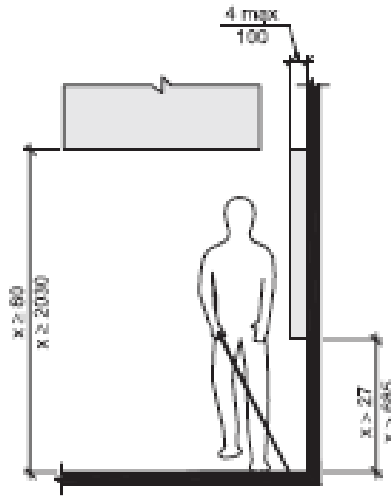
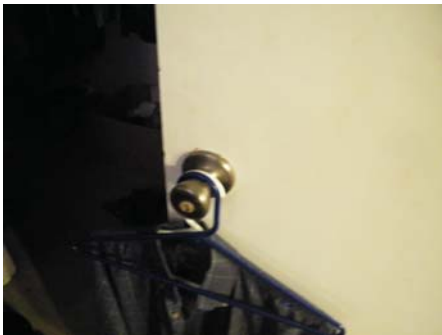



Fig. 307.2
Limits of Protruding Objects





Item # 16
 Issue: Door Width
 Issue:
 Location: Several of the Doors on Lower Level
 Code: 404.2.2 Clear Width. Doorways shall have a clear opening width of 32 inches (815 mm) minimum.
 Notes: Door widths measured were 31" stop to stop.



Item # 17
 Issue: Door Handles
 Issue:
 Location: Throughout Building
 Code: ANSI Operable Parts
 ANSI 309.4 Operation - Operable parts shall be operable with one hand and shall not require tight grasping, pinching, or twisting of the wrist. The force required to activate operable parts shall be 5.0 pounds (22.2 N) maximum.
 ANSI 404.2.6 Door Hardware - Handles, pulls, latches, locks, and other operable parts on accessible doors shall have a shape that is easy to grasp with one hand and does not require tight grasping, pinching, or twisting of the wrist to operate. Operable parts of such hardware shall be 34 inches (865 mm) minimum and 48 inches

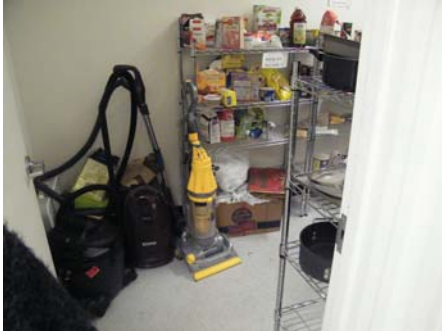
	<p>(1220 mm) maximum above the floor.</p> <p>Notes: All door handles should be replaced that do not meet the requirements on ANSI 404.2.6 – Door Hardware.</p>
	<p>Item # 18</p> <p>Issue: Bathroom Accessibility</p> <p>Issue:</p> <p>Location: Lower Level</p> <p>Code: IBC 1109.2 – Toilet and bathing rooms shall be accessible. Where a floor level is not required to be connected by an accessible route, the only toilet rooms or bathing facilities provided within the facility shall not be located on the inaccessible floor. At least one of each type of fixture, element, control or dispenser in each accessible toilet room and bathing facility, shall be accessible.</p> <p>Notes: The restroom on the ground floor is completely inaccessible.</p>
  	<p>Item # 19</p> <p>Issue: Kitchen Accessibility</p> <p>Issue: Clear Floor Space</p> <p>Location: Kitchen/Dining Area – Lower Level</p> <p>Code: ANSI 902.3 Height. The tops of dining surfaces and work surfaces shall be 28 inches (710 mm) minimum and 34 inches (865 mm) maximum in height above the floor.</p> <p>Code: ANSI 606.3 Height – The front of lavatories and sinks shall be 34 inches maximum above the floor, measured to the higher of the rim or counter surface.</p> <p>Notes: Sink height is 37"</p>

	<p>Item # 20</p> <p>Issue: Door Pressure</p> <p>Issue:</p> <p>Location: Main Door – North Side</p> <p>Code: ANSI404.2.8 Door–Opening Force. Fire doors shall have the minimum opening force allowable by the appropriate administrative authority. The force for pushing or pulling open doors other than fire doors shall be as follows:</p> <ol style="list-style-type: none"> 1. Interior hinged door: 5.0 pounds (22.2 N) maximum 2. Sliding or folding door: 5.0 pounds (22.2 N) maximum <p>These forces do not apply to the force required to retract latch bolts or disengage other devices that hold the door in a closed position.</p> <p>Notes: The doors bind. West door pressure is 8 ft. lbs. the East door pressure is 15 ft. lb</p>
	<p>Item # 21</p> <p>Issue: Counter Height</p> <p>Issue:</p> <p>Location: Reception Desk – Main Entrance</p> <p>Code: ANSI 904.3.1 Parallel Approach. A portion of the counter surface 36 inches (915 mm) minimum in length and 36 inches (915 mm) maximum in height above the floor shall be provided. Where the counter surface is less than 36 inches (915 mm) in length, the entire counter surface shall be 36 inches (915 mm) maximum in height above the floor. A clear floor space complying with Section 305, positioned for a parallel approach adjacent to the accessible counter, shall be provided.</p> <p>ANSI 904.3.2 Forward Approach. A portion of the counter surface 30 inches (760 mm) minimum in length and 36 inches (915 mm) maximum in height above the floor shall be provided. A clear floor space complying with Section 305, positioned for a forward approach to the accessible counter, shall be provided. Knee and toe clearance complying with Section 306 shall be provided</p>

under the accessible counter.

904.4 Checkout Aisles. Checkout aisles

Notes: Front Counter Height is currently 42"



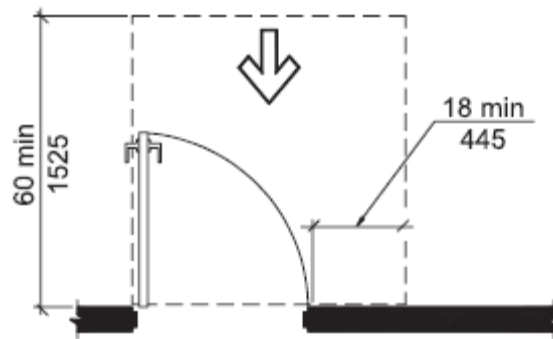
Item # 22

Issue: Turning Radius at Entrance to Storage Room

Issue:

Location: Kitchen – Main Level

Code: **404.2.3 Maneuvering Clearances at Doors.** Minimum maneuvering clearances at doors shall comply with Section 404.2.3 and shall include the full clear opening width of the doorway.



(a) Front Approach, Pull Side



Notes:

Item # 23

Issue: Sink Height – Work

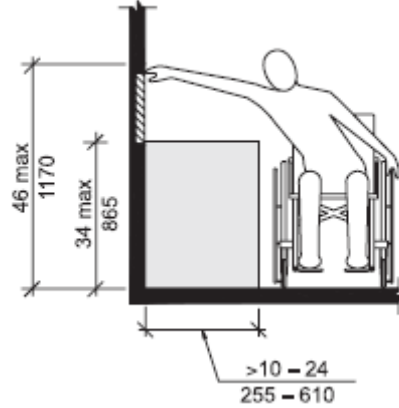
Issue: Reach Range

Location: Kitchen – Main Floor

Code: ANSI 606.3 Height. The front of lavatories and sinks shall be 34 inches (865 mm) maximum above the floor, measured to the higher of the rim or counter surface.

Code: ANSI 308.3.2 Obstructed High Side Reach





Notes: Counter Top 38 .75" – Reach is 22.75" – Counter top cannot exceed 34 inches maximum

No Photo

Item # 24
 Issue: Restroom Accessible Signage
 Issue:
 Location: Men’s and Women’s Restrooms
 Code: WAC 1101.2.9 (ICC A117.1 Section 703.6.3.1) International symbol of accessibility. Where the International Symbol of Accessibility is required, it shall be proportioned complying with ICC A117.1 Figure 703.6.3.1. All interior and exterior signs depicting the International Symbol of Accessibility shall be white on a blue background.
 Notes: Current signage color does not meet code requirements



Item # 25
 Issue: Vertical Grab Bar
 Issue:
 Location: Men’s Restroom
 Code: ANSI 604.5.1 – Vertical Grab Bar

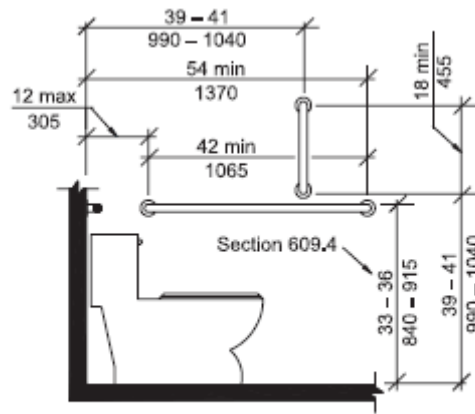


Fig. 604.5.1
Side Wall Grab Bar for Water Closet

Notes:



Item # 26

Issue: Cover Exposed Pipes and Surfaces

Issue:

Location: Men's Restroom

Code: ANSI 606.6 - Exposed Pipes and Surfaces – Water supply and drainpipes under lavatories and sinks shall be insulated or otherwise configured to protect against contact. There shall be no sharp or abrasive surfaces under lavatories and sinks.

Notes: Cover drains and water intake pipes/hoses



Item # 27

Issue: Overlap

Issue:

Location: Men's Restrooms

Code: 604.3.2 Overlap. The required clearance around the water closet shall be permitted to overlap the water closet, associated grab bars, paper dispensers, sanitary napkin receptacles, coat hooks, shelves, accessible routes, clear floor space at other fixtures and the turning space. No other fixtures or obstructions shall be within the required water closet clearance.

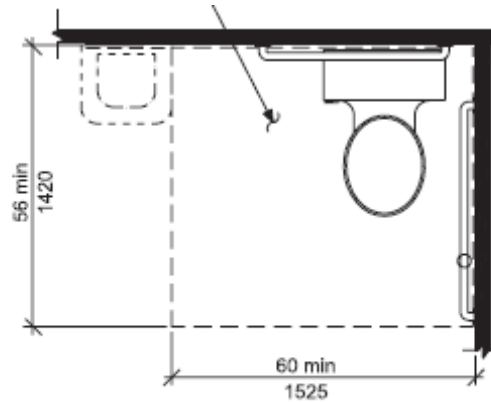


Fig. 604.3
Size of Clearance for Water Closet

Notes: Current distance is 42". Minimum distance by code is 60 inches. This opening is necessary to maneuver a wheelchair next to the toilet for transfer.



Item # 28
 Issue: Paper Towel height
 Issue:
 Location: Men's Restroom
 Code: ANSI 308.2 Forward Reach
 ANSI 308.2.1 Unobstructed - Where a forward reach is unobstructed, the high forward reach shall be 48 inches (1220 mm) maximum and the low forward reach shall be 15 inches minimum above the floor.

Notes: Current Height is 65"



Item # 29
 Issue: Mirror Height
 Issue:
 Location: Men's Restroom
 Code: ANSI 1003.11.6 Mirrors - Mirrors above lavatories shall have the bottom edge of the reflecting surface 40 inches (1015 mm) maximum above the floor.

Notes: Current mirror height is 42"



Item # 30
 Issue: Maneuvering Clearances at Manual Swinging Doors
 Issue:
 Location: Men's Restroom
 Code:

Fig. 404.2.2
 Clear Width of Doorways

Table 404.2.3.1—Maneuvering Clearances at Manual Swinging Doors

TYPE OF USE		MINIMUM MANEUVERING CLEARANCES	
Approach Direction	Door Side	Perpendicular to Doorway	Parallel to Doorway (beyond latch unless noted)
From front	Pull	60 inches (1525 mm)	18 inches (455 mm)
From front	Push	48 inches (1220 mm)	0 inches (0 mm) ³
From hinge side	Pull	60 inches (1525 mm)	36 inches (915 mm)
From hinge side	Pull	54 inches (1370 mm)	42 inches (1065 mm)
From hinge side	Push	42 inches (1065 mm) ¹	22 inches (560 mm) ^{3,4}
From latch side	Pull	48 inches (1220 mm) ²	24 inches (610 mm)
From latch side	Push	42 inches (1065 mm) ²	24 inches (610 mm)

¹Add 6 inches (150 mm) if closer and latch provided.
²Add 6 inches (150 mm) if closer provided.

³Add 12 inches (305 mm) beyond latch if closer and latch provided.
⁴Beyond hinge side.

Notes: Lockers obstruct clearance requirements



Item # 31
 Issue: Flush Controls – Closed Side
 Issue: Round Toilet Seat
 Location: Women's Restroom
 Code: ANSI 604.10.6 - Flush Controls - Flush controls shall be hand operated or automatic. Hand operated flush controls shall comply with Sections 309.2 and 309.4 and shall be installed 36 inches maximum above the floor. Flush controls shall be located on the open side of the water closet.
 Code: Plumbing Code 408.1 – Water Closet bowls for public use shall be elongated type.

Notes: Acquire toilet tank with flush controls on open side



Item # 32
 Issue: Vertical Grab Bars
 Issue:
 Location: Women's Restroom
 Code: ANSI 604.5.1 – Vertical Grab Bar

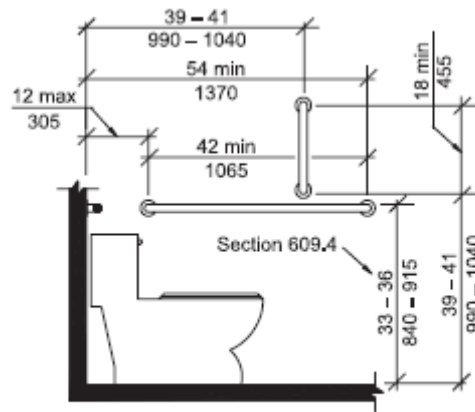


Fig. 604.5.1
Side Wall Grab Bar for Water Closet

Notes:



Item # 33

Issue: Toilet Seat Height

Issue:

Location: Women's Restroom

Code: 604.4 Height. The height of water closet seats shall be 17 inches (430 mm) minimum and 19 inches (485 mm) maximum above the floor, measured to the top of the seat. Seats shall not be sprung to return to a lifted position.

Notes: Current Height is 16"



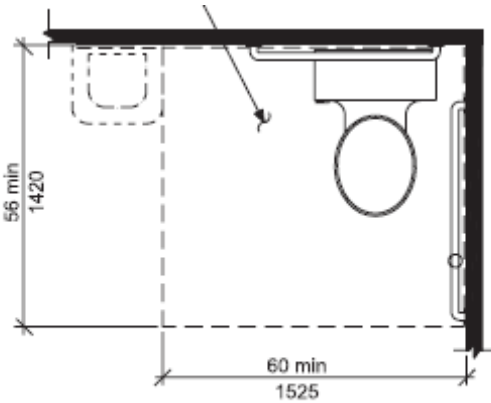


Item # 34

Issue: Overlap

Issue:

Location: Women's Restrooms

Code: 604.3.2 Overlap. The required clearance around the water closet shall be permitted to overlap the water closet, associated grab bars, paper dispensers, sanitary napkin receptacles, coat hooks, shelves, accessible routes, clear floor space at other fixtures and the turning space. No other fixtures or obstructions shall be within the required water closet clearance.

	 <p style="text-align: center;">Fig. 604.3 Size of Clearance for Water Closet</p> <p>Notes: Current distance is 42". Minimum distance by code is 60 inches. This opening is necessary to maneuver a wheelchair next to the toilet for transfer.</p>
	<p>Item # 35</p> <p>Issue: Exposed Pipes</p> <p>Issue:</p> <p>Location: Women's Restroom</p> <p>Code: ANSI 606.6 - Exposed Pipes and Surfaces – Water supply and drainpipes under lavatories and sinks shall be insulated or otherwise configured to protect against contact. There shall be no sharp or abrasive surfaces under lavatories and sinks.</p> <p>Notes: Cover drain and intake pipes/hoses</p>
	<p>Item # 36</p> <p>Issue: Mirror Height</p> <p>Issue:</p> <p>Location: Women's Restroom</p> <p>Code: ANSI 1003.11.6 Mirrors - Mirrors above lavatories shall have the bottom edge of the reflecting surface 40 inches (1015 mm) maximum above the floor.</p> <p>Notes: Current mirror height is 41.25"</p>



Item # 37
 Issue: Paper Towel Height
 Issue:
 Location: Women's Restroom
 Code: ANSI 308.2 Forward Reach

ANSI 308.2.1 Unobstructed - Where a forward reach is unobstructed, the high forward reach shall be 48 inches (1220 mm) maximum and the low forward reach shall be 15 inches minimum above the floor.

Notes: Current height is 66"



Item # 38
 Issue: Maneuvering Clearances at Manual Swinging Doors
 Issue:
 Location: Women's Restroom
 Code:

Fig. 404.2.2
 Clear Width of Doorways

Table 404.2.3.1—Maneuvering Clearances at Manual Swinging Doors

TYPE OF USE		MINIMUM MANEUVERING CLEARANCES	
Approach Direction	Door Side	Perpendicular to Doorway	Parallel to Doorway (beyond latch unless noted)
From front	Pull	60 inches (1525 mm)	18 inches (455 mm)
From front	Push	48 inches (1220 mm)	0 inches (0 mm) ³
From hinge side	Pull	60 inches (1525 mm)	36 inches (915 mm)
From hinge side	Pull	54 inches (1370 mm)	42 inches (1065 mm)
From hinge side	Push	42 inches (1065 mm) ¹	22 inches (560 mm) ^{3,4}
From latch side	Pull	48 inches (1220 mm) ²	24 inches (610 mm)
From latch side	Push	42 inches (1065 mm) ²	24 inches (610 mm)

¹Add 6 inches (150 mm) if closer and latch provided.
²Add 6 inches (150 mm) if closer provided.

³Add 12 inches (305 mm) beyond latch if closer and latch provided.
⁴Beyond hinge side.

Notes: Lockers obstruct clearance requirements