

Clark County

Padden Parkway at Andresen Road Stormwater Facility

Clean Water Program

October 2012



The Clean Water Program has recently partnered with Clark County Public Works to construct a new stormwater pond in the Curtin Creek watershed. The project created a 4.0 acre stormwater pond that will hold 2.3 million gallons of runoff or enough to fill a football field 5 feet deep! The pond will collect and treat runoff near the intersection of the Padden Parkway and Andresen Road (from current pavement, as well as future anticipated expansion of the intersection).

The benefits of this project include:

- Reduces peak runoff by 53%
- Allows clean water to infiltrate into ground
- Removes over a ton of sediment from runoff each year
- Provides bird and other wildlife habitat
- Creates an aesthetically pleasing natural area
- Uses gentle side slopes to limit the need for fencing

Project Facts:

Location:	NE corner of Padden Parkway & Andresen Road
Watershed:	Salmon Creek (Curtin Creek subwatershed)
Budget:	\$1.6 million
Funding:	Clark County Clean Water Program
Construction:	Grading - summer / fall 2012
	Planting - late 2012 / early 2013

For more information about
the Clean Water Program:

Ron Wierenga,
Division Manager

(360) 397-2121 ext 4264

E-mail: Ron.Wierenga@clark.wa.gov

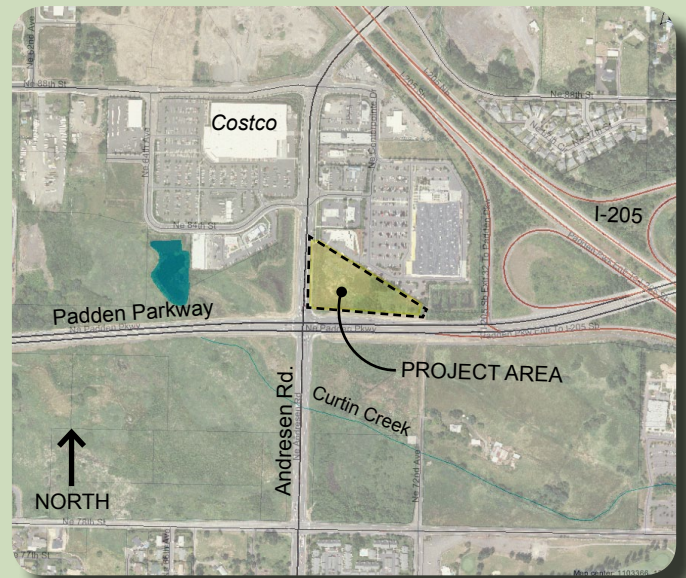
Stream Health Fact: According to the 2010 Clark County Stream Health Report, Curtin Creek has "poor" water quality & biological health and "good" flow.



Why a basin here and what is it?

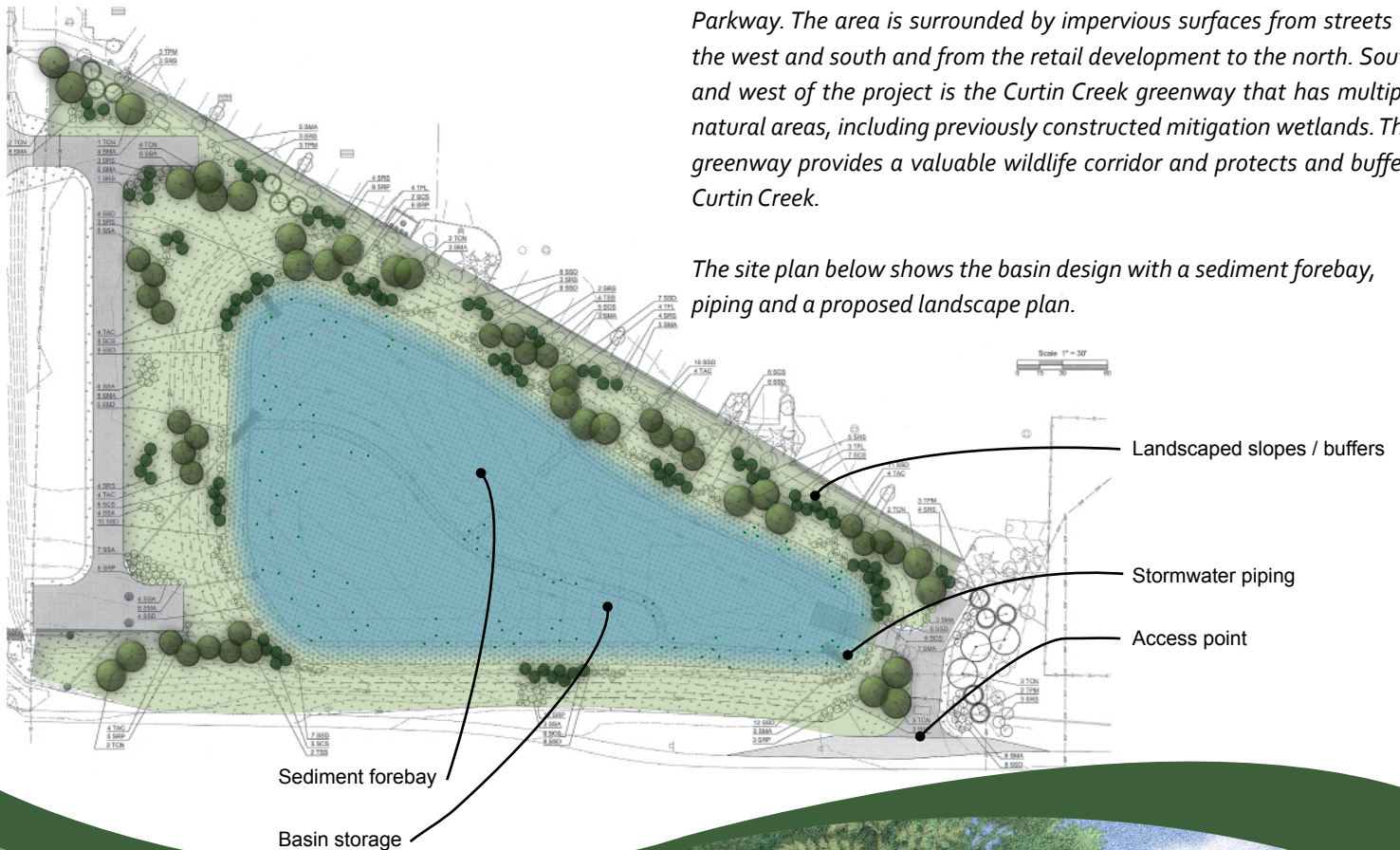
Federal, state and local laws require the county to manage polluted storm runoff by treating the water and controlling peak flows. Without proper stormwater management, runoff picks up oil, fertilizers, pesticides and pet waste and carries the pollutants into streams and waterways, which can harm fish and other aquatic life as well as cause erosion to the creek.

The project involves installing storm pipes, grading and excavation of the area, including the removal of existing soil and vegetation. The project will include extensive plantings for polluted runoff treatment and beautification.



The aerial photograph above shows the project area north of Padden Parkway. The area is surrounded by impervious surfaces from streets to the west and south and from the retail development to the north. South and west of the project is the Curtin Creek greenway that has multiple natural areas, including previously constructed mitigation wetlands. This greenway provides a valuable wildlife corridor and protects and buffers Curtin Creek.

The site plan below shows the basin design with a sediment forebay, piping and a proposed landscape plan.



Clark County Environmental Services
P.O. Box 9810
Vancouver, WA 98660

(360) 397-2121
www.clark.wa.gov/environment

