

Heritage Farm Sustainability Plan

Steering Committee Meeting # 6
Lynde Wallick, Park and Trails Planner
January 3, 2024



Welcome!

Joining us remotely? Here are some things to know—

- The meeting is being recorded.
- Steering committee members joining remotely may participate in the discussion.
- The public may observe the meeting but may not ask questions or participate. Join us at the January 24, 2024 open house to ask questions and share your thoughts.



Agenda

Welcome and introduction

Progress since the last meeting

Next steps

Steering Committee thoughts

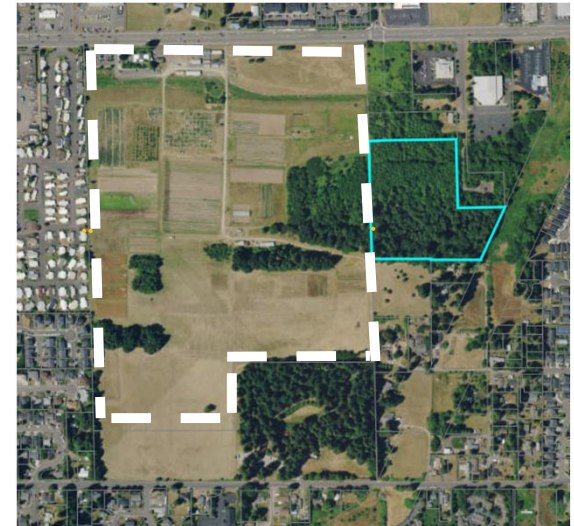
Open discussion

Open house info & next steps



Plan development progress

- Met with LULAC to complete the “Build the Farm” workshop
- Completed purchase of the Hidden property.
- Provided plan updates to the Heritage Farm Advisory Team and Historic Preservation Commission.
- Met with Council regarding conservation covenant or easement.
- Developed draft sustainability plan



Next steps

Administrative steps to complete the plan:

- Steering committee provides written comments – by Jan 5, 2024
- Draft plan posted – by January 17, 2024
- Open House – January 24, 2024 (6 – 8 p.m.)
- Public comment period – January 17 – February 23, 2024
- Present final Sustainability Plan to Park Advisory Board – March 12, 2024
- Present final Sustainability Plan to Clark County Council – April 2024



Next steps

Near term next steps:

- Finalize lease adjustments and revenue schedule for farm services and infrastructure usage.
- Begin development of a public access trail with interpretive stops, with construction completed in 2027.
 - First steps in the process will include working with farm user groups to understand safety and security concerns.
 - First phase of trail development may include access from Hazel Dell CP or the NE corner of Heritage Farm dependent upon trail feasibility.

NEXT STEPS

Much has been accomplished during the development the 78th Street Heritage Farm Sustainability Plan, but much needs to be done to implement the preferred alternative outlined above. Primary among the tasks outlined below is to continue to strengthen to relationships and build trust with the existing farm partners. Hence, it's place at the top of the list of Next Steps for plan implementation.

1. Improve relationships and communication lines with existing farm partners.
2. Build on the trust developed during the development of this plan.
3. Explore additional farm partner relationships as they arise and evaluate those relationship as they relate to the guiding principles outline in the adopted 78th Street Heritage Farm Master Plan.
4. Finalize equitable land lease program and negotiate new leases with current farm partners.
5. Develop a cost for services and infrastructure for compensation for services rendered by the county to the farm partners.
6. Analyze current cost sharing and operations relationships between the county and farm partners. Adjust any existing relationships to ensure appropriate land use, access and community equity.
7. Develop a first phase of public access improvements to include interpretive and recreational trails, educational sites and general recreation amenities consistent with the adopted master plan.
8. Develop a safety and security plan associated with the public access improvements to be implemented.
9. Explore additional revenue generation options such as the Vancouver/ Clark County leaf litter composting and sales program.

Near term efforts will include finalizing equitable land leases and a schedule for farm services and infrastructure usage. In the near term PLD will work toward the development of a public access trail with educational stops focused on farm history, food production and the natural world by 2027. The first phase of trail development may access the site from the southwest or northeast depending on initial trail feasibility work already in process.

Heritage Farm is a special place for many people. It has a long significant history of meeting the needs of the people of the region at any given time in the past.

It is the primary objective of this plan and Clark County to continue that sense of service and expand the love for Heritage Farm to even more Clark County residents.



Steering committee thoughts

- **Steering committee member thoughts**
 - What do you think of the plan overall?
 - What did you like about it?
 - What did we miss?
 - What did we get wrong?
 - What do you wish was different?
- **Open discussion**



Open house info & Next steps

Open house info:

- January 24, 2024 6 – 8 p.m. Minnehaha Elementary School, Commons area
- We will have snacks and beverages, activity table for kids
- Signs going up next week, mailers going out, news release, social media posts, emails, etc.
- Agenda:
 - Introductions (including you!)
 - Plan development update
 - Results of survey, public comments and interviews
 - Plan overview
 - How to provide feedback
 - Next steps
 - Q & A session

Comment period – will be open through February 23, 2024

Park Advisory Board – March 12, 2024 (you will receive an invite)

Council meeting – April TBD (you will receive an invite)



2010 Master Plan



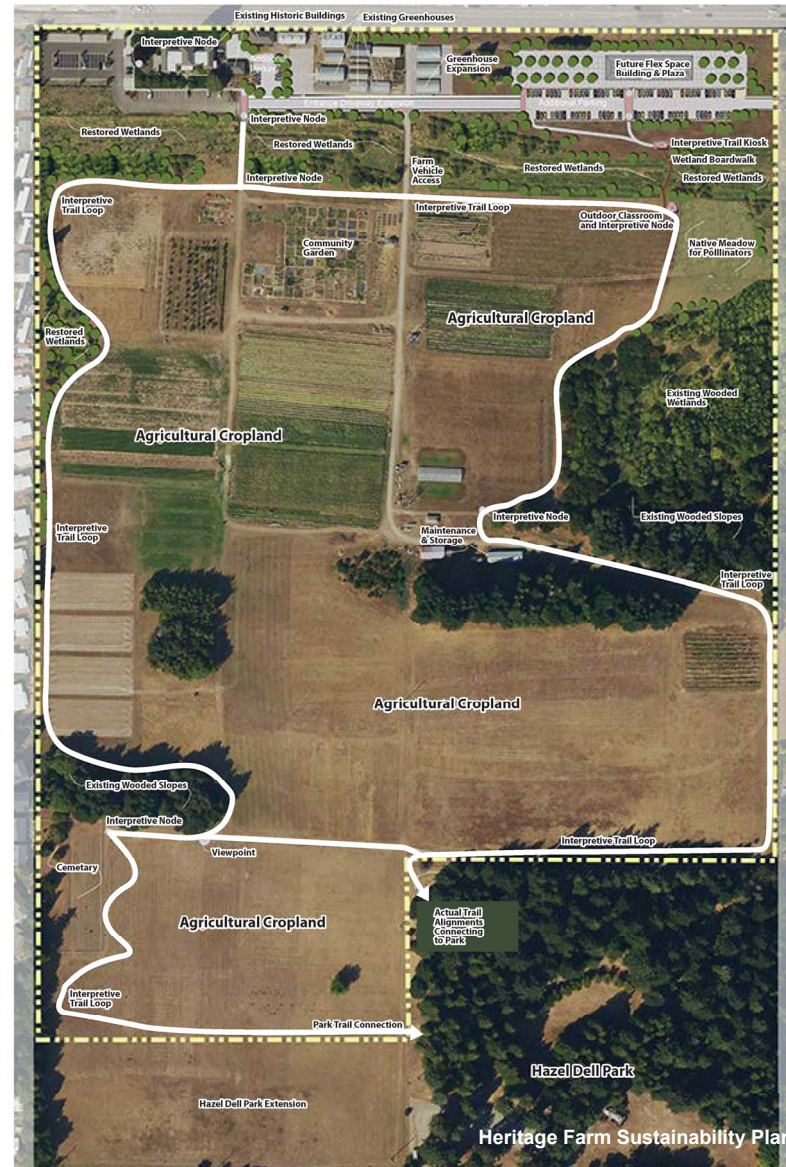
Based on recent public comment on the concept plans, the master plan may incorporate or continue to incorporate the following elements:

- An agricultural based community learning and historic interpretation building
- Staff offices for the WSU Extension
- Community Gardens
- Food Bank garden plots
- Farmers Market
- Certified organic garden
- Master Gardener greenhouse and plant sales
- Outdoor classroom
- Enhanced wetlands
- Living Farm
- Pedestrian and bike trails
- Expansion of the Hazel Dell Park
- Site specific, local, organic restaurant
- Enhance existing cemetery
- View point
- Historic interpretation
- Demonstration areas
- Community meeting space
- Historic wooden stave silo and interpretive area
- Retain existing utility easements and wells
- Potential future cross circulation road

Contact Information
www.clark.wa.gov/78WSU
 360-397-2323
Mark.McCauley@clark.wa.gov



2020 Master Plan



Programmatic Elements

Heritage Farm Sustainability Plan Programmatic Elements - Options Comparison

Programmatic Elements	Alternatives			Group Selections						
	1	2	3	1	2	3	4	5	6	
	Enhanced Farm	NGO Managed	Agri-Park							
WSU Extension Services	☒	☒	☒	✓	✓	✓	✓	✓	✓	
Land Lease / Agriculture Based Elements										
Incubator farming programs	☒	?	☒	✓	✓	✓	✓	✓		
Community gardens	☒	?	☒	✓	✓	✓	✓	✓		
Agricultural leased space	☒	?	☒	✓	✓		✓	✓	✓	
Agricultural research leased space	☒	?	☒	✓	✓	✓	✓			
Community supported agriculture		?						✓		
Food production for underserved communities		?	☒		✓	✓	✓	✓		
Food is Free garden		?								
Leased Space (Greenhouses, Etc.) Elements										
Farmers' market		?			✓			✓		
Farm stand		?	☒	✓	✓				✓	
Food processing hub		?				✓				
Multise building for private and public events		?	☒	✓		✓	✓	✓	✓	
Farm events programming	☒	?	☒	✓	✓	✓	✓	✓	✓	
Vancouver & Clark leaf litter composting		?		✓	✓		✓			
Park & Public Access Elements										
Community trails - open to the public		?	☒	✓	✓	✓	✓	✓	✓	
Farm tour trails - controlled access	☒	?	☒		✓	✓	✓			
Farm-park amenities		?	☒		✓			✓		
Homestead attraction and classes		?						✓		
Children's play area		?	☒		✓		✓			
Farm historic tours	☒	?	☒	✓	✓	✓	✓	✓	✓	
Agriculture Educational Program Elements										
Animal barn & youth animal programming		?								
Composting education	☒	?	☒	✓	✓	✓	✓		✓	
Early childhood educational / preschool		?	☒	✓	✓	✓			✓	
Community outdoor classroom		?	☒	✓	✓	✓		✓	✓	
School district programs		?	☒	✓	✓	✓	✓	✓		
Continuing agricultural education for adults	☒	?	☒	✓		✓		✓	✓	
Farm to Table programming		?	☒	✓		✓			✓	
Agriculture based job training programs		?		✓	✓					
Equine programs		?								
Horticulture education programs	☒	?	☒		✓	✓	✓			
Non-agriculture Based Programming										
Secure housing programming		?								
Green energy demonstration		?			✓				✓	
Write In Elements										
Children's garden		?				✓				
Cross country track meets		?					✓			



Cost Recovery

Heritage Farm Sustainability Plan Cost Recovery - Options Comparison

Cost Recovery Options	Alternatives									
	1	2	3	Group Selections						
	Enhanced Farm	NGO Managed	Agri-Park	1	2	3	4	5	6	
General Fund				✓		✓	✓	✓		
Metropolitan Park District Fund				✓	✓	✓		✓		
Equitable lease adjustments		?		✓	✓	✓	✓	✓		
Fee for farm services		?		✓	✓	✓	✓	✓		
Friends of the Farm membership		?			✓					
Friends of the Farm fundraising		?		✓	✓	✓	✓	✓		
Educational institution partnership		?		✓	✓	✓	✓			
NGO/non-profit management						✓				
Farm entire property										
Grants				✓	✓	✓	✓	✓		
Parking fees		?		✓	✓		✓			
Donation items		?		✓	✓	✓	✓	✓		
Revenue percentage from sold items		?		✓	✓					
Corporate sponsorship		?			✓			✓		
Wind or solar farm power generation		?			✓					
Vancouver/Clark County leaf litter composting and sales program		?		✓	✓		✓			
<i>Write Ins</i>										
Cowlitz Tribe partnership		?					✓			
Biodigester		?							✓	
Carbon sequestration		?							✓	

Legend

/ Agricultural Element

/ Educational Element

/ Recreational Element

? / Element would be Selected by NGO Partner

✓ / Element Selected by Steering Committee Group in Workshop



Thank you for joining us! The presentation has ended.

Read the plan, learn more about its development & current farm uses:

clark.wa.gov/public-works/heritage-farm-sustainability-plan

Comments and questions:

- ***Please submit written comments:***
 - Email us: PWProjects@clark.wa.gov
- ***Join stakeholders' list:***
 - Receive more direct communication
 - Email: Lynde.Wallick@clark.wa.gov

