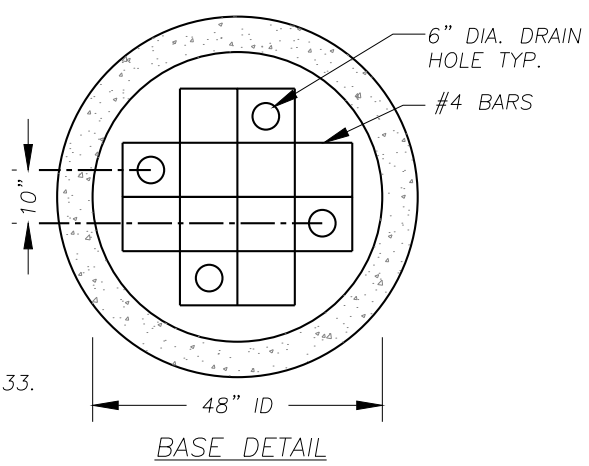


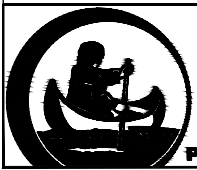
NOTES:

1. ALL PRECAST SECTIONS SHALL CONFORM TO REQUIREMENTS OF A.S.T.M. C478.
2. PRECAST CONE SECTIONS MAY BE ECCENTRIC OR CONCENTRIC.
3. ALL PIPING TO AND FROM PRECAST DRYWELLS SHALL HAVE AT LEAST 8" OF CRUSHED ROCK COVER CONTINUOUSLY AROUND PIPE WHERE DRAIN ROCK WOULD OTHERWISE BE IN CONTACT WITH PIPE.
4. PERFORATIONS SHALL BE HORIZONTAL ROWS OF (14) 2-1/4" SQUARE OR (14) 2-3/8" ROUND HOLES, EQUALLY SPACED. ROWS SHALL BE SPACED 6-1/2" CENTER TO CENTER.
5. GRAVEL BACKFILL FOR DRYWELLS PER WSDOT STANDARD SPECIFICATIONS 9-03.12(5).
6. UNDERGROUND DRAINAGE GEOTEXTILE, MODERATE SURVIVABILITY, CLASS A. SEE WSDOT SPECIFICATIONS 9-33.
7. TYPICAL DRYWELL DEPTH IS 13'.
8. SEEPAGE PORT ORIENTATION VARIES AMONG MANUFACTURERS.



NO.	REVISIONS	DATE	BY

DWG: D10.DWG



Department of Public Works
CLARK COUNTY
 WASHINGTON
 proud past, promising future

PRECAST CONCRETE DRYWELL

[Signature]
 COUNTY ENGINEER

APPROVED
 01/07/16
 DATE

STANDARD
D10
 DETAIL
 DESIGNED
 DRAWN
 DATE 01/30/15