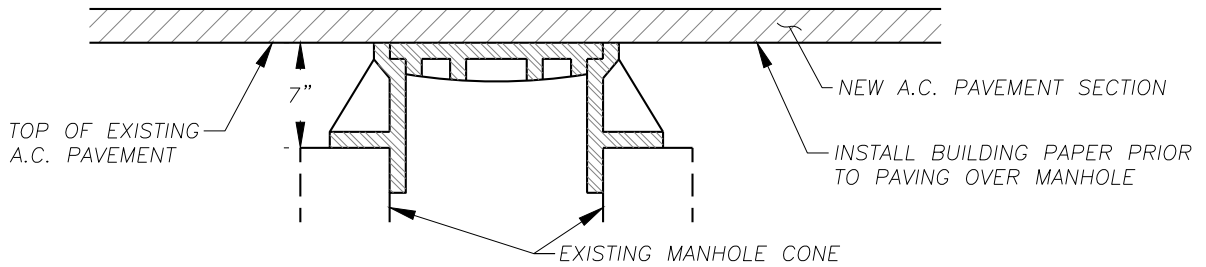
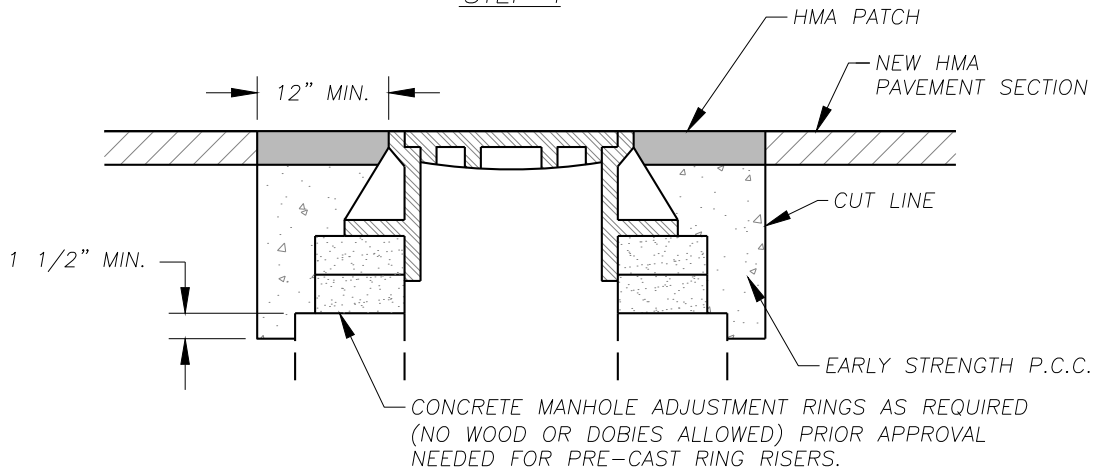


**NOTE:**  
 RAISE ALL STRUCTURES TO  
 FINAL GRADE PRIOR TO  
 FINAL LIFT OF PAVEMENT.  
 IF UNABLE TO RAISE PRIOR  
 TO FINAL LIFT, FOLLOW  
 STEPS BELOW.



STEP 1



STEPS 2,3,4 & 5

- STEP 1 COVER EXISTING MANHOLE WITH BUILDING PAPER AND CONSTRUCT HMA PAVEMENT PER WSDOT SPEC. 5-04.3 OVER TOP OF MANHOLE.
- STEP 2 SAW CUT AND REMOVE PAVEMENT AROUND MANHOLE 12" MIN. FROM MANHOLE FRAME.
- STEP 3 RAISE MANHOLE FRAME AND COVER USING CONCRETE RINGS AND COUNTY APPROVED MECHANICAL ADJUSTMENT DEVICES TO FINISH GRADE MATCHING PROFILE AND CROSS SLOPE.
- STEP 4 BACKFILL WITH EARLY STRENGTH P.C.C. AND HMA TO DEPTHS AS DIRECTED.
- STEP 5 APPLY SAND SEAL ON SURFACE AND SURFACE JOINT.

NO.	REVISIONS	DATE	BY

DWG: F27.DWG



Department of  
 Public Works  
**CLARK COUNTY**  
 WASHINGTON  
 proud past, promising future

MANHOLE ADJUSTMENT

*[Signature]*  
 APPROVED  
 COUNTY ENGINEER

01/26/16  
 DATE

STANDARD  
**F27**  
 DETAIL  
 DESIGNED  
 DRAWN  
 DATE 01/26/16