

Pollinator patch.....



- Annual lupine
- Bee balm
- Blanket flower
- Blue sage
- Butterfly milkweed
- Cosmos sensation mix
- Crimson clover
- Lance-leaved coreopsis
- Lacy phacelia
- Lemon mint
- Mexican hat
- Partridge pea
- Perennial lupine
- Plains coreopsis
- Purple coneflower
- Poached egg meadow-foam
- Rocky Mountain penstemon
- Sunflower

What pollinators do you see?



Source: Wikipedia



Tiger moth



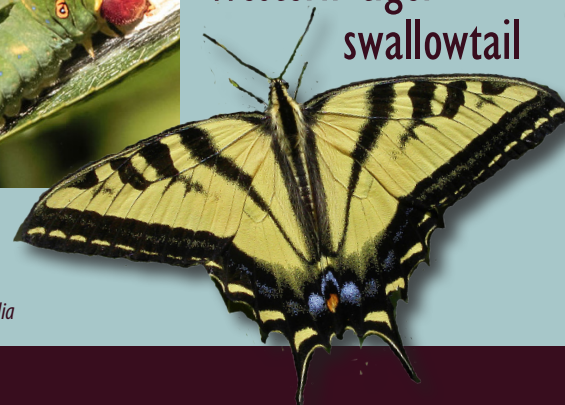
Source: WDFW

Cabbage white



Source: Wikipedia

Western tiger swallowtail

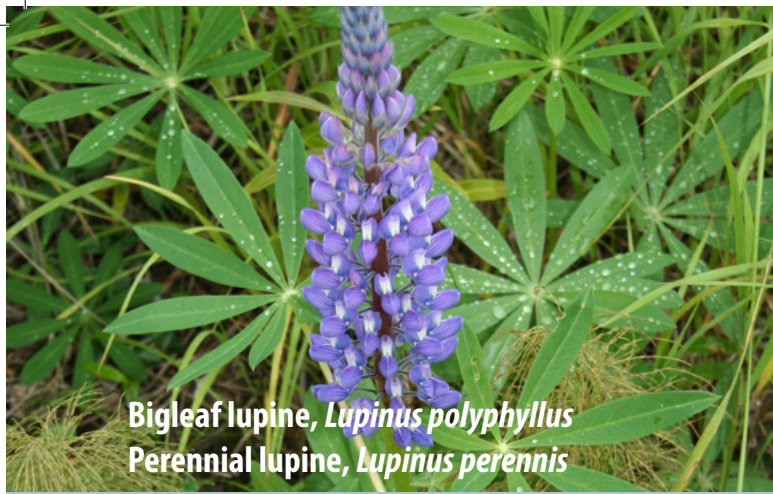


This demonstration pollinator patch is a collaboration between Clark County and the Washington State Noxious Weed Control Board



Washington State
Noxious Weed Control Board

Learn more about what you can do to support pollinators at:
www.nwcb.wa.gov



Bigleaf lupine, *Lupinus polyphyllus*
Perennial lupine, *Lupinus perennis*



Bee Balm, *Monarda* spp.



Blanketflower, *Gaillardia aristata*



Blue sage, *Salvia* spp.



Butterfly milkweed, *Asclepias tuberosa*



Cosmos Sensation Mix, *Cosmos bipinnatus*



Crimson clover, *Trifolium incarnatum*



Lance leaf coreopsis, *Coreopsis lanceolata*



Lacy phacelia, *Phacelia tanacetifolia*



Lemon mint, *Monarda citriodora*



Mexican hat, *Ratibida columnifera*



Partridge pea, *Chamaecrista fasciculata*



Plains coreopsis, *Coreopsis tinctoria*



Purple coneflower, *Echinacea purpurea*



Poached egg meadowfoam, *Limnanthes douglasii*



Rocky mountain penstemon, *Penstemon strictus*



Sunflower, *Helianthus* spp.

These plants are part of the Bee-U-tify pollinator project.

Stay on the trail. Keep pets out.

Photo sources: Wikipedia, Lady Bird Johnson Wildflower Center, USDA, Washington State



Washington State
Noxious Weed Control Board

Learn more about what you can do to support pollinators at: www.nwcb.wa.gov