


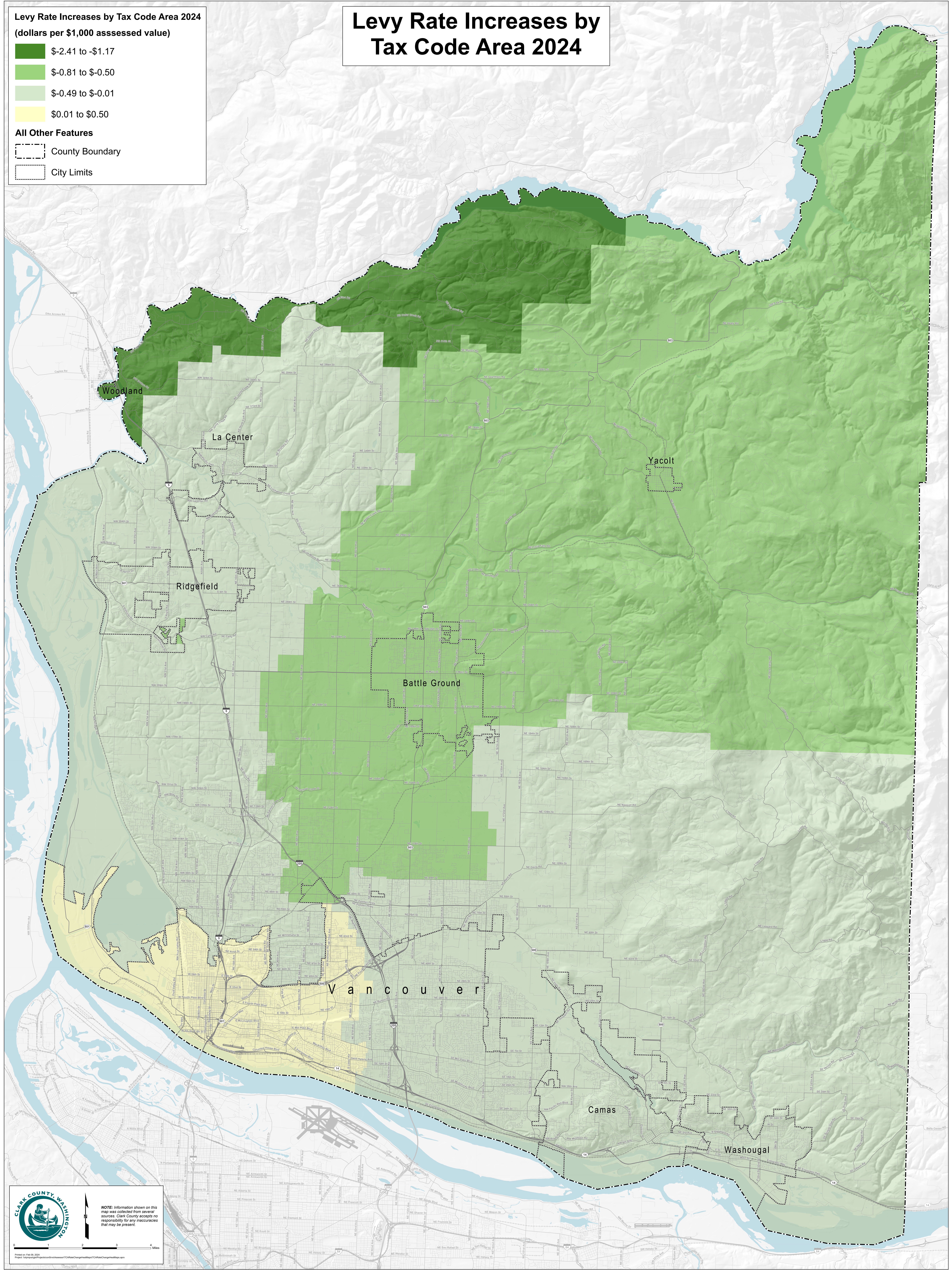
Levy Rate Increases by Tax Code Area 2024
(dollars per \$1,000 assessed value)

- \$-2.41 to -\$1.17
- \$-0.81 to \$-0.50
- \$-0.49 to \$-0.01
- \$0.01 to \$0.50

All Other Features

- County Boundary
- City Limits

Levy Rate Increases by Tax Code Area 2024



NOTE: Information shown on this map was collected from several sources. Clark County accepts no responsibility for any inaccuracies that may be present.

0 1 2 3 4 Miles

Project: TaxMap\GIS\Projects\Assessor\TCAResChange\Map\TCAResChange\Map.aprx