

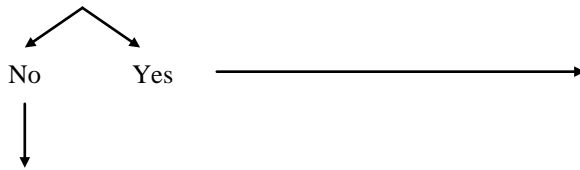
Appendix K
Decision Tree for Assessing SWMP Applicability and Enforcement Status
In Relation to Special Waste Collection and Disposal

Are wastes regulated under state & federal hauling & disposal laws (e.g. hazardous waste, dangerous waste, biomedical waste, contaminated soil, etc.?)
(testing & other documentation may be required by the local jurisdiction)



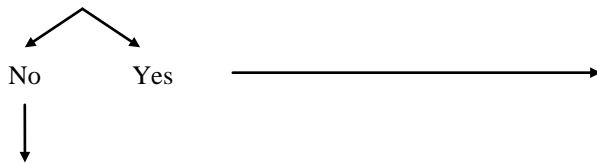
Hauling and/or disposal must comply with applicable federal and state laws

Are wastes being self-hauled?



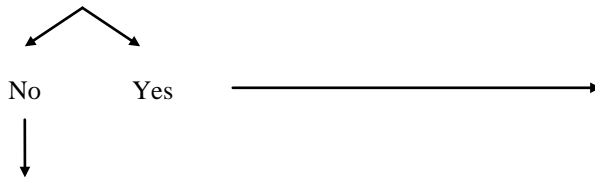
Waste may be delivered to a facility/market "outside" the County's solid waste management system

Are wastes source separated and will be reused, recycled, composted or used for energy recovery, including beneficial use and soil amendment?
(testing & other documentation may be required by the local jurisdiction)



Commercial Recycler or Dropbox operator may collect and deliver waste to a facility for reuse, recycling, composting, or energy recovery. Every operator needs to comply with local jurisdictions registering and/or licensing regulations

Are wastes of a large volume or have special physical attributes?
(such volume or attributes could not be handling at County contracted transfer stations?)



Staff documents situation and makes recommendation to Public Works Directors

Exclusive garbage collection contracts (City) or WUTC permits (County) dictate who collects; the rates and services provided; and where material is disposed.

Final determination made by the jurisdiction's and County's Public Works Directors

Material may be hauled by any licensed common carrier and taken directly to a permitted disposal facility