



Discover
the amazing
Legacy Lands
of Clark County

Preserving a lasting legacy

Clark County's diverse natural landscape consists of broad river valleys, narrow creek canyons, wetlands, lakes, riparian zones, forests, mountains, meadows, foothills and farms. Clark County's Legacy Lands Program (Conservation Futures Program) is managed by Environmental Services. This program was instituted in October 1985, when the Board of County Commissioners adopted a property tax levy of 6.25 cents per \$1,000 of valuation to protect open space from threats such as urban development and habitat degradation. Protected lands provide a vital green infrastructure that connects our community, protects our water and air, preserves corridors for

wildlife, and provides recreational opportunities. The program's primary county revenue source is the Conservation Futures levy. It has supported more than 45 distinct acquisitions. Local revenues combined with grants and donations purchased these scenic properties.

In addition, acquisitions occurred through the state Department of Natural Resources Trust Land Transfer Program and privately owned land donations. The county also coordinates its acquisitions with other land conservation entities such as the U.S. Fish and Wildlife Service, Washington State Department of Fish and Wildlife, cities, towns and private land trusts.

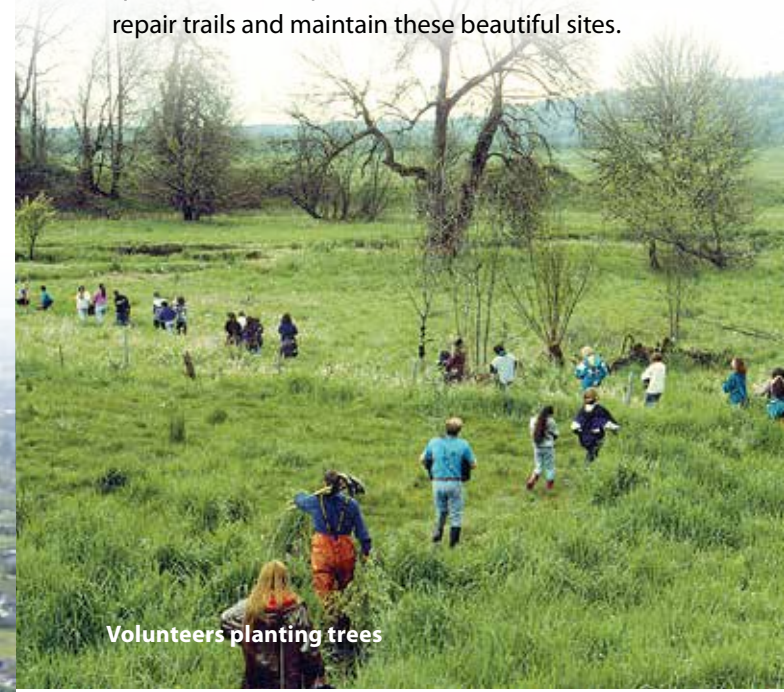
Find out more about the program and properties at www.clark.wa.gov/legacylands.



Salmon Creek Greenway Trail

Stewardship and volunteering

You can play an important role in maximizing the natural value of lands through resource protection, restoration and site stewardship. Volunteer to work with our partner agencies to remove invasive species and litter, plant native trees and shrubs, repair trails and maintain these beautiful sites.




Volunteers planting trees

Find out more about the program and properties at www.clark.wa.gov/legacylands.

Legacy Lands program is coordinated by the Clark County Public Works, Parks and Lands Division Pat Lee, Manager
1300 Franklin St., Vancouver, WA 98666-9810
(360) 397-2121 patrick.lee@clark.wa.gov



 For other formats, contact the Clark County ADA Office:
Voice (360) 397-2322; **Relay** 711 or (800) 833-6388;
Fax (360)397-6165; **E-mail** ADA@clark.wa.gov.

Waterfalls and rivers

With over eight major river systems covering more than 1,700 miles, there is scenic beauty throughout the county. From babbling urban streams to gushing forested rivers, Clark County has an exceptional variety of waterways. Local urban streams offer beauty along greenways and habitat for wildlife. Our rivers have iconic views with lots of rocky rapids, dramatic waterfalls and serene pools.

Natural areas, parks and trails

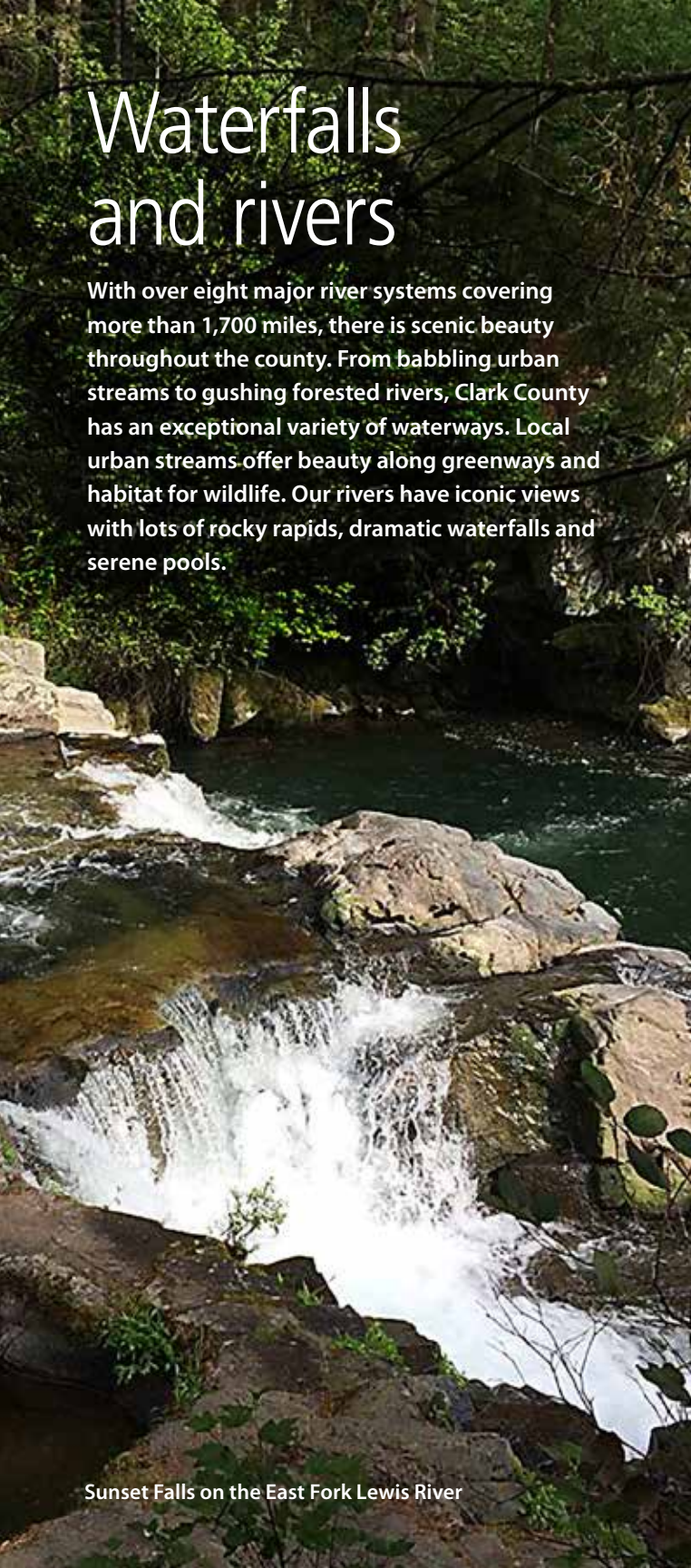
Conservation properties are great for community recreation. Put on your hiking boots, saddle up your horse or pack a picnic. Plan an adventure and visit over 25 properties that are open for exploring. Many properties are close to home if you only have an hour, while others are great trips for all day adventures. Many conservation properties include amenities such as parking, trails and interpretive signs.

Fishing and boating

Clark County's river systems include more than 30 miles of water trails along Lake River and the Lewis. Boat ramps throughout the county allow easy launching for kayaks, canoes and drift boats. Float downstream to enjoy the view, look for wildlife or try your hand at catching steelhead trout or salmon. Protection of these rivers is critical to the health of waterways and fish that call them home.

Wildlife viewing

As you walk through forest lands, listen to the tree canopy for bird calls from ravens, owls, warblers and wrens. All sorts of animals wander the properties, from black bear, deer and squirrels, to newts and frogs. When near a river, it is easy to spot American bald eagles or osprey but keep your eyes open for more elusive critters such as otters and beavers. Make sure to bring your binoculars.



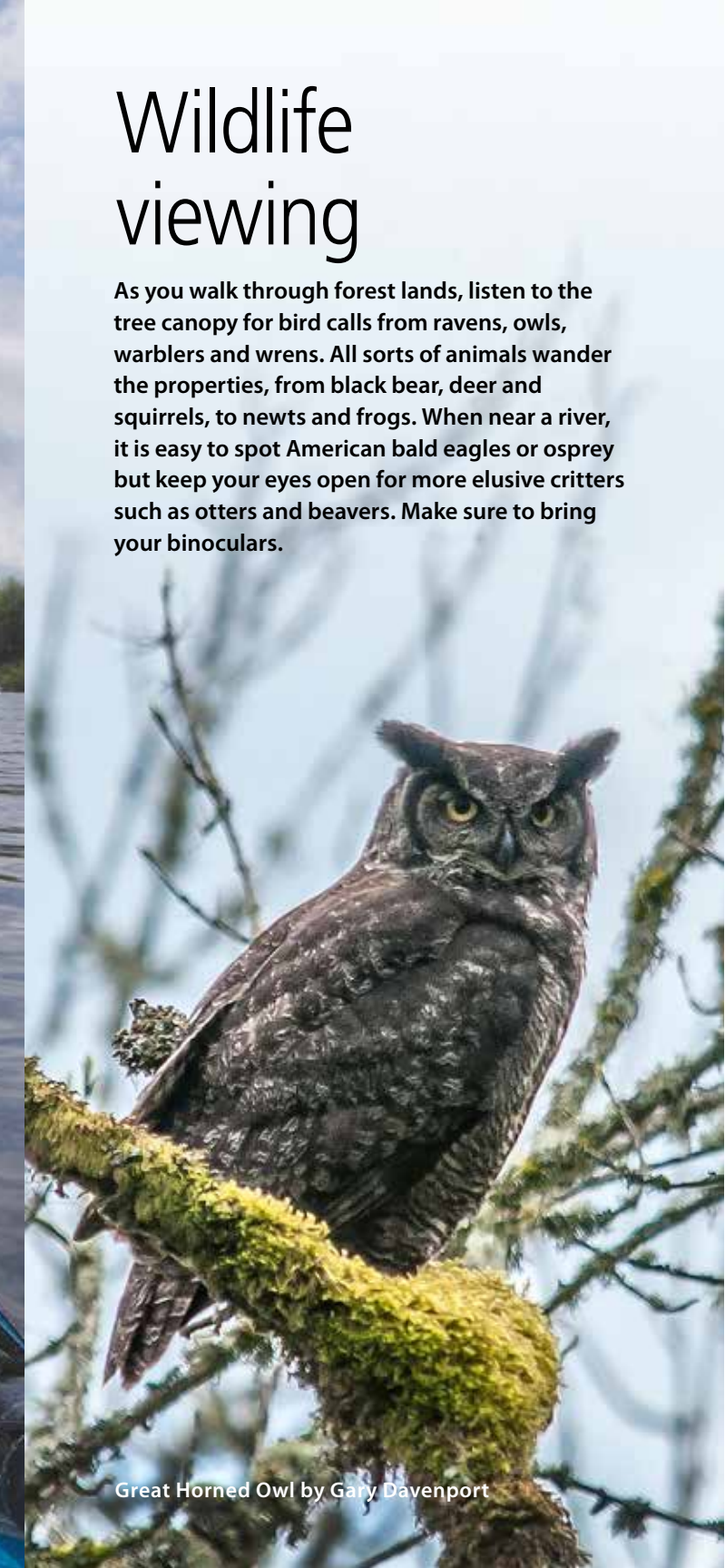
Sunset Falls on the East Fork Lewis River



Hiking at Whipple Creek Hollow by GAP Media



Kayaking on Lake River



Great Horned Owl by Gary Davenport

Explore Legacy Lands

With over 5,000 acres of conservation and natural areas in public ownership, we have wonderful opportunities to explore the great outdoors. The properties fall into two categories:

PASSIVE RECREATION. Enjoy hiking, fishing, birding and boating in beautiful environments that also provide rich habitats for fish and wildlife.

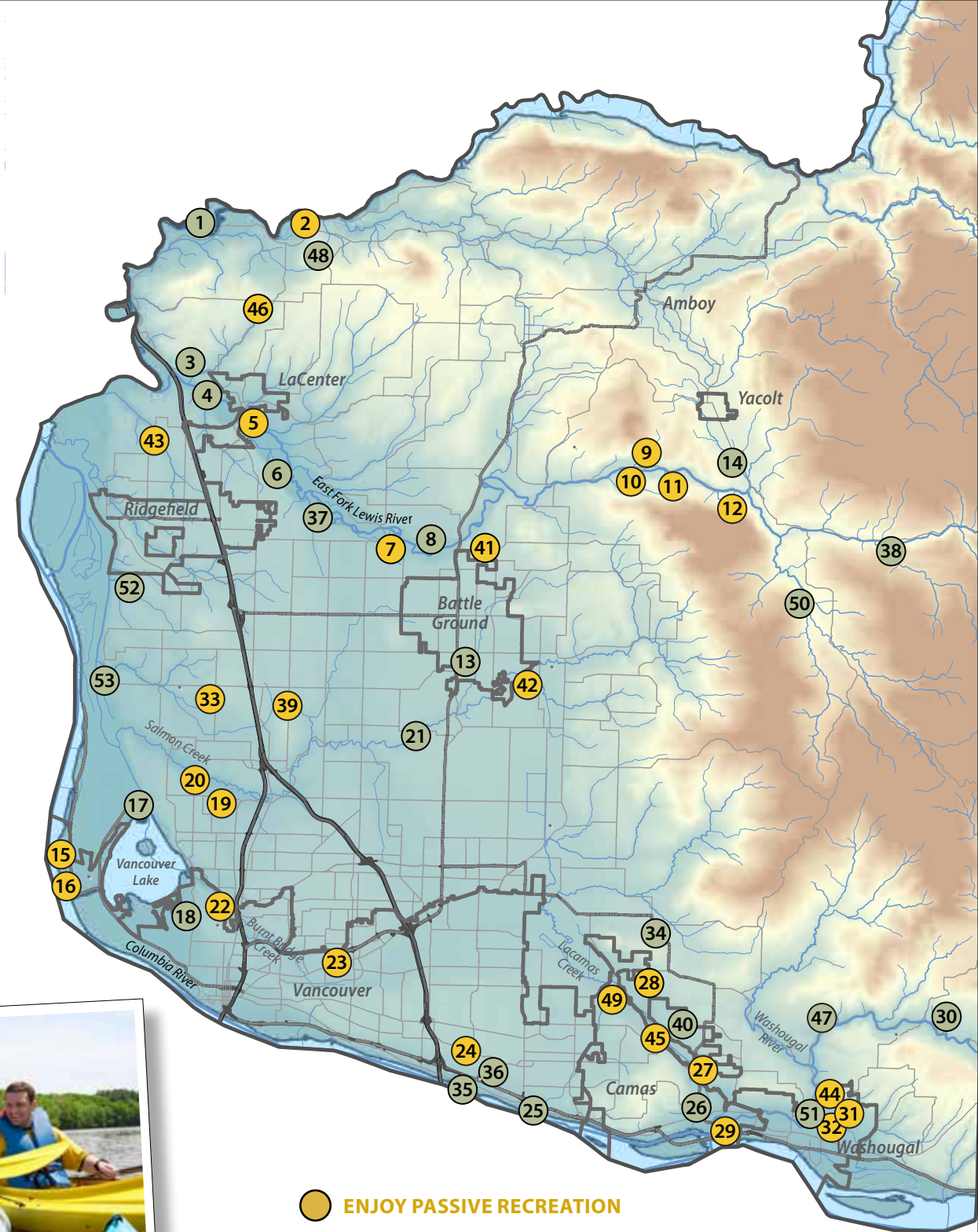
CONSERVATION AREAS. Conservation properties protect critical areas such as river corridors that are vital to the health of protected fish species such as salmon and trout. While not used for recreation, there are volunteer and stewardship opportunities such as native planting and invasive species removal in these areas.

OPEN FOR PASSIVE RECREATION

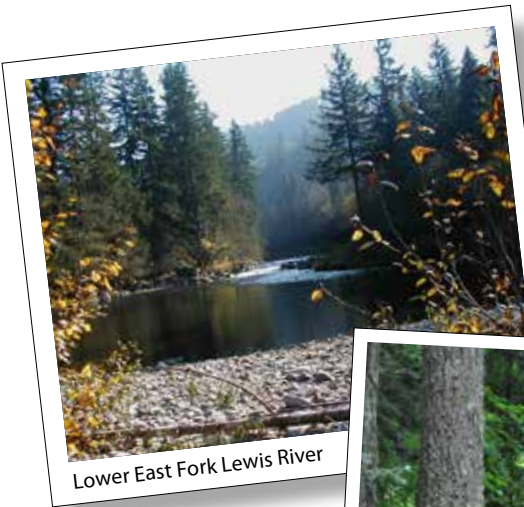
2. Haapa Boat Launch
5. La Center Bottoms Wetlands
7. Lower Daybreak Park
9. Lucia Falls (North)
10. Lucia Falls (South)
11. Upper East Fork Lewis River Greenway
12. Moulton Falls
15. Frenchman's Bar
16. Frenchman's Bar Trail
19. Cougar Creek Greenway
20. Salmon Creek Greenway
22. Burnt Bridge Creek Greenway
23. Burnt Bridge Creek Lettuce Fields
24. East Biddle Lake at Columbia Springs
27. Fallen Leaf Lake
28. Camp Currie
29. Washougal River Greenway (Lower)
31. Rolling Meadows
32. Campen Creek
33. Whipple Creek Regional Park
39. Whipple Creek Hollow
41. Camp Lewisville Addition (Camp Hope)
42. Salmon-Morgan Creeks Natural Area
43. Lake Rosannah
44. Hartwood Park
45. Lacamas Lake Shoreline
46. Bratton Canyon
49. Lacamas Heritage Trail

CONSERVATION AREAS:

1. Eagle Island
3. Paradise Bluff
4. Lower East Fork Lewis River Greenway
6. Lower East Fork Wildlife Area
8. Lewis River Ranch
13. The Oaks Natural Area
14. Lewis and Clark Regional Trail Corridor
17. Vancouver Lake Lowlands
18. Vancouver Lake Urban Wildlife Area
21. Brush Prairie
25. Columbia Shores at 164th Ave.
26. Ostenson Canyon
30. Washougal River Greenway (Upper)
34. Green Mountain
35. Columbia Grove/Woods Landing
36. Mimsi Marsh
37. Becker-Lower Dean Creek
38. Habersetzer-Upper East Fork Lewis River
40. Lacamas Lake Shoreline - Morris
47. Washougal River Greenway
48. Wilson-Quann Natural Area
50. Rock Creek Natural Area
51. Washougal River Greenway-Schmid
52. Flume Creek Natural Area
53. Green Lake



- ENJOY PASSIVE RECREATION
- CONSERVATION AREAS



Lower East Fork Lewis River



Hike the many trails



Steelhead trout at Lucia Falls



Sandhill Cranes ©Gary Davenport



Explore waterways by kayak

Park and Natural Area Highlights

Bratton Canyon (46)

- 80 acres of upland forest with nature trails and amenities

Burnt Bridge Creek Greenway (22, 23)

- Lush greenway along the creek through the center of Vancouver, includes forested areas, wetlands and meadows
- Eight miles of paved trails, access at several locations

Camp Currie (28)

- 248 acres of forest on the east shore of Lacamas Lake
- Camp Currie youth camp is managed by a non-profit partner, public access may be limited

Camp Lewisville/Camp Hope (41)

- Forested camp on the bank of the East Fork Lewis River
- Camp facilities are managed by a non-profit partner

East Biddle Lake at Columbia Springs (24)

- Forested and upland meadows surrounding the lake
- Excellent wildlife viewing

Fallen Leaf Lake Park (27)

- Reservable picnic shelter for up to 150 people
- Forested area west of lake with informal nature trails

Frenchman's Bar Regional Park and Trail (15, 16)

- Soft-surface trails throughout as well as paved trail connection to Blu Rock and Vancouver Lake Park
- Access to Columbia River shoreline, beach and upland forests
- Reservable picnic shelters; barbecue grills

Enjoy your visit!

- Visit www.clark.wa.gov/legacylands for links to trail maps, access directions and site specific information.
- Natural areas are open from 7 a.m. to Dusk.
- Plan ahead for your visit. Sites may have limited parking, trash cans, water or restrooms.
- Trails are typically natural surface with easy to moderate slopes and may include trip hazards.
- Pets must be on leashes at all times and owners are required to remove pet waste from the site.
- Camping and fires are not allowed on properties except at designated sites with proper permitting.

Haapa Boat Launch to East Fork Lewis River (2)

- Paved boat launch – flat bottom boat less than 20 feet length with access to North Fork Lewis River
- Barbecue grill; picnic tables; restroom and parking

Hartwood Natural Area and Park (31, 32, 44)

- Connects the Eldridge Park complex and wooded habitat along Campen Creek

Lacamas Lake Natural Areas (45, 49)

- Lacamas Lake Regional Park with Round Lake has miles of soft-surface trails and scenic views of Lacamas Creek, waterfalls, wildlife and spring flowers (Camas lily fields)

La Center Bottoms Wetlands Natural Area (5)

- Riparian habitat along the East Fork Lewis River and wetlands
- Interpretive signage including wildlife blind

Lower Daybreak Park (7)

- Boat ramp offers easy access to the East Fork Lewis River
- 112 acre natural area with trails and wildlife viewing

Lucia Falls and Moulton Falls Regional Park (9, 10, 11, 12)

- Waterfalls viewing, great for watching fish migration
- Moulton Falls trails (2.5 miles of gravel path) overlooking the East Fork Lewis River and historic bridge
- Forested canyon with wildlife viewing opportunities

Lake Rosannah Natural Area (43)

- Informal nature trails through woodlands
- Views of the lake and Allen Creek Canyon

Salmon Creek Greenway and Trail (19, 20)

- Three miles of paved trails through 368 acres of greenway
- Connects to the Cougar Creek trail
- Views of Mount Hood and wildlife
- Fishing/swimming pond at regional park

Salmon-Morgan Creeks Natural Area (42)

- Secondary growth Douglas fir and western red cedar forests
- Wildlife viewing opportunities along nature trails

Washougal River Greenway (30)

- Over 100 acres of green space along the river including bottomlands and shoreline
- Excellent opportunities on the river and wildlife viewing

Whipple Creek Hollow Natural Area (39)

- Forested site with diverse wildflowers and nature trails
- Scenic views of the Whipple Creek corridor

Whipple Creek Regional Park (33)

- Gravel-surface and soft-surface nature trails – 4.3 miles
- Forested canyons and uplands with wildlife and birding viewing

Legacy Lands	Address	Jurisdiction	Parking	Restrooms	Accessible	Picnic tables	Picnic shelters	Trails	Biking	Equestrian	Wildlife viewing	Boat launch	Small boat	Fishing	Camping 4
Bratton Canyon (Youth camp)	NW 389th St at 14th	Woodland	●	●		●	●	Nature							●
Burnt Bridge Creek Greenway	Multiple access points	Vancouver	●	●	●	●		Paved	●	●					
Camp Currie (Youth camp)	618 NE 232 nd Ave.	Camas	●	● ³	●		● ³	Nature							●
Camp Lewisville (Youth camp)	12800 NE Roper Rd	Battle Ground	●			●	●	Gravel							●
East Biddle Lake at Columbia Springs	12208 SE Evergreen Hwy	Vancouver	●			●		Nature		●					
Fallen Leaf Lake Park	2911 NE Everett	Camas	●	● ²	●	●	●	Nature		●		●			
Frenchman's Bar Regional Park and Trail	9612 NW Lower River Rd.	Vancouver	●	●	●	●	●	Multiple	●	●				●	
Haapa Boat Launch	43400 NE Haapa Rd.	Clark County	●	●	●	●		Paved		●	●	●	●		
Hartwood Natural Area/Park	2551 49 th St.	Washougal	●	● portable				Gravel		●					
Lacamas Lake Natural Areas	Everett and Lake Roads	Camas	●	●	●	●	●	Nature	●	●	●	●	●		
La Center Bottoms Wetlands	La Center Rd at 3 rd St. near Aspen Rd.	LaCenter	●		●			Gravel		●		●	●		
Lower Daybreak	NE 264th at Daybreak Rd	Battle Ground	●					Nature		●	●	●	●		
Lucia Falls and Moulton Falls Regional Parks	21803 and 27781 NE Lucia Falls Rd.	Clark County	●	● portable	●	●		Gravel	●	●	●			●	
Lake Rosannah Natural Area	NW 324 th St. at NW Allen Canyon Rd.	Clark County	● ¹					Nature		●					
Salmon Creek Greenway and Natural Area	1112 NE 117 th St.	Clark County	●	●	●	●	●	Paved	●	●				●	
Salmon-Morgan Creeks Natural Area	NE 161 st Ave. at NE 183 rd St.	Battle Ground	● ¹			●		Nature		●					
Washougal River Greenway	NE 3 rd Loop	Washougal	●					Paved	●	●		●	●		
Whipple Creek Hollow Natural Area	NE 22 nd Ave. at NE 164 th St.	Clark County	●					Nature		●					
Whipple Creek Regional Park	17202 NW 21 st Ave.	Clark County	●					Nature	●	●					

¹ On-street parking only
² Restrooms open for permitted events only
³ Available only through youth camp
⁴ Camping by permit only



Moulton Falls Regional Park by GAP Media

Leashed dogs are welcome on trails

Lacamas Lake Natural Areas

Learn to fish