

NOTES:

1. MANHOLES SHALL BE CONSTRUCTED IN ACCORDANCE WITH AASHTO M-199 UNLESS OTHERWISE SHOWN ON PLANS OR NOTED IN THE WSDOT STANDARD SPECIFICATIONS.
2. HANDHOLDS IN ADJUSTMENT SECTION SHALL HAVE 3" MIN. CLEARANCE. STEPS IN MANHOLE SHALL HAVE 6" MIN. CLEARANCE. SEE STD. DETAIL D1.5, "MANHOLE DETAILS."
3. MANHOLE RINGS AND COVERS SHALL BE IN ACCORDANCE WITH WSDOT STANDARD SPECIFICATIONS SEC. 7-05 AND MEET THE STRENGTH REQUIREMENTS OF FEDERAL SPECIFICATION RR-F-621D. MATING SURFACES SHALL BE FINISHED TO ASSURE NON-ROCKING FIT WITH ANY COVER POSITION.
4. ALL PRECAST CONCRETE SHALL BE CLASS 4000.
5. FOR DETAILS SHOWING GRADE RING, LADDER, STEPS, HANDHOLDS, AND TOP SLABS, SEE STD. DETAIL D1.5, "MANHOLE DETAILS."
6. NOT FOR USE IN TRAFFIC BEARING AREAS.

DWG: D1.4.DWG



Department of Public Works
CLARK COUNTY WASHINGTON
 proud past, promising future

MANHOLE TYPE 4

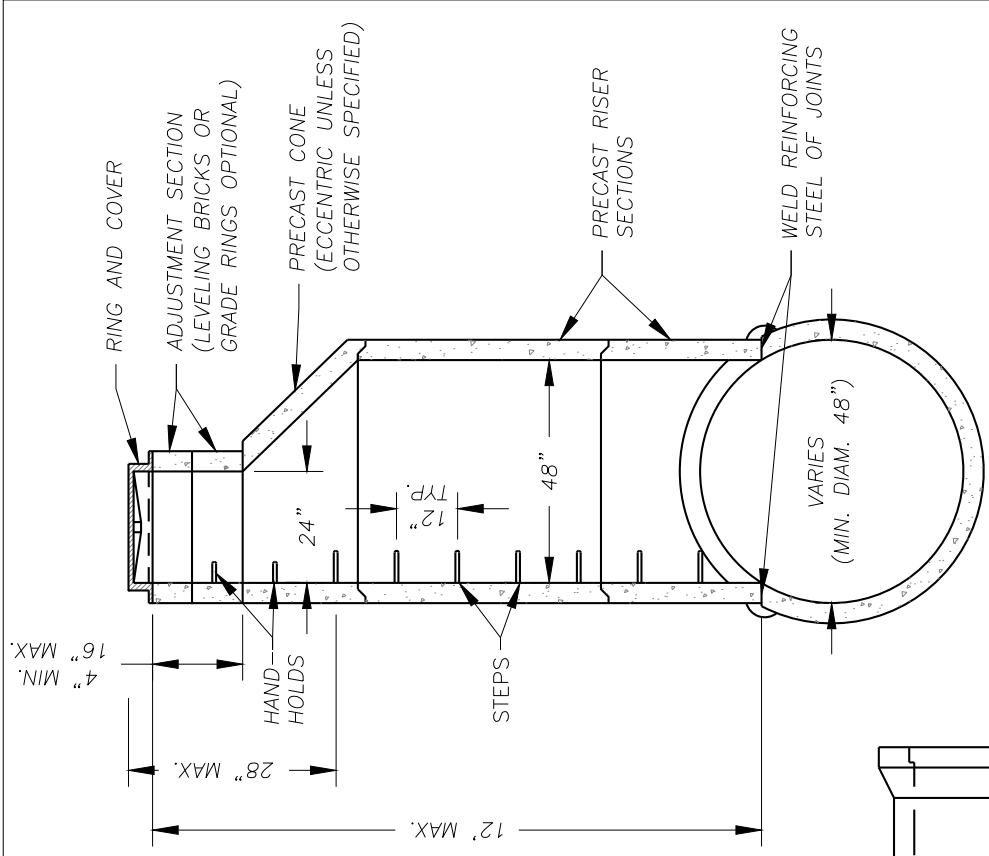
[Signature]
 COUNTY ENGINEER

APPROVED

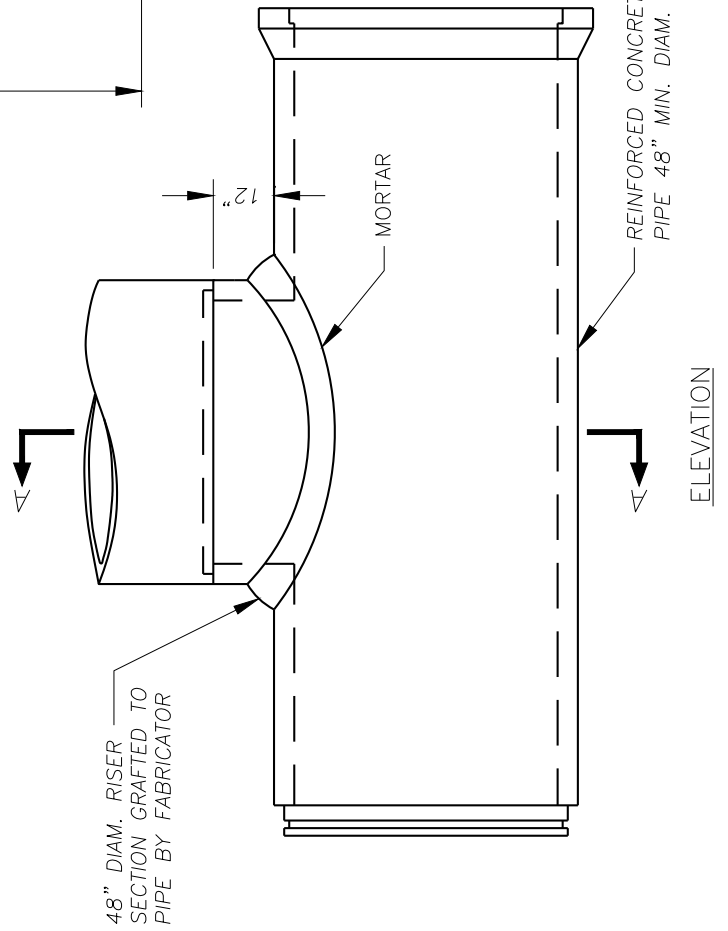
01/07/16
 DATE

| | | | |
|-----|-----------|------|----|
| NO. | REVISIONS | DATE | BY |
| | | | |
| | | | |

STANDARD
D1.4
 DETAIL
 DESIGNED
 DRAWN
 DATE 01/30/15



SECTION A-A



ELEVATION