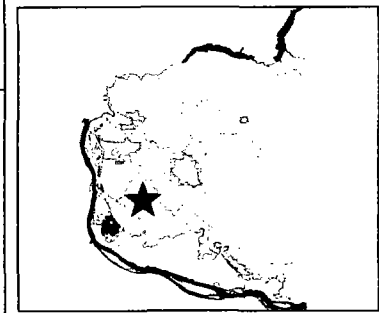
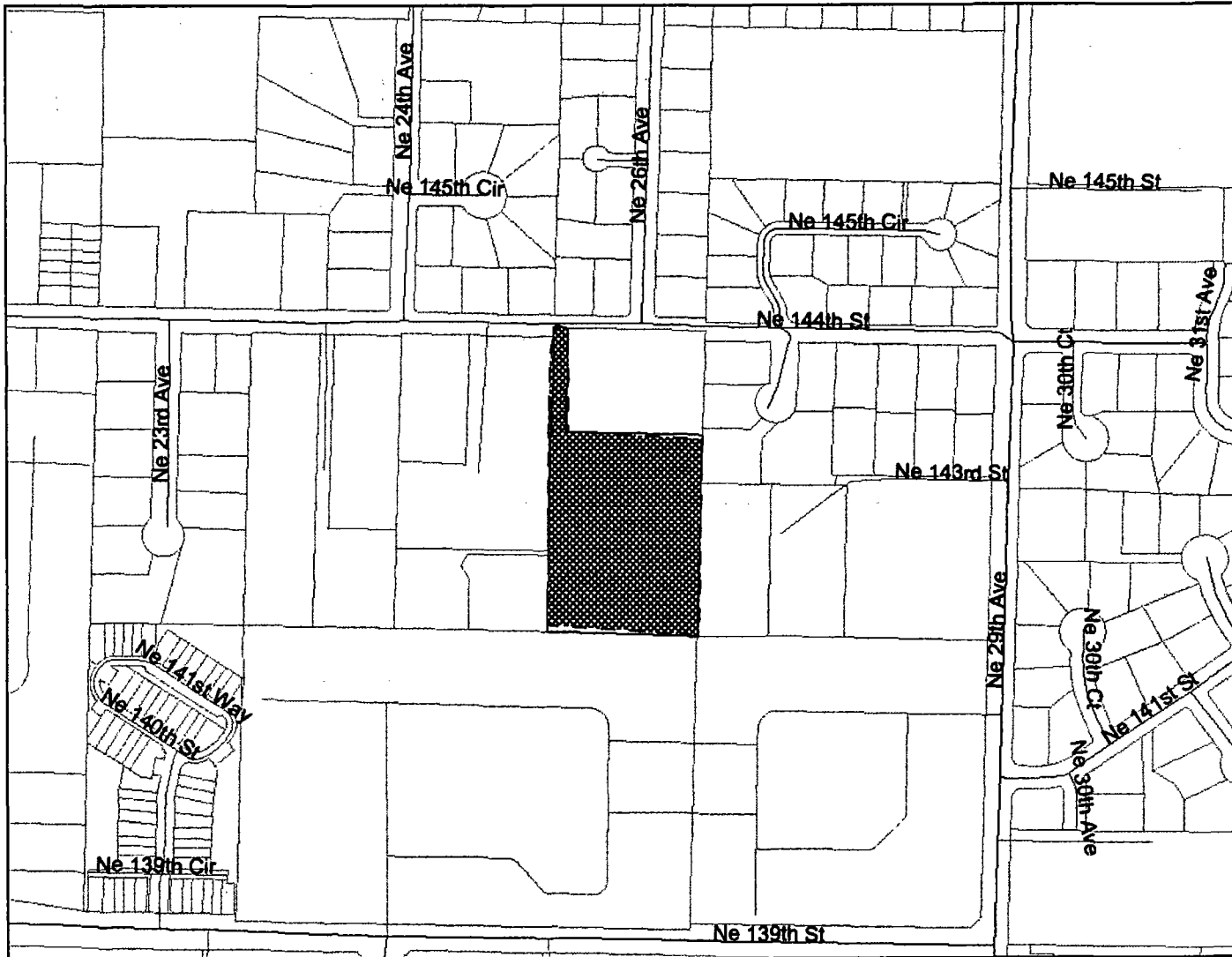


ATTACHMENT A: MOUNT VISTA HEIGHTS



Legend

- Parcels
- Roads**
- Alley
- Arterial
- DNR
- DNR (Private Land)
- Driveway
- Interstate
- Interstate Ramp
- Primary Arterial
- Private Roads
- Private Roads w/o Names
- Public Roads
- SR Ramp
- State Route
- Waterbodies
- Rural Centers
- City Boundaries
- Urban Growth Boundaries
- County Boundary

0 425 850 1275 ft.

Map center: 1092818, 150123



Scale: 1:4,398

This map was generated by Clark County's "Maps Online" website. Clark County does not warrant the accuracy, reliability or timeliness of any information on this map, and shall not be held liable for losses caused by using this information.