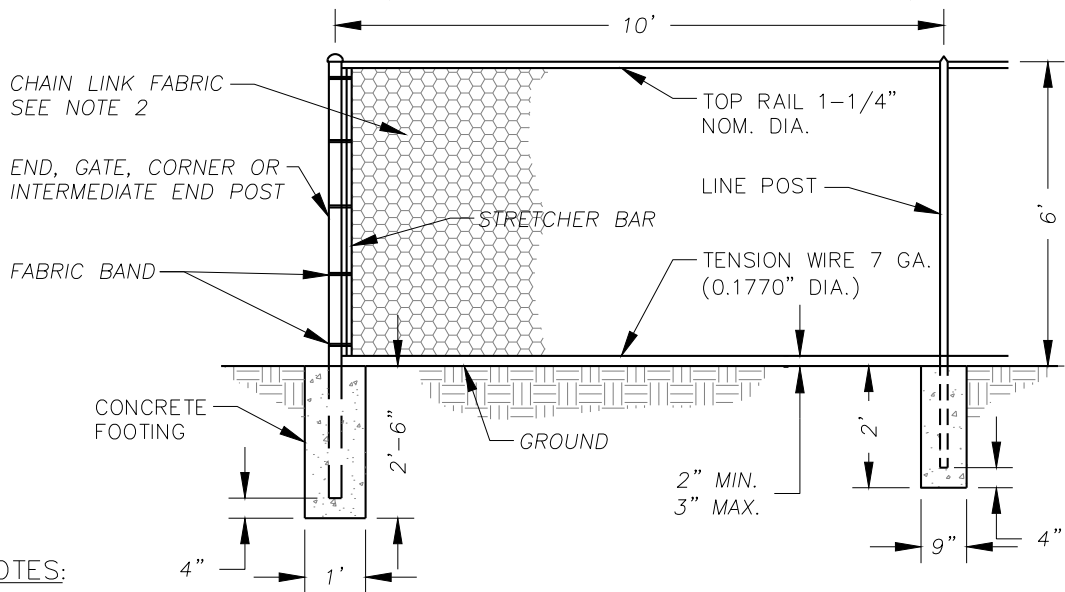


NOT ALLOWED ADJACENT / ALONG ANY STREET, ONLY OFF-SITE FACILITY LOCATION CAN HAVE TOP RAIL.



NOTES:

1. ALL MATERIAL AND WORKMANSHIP SHALL BE IN ACCORDANCE WITH THE CURRENT STATE OF WASHINGTON STANDARD SPECIFICATIONS FOR ROAD, BRIDGE, AND MUNICIPAL CONSTRUCTION.
2. CHAIN LINK FENCE FABRIC TO MEET OR EXCEED REQUIREMENTS OF WSDOT STANDARD SPECIFICATIONS 9-16.1(1)B FOR TYPE 1 FENCE (9 GA) 2" DIAMOND. CHAIN LINK FENCE FABRIC SHALL BE HOT DIP GALVANIZED WITH A MINIMUM OF 0.8 OUNCE PER SQUARE FOOT OF SURFACE AREA. FENCING MATERIALS SHALL BE COATED WITH AN ULTRAVIOLET INSENSITIVE PLASTIC OR OTHER INERT MATERIAL AT LEAST 2 MILS IN THICKNESS. ANY PRETREATED OR COATING SHALL BE APPLIED IN ACCORDANCE WITH THE MANUFACTURER'S WRITTEN INSTRUCTIONS. THE MANUFACTURER'S WRITTEN SPECIFICATIONS DETAILING THE PRODUCT AND METHOD OF FABRICATION SHALL BE PROVIDED TO CLARK COUNTY PRIOR TO CONSTRUCTION. THE COLOR SHALL BE BLACK.

NO.	REVISIONS	DATE	BY

DWG: D26.DWG



Department of
Public Works
CLARK COUNTY
WASHINGTON
proud past, promising future

CHAIN LINK FENCE FOR
STORMWATER FACILITY

APPROVED
[Signature]
COUNTY ENGINEER

01/07/16
DATE

STANDARD
D26
DETAIL
DESIGNED
DRAWN
DATE 01/30/15