

C-TRAN

Project Update

April 23, 2024
Clark County BPAC



« OUR COMMUNITY, OUR PROMISE »

Overview

- What is The Vine?
- Bikes on The Vine
- The Vine Red Line (Mill Plain)
- Highway 99 Bus Rapid Transit Project
- Fourth Plain Bus Rapid Transit Extension Project
- C-TRAN 2045
- Bikes on Buses



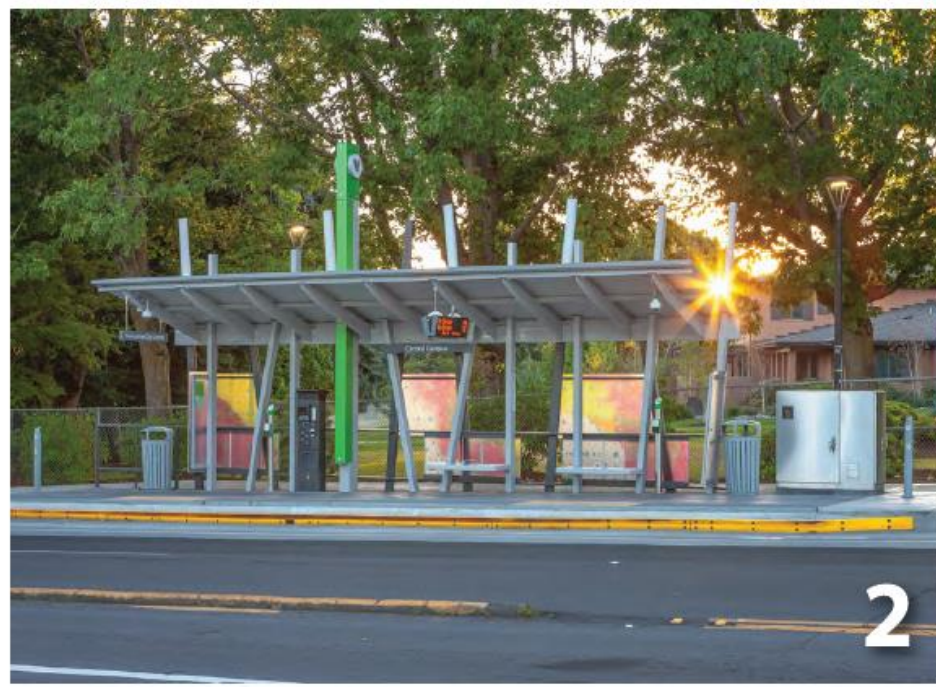
« C-TRAN: OUR COMMUNITY, OUR PROMISE »

What is The Vine?



1 Multimodal Design

The Fourth Plain BRT Extension will integrate multimodal station design. Bike bypass station design will integrate universal accessibility, reducing conflict points for road users.



2 Recognizable Station Features

The stations will have recognizable branding and architecture, including covered waiting areas, real time arrival information, seating, windscreens, ticket vending machines, lighting, and trash cans.



3 Accessible Platform Design

Level boarding through all doors will make stops efficient and accessible for people walking, rolling, or bringing bikes onboard.



4 High Capacity Vehicles


Vine branded zero emission high-capacity 60-foot articulated buses will make the service recognizable. Low-floor boarding, onboard bike racks and other new features will make rides comfortable and smooth.

C-TRAN Bus Rapid Transit

THE VINE System Expansion

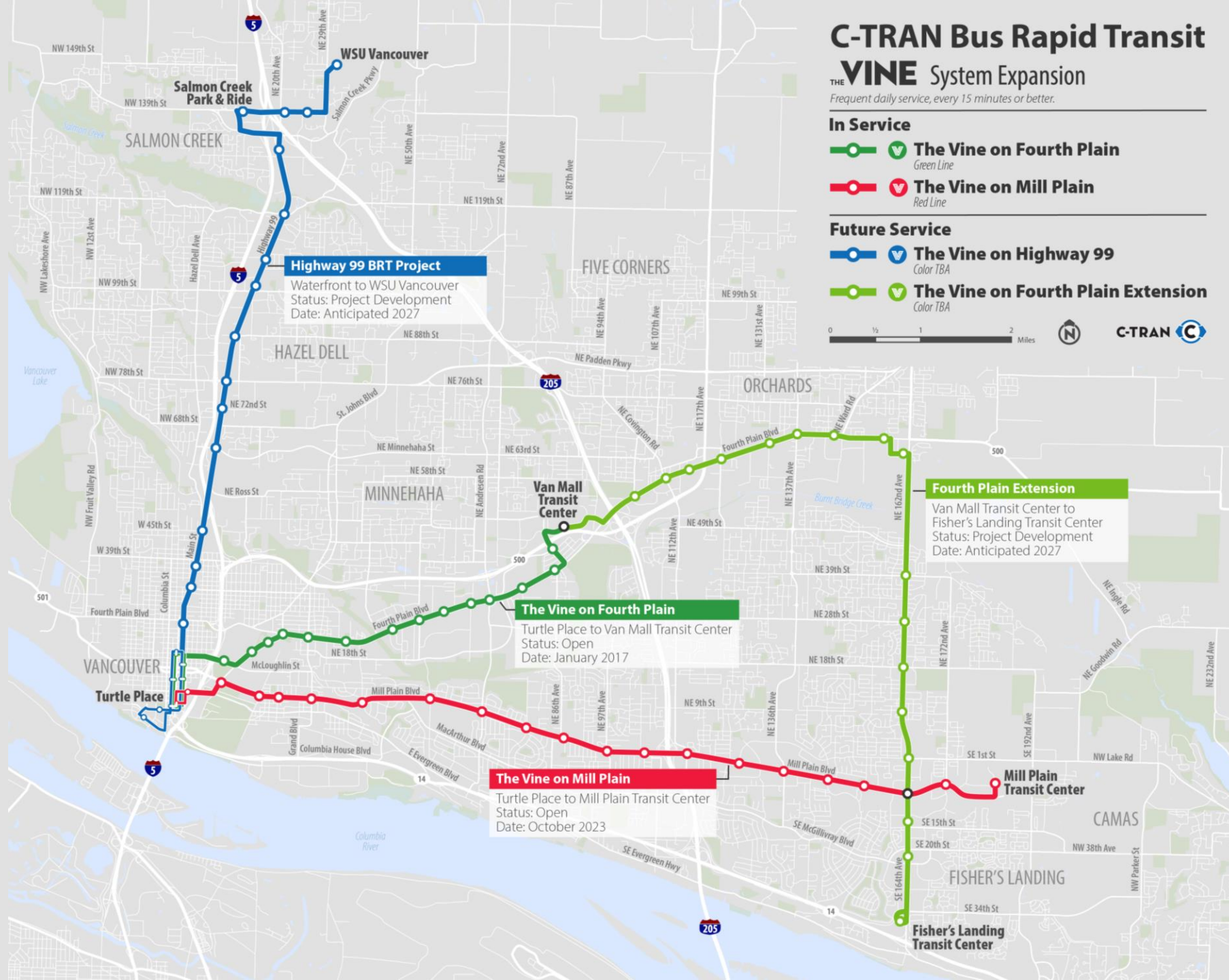
Frequent daily service, every 15 minutes or better.

In Service

-   **The Vine on Fourth Plain**
Green Line
-   **The Vine on Mill Plain**
Red Line

Future Service

-   **The Vine on Highway 99**
Color TBA
-   **The Vine on Fourth Plain Extension**
Color TBA



Highway 99 BRT Project

Waterfront to WSU Vancouver
Status: Project Development
Date: Anticipated 2027

Fourth Plain Extension

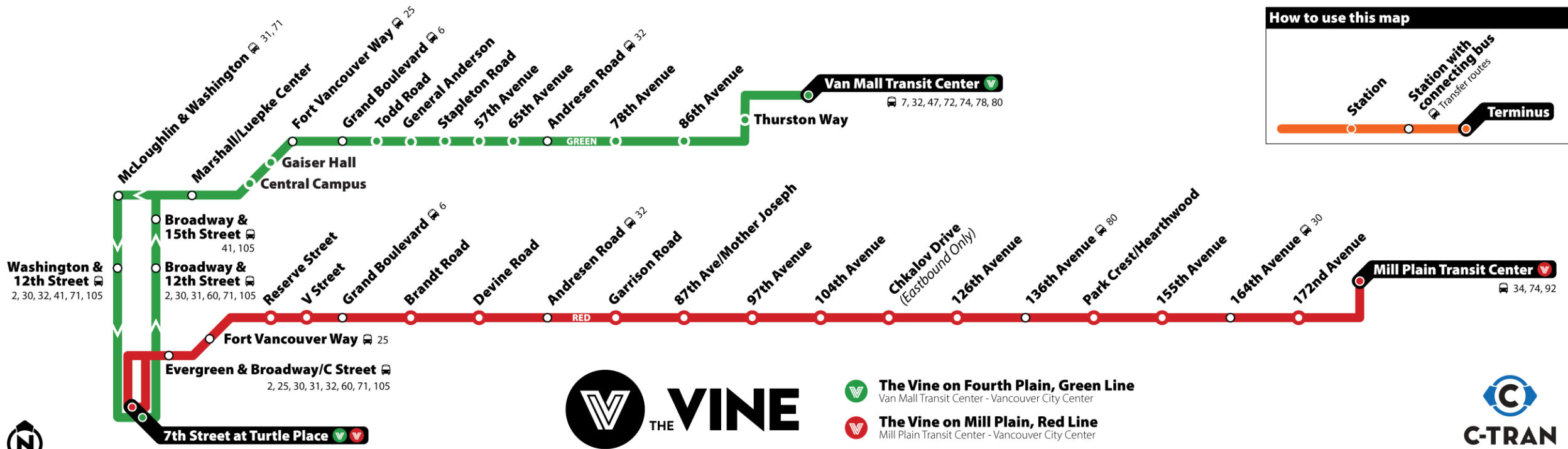
Van Mall Transit Center to Fisher's Landing Transit Center
Status: Project Development
Date: Anticipated 2027

The Vine on Fourth Plain

Turtle Place to Van Mall Transit Center
Status: Open
Date: January 2017

The Vine on Mill Plain

Turtle Place to Mill Plain Transit Center
Status: Open
Date: October 2023



How to use this map

- Station:** Represented by a white circle on the line.
- Station with connecting bus:** Represented by a white circle with a bus icon and 'Transfer routes' text.
- Terminus:** Represented by a red circle with a white dot in the center.

Not to Scale



- The Vine on Fourth Plain, Green Line**
Van Mall Transit Center - Vancouver City Center
- The Vine on Mill Plain, Red Line**
Mill Plain Transit Center - Vancouver City Center



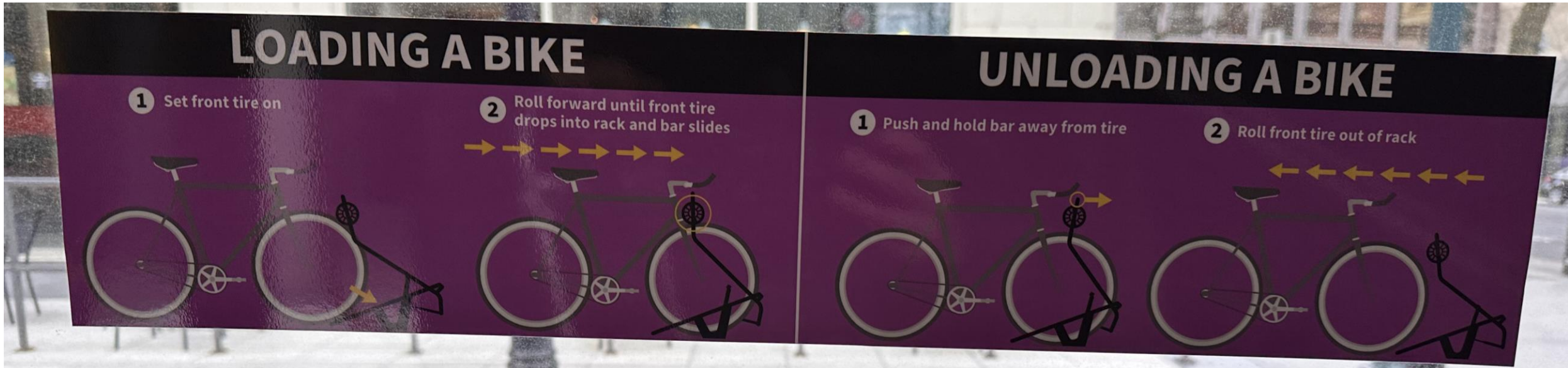
« C-TRAN: OUR COMMUNITY, OUR PROMISE »

Bicycles on The Vine



How to Ride

This Vine is different than most C-TRAN buses



« C-TRAN: OUR COMMUNITY, OUR PROMISE »

Local Bus

1. Squeeze the handle on the top of the rack and lower it.
2. Place your bike in the rack
3. Place the bar over your front wheel (as close to the frame as possible).
4. Remove any loose items or valuables from your bike, including panniers
5. Then board the bus!
6. Don't forget to take your bike when you leave
7. When you remove your bike, return the rack to the upright position



« C-TRAN: OUR COMMUNITY, OUR PROMISE »

The Vine Red Line



« C-TRAN: OUR COMMUNITY, OUR PROMISE »

Bike Bypass Station Design



« C-TRAN: OUR COMMUNITY, OUR PROMISE »

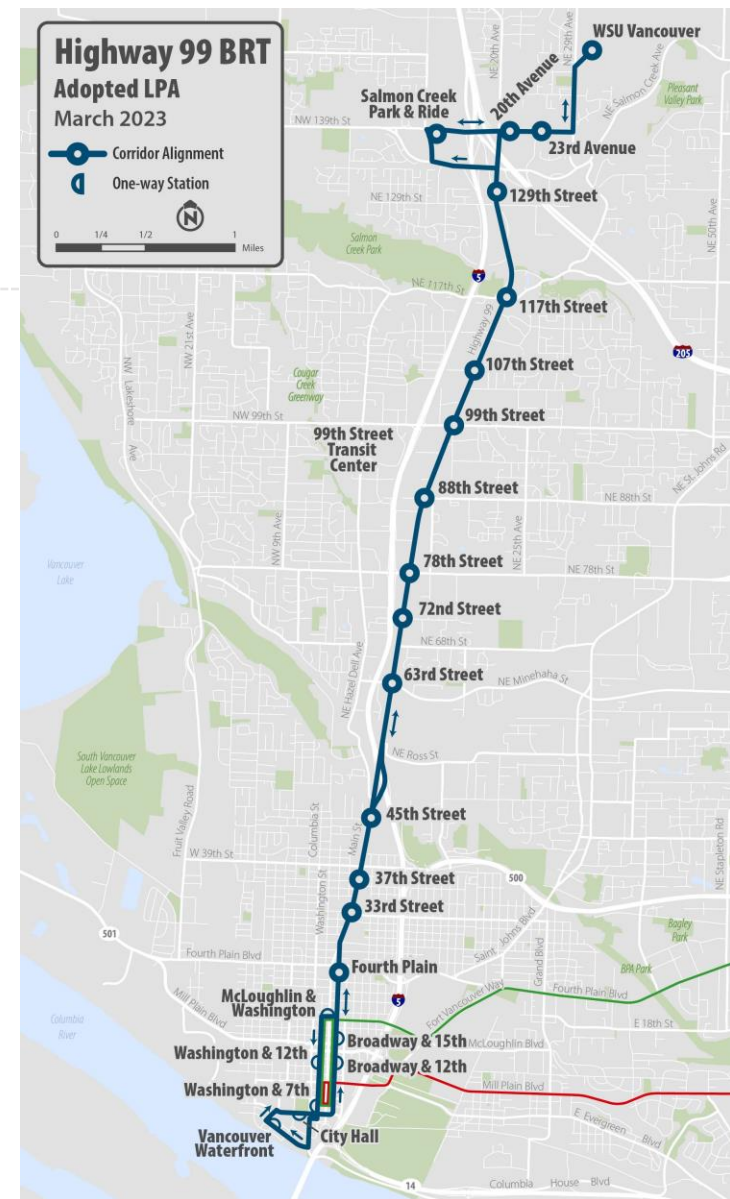
Bike Bypass, Continued



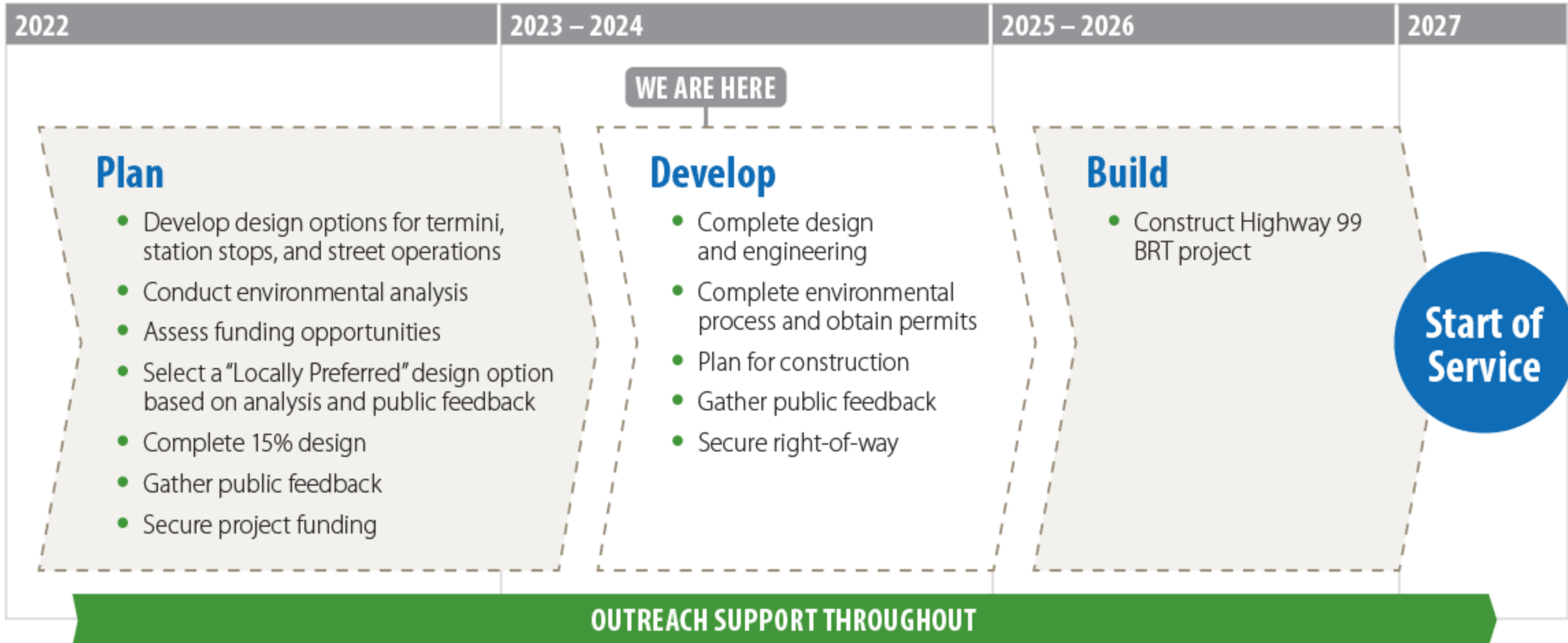
« C-TRAN: OUR COMMUNITY, OUR PROMISE »

The Vine on Highway 99

- **Alignment:** Highway 99/Main Street
- **Length:** 10 miles
- **Northern Terminus:** WSU Vancouver
- **Southern Terminus:** Vancouver Waterfront
- **Stations:** 33 new stations, 4 existing, & improvements at Salmon Creek
- **Travel Time Estimate:** Approximately 33 minutes each way



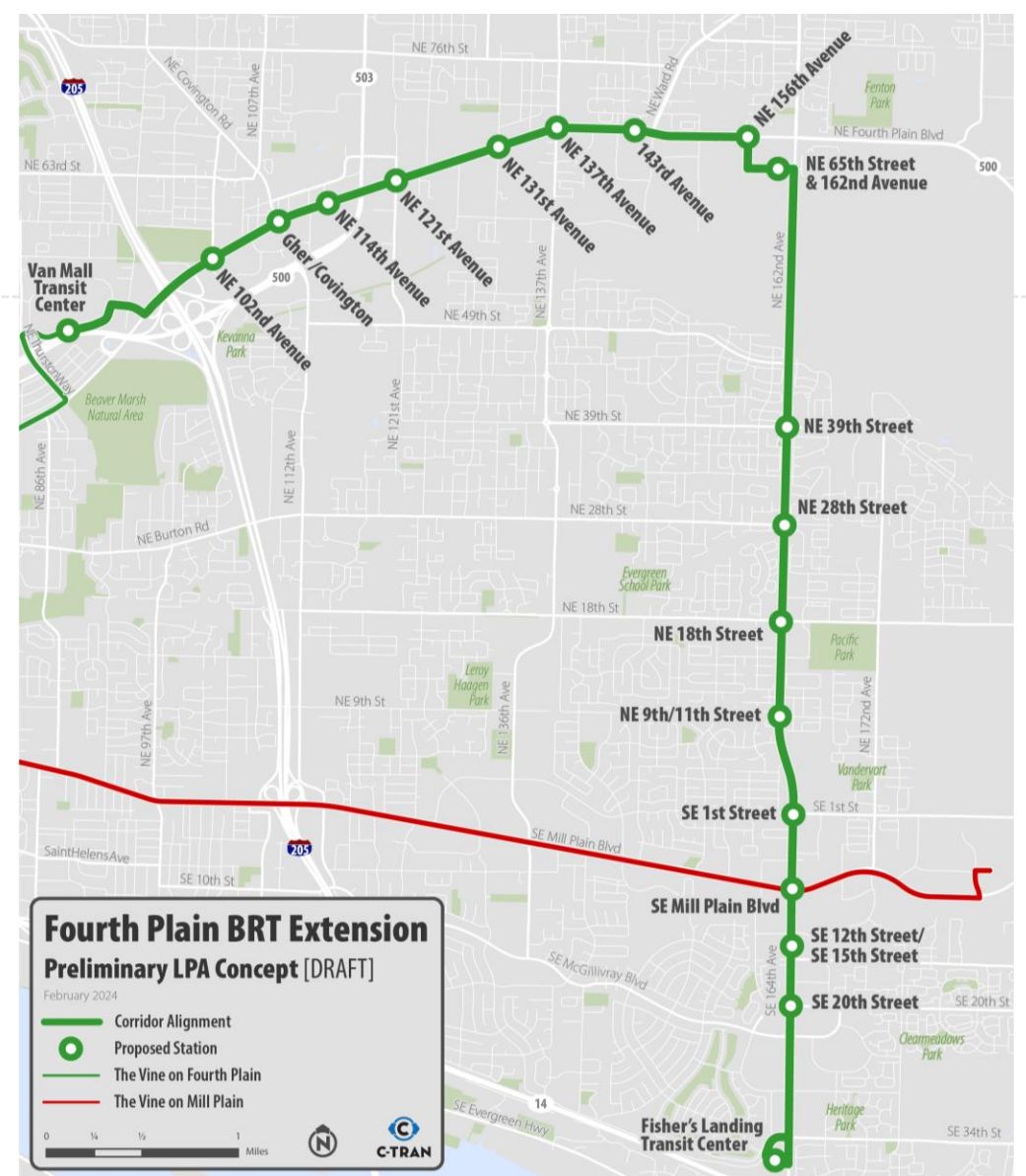
« C-TRAN: OUR COMMUNITY, OUR PROMISE »



« C-TRAN: OUR COMMUNITY, OUR PROMISE »

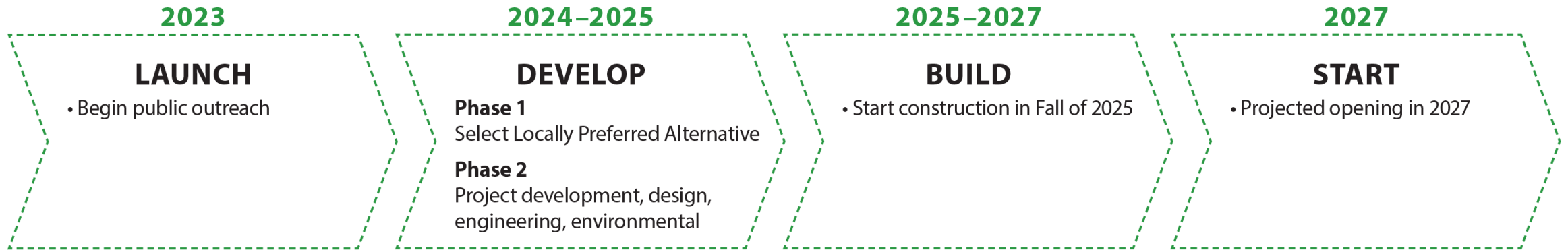
The Vine on Fourth Plain Extension

- **Alignment:** Fourth Plain & 162nd Avenue/164th Avenue
- **Length:** 9 miles
- **Northern Terminus:** Van Mall Transit Center
- **Southern Terminus:** Fisher's Landing Transit Center
- **Stations:** 34 new stations, BRT modifications at Fisher's Landing, Van Mall TC
- **Travel Time Estimate:** Approximately 35 minutes each way
- Stations serve approx. 90% of existing ridership within 1 block



« C-TRAN: OUR COMMUNITY, OUR PROMISE »

Timeline



« C-TRAN: OUR COMMUNITY, OUR PROMISE »

C-TRAN's Long-Range Transit Plan (LRTP) is a planning tool that guides C-TRAN over a 20-year timeframe.

Improving service

Identifying Capital Project Needs

Ensuring transit equity

Maintaining financial sustainability

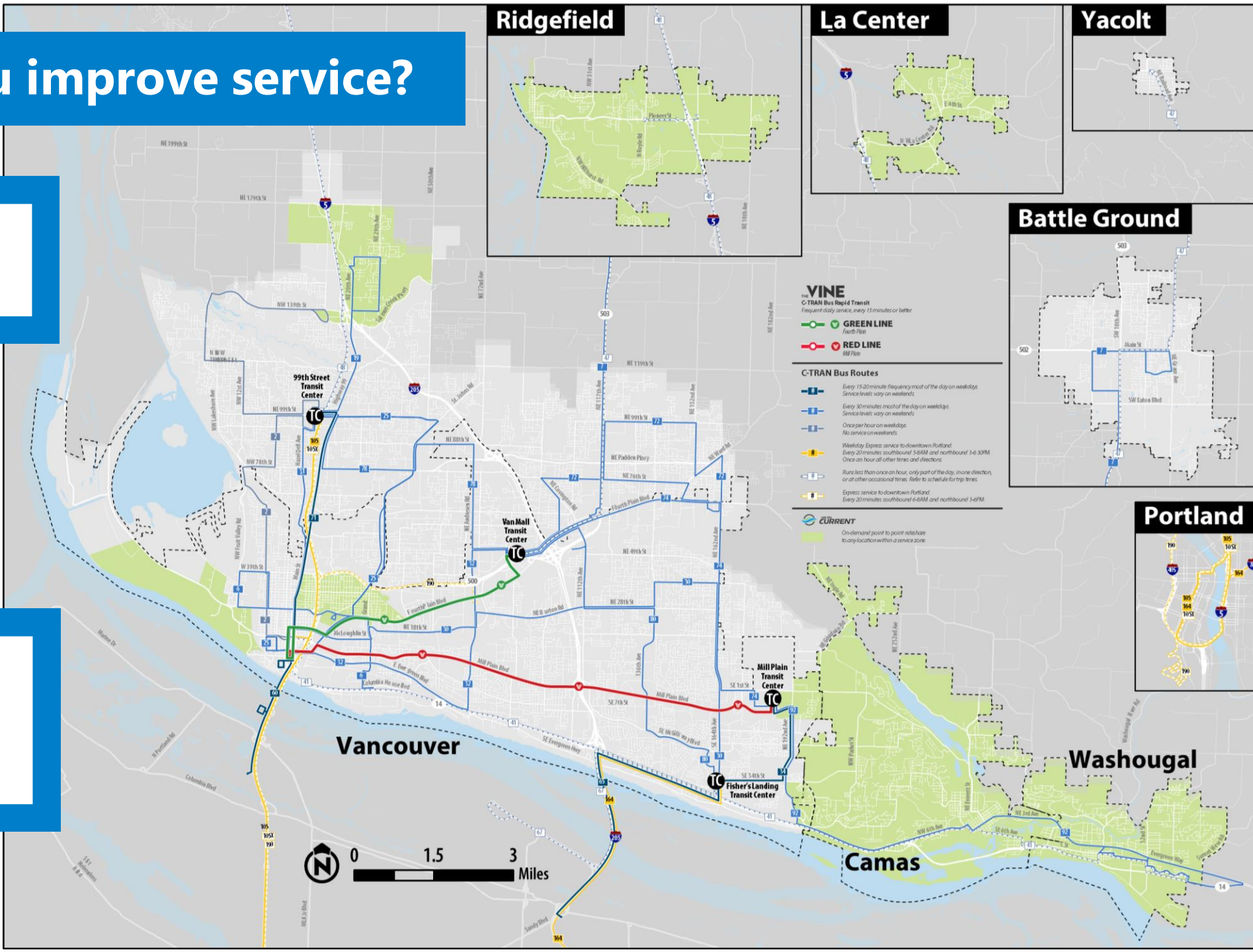
Supporting grant efforts



Where would you improve service?

Where can the system be improved?

Where would you like to go using public transit, that you can't today?



How would you improve service?

What is most important to you?

Increase transit ridership

Make transit faster and more reliable

Increase the number of people who can easily access transit

Improved the experience of people riding transit

How do we get there?

When improving existing bus routes, we should focus on...



Routes used by the most people



Routes that run less frequently



More frequent weekday service



More frequent weekend service



Later service on weekdays



Later or earlier service on weekends



Routes that do not have service on weekends



More trips on The Current

Service options to Portland

When adding new service, we should focus on...



Expanding coverage to new neighborhoods



Adding service to existing neighborhoods that are growing



Highway-based regional connections



Point-to-point trips with The Current



New types of service we don't provide today

When improving the rider experience, we should focus on...



Improved bus stop accessibility and amenities



Corridor-based infrastructure improvements (e.g. The Vine)



Streamlined rider communications

Something else?

Next Steps

• Visit our online virtual open house at

www.c-tran.com/c-tran2045

E-mail us anytime: 2045@c-tran.com

C-TRAN is listening to community voices to plan safe, reliable, and effective transit solutions. The planning process is full of opportunities to comment on the future of C-TRAN service. Help us shape public transportation in Clark County.

Timeline

Winter 2023/24

ANALYZE

- Existing & Future Conditions Analysis

ENGAGE

- Rider Need & Preferences Engagement

Spring 2024

DEVELOP

- Service Concept & Capital Project Development
- Implementation Scenario Planning

Summer/Fall 2024

ADOPT

- Community Priorities Engagement
- Plan Development Adoption



« C-TRAN: OUR COMMUNITY, OUR PROMISE »

Thank you!



« C-TRAN: OUR COMMUNITY, OUR PROMISE »