





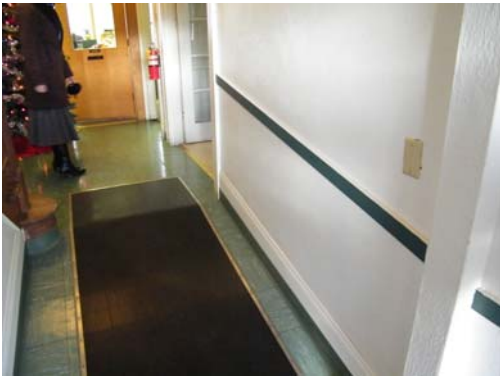
# ADA Compliance Program

## Clark County Facilities Accessibility Survey Heritage Farms - 78<sup>th</sup> Street

Date of Survey: December 22, 2008  
 Conducted by: Dan Spencer, Laura Pederson, Tim McVicker

|  |  |
|--|--|
|  | <p>Item # 1</p> <p>Issue: No Accessible Parking</p> <p>Issue:</p> <p>Location: South Parking Lot</p> <p>Code: ANSI 501 General</p> <p>ANSI 501.1 Scope - General site and building elements required to be accessible by the scoping provisions adopted by the administrative authority shall comply with the applicable provisions of Chapter 5.</p> <p>ANSI 502 Parking Spaces</p> <p>ANSI 502.1 General. Accessible car and van parking spaces shall comply with Section 502.</p> <p>Notes: Accessible parking stalls must be constructed pursuant to ANSI Chapter 5</p>  |
|  | <p>Item # 2</p> <p>Issue: Handrail Improvements Needed</p> <p>Issue: Wheelchair Ramp Needed</p> <p>Location: South Entrance - Lower stair case</p> <p>Code: IBC 1104.2 Within a site. At least one accessible route shall connect accessible buildings, accessible facilities, accessible elements and accessible spaces that are on the same site.</p> <p>ANSI 505 Handrails</p> <p>ANSI 505.1 General - Handrails required by Section 405.8 for ramps, or Section 504.6 for Stairs, shall comply with Section 505.</p> <p>ANSI 505.2 Location - Handrails shall be provided on both sides of stairs and ramps.</p> <p>Notes: Wheelchair ramp to be constructed on West</p> |

|  |  |
|--|--|
|  | <p>side of building<br/>Minimum of 60% of entrances must be accessible</p>   |
|    | <p>Item # 3</p> <p>Issue: Handrail Improvements Needed</p> <p>Issue: Wheelchair Ramp Needed</p> <p>Location: South Entrance - Upper stair case</p> <p>Code: IBC 1104.2 Within a site. At least one accessible route shall connect accessible buildings, accessible facilities, accessible elements and accessible spaces that are on the same site.</p> <p>ANSI 505 Handrails</p> <p>ANSI 505.1 General - Handrails required by Section 405.8 for ramps, or Section 504.6 for Stairs, shall comply with Section 505.</p> <p>ANSI 505.2 Location - Handrails shall be provided on both sides of stairs and ramps.</p> <p>Notes: Wheelchair ramp to be constructed on West side of building</p> <p>Minimum of 60% of entrances must be accessible</p>                                      |
|  | <p>Item # 4</p> <p>Issue: Handrail Improvements Needed</p> <p>Issue: Wheelchair Ramp Needed</p> <p>Location: East Entrance</p> <p>Code: IBC 1104.2 Within a site. At least one accessible route shall connect accessible buildings, accessible facilities, accessible elements and accessible spaces that are on the same site.</p> <p>ANSI 505 Handrails</p> <p>ANSI 505.1 General - Handrails required by Section 405.8 for ramps, or Section 504.6 for Stairs, shall comply with Section 505.</p> <p>ANSI 505.2 Location - Handrails shall be provided on both sides of stairs and ramps.</p> <p>Notes: <ul style="list-style-type: none"> <li>• Wheelchair ramp to be constructed on West side of building</li> <li>• Minimum of 60% of entrances must be accessible</li> </ul> </p> |



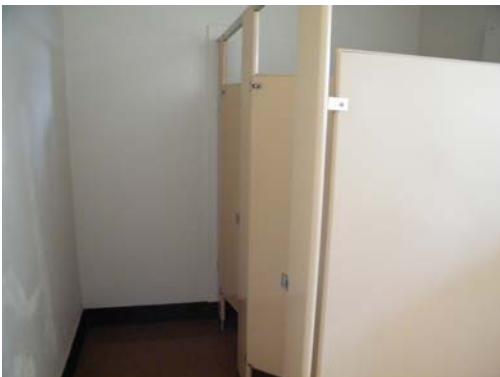
Item # 5  
Issue: Handrails Required  
Issue:  
Location: Ramp Interior South Entrance  
Code: ANSI 505 Handrails  
ANSI 505.1 General - Handrails required by Section 405.8 for ramps, or Section 504.6 for Stairs, shall comply with Section 505.  
ANSI 505.2 Location - Handrails shall be provided on both sides of stairs and ramps.

Notes:



Item # 6  
Issue: Pipe Cover  
Issue: Mirror Height  
Location: Men's Restroom  
Code: ANSI 606.6 Exposed Pipes and Surfaces – Water supply drainpipes under lavatories and sinks shall be insulated or otherwise configured to protect against contact. There shall be no sharp or abrasive surfaces under lavatories and sinks.  
ANSI 1003.11.6 Mirrors - Mirrors above lavatories shall have the bottom edge of the reflecting surface 40 inches (1015 mm) maximum above the floor.

Notes: Complete renovation of restrooms should be explored pursuant to ANSI Chapter 6 and IBC



Item # 7  
Issue: Accessible Restroom Stalls Required  
Issue:  
Location: Men's Restroom  
Code: ANSI Chapter 6 Plumbing Elements and Facilities  
Notes: Complete renovation of restrooms should be explored pursuant to ANSI Chapter 6 and IBC



Item # 8  
Issue: Threshold transition is excessive in height.  
Issue:  
Location: Men's Restroom  
Code: ANSI 303.1 General. Changes in level in floor surfaces shall comply with Section 303.  
ANSI 303.2 Vertical. Changes in level of ¼ inch (6.4 mm) maximum in height shall be permitted to be vertical.  
Notes: Complete renovation of restrooms should be explored pursuant to ANSI Chapter 6 and IBC



Item # 9  
Issue: Inaccessible Restroom  
Issue:  
Location: Women's Restroom  
Code: ANSI Chapter 6 Plumbing Elements and Facilities  
Notes: Complete renovation of restrooms should be explored pursuant to ANSI Chapter 6 and IBC



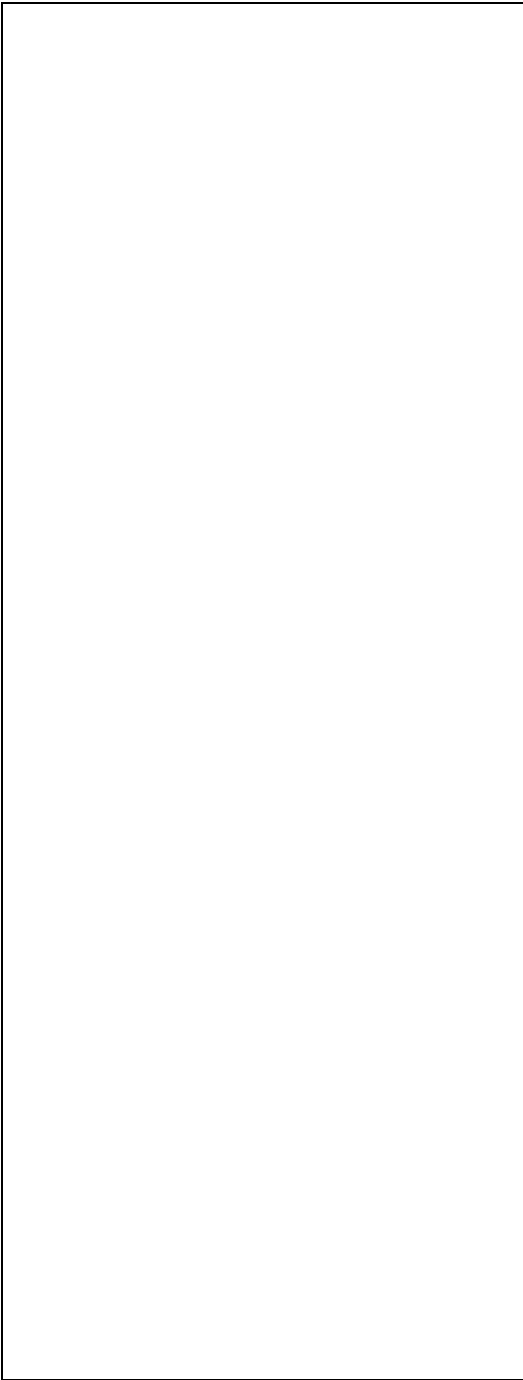
Item # 10  
Issue: Entrance is Not Wheelchair Accessible  
Issue:  
Location: Women's Restroom  
Code: ANSI Chapter 6 Plumbing Elements and Facilities  
Notes: Complete renovation of restrooms should be explored pursuant to ANSI Chapter 6 and IBC



Item # 11  
Issue: Asbestos Abatement  
Issue: Lead paint Abatement  
Location: Throughout Building  
Code:  
Notes:

- Conduct survey and testing for asbestos in pipe covers and floor tile.
- Conduct survey and testing for Lead paint

|  |   |
|--|---|
| <p>Community Gardens<br/>No Photo</p>    | <p>Item # 12</p> <p>Issue: Accessible Community Gardens</p> <p>Issue: Access Pathways to Garden Area</p> <p>Issue: Van accessible parking</p> <p>Location: Community Gardens parking</p> <p>Code: IBC 1104.2 Within a site. At least one accessible route shall connect accessible buildings, accessible facilities, accessible elements and accessible spaces that are on the same site.</p> <p>ANSI 501 General</p> <p>ANSI 501.1 Scope - General site and building elements required to be accessible by the scoping provisions adopted by the administrative authority shall comply with the applicable provisions of Chapter 5.</p> <p>ANSI 502 Parking Spaces</p> <p>ANSI 502.1 General. Accessible car and van parking spaces shall comply with Section 502.</p> <p>Notes:</p>   |
| <p>Classroom Facilities<br/>No Photo</p> | <p>Item # 13</p> <p>Issue: Classroom Accessibility and Element Use</p> <p>Issue: Signage</p> <p>Issue: Areas of Refuge</p> <p>Issue: Operable Parts – Door hardware</p> <p>Location: Throughout Facility</p> <p>Code: IBC 1104.2 Within a site. At least one accessible route shall connect accessible buildings, accessible facilities, accessible elements and accessible spaces that are on the same site.</p> <p>ANSI 501 General</p> <p>ANSI 501.1 Scope - General site and building elements required to be accessible by the scoping provisions adopted by the administrative authority shall comply with the applicable provisions of Chapter 5.</p> <p>IBC 1110.2 Directional Signage – Directional signage indicating the route to the nearest like accessible element shall be provided. These directional signs shall include the</p> |



International Symbol of Accessibility at exits and elevators serving a required accessible space, but not providing an approved accessible means of egress; signage shall be provided in accordance with IBC Section 1007.7.

ANSI Operable Parts

ANSI 309.4 Operation - Operable parts shall be operable with one hand and shall not require tight grasping, pinching, or twisting of the wrist. The force required to activate operable parts shall be 5.0 pounds (22.2 N) maximum.

ANSI 404.2.6 Door Hardware - Handles, pulls, latches, locks, and other operable parts on accessible doors shall have a shape that is easy to grasp with one hand and does not require tight grasping, pinching, or twisting of the wrist to operate. Operable parts of such hardware shall be 34 inches (865 mm) minimum and 48 inches (1220 mm) maximum above the floor.

Note:

- Renovation of classroom facilities within the main building will need to be reviewed for accessibility to include acquisition of tables that meet ANSI code for accessibility.
- Signage within the facility will need to be examined to ensure compliance with ANSI Chapter 7 – Communications
- Areas of refuge may need to be clearly identified and signed pursuant to IBC 1110.2
- Door handles and operable parts will need to be acquired where necessary

Item # 14

Issue: Directional Signs Required

Issue:

Location: Exterior Entrances as Required

Code: ANSI 1110.2 - Directional Signage

Directional signage indicating the route to the nearest like accessible element shall be provided at the following locations. These directional signs shall include the

International Symbol of Accessibility:

Inaccessible building entrances

Sign Sample: Signs must meet ANSI Chapter 7 Communication Elements and Features

Recommendation - Erect sign at east entrances giving directions to accessible entrance on West side of building.

Notes:

Accessible elements shall be identified by the International Symbol of Accessibility and all non-accessible entrances shall have signs indicating the location of the closet accessible entrance.