

HEADS UP!



JUNE 2013

A Message From Clark County About a Project in the Parkside Neighborhood

Grant funding:



CONSTRUCTION IN WHIPPLE CREEK GREENWAY AT NE 4TH AVE. AND NE 146TH ST.

Stormwater Facility Renovation

Clark County Public Works and Environmental Services will expand and reconfigure existing stormwater facilities to better manage polluted stormwater runoff from roads, roofs and other hard surfaces in the Parkside neighborhood.

Federal, state and local laws require the county to collect and treat polluted runoff to protect the environment. Without proper stormwater management, runoff picks up oil, fertilizers, pesticides, pet waste and other contaminants and carries that pollution into streams and waterways, where it can harm fish and other aquatic life.

The project will expand and reconfigure three existing stormwater facilities to improve water quality treatment and reduce high flows from heavy rainstorms into a tributary of Whipple Creek. Heavy flows increase risk of erosion in the creek bed.

When construction is complete, the expanded facility will be up to 650 feet long (east/west) and 300 feet wide (north/south). The facility will be able to hold 2.157 million gallons, enough water to fill more than three Olympic-size pools.

WHAT TO EXPECT AND WHEN

- **Construction to begin in mid-June to early July**, depending on weather conditions, and wrap up in early fall. Plantings will occur over the winter months.
- **Work will be during daylight hours on weekdays**, although the contractor could work some evening and weekends, depending on scheduling.
- **Construction will require a substantial amount of earth moving and excavating**, including removal of some existing vegetation. Residents may notice a significant number of trucks heading to and from the construction site.



Stormwater facility at Parkside Manor north of Whipple Creek

Adjacent residents could experience a modest amount of dust, noise and vibration from construction. The contractor, Nutter Corp., will be required to have a community liaison to handle any problems that might arise.

Construction will be followed by planting more than 4,000 native plants over the winter months that will improve the appearance of the area, including 2-foot tall trees (half deciduous and half conifers), shrubs, rushes and sedges.

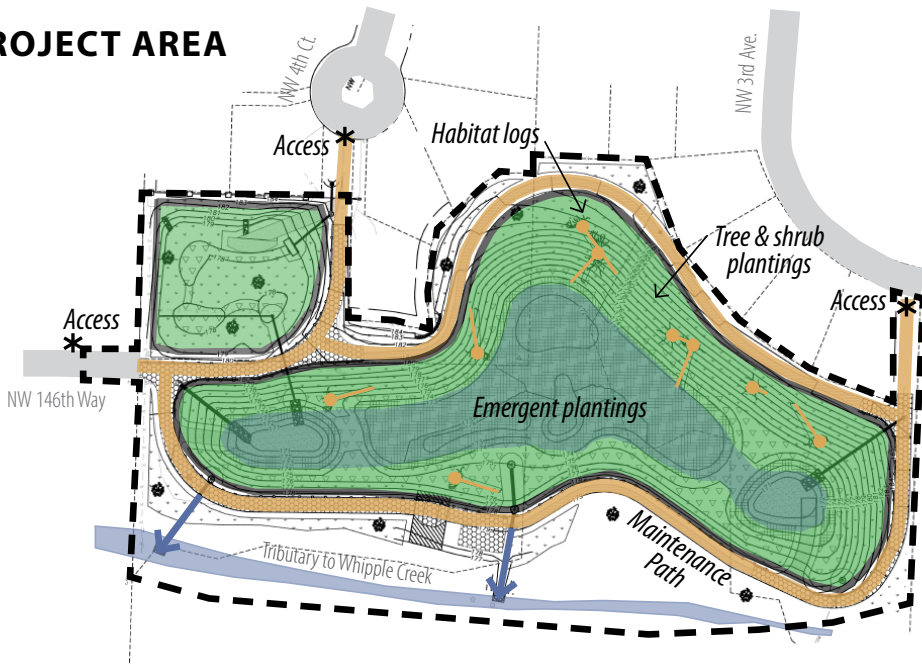
Construction workers will access the site using three different locations (see sketch). When construction is complete, these access points will be controlled with locked gates, although workers will periodically use the access points for routine maintenance and monitoring work.

FUNDING

This project is funded by a grant from the Washington State Department of Ecology and the Clean Water Fee paid by property owners in unincorporated Clark County. Construction costs are \$698,700.

Watershed Fact: Whipple Creek has been monitored for 10 years for overall quality and stream health. It ranked "poor" for overall quality and "low" in health (types of aquatic bugs) in 2012. Projects like this one aim to improve the health of the creek.

PROJECT AREA



Tips for a healthy home

ClarkGreenNeighbors.org



You can play a role in protecting Whipple Creek. Visit the Clark County Green Neighbors website to learn how to prevent stormwater pollution before it starts.

THIS FLIER CONTAINS IMPORTANT NEWS REGARDING A COUNTY PROJECT IN YOUR NEIGHBORHOOD

To Find Out More:

Scott Fakler, Project Manager
 (360) 397-6118 ext. 4394
 Scott.Fakler@clark.wa.gov
 www.clark.wa.gov/environment

CRP #401890



For other formats, contact the Clark County ADA Office: **Voice** (360) 397-2322; **Relay** 711 or (800) 833-6388; **Fax** (360) 397-6165; **E-mail** ADA@clark.wa.gov.

Clark County
 Department of Public Works
 PO Box 9810
 Vancouver, WA 98666-9810



PRESORTED
 STANDARD
 U.S. POSTAGE
 PAID
 VANCOUVER, WA
 PERMIT No. 132