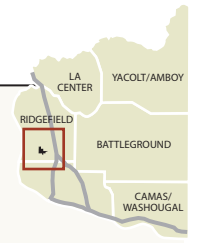


Whipple Creek Trail

5+ miles

EASY MODERATE

DIFFICULT



NW 179TH STREET, SOUTH ON
NW 21ST AVENUE, VANCOUVER

This large, undeveloped regional park is located immediately west of the Clark County Fairgrounds. Heavily forested with mature Douglas fir trees, you'll find over five miles of soft-surface trails, all of which are open to equestrian use.

DIRECTIONS
By car:
West of Clark County Fairgrounds on NW 179th Street, south on NW 21st Ave or NE 31st Ave to trailheads.

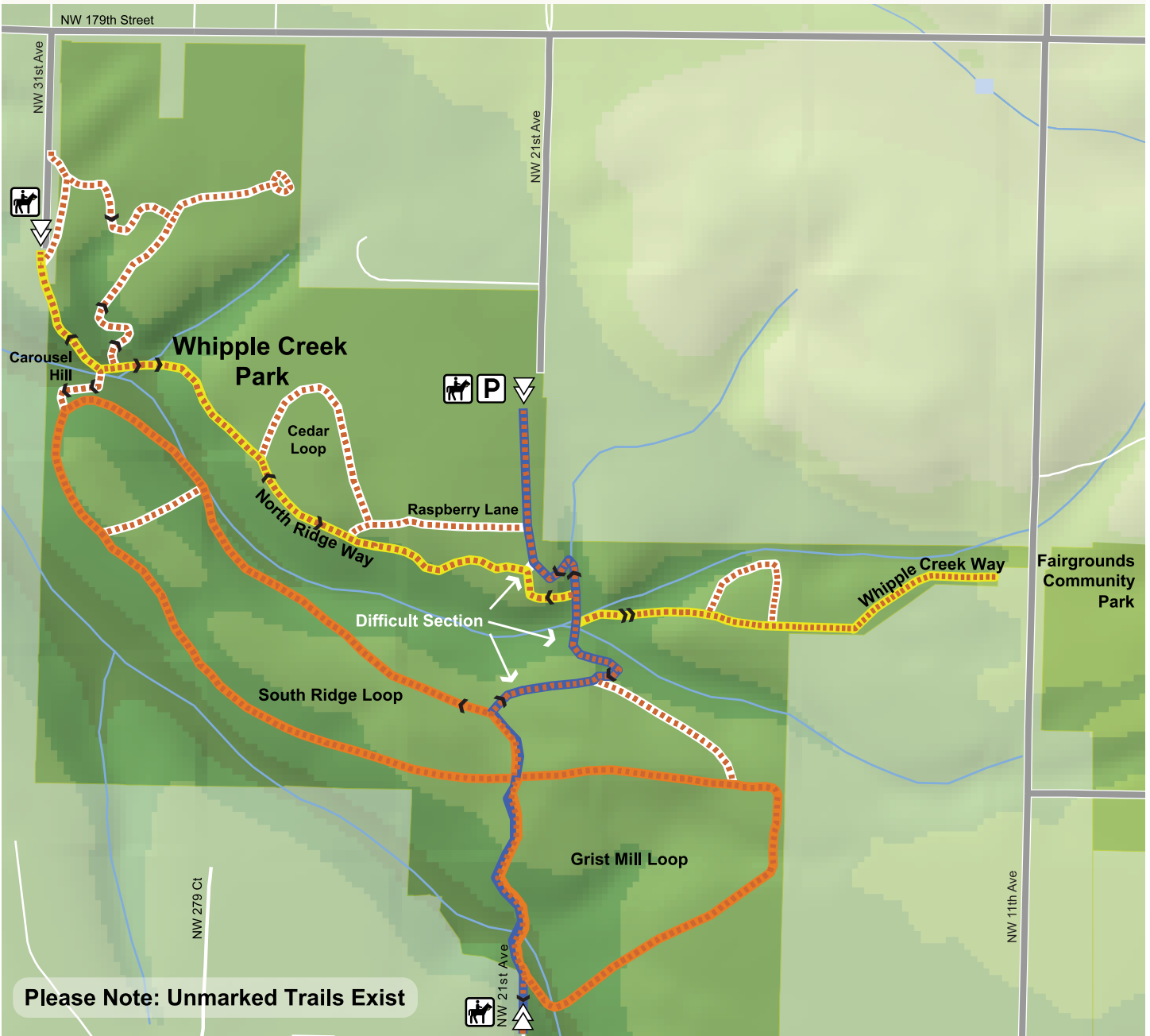
By bus:
None within 1 mile

FACILITIES
Equestrian trails

FEES
None

HOURS
7 a.m. to dusk

- BLUE TRAIL - .8 miles
- YELLOW TRAIL - 1.3 miles
- ORANGE CIRCUIT - 2.1 miles
- PARKING
- TRAIL ACCESS
- EQUESTRIAN ACCESS
- STEEP SLOPES



Please Note: Unmarked Trails Exist



CLARK COUNTY PUBLIC WORKS
PARKS DIVISION
www.clark.wa.gov/parks

