






ADA Compliance Program

Clark County Facilities Transition Plan Franklin Building

Date of Survey: July 10, 2006
 Conducted by: Clark County Citizen ADA Advisory Committee
 Wayne Yarnall Bud Van Cleve Teresa Guise (Absent)
 Connie Brittain Jesse Magana Tim McVicker

The Franklin Building, located at 1013 Franklin Street, currently houses the Clark County Prosecuting Attorney's Office. In most cases, public access and accommodations are limited to the reception area on the first floor. The restrooms are not available for use by the public.

	<p>Item # 1</p> <p>Issue: No Detectible Warnings</p> <p>Issue:</p> <p>Location: Pedestrian Crosswalks – 11th and Franklin</p> <p>Code: ANSI 406.1 General - Curb Ramps Curb ramps on accessible routes shall comply with Sections 406, 405.2, 405.3 and 405.10. IBC- Section 1102 Definitions – Detectable Warnings – A standardized surface feature built in or applied to walking surfaces or other elements to warn visually impaired persons of hazards on a circulation path. ANSI Code: 705.2 Standardization – Detectable warning surfaces shall be standard within a building, facility, site or complex of buildings ANSI 705.5 Truncated Domes – Detectable warning surfaces shall have truncated domes complying with Section 705.5 (See preceding photo and comments)</p> <p>Notes:</p>
	<p>Item # 2</p> <p>Issue: No Detectible Warnings</p> <p>Issue:</p> <p>Location: 11th and Franklin</p> <p>Code: ANSI 406.1 General - Curb Ramps Curb ramps on accessible routes shall comply with Sections 406, 405.2, 405.3 and 405.10. IBC- Section 1102 Definitions – Detectable Warnings – A standardized surface feature built in or applied to walking surfaces or other elements to warn visually impaired persons of hazards on a circulation path. ANSI Code: 705.2 Standardization – Detectable warning surfaces shall be standard within a building, facility, site or complex of buildings ANSI 705.5 Truncated Domes – Detectable warning</p>

	<p>surfaces shall have truncated domes complying with Section 705.5 (See preceding photo and comments)</p> <p>Notes:</p>
	<p>Item # 3</p> <p>Issue: Signage</p> <p>Issue:</p> <p>Location: West Entrance to Building</p> <p>Code: IBC 1110.2 - Directional Signage</p> <p>Directional signage indicating the route to the nearest like accessible element shall be provided at the following locations. These directional signs shall include the International Symbol of Accessibility:</p> <p>Inaccessible building entrances</p> <p>Sign Sample: Signs must meet ANSI Chapter 7 Communication Elements and Features</p> <p>Notes: West entrance is inaccessible. Signage is required with directions to nearest accessible entrance located on the south side of the building.</p> <p>There is signage on the west and north side of the building directing folks to the entrance which is located on the south side. However, individuals may mistakenly think that the entrance into the building is located on the east side of the building via the staircase shown in the photo to the left. There should be a sign posted at the top of the staircase directing individuals to continue to the south in order to enter the building.</p>



Item # 4

Issue: Van Accessible Parking

Issue:

Location: South Side of Building. Upper Parking Lot

Code: IBC 1106.5 Van Spaces – For every six or fraction of six accessible spaces, at least one shall be a van accessible space. There are no van accessible spaces on the south side of the Franklin Building. Access aisle and signage requirement must also be met.
 ANSI 502.2 Vehicle Space Size – Car parking spaces shall be 96 inches minimum in width. Van parking spaces shall be 132 inches minimum in width.
 Exception: Van parking spaces shall be permitted to be 96 inches minimum in width where the adjacent access aisle is 96 inches minimum in width.

Notes: Van accessible parking stalls must have an additional sign mounted below or as part of the overall sign that identifies the space as “van accessible”. Van Accessible Parking – One Van Space Required



Item # 5

Issue: Call Button Height

Issue:

Location: South Entrance to 1st Floor of Franklin Building

Code: Reach Range - The call button height is 53”
 ANSI 308.2 Forward Reach
 ANSI 308.3.1 Side Reach – Unobstructed
 Both of the noted ANSI requirements have a maximum high reach shall be 48 inches.

Notes:



Item # 6

Issue: Drinking Fountain– Protrusion Limits

Issue:

Location: First Floor of Franklin Building

Code: ANSI 307.2 Protrusion Limits. Objects with leading edges more than 27 inches and not more than 80 inches above the floor shall protrude 4 inches maximum horizontally into the circulation path. The drinking fountain shown protrudes significantly into the hallway and the height exceeds the 27 inch minimum.

The fountain should be recessed into an alcove or protected by cane detectible barriers.

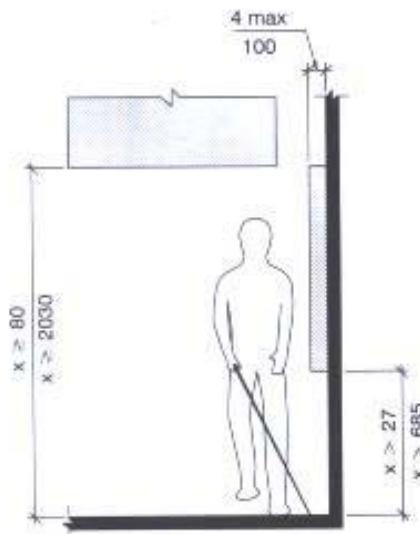
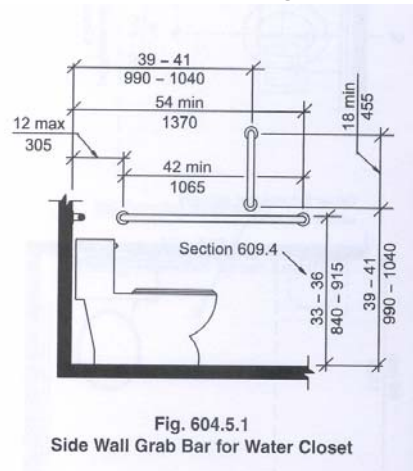


Fig. 307.2
Limits of Protruding Objects

Notes: Not a public access area



Item # 7
 Issue: Flush Handle Location
 Issue: Vertical Grab Bar
 Location: Women's Restroom – 1st Floor of Franklin Building and
 1st Floor Men's Restroom Accessible Stall
 Code: ANSI – Flush Controls – Hand operated flush controls shall be located on the open side of the water closet. ANSI A117.1-2003 Fig. 604.5.1



Notes: Not a Public Access Restroom (Unless employee is disabled)



Item # 8
 Issue: Toilet Paper Dispenser Location
 Issue:
 Location: Men's and Women's Restroom – 1st Floor of Franklin
 Code: ANSI 604.7 Dispensers – Toilet paper dispensers shall comply with Section 309.8.4 and shall be 7 inches minimum and 9 inches maximum in front of the water closet measured to the centerline of the dispenser. The outlet of the dispenser shall be 15 inches minimum and 48 inches maximum above the floor and shall not be located behind grab bars. ANSI 308.3.2 Reach range should be between 10" and 24".

Notes: Not a Public Access Restroom

No Photo	<p>Item # 9</p> <p>Issue: Door Opening Pressure</p> <p>Issue:</p> <p>Location: Men's and Women's Restroom – 1st Floor of Franklin</p> <p>Code: ANSI 404.2.8 Door-Opening Force – Interior hinged door: 5.0 pounds maximum</p> <p>Notes: Not a Public Access Restroom (Unless employee is disabled)</p> <p>Currently, door-opening forces are:</p> <ul style="list-style-type: none"> • Men's restroom 9 lbs. • Women's Restroom 10 pounds
No Photo	<p>Item # 10</p> <p>Issue: Exposed Pipes under Lavatories</p> <p>Issue:</p> <p>Location: Men's and Women's Restroom – 1st Floor of Franklin Building</p> <p>Code: ANSI 606.6 Exposed Pipes and Surfaces – Water supply drainpipes under lavatories and sinks shall be insulated or otherwise configured to protect against contact. There shall be no sharp or abrasive surfaces under lavatories and sinks.</p> <p>Notes: Not a Public Access Restroom (Unless employee is disabled)</p>



Item # 11
 Issue: Maneuvering Clearances
 Issue:
 Location: Reception Office – 1st Floor of Franklin Building
 Code: ANSI 404.2.2 Clear Width of Doorways

TYPE OF USE		MINIMUM MANEUVERING CLEARANCES	
Approach Direction	Door Side	Perpendicular to Door	Parallel to Doorway (beyond latch unless noted)
From front	Pull	60 inches	18 inches

Notes: Minimum Maneuvering Clearances
 The door clearance to the reception area is minimal.

Recommendations:
 Install an automatic power door
 Ensure that employee working in reception area opens door for individuals with disabilities if necessary.



Item # 12
 Issue: Operable Door Handle
 Issue:
 Location: Reception Office Lobby – 1st Floor of Franklin Building
 Code: ANSI 404.2.6 Door Hardware – Handles, pulls, latches, locks, and other operable parts on accessible doors shall have a shape that is easy to grasp with one hand and does not require tight grasping, pinching, or twisting of the wrist to operate.

Notes: