

Appendix J

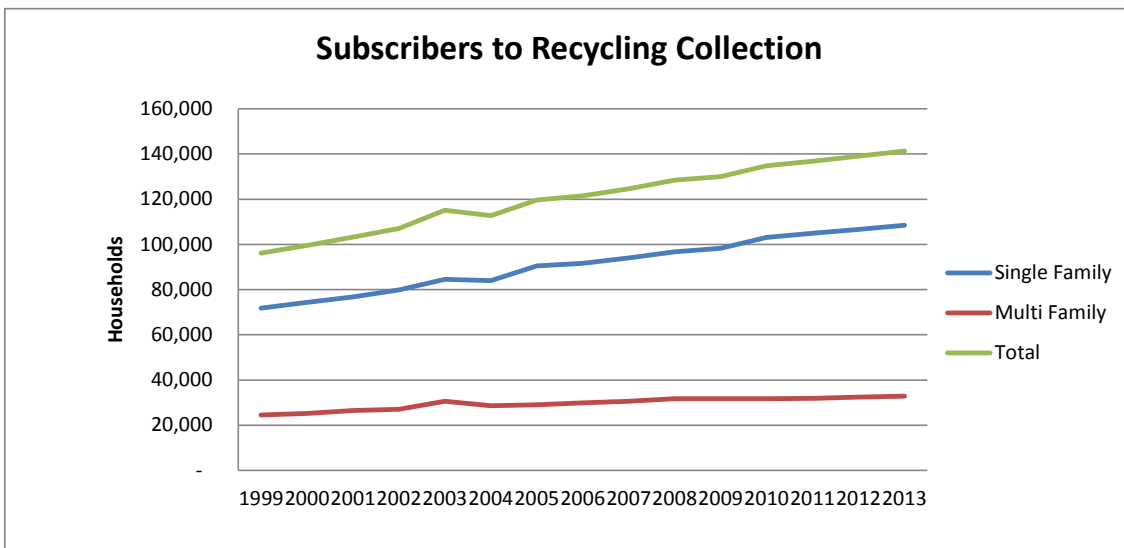
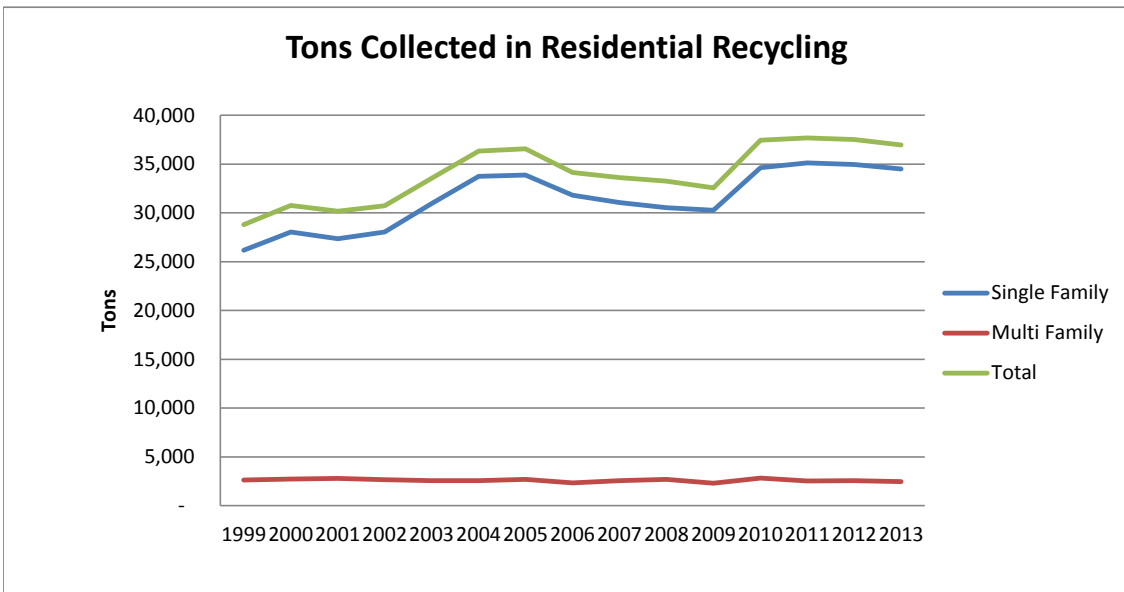
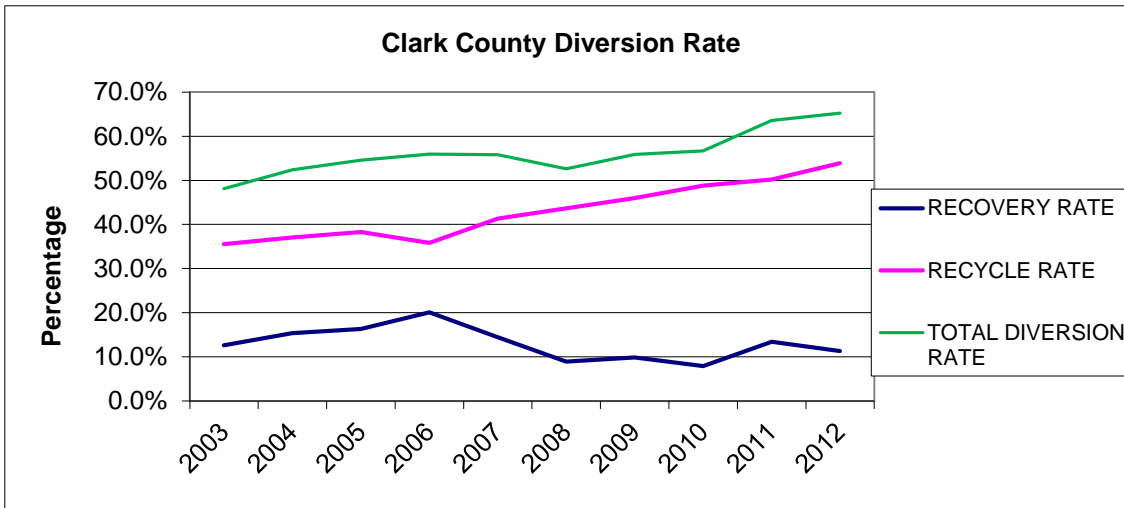
The Solid Waste Data Report

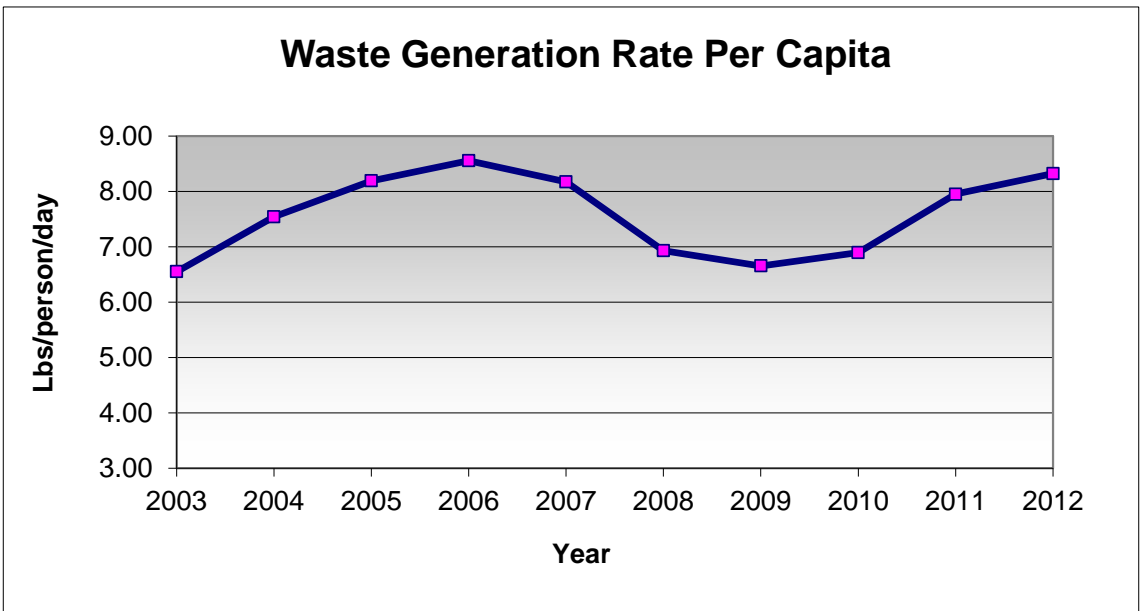
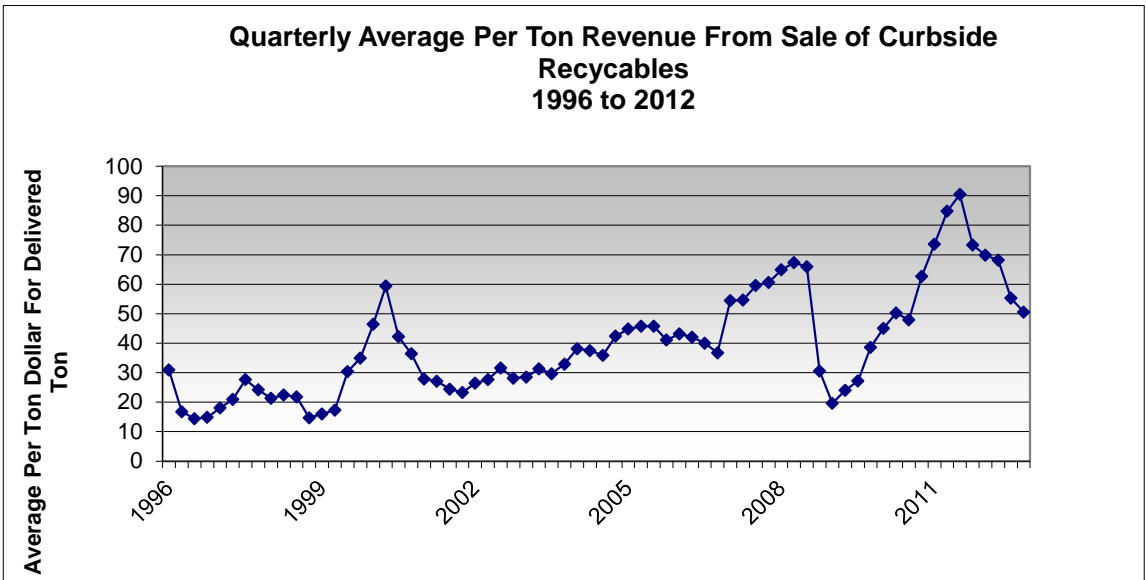
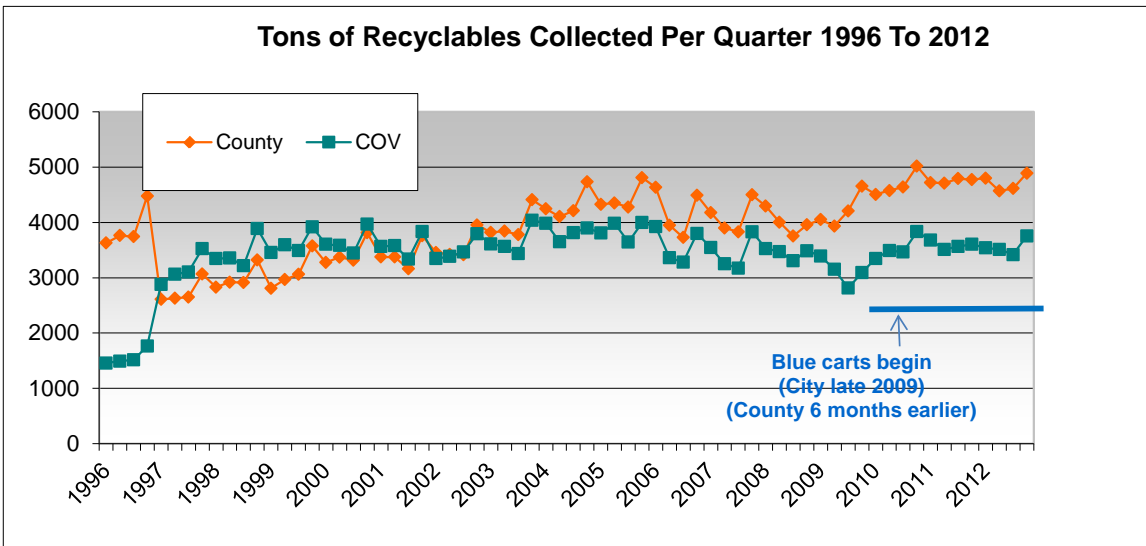


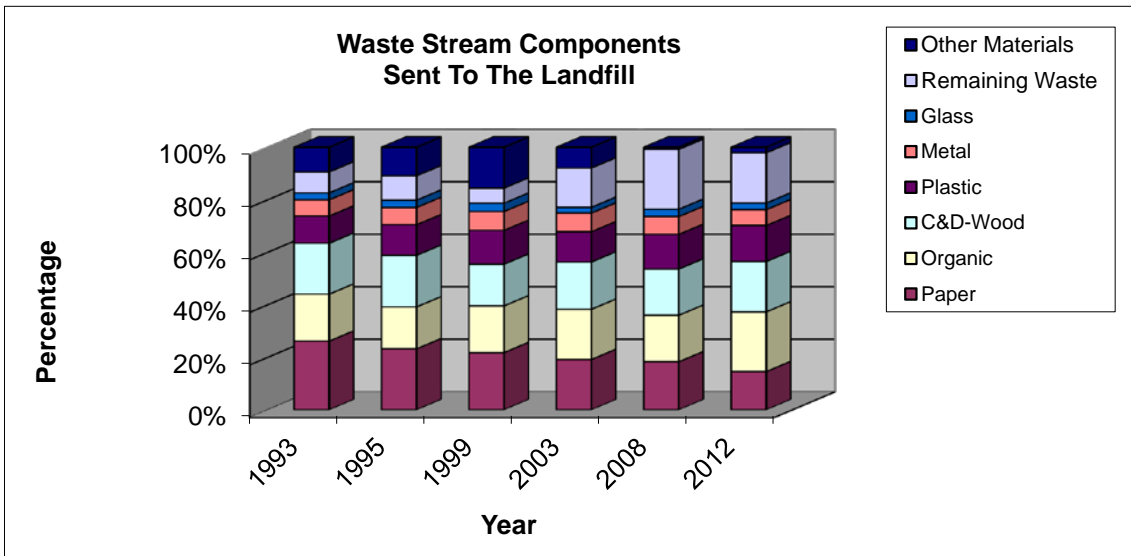
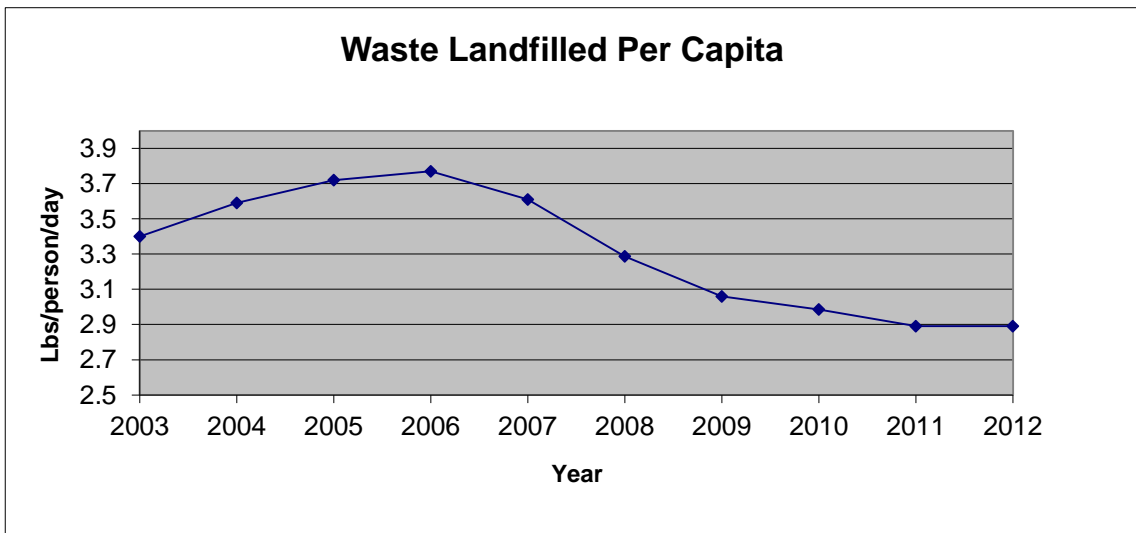
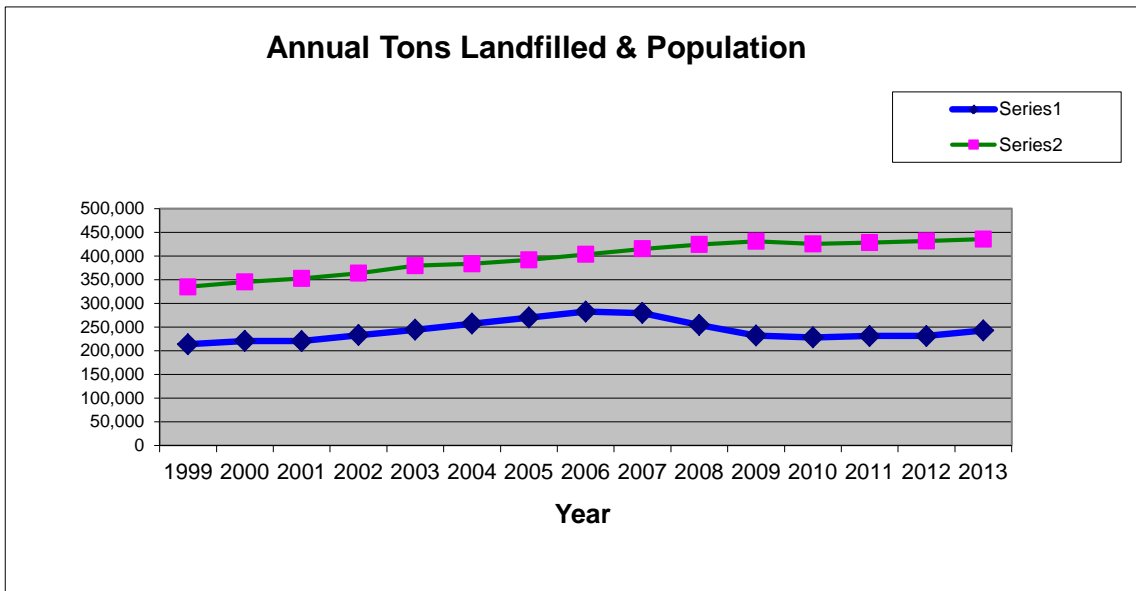
Clark County, WA

**Department of Environmental Services
Solid Waste and Environmental Education Division**

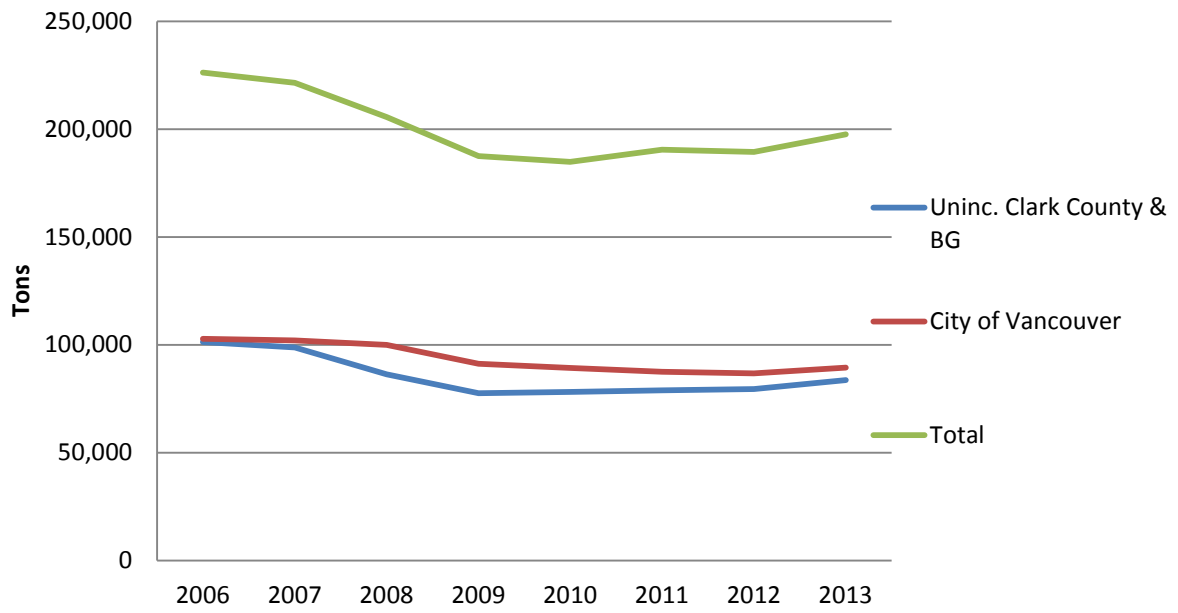
Executive Summary







Tons of Garbage Hauled by Waste Connections



# of Single Family Households												
Year	Total HH	% change	County UGA	County Rural	Battle Ground	Camas	La Center	Ridgefield	Vancouver	Washougal	Woodland	Yacolt
1999	102,303		34,643	19,241	2,646	4,194	545	717	37,251	2,696	42	328
2000	105,413	3.04%	35,905	19,596	2,861	4,406	581	725	38,188	2,776	43	332
2001	107,846	2.31%	36,960	19,877	3,048	4,583	601	730	38,790	2,867	43	347
2002	112,057	3.90%	38,631	20,432	3,494	5,060	640	738	39,577	3,086	43	356
2003	114,545	2.22%	39,479	20,795	3,865	5,225	670	745	40,124	3,242	43	357
2004	118,875	3.78%	41,276	21,268	4,390	5,434	730	911	40,894	3,561	45	366
2005	122,024	2.65%	42,436	21,737	4,526	5,745	797	1,057	41,413	3,886	45	382
2006	125,119	2.54%	43,810	22,058	4,623	5,788	847	1,351	41,929	4,226	45	442
2007	127,565	1.95%	45,797	21,056	4,750	5,930	862	1,496	42,781	4,393	46	454
2008	128,246	0.53%	46,048	21,081	4,929	6,033	890	1,491	42,747	4,514	46	467
2009	129,156	0.71%	46,426	21,054	5,006	6,175	896	1,512	43,013	4,559	46	469
2010	129,808	0.50%	46,616	21,046	5,079	6,314	962	1,595	43,050	4,627	46	473
2011	130,292	0.37%	46,761	21,176	5,093	6,369	973	1,628	43,107	4,666	46	473
2012	131,084	0.61%	46,956	21,242	5,133	6,422	976	1,717	43,420	4,696	45	477
2013	132,209	0.86%	47,397	21,292	5,219	6,509	988	1,880	43,648	4,755	44	477

Notes: single family housing units are based on property type codes: 10 -19 for single family and 70-79 for mobile homes.

Single Family Curbside Recycling (in tons – includes reject)									
Year	Urban County*	Rural County**	Vancouver	Subtotal	Camas	Washougal	Ridgefield	La Center	Totals
1999	10,802	871	12,542	24,215	1135	813			26,163
2000	11,579	1,449	12,636	25,664	1334	945	99		28,042
2001	11,321	1,485	12,184	24,990	1321	936	103		27,350
2002	10,942	2,568	12,091	25,601	1364	965	119		28,049
2003	13,147	1,976	12,815	27,938	1700	1,202	125		30,965
2004	14,509	2,036	13,882	30,427	1850	1,311	164		33,752
2005	14,630	2,305	13,686	30,621	1756	1,244	238		33,859
2006	13,705	2,364	12,471	28,540	1,768	1,252	247		31,807
2007	13,322	2,413	11,908	27,643	1,831	1,297	282		31,053
2008	12,977	2,347	11,768	27,092	1,859	1,318	271		30,540
2009	14,010	2,287	10,578	26,875	1,840	1,278	270		30,263
2010	15,331	2,828	12,236	30,395	2,341	1,567	324		34,627
2011	15,451	2,983	12,418	30,853	2,374	1,583	319	200	35,129
2012	15,216	3,041	12,271	30,529	2,468	1,645	302	200	34,944
2013	14,860	2,861	12,324	30,044	2,353	1,569	279	254	34,498

* Includes City of Battle Ground – 2002 expands to burn ban area

**The rural curbside collection program began March 1, 1999 (includes La Center, Yacolt)

*** tare weight adjustment April 2005

Notes: volume of recycling bins = 33.6 gallons (11.2 gallons per bin); WM and WCI swapped yard debris and recycling customers 2003; WCI assumes WM customers Sept. 2005; First full year for Blue Carts -2010 (rolled out spring & fall of 2009)

Source: Contractor Monthly Reports

Single Family Curbside Recycling (Average Households Served)									
Year	Urban County	Rural County	Vancouver	Subtotal	Camas	Washougal	Ridgefield	La Center	Totals
1999	26,981	2208	35,070	64,259	4430	3087			71,776
2000	27,895	2,926	35,807	66,628	4547	3,107			74,282
2001	29,372	3,323	36,463	69,158	4531	3,096			76,785
2002	29,776	4,845	37,391	72,012	4684	3,189			79,885
2003	33,586	4,302	38,418	76,306	4896	3,359			84,561
2004	35,792	4,661	34,842	75,295	5119	3,614			84,028
2005	37,632	5,232	38,444	81,308	5317	3,921			90,546
2006	38,716	5,630	37,022	81,368	5,425	4,232	625		91,650
2007	39,453	6,090	37,620	83,163	5,525	4,449	822		93,959
2008	40,453	6,110	38,836	85,399	5,652	4,665	930		96,646
2009	41,622	6,000	39,225	86,847	5,835	4,574	958		98,214
2010	43,826	7,200	39,996	91,022	6,435	4,356	1,210		103,023
2011	44,784	7,778	40,387	92,949	6,386	4,425	1,210	832	104,970
2012	45,406	8,197	40,733	94,336	6,487	4,500	1,303	832	106,626
2013	45,436	8,279	41,190	94,905	6,802	4,561	1,424	832	108,524

Source: Contractor Monthly Reports

Pounds of SF Materials Recycled Per Household Per Month

Year	Urban County	Rural County	Vancouver	Camas	Washougal	Ridgefield	La Center
1999	67	66	60	43	44		
2000	69	83	59	49	51		
2001	64	74	56	49	50		
2002	61	88	54	49	50		
2003	65	77	56	58	60		
2004	68	73	66	60	60		
2005	65	73	59	55	53		
2006	59	70	56	54	49	66	
2007	56	66	53	55	49	57	
2008	53	64	51	55	47	49	
2009	56	63	44	53	47	47	
2010	58	65	51	53	60	45	
2011	58	64	51	54	60	44	40
2012	58	59	51	63	61	39	40
2013	55	58	50	53	58	33	51

Multifamily Recycling (in tons – includes reject)

Year	Urban County*	Vancouver	Cardboard Cage*	Subtotal	Camas	Washougal	Ridgefield	Totals
1999	715	1,919		2,634				2,634
2000	752	1,966		2,718				2,718
2001	769	2,040		2,809				2,809
2002	740	1,922		2,662				2,662
2003	732	1,849		2,581				2,581
2004	761	1,814		2,575				2,575
2005	832	1,876		2,708				2,708
2006	712	1,441	185	2,338				2,338
2007	669.61	1,898		2,568				2,568
2008	670.18	2,025		2,695				2,695
2009	525.07	1,781		2,306				2,306
2010	581.71	1,905	347	2,487				2,487
2011	593.05	1,945	354	2,538				2,538
2012	609.27	1,955	358	2,564				2,564
2013	554.31	1,911	344	2,465				2,465

Source: Contractor Monthly Reports; cardboard incl. in county/city tonnage

Multifamily Recycling (Average Units Served)

Year	Urban County	Vancouver	Subtotal	Camas	Washougal	Ridgefield	Totals
1999	6,563	17,870	24,433				24,433
2000	6,756	18,456	25,212				25,212
2001	6,953	19,505	26,458				26,458
2002	7,251	19,861	27,112				27,112
2003	7,342	23,256	30,598				30,598
2004	7,455	21,220	28,675				28,675
2005	7,645	21,410	29,055				29,055
2006	7,884	21,926	29,810				29,810
2007	8,136	22,512	30,648				30,648
2008	8,550	23,213	31,763				31,763
2009	8,441	23,297	31,738				31,738
2010	8,346	23,409	31,755				31,755
2011	8,344	23,484	31,828				31,828
2012	8,614	23,745	32,359				32,359
2013	8,649	24,166	32,815				32,815

Source: Contractor Monthly Reports

Pounds of MF Materials Recycled Per Unit Per Month

Year	Urban County	Vancouver	Camas	Washougal	Ridgefield
1999	18	18			
2000	19	18			
2001	18	17			
2002	17	16			
2003	17	13			
2004	17	14			
2005	17	15			
2006	18	11			
2007	15	14			
2008	13	15			
2009	13	13			
2010	12	14			
2011	12	14			
2012	12	13			
2013	12	13			

Yard Debris Recycling (in tons)								
Year	Urban County*	Vancouver	Subtotal	Camas*	Washougal*	Ridgefield	La Center	Totals
1999	8,453	9835	18,288					18,288
2000	9,174	10,339	19,513	715	250			20,478
2001	8,505	9,308	17,813	829	297			18,939
2002	9,784	9,710	19,494	987	334			20,815
2003	9,972	10,297	20,269	976	316			21,561
2004	10,908	12,546	23,454	1,244	374			25,071
2005	9,732	12,750	22,482	1,463	763			24,708
2006	9,499	11,548	21,047	1,690	949	121	164	23,971
2007	10,351	10,717	21,068	1,765	1,126	201	219	24,379
2008	10,550	10,386	20,936	2,066	1,178	167	377	24,723
2009	12,090	11,005	23,095	2,042	1,193	285	274	26,888
2010	12,137	11,059	23,196	2,013	1,213	254	243	26,919
2011	11,284	11,597	22,881	1,871	1,179	340	351	26,622
2012	12,182	12,367	24,549	2,019	861	585	253	28,267
2013	14,000	12,005	26,005	1,621	1,045	338	308	29,317

* Waste Connections reports in cubic yards used City of Vancouver/County conversion of 750 pounds per compacted cubic yard.

* Includes City of Battle Ground, La Center, Yacolt – 2002 expands to burn ban area. WM and WCI swapped yard debris and recycling customers 2003; WCI assumes WM customers Sept. 2005.

Source: Contractor Monthly Reports

Yard Debris Recycling (Average Households Served)								
Year	Urban County*	Vancouver*	Subtotal	Camas	Washougal	Ridgefield	La Center	Totals
1999	8,928	11156	20,084					20,084
2000	9,629	12,575	22,204	1,414	462			24,080
2001	12,020	13,596	25,616	1,315	408			27,339
2002	13,664	14,173	27,837	1,460	441			29,738
2003	13,937	16,141	30,078	1,647	463			32,188
2004	15,224	16,325	31,549	1,844	548			33,941
2005	16,918	17,202	34,120	2,041	780			36,941
2006	18,171	17,911	36,082	2,166	980	221	282	39,731
2007	19,344	18,928	38,272	2,261	1,104	320	456	42,413
2008	20,469	19,666	40,135	2,358	1,202	358	365	44,418
2009	21,475	20,107	41,582	2,450	1,349	410	398	46,189
2010	22,747	19,656	42,403	2,532	1,591	458	438	47,422
2011	23,892	20,556	44,448	2,612	1,745	519	488	49,812
2012	25,073	17,255	42,328	2,696	1,855	602	513	47,994
2013	26,054	23,133	49,187	2,816	2,188	714	537	55,442

Source: Contractor Monthly Reports; * includes on call customers

Pounds of YD Recycled Per Household Per Month						
Year	Urban County	Vancouver	Camas	Washougal	Ridgefield	La Center
1999	158	147				
2000	159	137	84	90		
2001	118	114	105	121		
2002	119	114	113	126		
2003	119	106	99	114		
2004	119	128	112	114		
2005	96	124	119	163		
2006	87	107	130	161	91	97
2007	89	94	130	170	105	80
2008	86	88	146	163	78	172
2009	94	91	139	147	116	115
2010	89	94	133	127	92	92
2011	79	94	119	113	109	120
2012	81	119	125	77	162	82
2013	90	86	96	80	79	96

Garbage						
Year	County Inbound Tons	% increase over previous year	County Outbound Tons	% increase over previous year	Population	% increase over previous year
1993	183,210		173,092		269,500	
1994	196,385	7.2%	182,537	5.5%	280,800	4.2%
1995	197,446	0.5%	185,690	1.7%	291,000	3.6%
1996	216,420	9.6%	202,981	9.3%	303,500	4.3%
1997	223,906	3.5%	209,960	3.4%	319,000	5.1%
1998	223,280	-0.3%	211,487	0.7%	328,000	2.8%
1999	227,259	1.8%	213,696	1.0%	334,651	2.0%
2000	233,113	2.6%	220,459	3.2%	345,238	3.2%
2001	232,499	-0.3%	220,277	-0.1%	352,600	2.1%
2002	242,554	4.3%	232,769	5.7%	363,400	3.1%
2003	254,019	4.7%	244,021	4.8%	379,577	4.5%
2004	266,993	5.1%	256,899	5.3%	383,300	1.0%
2005	281,566	5.5%	270,016	5.1%	391,500	2.1%
2006	291,362	3.5%	282,508	4.6%	403,500	3.1%
2007	286,230	-1.8%	279,414	-1.1%	415,000	2.9%
2008	263,236	-8.0%	254,468	-8.9%	424,200	2.2%
2009	237,548	-9.8%	231,759	-8.9%	431,200	1.7%
2010	236,488	-0.4%	227,868	-1.7%	425,363	-1.4%
2011	232,866	-1.5%	231,030	1.4%	428,000	0.6%
2012	240,325	1.6%	230,956	1.36%	431,250	1.4%
2013	248,640	6.8%	242,588	5.00%	435,500	1.8%

Note: Tons sent to landfill (OUTBOUND) includes special waste (Industrial Waste, Contaminated Soils, Asbestos, Wastewater Treatment Plant Ash). Source: CRC monthly reports; 2011 population US Census Bureau estimate; 2012 population to be update when data is available

Tons of Garbage - City of Vancouver							
Year	Hauler	Residential	Commercial	Multifamily	Dropbox	Subtotals	Total
1999	WMV	10,115	21,388		25,159	56,661	88,775
	WCI	12,089	5,113	1,802	13,110	32,114	
2000	WMV	10,933	21,550		26,132	58,615	89,026
	WCI	11,857	8,604	4,064	5,885	30,410	
2001	WMV	10,669	21,358		25,032	57,059	88,118
	WCI	12,345	8,614	4,728	5,372	31,059	
2002	WMV	11,230	20,790		22,261	54,281	86,704
	WCI	12,370	8,800	4,330	6,923	32,423	
2003	WMV	11,264	21,115		18,832	51,211	87,108
	WCI	13,335	9,727	4,522	8,313	35,897	
2004	WMV	11,796	21,765		19,543	53,104	90,621
	WCI	14,581	9,904	4,551	8,481	37,517	
2005	WMV	7,950	11,698		15,162	34,809	94,033
	WCI	18,834	18,662	5,804	15,923	59,223	
2006	WCI	27,576	34,155	8,988	32,077		102,795
2007	WCI	28,005	34,053	9,058	30,948		102,063
2008	WCI	27,504	32,156	8,991	31,309		99,960
2009	WCI	27,542	29,046	8,677	26,056		91,322
2010	WCI	26,400	29,143	8,821	24,966		89,330
2011	WCI	26,001	28,004	8,486	25,004		87,495
2012	WCI	26,331	28,119	8,155	24,204		86,809
2013	WCI	26,019	29,016	8,926	25,461		89,422

Source: Contractor reports to City of Vancouver

Tons of Garbage - WUTC (Unincorporated Clark County + Battle Ground)						
Year	Hauler	Residential	Commercial	Multifamily	Dropbox	Total
2006	WCI	49,801	21,008	1,106	29,503	101,418
2007	WCI	49,577	22,386	1,178	25,644	98,785
2008	WCI	47,247	16,109	1,028	22,028	86,412
2009	WCI	44,537	14,219	908	17,897	77,561
2010	WCI	44,675	14,830	947	17,741	78,193
2011	WCI	43,931	16,879	1,077	17,069	78,956
2012	WCI	44,844	17,346	1,107	16,264	79,561
2013	WCI	46,204	20,371	1,300	15,827	83,702

Source: WCI; Note: Unincorporated Clark County includes La Center and Yacolt

**SFGarbage Customer Census
(City of Vancouver)**

	Weekly				Every Other Week		Monthly	Other	Total Residential Garbage Customers
	20 Gal.	32 Gal.	64 Gal.	96 Gal.	20 Gal.	32 Gal.	32 Gal.		
1999	5%	68%	9%	1%	2%	9%	5%	1%	37,389
2000	5%	69%	9%	0.60%	2%	9%	4%	0.4%	35,085
2001	5%	67%	9%	0.64%	1%	9%	4%	4%	35,793
2002	4%	68%	9%	0.68%	1%	9%	5%	3%	36,234
2003	4%	68%	8%	0.67%	1%	9.18%	5%	4%	37,081
2004	5%	67%	9%	1%	1%	9%	4%	4%	37,463
2005	4%	68%	12%	1%	1%	8%	4%	2%	38,989
2006	4%	66%	13%	1%	1%	8%	4%	3%	39,272
2007	4%	67%	14%	1%	1%	8%	3%	2%	39,916
2008	4%	65%	15%	1%	1%	9%	4%	1%	40,144
2009	4%	65%	15%	1%	1%	9%	4%	1%	40,181
2010	4%	64%	13%	1%	1%	11%	4%	2%	40,500
2011	4%	66%	12%	1%	1%	12%	4%	0%	40,785
2012	4%	65%	12%	1%	1%	12%	4%	1%	41,238
2013	4%	63%	12%	1%	1%	13%	4%	3%	41,771

**SF Garbage Customer Census
(WUTC - Clark County)**

	Weekly				Every Other Week		Monthly	Total Residential Garbage Customers
	20 Gal.	32 Gal.	(2) 32 Gal.	(3-5) 32 Gal.	20 Gal.	32 Gal.	32 Gal.	
1999	2.70%	71.90%	13.90%	0.70%	0.80%	6.00%	3.90%	52,874
2006	1.48%	64.19%	22.29%	1.74%	0.47%	7.79%	2.05%	52,609
2007	1.31%	63.93%	22.05%	1.95%	0.39%	8.56%	1.81%	55,579
2008	1.27%	64.51%	21.65%	1.86%	0.38%	8.90%	1.43%	56,224
2009	1.21%	66.47%	19.74%	1.45%	0.40%	10.74%	0.00%	55,064
2010	1.13%	66.95%	18.19%	1.29%	0.48%	11.96%	0.00%	55,933
2011	1.10%	65.64%	17.03%	1.00%	0.42%	12.48%	2.33%	57,818
2012	1.09%	65.37%	16.36%	0.98%	0.42%	13.38%	2.40%	58,632
2013	1.10%	65.60%	15.80%	1.00%	0.40%	13.60%	2.40%	59,763

Tons of Garbage - City of Washougal							
Year	Hauler	Residential	Commercial	Multifamily	Dropbox	Total	Customers
2006	WCI	3,263	2,171	148	3,004	8,586	5,108
2007	WCI	3,522	1,607	103	3,020	8,252	5,795
2008	WCI	3,309	1,762	112	2,722	7,905	6,141
2009	WCI	4,086	1,784	107	1,684	7,661	4,696
2010	WCI	2,863	1,589	101.42	1,616	6,169	4,717
2011	WCI	4,616	1,753	194.70	6,147	12,710	4,738
2012	WCI	3,745	1,723	191.40	5,393	11,052	4,817
2013	WCI	3,445	1,734	218.00	5,698	11,095	4,573

Source: WCI

Tons of Garbage - City of Camas							
Year	Hauler	Residential	Commercial	Multifamily	Dropbox	Subtotals	Total
2006	CAMAS					7,172	9,962
	WCI				2,790	2,790	
2007	CAMAS					7,114	9,026
	WCI				1,912	1,912	
2008	CAMAS					6,854	8,819
	WCI				1,965	1,965	
2009	CAMAS					6,560	8,250
	WCI				1,690	1,690	
2010	CAMAS					6,723	8,583
	WCI	0	11		1,860	1,860	
2011	CAMAS					6,739	8,450
	WCI				1,711	1,711	
2012	CAMAS					6,787	8,675
	WCI				1,888	1,888	
2013	CAMAS					6,668	8,736
	WCI				2,068	2,068	

Source: WCI; City of Camas

Tons of Garbage - City of Ridgefield							
Year	Hauler	Residential	Commercial	Multifamily	Dropbox	Total	Customers
2006	WCI	799	588	0	2,071	3,458	1,046
2007	WCI	1,047	763	0	1,663	3,473	1,299
2008	WCI	938	525	0	1,145	2,608	1,362
2009	WCI	1,202	540	0	975	2,717	1,414
2010	WCI	1,050	578	0	1,030	2,657	1,463
2011	WCI	1,005	523	0	1,451	2,979	1,547
2012	WCI	1,043	356	0	2,015	3,414	1,674
2013	WCI	1,148	433	0	3,134	4,715	1,369

Source: WCI

HOUSEHOLD HAZARDOUS WASTE										
YEAR	POUNDS COLLECTED					DISPOSAL OPTION-POUNDS INCINERATED				
	Mobile	CRC Fixed	Curbside	Other Sites ^a	TOTAL	REACTIVES (liquid, solid and aerosol)	REACTIVES (dangerous when wet, oxidizers, peroxides)	FLAMMABLE SOLIDS	TOTAL	TOTAL
1999	17,705	889,545	512,260	115,480	1,534,990	35,718	2,514	615	38,847	
2000	26,587	679,348	438,380	298,227	1,442,542	31,220	2,295	400	33,915	
2001	49,667	738,077	463,240	375,632	1,626,616	41,092	3,285	357	44,734	
2002	35,698	787,051	385,020	451,484	1,659,253	47,141	2,925	543	50,609	
2003	112,592	915,372	366,800	484,510	1,879,274	67,110	2,713	87	69,910	
2004	109,177	1,248,557	476,400	266,977	2,101,111	63,191	4,443	412	68,046	
2005	114,476	1,462,579	636,960	205,440	2,419,455	64,746	5,359	150	70,255	
2006	256,761	1,712,845	436,324	150,560	2,556,490	76,213	4,426	40	80,679	
2007	213,763	1,736,080	407,940	133,620	2,491,403	54,995	4,983	61	60,039	
2008	248,559	1,813,819	420,352	139,000	2,621,730	69,307	5,721	653	75,681	
2009	125,291	1,543,532	441,200	127,536	2,237,559	61,574	3,048	291	64,913	
2010	154,552	1,595,778	734,861	118,820	2,604,011	100,059	3,453	87	103,599	
2011	106,358	2,297,559	574,204	135,132	3,113,253	117,864	5,215	86	123,165	
2012	136,764	2,103,604	481,075	113,860	2,835,303	126,546	6,036	437	133,019	
2013	91,925	2,264,961	553,620	144,193	3,054,699	122,801	4,943	294	128,038	
TOTAL	1,799,875	21,788,707	7,328,636	3,260,471	34,177,689	1,079,577	61,359	4,513	884,392	
YEAR	DISPOSAL OPTION-POUNDS RECYCLED									
	ANTIFREEZE	BATTERIES	MIXED BATTERIES	VEHICLE BATTERIES	BLOCK FOAM	FLOORS	E-WASTE	LATEX PAINT	MERCURY BEARING WASTE	OIL FILTERS
1999	21,230	3,671		176,050	0	0	115,539	16	0	316,506
2000	23,110	3,712		180,550	0	0	172,585	0	0	379,957
2001	28,725	5,404		183,870	0	50	207,076	5	0	425,130
2002	28,063	5,509		201,955	0	7,144	196,426	70	0	439,167
2003	37,720	9,231		213,140	0	6,249	123,176	243,797	28	633,341
2004	40,210	14,449		232,460	555	3,283	190,080	204,563	9	686,534
2005	34,913	13,697		214,152	0	12,518	214,952	181,155	87	671,474
2006	38,390	20,333		194,960	2,990	22,540	431,798	164,514	168	876,143
2007	28,510	14,250		189,680	17,670	8,873	540,809	200,576	565	1,001,183
2008	31,920	26,309		143,270	14,580	13,717	415,123	311,186	120	956,895
2009	165,500	30,843		133,730	14,645	9,962	141,924	111,304	24	608,112
2010	45,043	50,314		128,563	16,670	13,283	282,218	529,345	53	1,065,854
2011	48,816	54,640		83,820	10,861	14,346	797,651	517,690	268	1,528,092
2012	49,580	60,391		77,205	19,536	10,832	746,989	573,000	103	1,537,636
2013	55,340	81,175		63,395	54,245	21,936	711,196	622,640	104	1,610,431
TOTAL	677,070	393,928		2,416,800	151,752	144,733	4,595,916	4,351,396	1,620	9,588,388
YEAR	DISPOSAL OPTION-POUNDS ALTERNATIVE FUELS					DISPOSAL OPTION-POUNDS LANDFILLED				
	AEROSOL PROPAGANTS, etc)	MOTOR OIL	PAINT	RECYCLED MATERIALS	TOTAL	PCB BALLASTS	LATEX PAINT	E-WASTE	SHARPS	TOTAL
1999	16,030	840,280		129,598	1,094,968	0	76,205	0	0	76,205
2000	12,355	721,360		160,968	83,380	978,063	600	40,212	0	40,812
2001	8,340	772,480		166,154	134,448	1,081,422	850	68,927	0	69,777
2002	15,642	708,140		168,316	150,173	1,042,271	800	116,050	0	116,850
2003	10,900	700,960		179,959	148,543	1,040,362	634	81,460	29,024	111,118
2004	8,186	809,640		187,485	172,973	1,178,284	684	124,792	16,005	137,272
2005	10,583	1,078,720		192,942	169,003	1,451,248	1,053	159,056	37,933	4,020
2006	16,774	803,380		253,434	214,355	1,287,943	672	225,566	51,695	4,240
2007	16,005	721,480		207,466	152,962	1,097,913	1,284	229,656	75,725	980
2008	15,890	707,260		250,645	134,250	1,108,045	2,029	392,964	42,820	11,960
2009	17,784	710,596		222,258	75,205	1,025,843	110	491,067	7,033	11,840
2010	24,591	952,108		264,295	72,620	1,313,614	3,940	42,760	9,420	17,880
2011	23,212	915,160		271,500	65,290	1,275,162	953	12,900	91,131	18,640
2012	23,113	679,500		289,840	78,695	1,071,148	1,921	0	7,140	21,500
2013	29,651	726,925		270,567	73,890	1,101,033	2,083	0	125,502	26,560
TOTAL	249,056	11,847,989		3,215,427	1,834,847	14,975,138	17,613	2,061,615	493,428	118,992
YEAR	DISPOSAL OPTION-POUNDS TREATED			DISPOSAL OPTIONS BY PER CENT OF TOTALS						
	ACIDS	BASIS	TOTAL	Recycle	Incinerated	Alternative Fuel	Treatment	Landfill	TOTAL	
1999	4,475	3,989	8,464	21%	3%	71%	1%	5%	100%	
2000	4,215	5,580	9,795	26%	2%	68%	1%	3%	100%	
2001	912	4,641	5,553	26%	3%	66%	0%	4%	100%	
2002	5,266	5,090	10,356	26%	3%	63%	1%	7%	100%	
2003	10,451	14,092	24,543	34%	4%	55%	1%	6%	100%	
2004	9,852	15,542	25,394	33%	3%	56%	1%	7%	100%	
2005	9,900	14,516	24,416	28%	3%	60%	1%	8%	100%	
2006	11,355	18,197	29,552	34%	3%	50%	1%	11%	100%	
2007	10,328	14,295	24,623	40%	2%	44%	1%	12%	100%	
2008	11,546	19,790	31,336	36%	3%	42%	1%	17%	100%	
2009	10,824	17,817	28,641	27%	3%	46%	1%	23%	100%	
2010	14,100	32,844	46,944	41%	4%	50%	2%	3%	100%	
2011	16,253	46,957	63,210	49%	4%	41%	2%	4%	100%	
2012	18,835	44,104	62,939	55%	5%	37%	2%	1%	100%	
2013	18,867	42,185	61,052	53%	4%	36%	2%	5%	100%	
TOTAL	157,179	299,639	332,827	28%	3%	44%	1%	4%	100%	
YEAR	PARTICIPANTS									
	MOBILE	CRC	JAIL WORK CENTER/ EMPPOWER UP	PHILIP SERVICES	PAINT TAKE BACK	HOME COLLECTION	CONTROLLED SUBSTANCES	TOTAL PARTICIPANTS	TOTAL POUNDS ALL DISPOSAL OPTIONS	POUNDS PER PARTICIPANT
1999	159	4,366	29,732	0	0	0	0	34,257	1,534,990	45
2000	369	3,402	27,553	0	0	0	0	31,324	1,442,542	46
2001	522	3,130	34,470	0	0	0	0	38,122	1,626,616	43
2002	408	2,793	30,241	0	183	0	34	33,659	1,659,253	49
2003	877	3,476	33,746	734	285	0	16	39,134	1,879,274	48
2004	1,599	4,335	38,578	1,351	317	0	5	46,221	2,101,111	45
2005	1,465	8,515	39,532	1,468	389	147	6	51,671	2,419,455	47
2006	3,284	9,598	36,039	2,440	474	223	12	52,279	2,556,490	49
2007	2,536	11,448	35,678	2,532	611	212	3	53,321	2,491,403	47
2008	4,553	9,296	33,416	3,216	761	198	7	51,917	2,621,730	50
2009	3,135	6,316	33,592	1,750	515	721	4	789	2,237,559	48
2010	5,783	8,202	42,315	2,846	2	807	5	964	2,604,011	43
2011	1,273	9,611	37,821	5,008	4	858	4	1,380	2,835,303	56
2012	2,070	10,844	36,693	4,400	1	1,104	3	1,878	2,835,303	50
2013	1,083	11,445	58,843	4,014	3	1,238	3	1,418	3,054,699	39

HHW SUMMARY BY COLLECTION VENUE						
YEAR	CURBSIDE RECYCLING	FIXED FACILITIES*	MOBILE EVENTS**	METRO LATEX	OTHER EVENTS***	TOTAL
1993	464,920	699,892	0	0	23,260	1,188,072
1994	332,816	435,401	0	0	54,880	823,097
1995	400,280	581,925	0	0	53,960	1,036,165
1996	422,020	872,470	0	0	64,880	1,359,370
1997	501,820	745,923	0	0	91,240	1,338,983
1998	536,780	746,630	12,322	0	100,560	1,396,292
1999	512,260	889,545	17,705	0	115,480	1,534,990
2000	438,380	477,101	26,587	202,247	298,227	1,442,542
2001	463,240	485,187	49,667	252,890	375,632	1,626,616
2002	385,020	482,175	35,698	304,876	451,484	1,659,253
2003	366,800	608,415	112,592	306,957	484,510	1,879,274
2004	476,400	937,502	109,177	311,055	266,977	2,101,111
2005	636,960	1,135,417	114,476	327,162	205,440	2,419,455
2006	436,324	1,374,665	256,761	338,180	150,560	2,556,490
2007	407,940	1,339,548	213,763	396,532	133,620	2,491,403
2008	420,352	1,143,069	248,559	670,750	139,000	2,621,730
2009	441,200	1,101,064	125,291	442,468	127,536	2,237,559
2010	734,861	1,595,778	154,552	0	118,820	2,604,011
2011	574,204	1,787,519	106,358	510,040	135,132	3,113,253
2012	481,075	2,103,604	136,764	0	113,860	2,835,303
2013	553,620	2,264,961	91,925	0	144,193	3,054,699
TOTAL	9,987,272	19,542,830	1,720,272	4,063,157	3,505,058	41,319,668
Yearly Average	665,818	1,302,855	114,685	270,877	233,671	2,754,645

***INCLUDES CENTRAL TRANSFER AND RECYCLING CENTER, WEST VAN MATERIALS RECOVERY CENTER, PHILIP SERVICES CORPORATION, JAIL WORK CENTER, SHERIFF'S WEST PRECINCT, AND HOME COLLECTION PROGRAM**

****INCLUDES PAINT TAKE BACK PROGRAM**

**** PUBLIC DROP-OFF SITES FOR USED OIL**

Year	Tons Landfilled*	Tons Recycled	Tons Recovered**	Recycling Rate	Diversion Rate	Population	Pounds Per Capita Landfilled Per Day	Diversion		Pounds Per Capita Generated Per Day
								Pounds Per Capita Recycled Per Day	Pounds Per Capita Recovered Per Day	
2003	235,284	161,295	57,192	35.5%	48.1%	379,577	3.40	2.33	0.83	6.55
2004	251,171	195,451	81,049	41.0%	55.4%	383,300	3.59	2.79	1.16	7.54
2005	265,690	224,099	95,487	38.3%	54.6%	391,500	3.72	3.14	1.34	8.19
2006	277,529	225,930	126,560	35.9%	55.9%	403,500	3.77	3.07	1.72	8.56
2007	273,619	256,105	89,300	41.4%	55.8%	415,000	3.61	3.38	1.18	8.17
2008	254,468	221,821	79,020	43.6%	52.6%	424,200	3.29	2.87	1.02	7.17
2009	231,759	241,814	52,322	46.0%	55.9%	432,999	2.93	3.06	0.66	6.66
2010	227,868	271,789	32,599	49.1%	8.0%	432,999	2.88	3.44	0.41	6.74
2011	228,719	315,918	84,166	50.2%	13.4%	428,000	2.93	4.04	1.08	8.05
2012	231,487	359,169	75,110	53.9%	11.3%	431,250	2.94	4.56	0.95	8.46

* MARR total adjusted outbound (no Metro, no Special Waste)

****DRAFT****

2012	
RECYCLE RATE	53.9%
RECOVERY RATE	11.3%
TOTAL DIVERSION RATE	65.2%

2011	
RECYCLE RATE	50.2%
RECOVERY RATE	13.4%
TOTAL DIVERSION RATE	63.6%

2010	
RECYCLE RATE	49.1%
RECOVERY RATE	8.0%
TOTAL DIVERSION RATE	57.1%

GARBAGE	231487
RECYCLED Items	
Sheetrock	7
Yard Debris Inbound	63,132
Yard Debris (CY)	110
Food Waste	2,241
OCC / Cores	24,465
MCDB	5,493
Newsprint	19,412
Paper	15,092
Glass	9,871
Glass Cullet	-2,495
Appliances	91
Alum	480
Other Non-Ferrous	2,615
Tin Cans	1,138
Ferrous	40,785
Plastic - PET	1,089
Plastic - HDPE Nat	855
Plastic - HDPE Col	468
Plastic - LDPE	2,066
Plastic - Other	1,700
Foam Padding	17
Wood Recy	796
Commingled	77
Batteries (Car)	845
Batteries (HH)	6
Latex Paint	81
Flourescent Lights	0
Antifreeze	317
Toner Cartridges	0
Electronics	1,832
Rubble	164,767
Other	1,813
TOTAL	359,169

GARBAGE	228,718	Change from PY
RECYCLED Items		
Sheetrock	290	68
Yard Debris Inbound	61,668	-1891
Yard Debris (CY)	519	-499
Food Waste	2,444	-450
OCC / Cores	26,356	848
MCDB	71	-6555
Newsprint	19,564	14247
Paper	18,099	-12050
Glass	6,412	5015
Glass Cullet	1,519	649
Appliances	85	84
Alum	984	567
Other Non-Ferrous	2,142	-1268
Tin Cans	1,162	21
Ferrous	23,044	-72919
Plastic - PET	1,210	817
Plastic - HDPE Nat	785	-906
Plastic - HDPE Col	438	360
Plastic - LDPE	-	0
Plastic - Other	132,490	126911
Foam Padding	282	-57
Wood Recy	11,988	11978
Commingled	21	21
Batteries (Car)	705	70
Batteries (HH)	18	-54
Latex Paint	81	81
Flourescent Lights	-	0
Antifreeze	345	93
Toner Cartridges	-	0
Electronics	2,170	196
Other	1,025	-10514
TOTAL	315,918	54865

GARBAGE	227,868
RECYCLED Items	
Sheetrock	222
Yard Debris Inbound	63559
Yard Debris (CY)	1018
Food Waste	2895
OCC / Cores	25508
MCDB	6626
Newsprint	5317
Paper	30149
Glass	1397
Glass Cullet	870
Appliances	1
Alum	417
Other Non-Ferrous	3410
Tin Cans	1141
Ferrous	95963
Plastic - PET	393
Plastic - HDPE Nat	1691
Plastic - HDPE Col	78
Plastic - LDPE	
Plastic - Other	5579
Foam Padding	339
Wood Recy	10
Commingled	0
Batteries (Car)	635
Batteries (HH)	72
Latex Paint	0
Flourescent Lights	0
Antifreeze	252
Toner Cartridges	0
Electronics	1974
Other	11539
TOTAL	261052

DIVERSION items (No Auto Hulks)	
C&D	3
Wood Energy Rec	67,703
Oil	3,887
Oil Filters	121
Tires	948
HHW Fuel	0
Rendering	922
Rubble * (non Rinker/Schmid)	
Roofing	1,375
Vactor/Sweepings/Brush	0
latex paint	151
TOTAL	75,110

DIVERSION items (No Auto Hulks)		
C&D	1,194	1194
Wood Energy Rec	63,182	29498
Oil	4,185	-519
Oil Filters	119	-9
Tires	1,789	393
HHW Fuel	-	0
Rendering	890	890
Rubble * (non Rinker/Schmid)	1,691	567
Roofing	10,758	9553
Vactor/Sweepings/Brush	-	0
latex paint	358	0
TOTAL	84,166	41567

RECOVERY items (No Auto Hulks)	
C&D	0
Wood Energy Rec	33684
Oil	4704
Oil Filters	128
Tires	1396
HHW Fuel	0
Rendering	0
Rubble	1124
Roofing	1205
Vactor/Sweepings/Brush	0
Latex Paint	358
TOTAL	42599

665766

628802

531519

**Avoided Greenhouse Gas Emissions -
(MTCO₂E - Million Tons Carbon Dioxide Equivalent)**

Commodity	MTCO₂E Saved
	2012
Aluminum Cans	(6,802)
Steel Cans	(2,569)
Glass	(1,449)
HDPE	(1,009)
PET	(2,114)
Corrugated Containers	(19,373)
Newspaper	(2,563)
Food Scraps	(33,535)
Yard Trimmings	539
Branches	(33,209)
Mixed Paper (general)	(31,902)
Mixed Plastics	
Tires	
Asphalt Shingles	(496)
Drywall	(669)

2012
Total Change in GHG Emissions: (135,151)
MTCO₂E

This is equivalent to...	
Removing	28,453
Passenger Cars from the Roadway Each Year*	

Solid Waste & Recycling Contractor Services				
	Single-family Recycling	Multifamily Recycling	Yard Debris	Garbage
Ridgefield	Contractor: WCI Expires: December 31, 2019 Option to extend for 2 – 5 year periods			
Camas*	Contractor for recycling & yard waste: WCI Expires: December 31, 2019 Option to extend for 4 – 5 year periods			
	Contractor for roll off service: WCI Extended through December 31, 2018 Option to extend for 1 more 5 year period			
Washougal	Contractor: WCI Expires: April 1, 2024 Option to extend for 4 – 5 year periods			
Vancouver	Contractor: WCI Expires: January 31, 2020			
County-Urban (includes City of Battle Ground, La Center)	Contractor: WCI Expires: December 31, 2018; one 1-year extension.		Contractor: WCI; 7/31/23 with two 1-year extensions	WUTC
County-Rural (includes City of La Center, Town of Yacolt)				WUTC
County Contract with Columbia Resource Company - December 31, 2021; one additional 5-year extension; option for purchase				
* Camas hauls residential				
WCI = Waste Connections, Inc. (www.wasteconnections.com); www.wcnorthwest.com/				
WCI holds contract for School Recycling (Battle Ground, Camas, Evergreen, Hockinson, La Center, Ridgefield, Vancouver, and Washougal school districts). Expires September 3, 2018. Option to extend for one 2-year period				
Philip Services Corp: Mobile Collection & Door-to-Door. Contract expires December 31, 2015 RFP to be issued June 2015				
EmpowerUp - contract expires 12/31/14				

Solid Waste Disposal “Tip” Fee				
	Tipping Fee	Drop Loads (per ton)	Percent Change	Transaction Fee
1998	\$74.50	n/a	-	n/a
1999	\$66.85	\$59.40	-	\$10.00 per load
1999 (July 1)	\$65.10	\$57.65	-	\$10.00 per load
2000	\$65.10	\$57.65	-	\$10.00 per load
2001	\$67.56	\$59.83	3.8%	\$10.00 per load
2002	\$69.04	\$61.14	2.2%	\$10.00 per load
2003	\$69.78	\$61.79	1.1%	\$10.00 per load
2004	\$70.73	\$62.64	1.4%	\$10.00 per load
2005	\$71.75	\$63.53	1.4%	\$10.00 per load
2006	\$73.18	\$64.80	2.0%	\$10.00 per load
2007	\$74.72	\$66.16	2.1%	\$10.00 per load
2008	\$76.77	\$67.98	2.8%	\$10.00 per load
2009	\$79.35	\$70.26	3.4%	\$10.00 per load
2010	\$79.35	\$70.26	0.0%	\$10.00 per load
2011	\$80.96	\$71.68	2.0%	\$10.00 per load
2012	\$82.78	\$73.29	2.2%	\$10.00 per load
2013	\$84.28	\$74.62	1.8%	\$10.00 per load
2014	\$85.61	\$75.81	1.6%	\$10.00 per load

*Fourth Amendment: Tip fee for MSW reduced from \$66.85 to \$65.10, and Tip Fee for Drop Box reduced from \$59.40 to \$57.65 on July 1, 1999
<http://data.bls.gov>

Waste Stream Analysis						
Category	1993	1995	1999	2003	2008	2012
Paper	26.2%	23.3%	21.8%	19.2%	18.3%	14.6%
Newspaper	1.8%	2.0%	2.1%	1.6%	1.0%	0.7%
Cardboard	4.7%	5.3%	4.7%	4.0%	4.7%	3.1%
Office and Computer	0.9%	0.9%	0.9%			
Mixed Waste Paper	7.7%	6.7%	4.2%	7.0%	5.8%	4.5%
Magazines			1.1%			
Milk Cartons, Other			0.2%		0.2%	0.2%
Non-Recyclable Paper	11.1%	8.4%	8.5%	6.5%	6.5%	3.7%
Plastic	10.4%	11.6%	12.9%	11.5%	13.2%	13.7%
PET Bottles	0.2%	0.4%	0.4%	2.2%	0.8%	0.74%
HDPE Bottles	0.6%	0.7%	0.5%		0.6%	0.45%
Bottles 3-7			0.1%		0.1%	0.06%
Tubs						0.22%
Film and Bags						5.20%
Plastic Packaging	3.9%	6.9%	6.8%	7.7%	7.4%	0.36
Other Plastic Products	5.4%	3.0%	4.3%	1.7%	3.7%	6.06%
Expanded Polystyrene	0.3%	0.6%	0.8%		0.6%	0.62%
Metal	6.2%	6.6%	7.2%	7.1%	6.8%	6.0%
Aluminum Cans	0.4%	0.4%	0.4%	0.3%	0.3%	0.3%
Aluminum Containers	0.1%	0.1%	0.1%			
Tin Cans	0.9%	1.1%	0.9%		0.9%	0.6%
Mixed Metals/Materials	2.2%	1.5%	2.9%	3.3%	2.4%	3.3%
Ferrous Metals	2.1%	2.5%	2.1%	3.1%	2.8%	1.4%
White Goods	0.3%	0.6%	0.2%			
Non-Ferrous Metals	0.2%	0.3%	0.3%	0.2%	0.3%	0.6%
Aerosol Cans		0.1%	0.2%	0.1%		
Glass	2.7%	2.7%	3.2%	2.2%	2.8%	2.5%
Clear Bottles	1.4%	1.4%	1.5%	1.0%	1.0%	0.9%
Brown Bottles	0.4%	0.4%	0.7%	0.5%	0.5%	0.5%
Green Bottles	0.3%	0.4%	0.4%	0.3%	0.3%	0.4%
Non-Recyclable Glass	0.6%	0.5%	0.5%	0.5%	0.9%	0.8%
Organic	28.9%	26.8%	26.3%	29.5%	17.7%	22.7%
Food Wastes	12.1%	11.9%	14.5%	15.3%	16.3%	20.4%
Yard Debris	5.8%	4.1%	3.3%	3.8%	1.5%	2.3%
Recoverable Wood	11.0%	10.8%	8.5%	10.4%	9.7%	9.8%
Other Materials	17.8%	19.8%	23.0%	15.5%	19.7%	21.2%
Construction/Demolition	8.4%	8.9%	7.4%	7.6%	6.0%	9.4%
Tires	0.1%	0.3%	0.3%			
Rubber Products	0.6%	0.2%	0.3%			
Disposable Diapers	2.1%	2.8%	3.1%			
Textiles	4.6%	5.7%	3.5%			
Carpet			2.8%	4.5%	1.9%	3.0%
Leather	0.0%	0.1%	0.1%			
Hazardous Waste	1.8%	1.5%	2.4%	1.2%	2.1%	0.2%
Medical Waste						0.0%
Animal Excrement						1.8%
Household Batteries						0.1%
E-Waste						0.1%
Fines			2.8%			
Ash	0.2%	0.3%	0.3%			
Reusable Products				2.2%		
Remaining Waste	8.0%	9.3%	5.7%	15.0%	21.6%	19.1%
	100.0%	100.0%	100.0%	100.0%	100.0%	99.9%