

# Chelatchie Prairie Rail Trail Study

## Options for First Phase Implementation

February 25, 2008

[www.altaplanning.com](http://www.altaplanning.com)

[stevedurrant@altaplanning.com](mailto:stevedurrant@altaplanning.com)

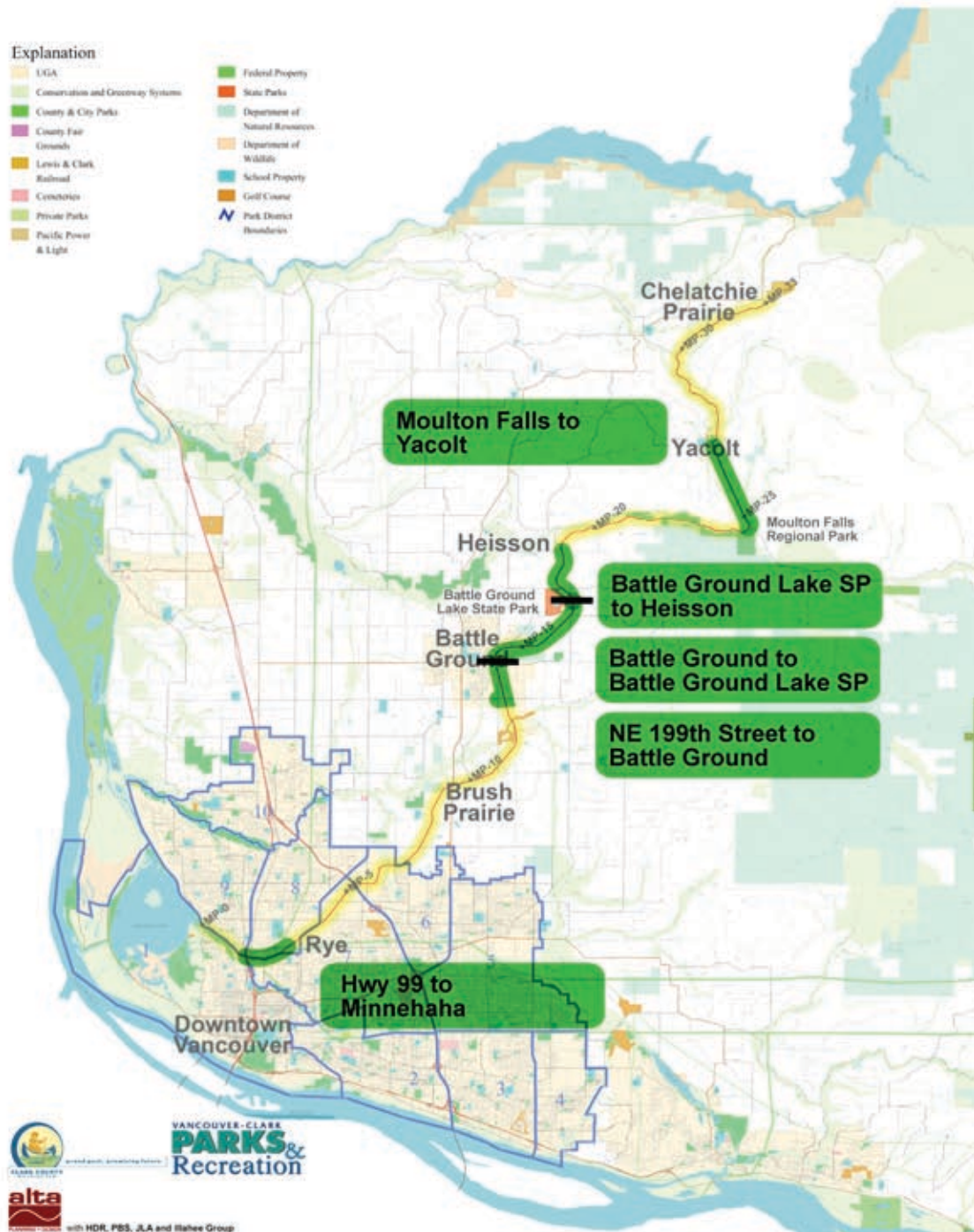
[hagenhammons@altaplanning.com](mailto:hagenhammons@altaplanning.com)



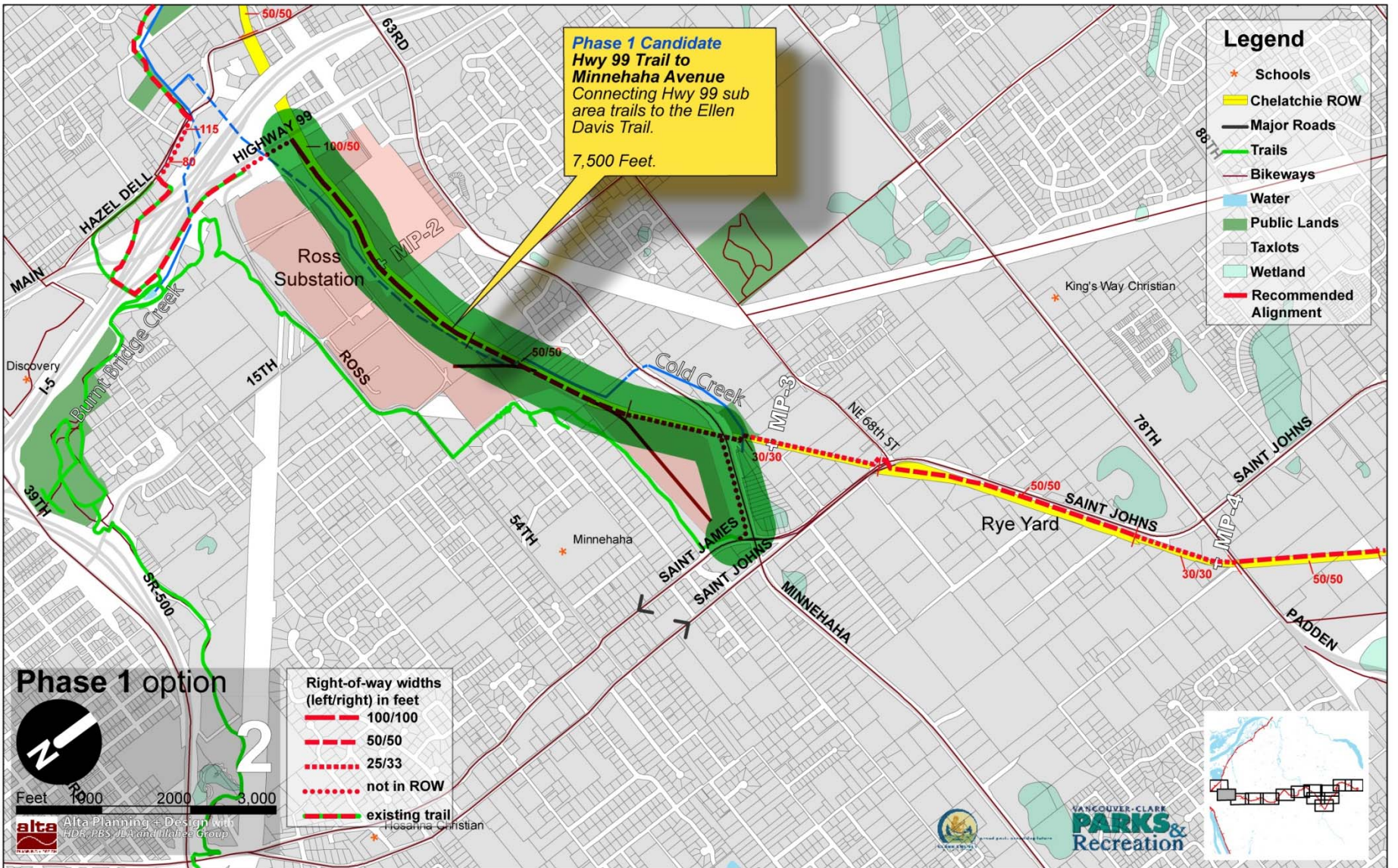
Portland – Berkeley – Los Angeles – Washington DC – New York – Bozeman

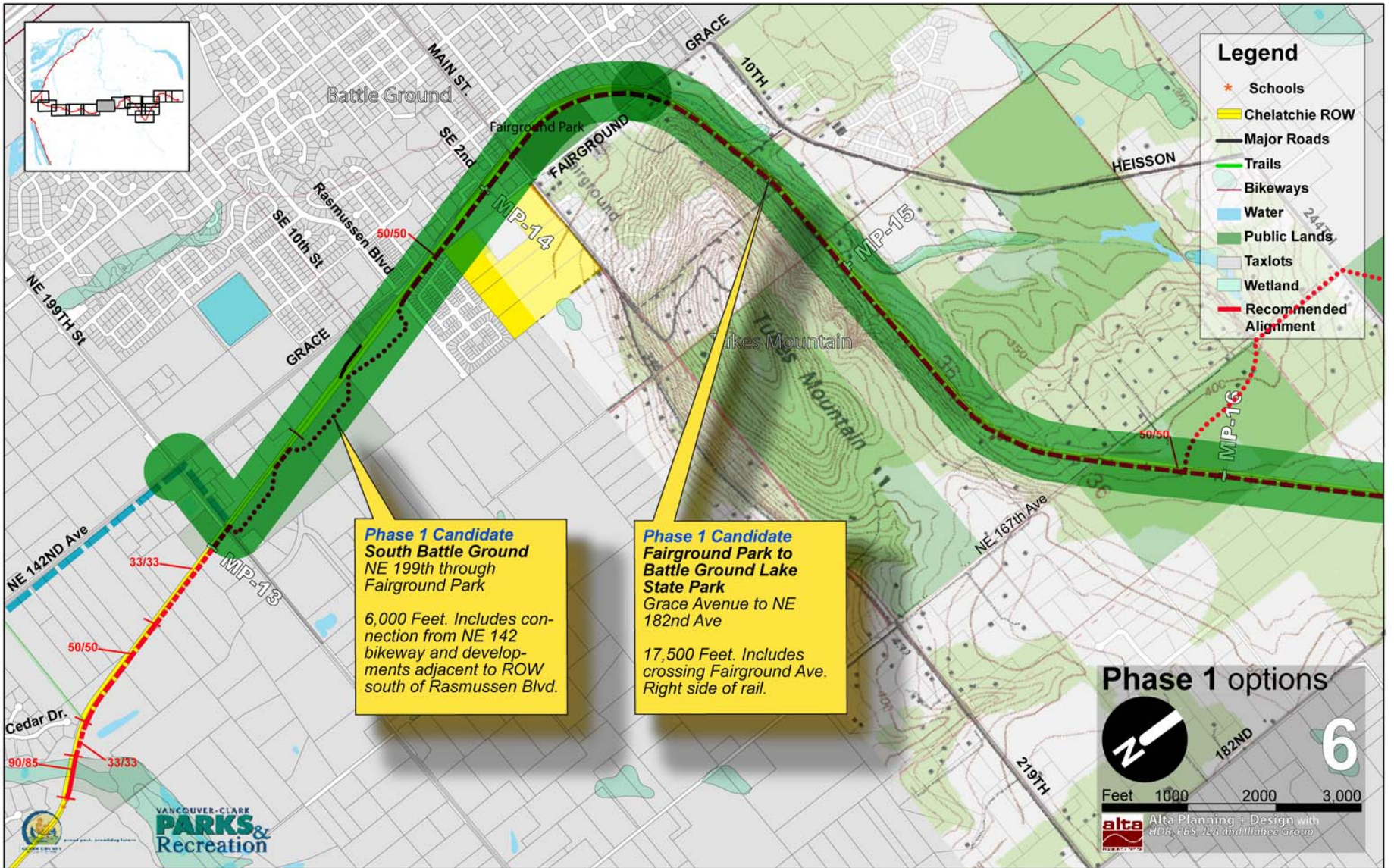
# DRAFT Phase I Options

Feb 2008



## Chelatchie Prairie Railroad Trail Study Corridor





- ### Legend
- \* Schools
  - Chelatchie ROW
  - Major Roads
  - Trails
  - Bikeways
  - Water
  - Public Lands
  - Taxlots
  - Wetland
  - Recommended Alignment

**Phase 1 Candidate**  
**South Battle Ground**  
 NE 199th through  
 Fairground Park

6,000 Feet. Includes connection from NE 142 bikeway and developments adjacent to ROW south of Rasmussen Blvd.

**Phase 1 Candidate**  
**Fairground Park to**  
**Battle Ground Lake**  
**State Park**  
 Grace Avenue to NE 182nd Ave

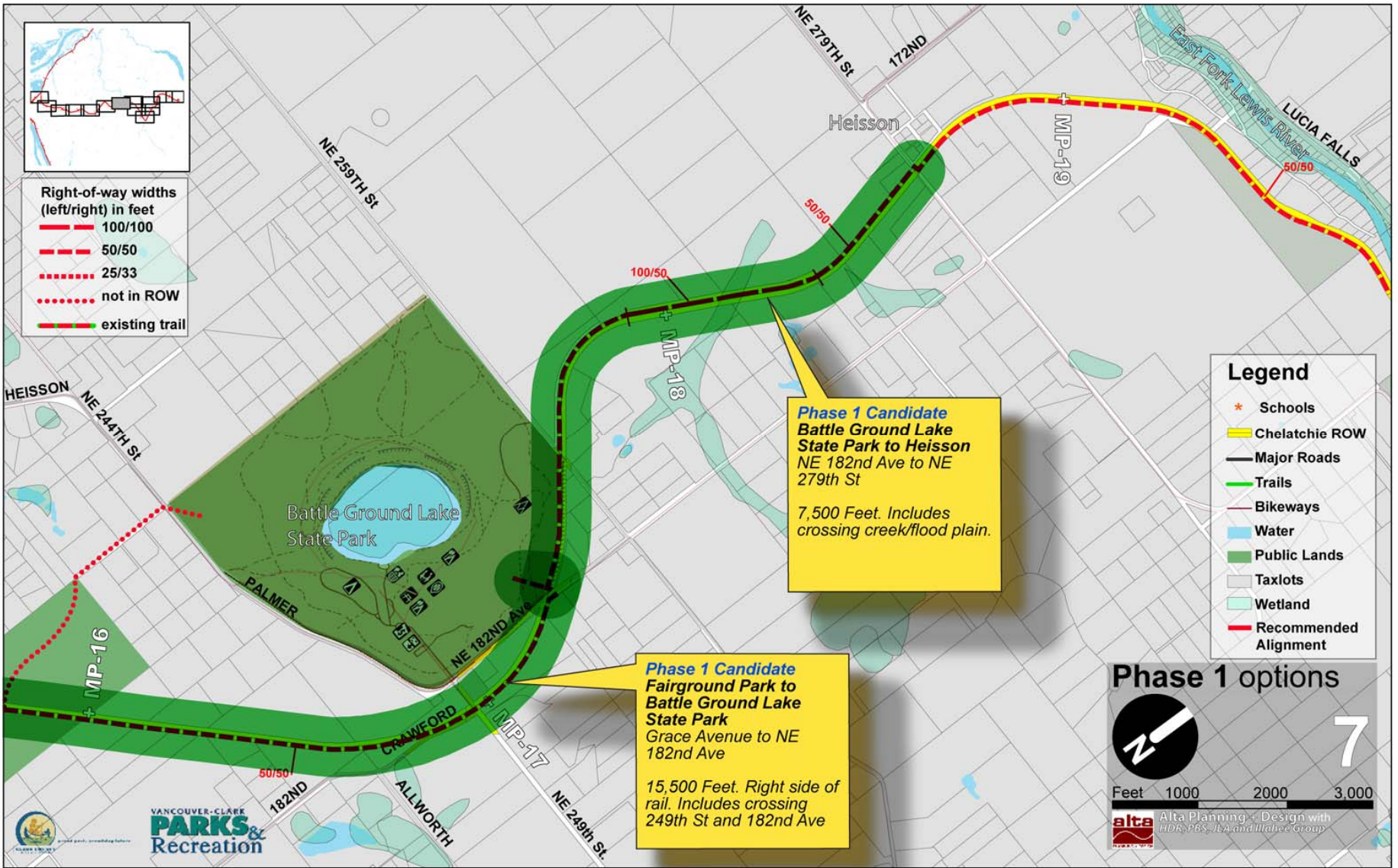
17,500 Feet. Includes crossing Fairground Ave. Right side of rail.

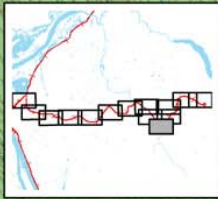
**Phase 1 options**

6

Feet 1000 2000 3,000

alta  
 Alta Planning + Design with  
 HDR, PBS, ILA and Illaltee Group





**Legend**

- Schools
- Chelatchie ROW
- Major Roads
- Trails
- Bikeways
- Water
- Public Lands
- Taxlots
- Wetland
- Recommended Alignment

Lucia Falls Regional Park

(50/50)  
+ MP-23

Yacolt Creek  
RAILROAD AVE.  
+ MP-26

**Phase 1 Candidate**  
Moulton Falls Regional Park to Yacolt  
From trail crossing near Sunset Falls Rd to Yacolt train station.  
13,500 Feet.

+ MP-24

MP-25

Yacolt Burn State Forest

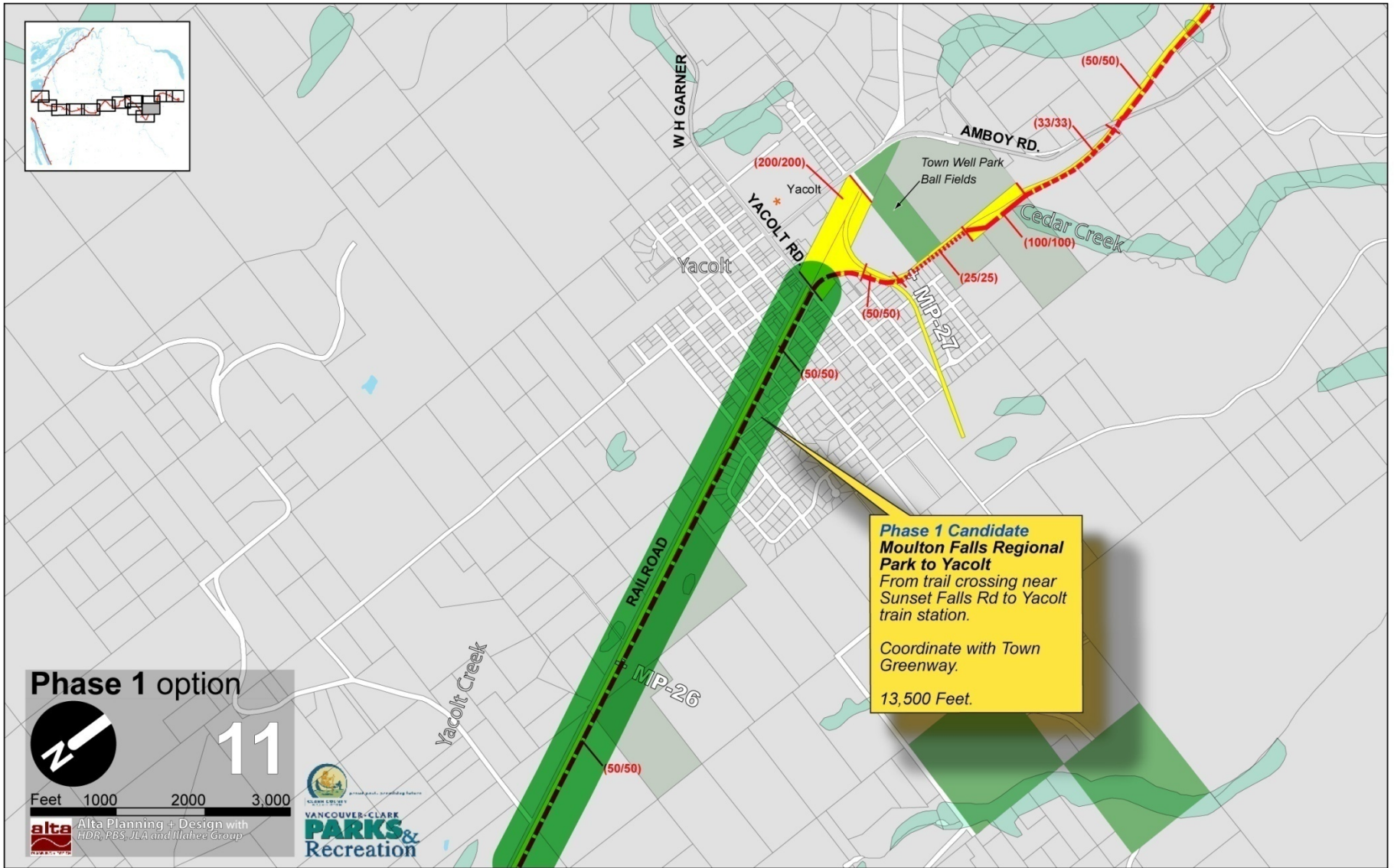
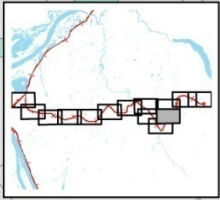
VANCOUVER-CLARE  
**PARKS & Recreation**

**Phase 1 option**

**10**

Feet 1000 2000 3000

Alta Planning + Design with HDR, PBS, JLA and Illahee Group



**Phase 1 option**

**11**

Feet 1000 2000 3,000

**alta** Alta Planning + Design with HDR, PBS, JLA and Illahee Group



**Phase 1 Candidate**  
**Moulton Falls Regional**  
**Park to Yacolt**  
 From trail crossing near  
 Sunset Falls Rd to Yacolt  
 train station.

Coordinate with Town  
 Greenway.

13,500 Feet.