

# Chelatchie Prairie Rail Trail Study

## Recommended Alignment

February 25, 2008

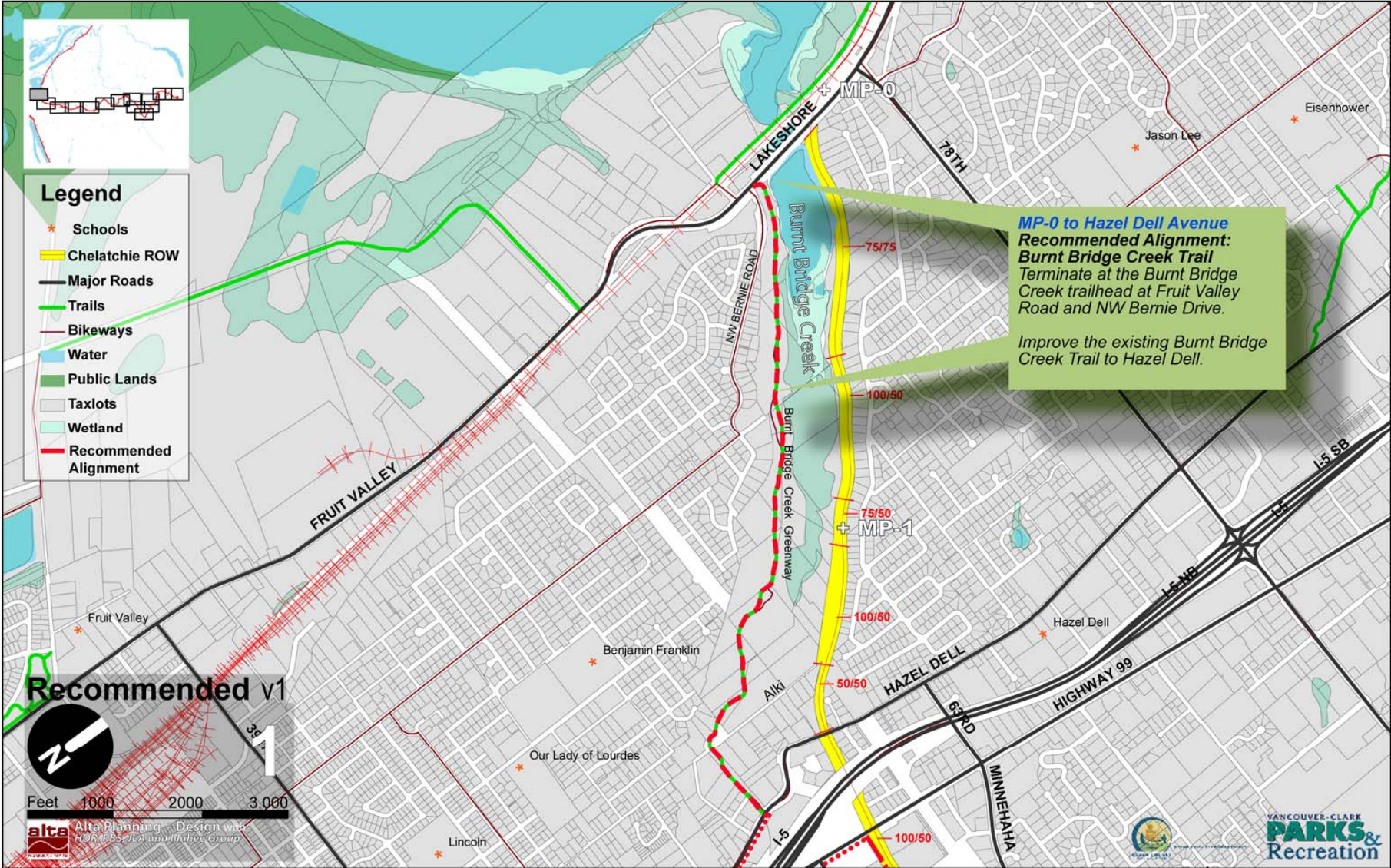
[www.altaplanning.com](http://www.altaplanning.com)

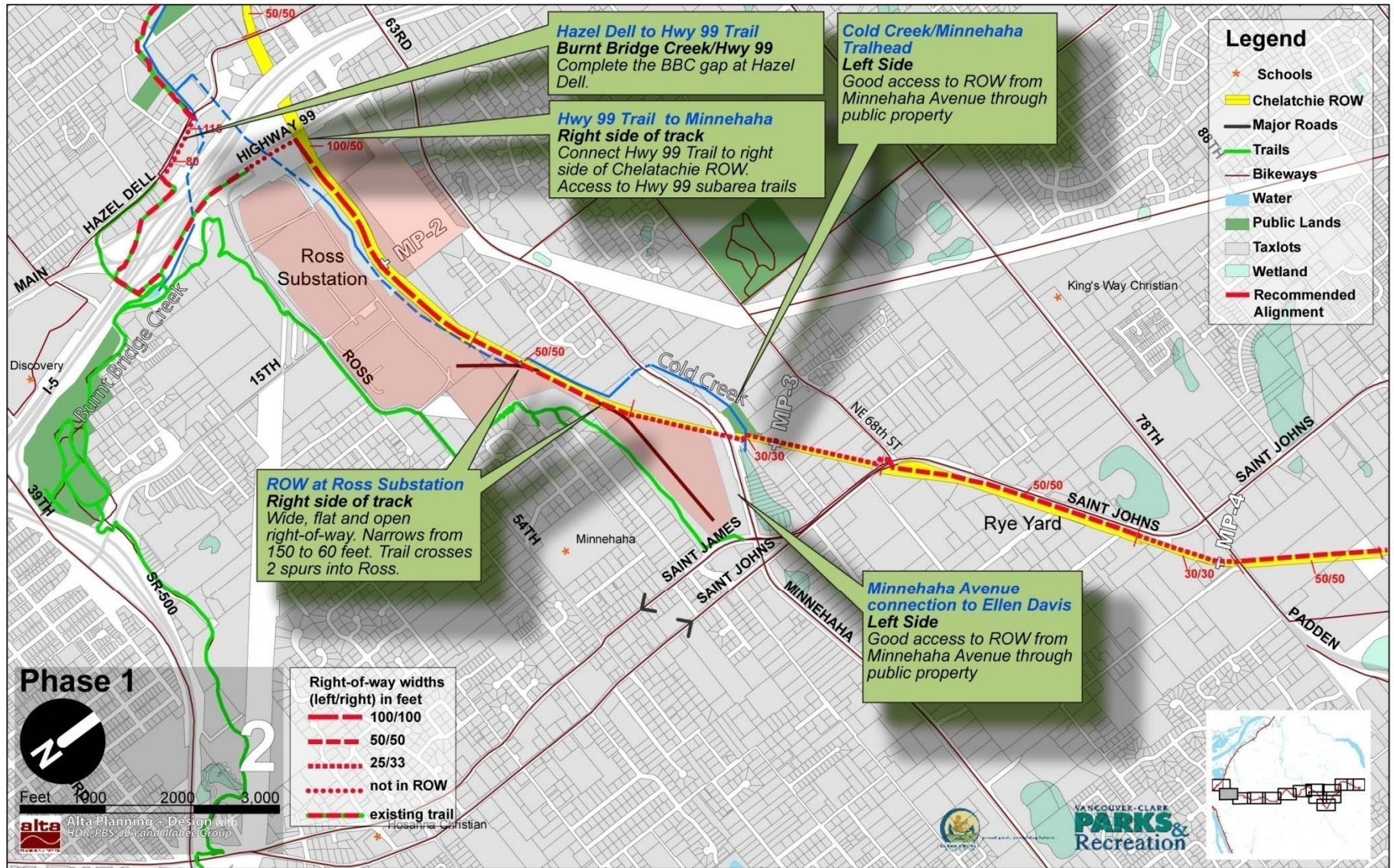
[stevedurrant@altaplanning.com](mailto:stevedurrant@altaplanning.com)

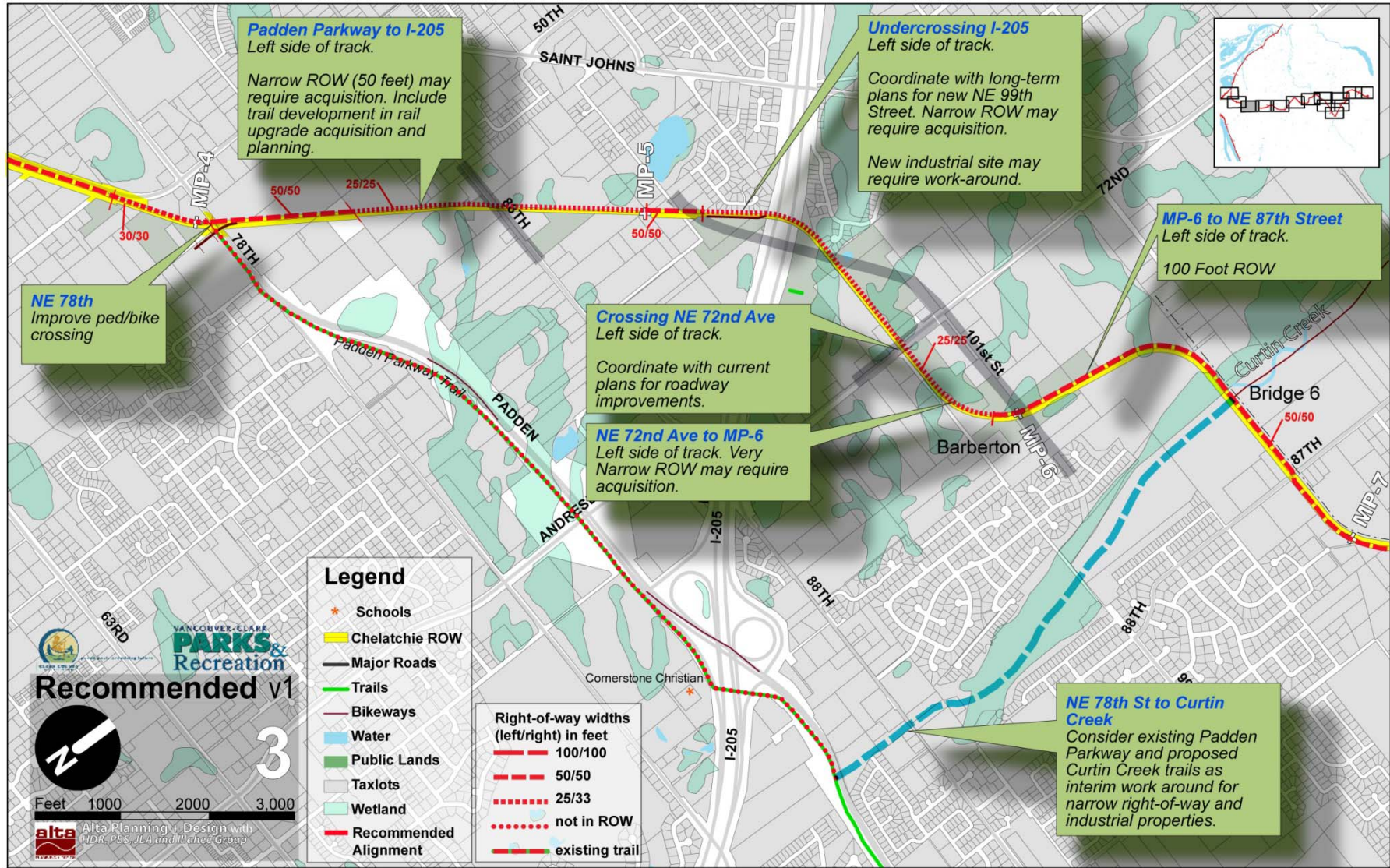
[hagenhammons@altaplanning.com](mailto:hagenhammons@altaplanning.com)



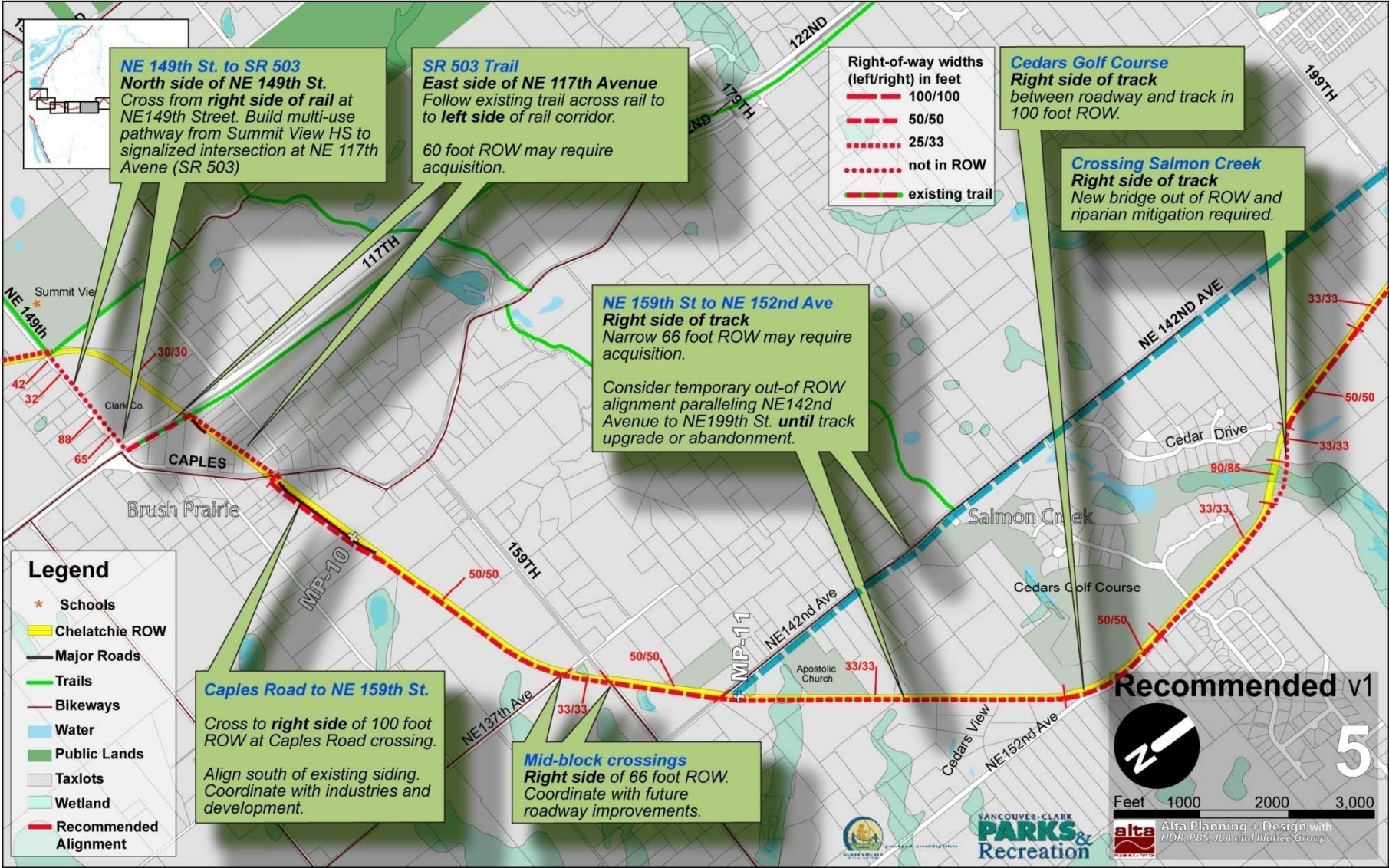
Portland – Berkeley – Los Angeles – Washington DC – New York – Bozeman

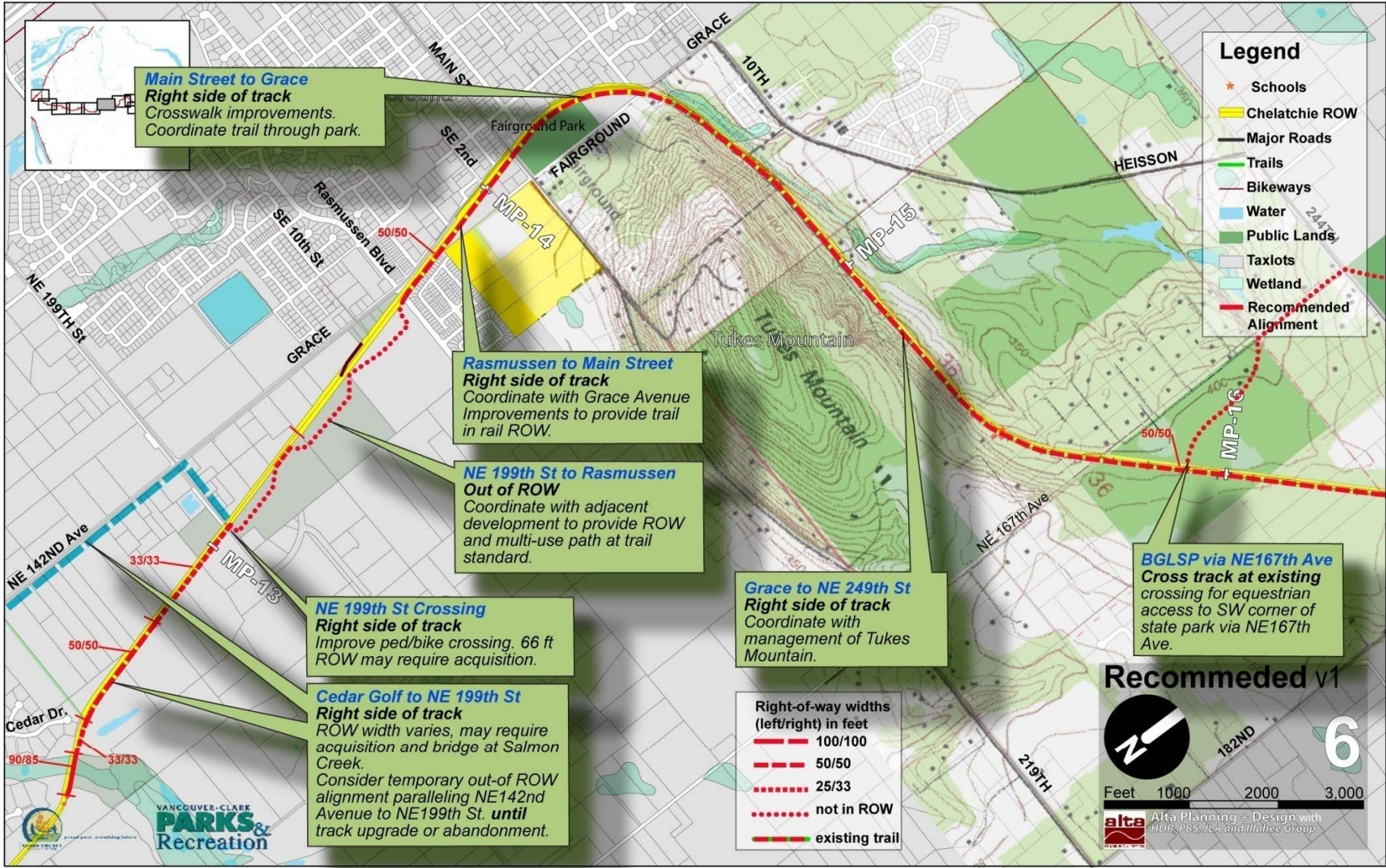












**Main Street to Grace**  
**Right side of track**  
 Crosswalk improvements.  
 Coordinate trail through park.

**Rasmussen to Main Street**  
**Right side of track**  
 Coordinate with Grace Avenue  
 Improvements to provide trail  
 in rail ROW.

**NE 199th St to Rasmussen**  
**Out of ROW**  
 Coordinate with adjacent  
 development to provide ROW  
 and multi-use path at trail  
 standard.

**NE 199th St Crossing**  
**Right side of track**  
 Improve ped/bike crossing. 66 ft  
 ROW may require acquisition.

**Cedar Golf to NE 199th St**  
**Right side of track**  
 ROW width varies, may require  
 acquisition and bridge at Salmon  
 Creek.  
 Consider temporary out-of ROW  
 alignment paralleling NE142nd  
 Avenue to NE199th St. **until**  
 track upgrade or abandonment.

**Grace to NE 249th St**  
**Right side of track**  
 Coordinate with  
 management of Tukes  
 Mountain.

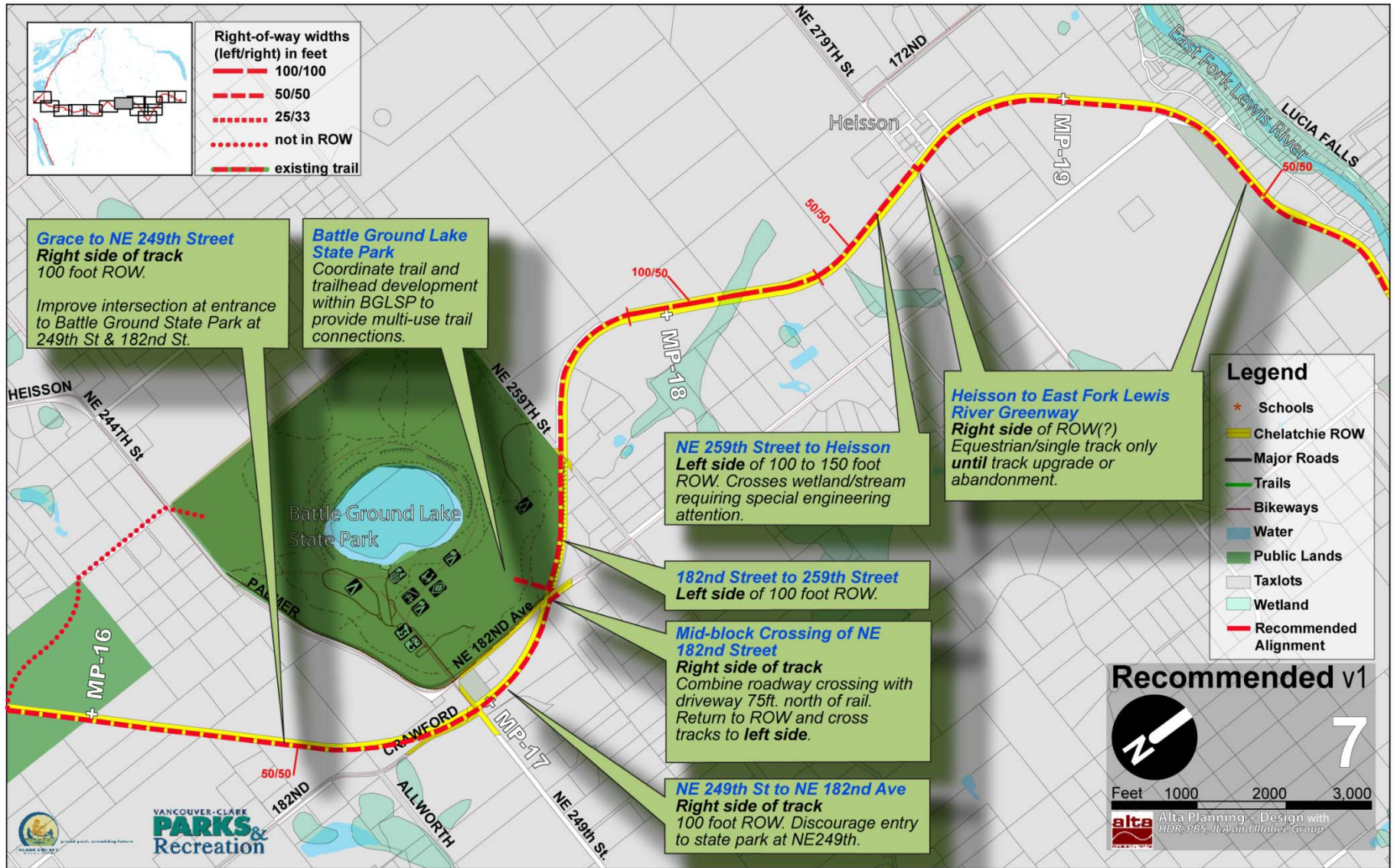
**BGLSP via NE167th Ave**  
**Cross track at existing**  
 crossing for equestrian  
 access to SW corner of  
 state park via NE167th  
 Ave.

- Legend**
- \* Schools
  - Chelatchie ROW
  - Major Roads
  - Trails
  - Bikeways
  - Water
  - Public Lands
  - Taxlots
  - Wetland
  - Recommended Alignment

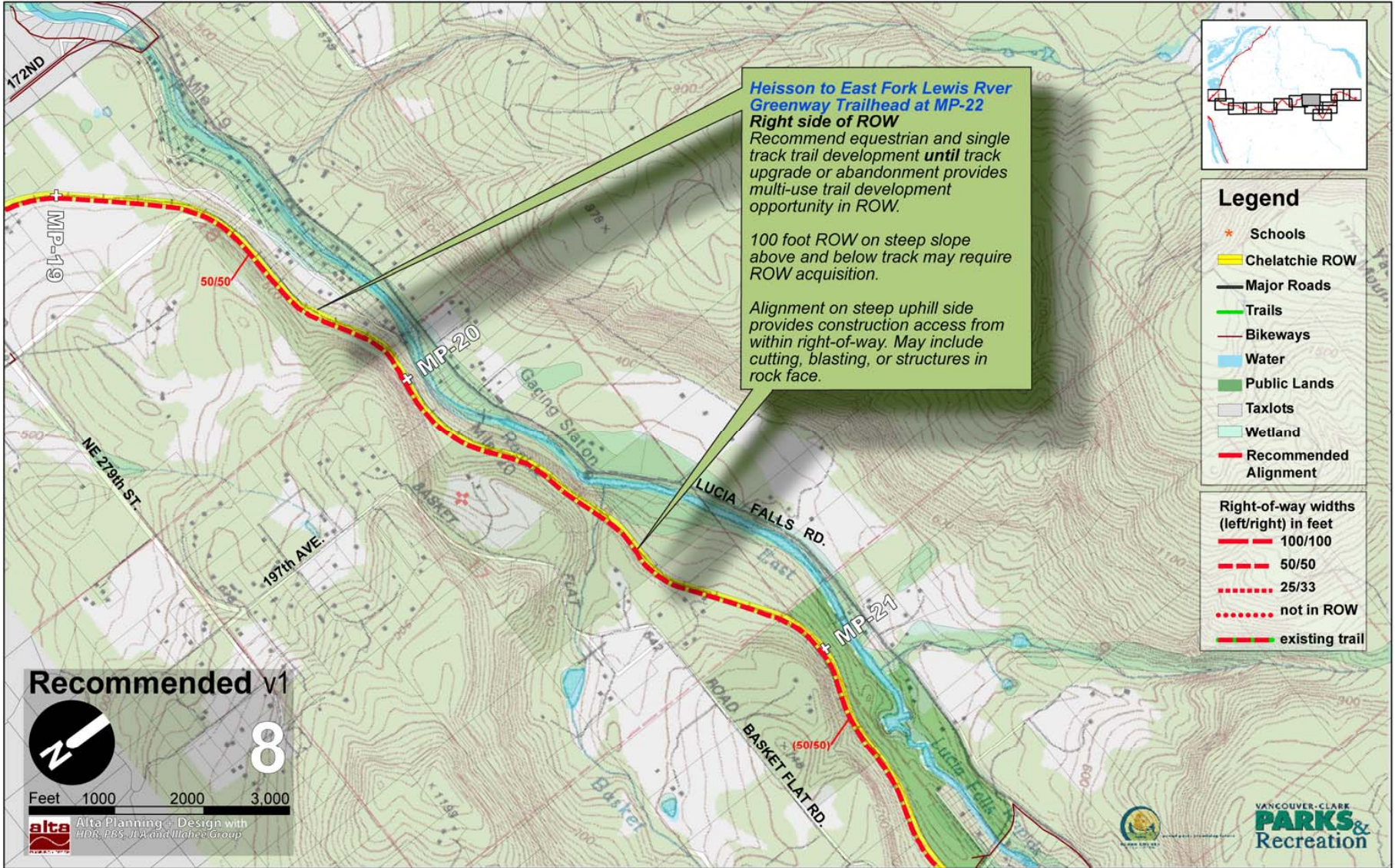
- Right-of-way widths (left/right) in feet**
- 100/100
  - 50/50
  - 25/33
  - not in ROW
  - existing trail

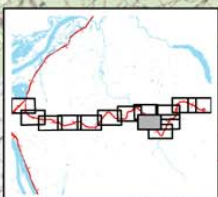


alta  
 Alta Planning + Design with  
 HDB, PBS, JLA and Illahee Group









### Legend

- Schools
- Chelatchie ROW
- Major Roads
- Trails
- Bikeways
- Water
- Public Lands
- Taxlots
- Wetland
- Recommended Alignment

**Heisson to Hantwick Road, MP-22**  
**Right side of ROW**  
 Recommend equestrian and single track trail development **until** track upgrade or abandonment provides multi-use trail development opportunity in ROW.  
 100 foot ROW on steep slope above and below track may require ROW acquisition.  
 Alignment on steep uphill side provides construction access from within right-of-way. May include cutting, blasting, or structures in rock face.

**East Fork Lewis River Greenway Trailhead (MP-22) to Moulton Falls County Park**  
**East Fork Lewis River Greenway Trail**  
 Use existing 10' paved trail from trailhead. Improve soft surface trail east of approx MP23.

**Recommended v1**

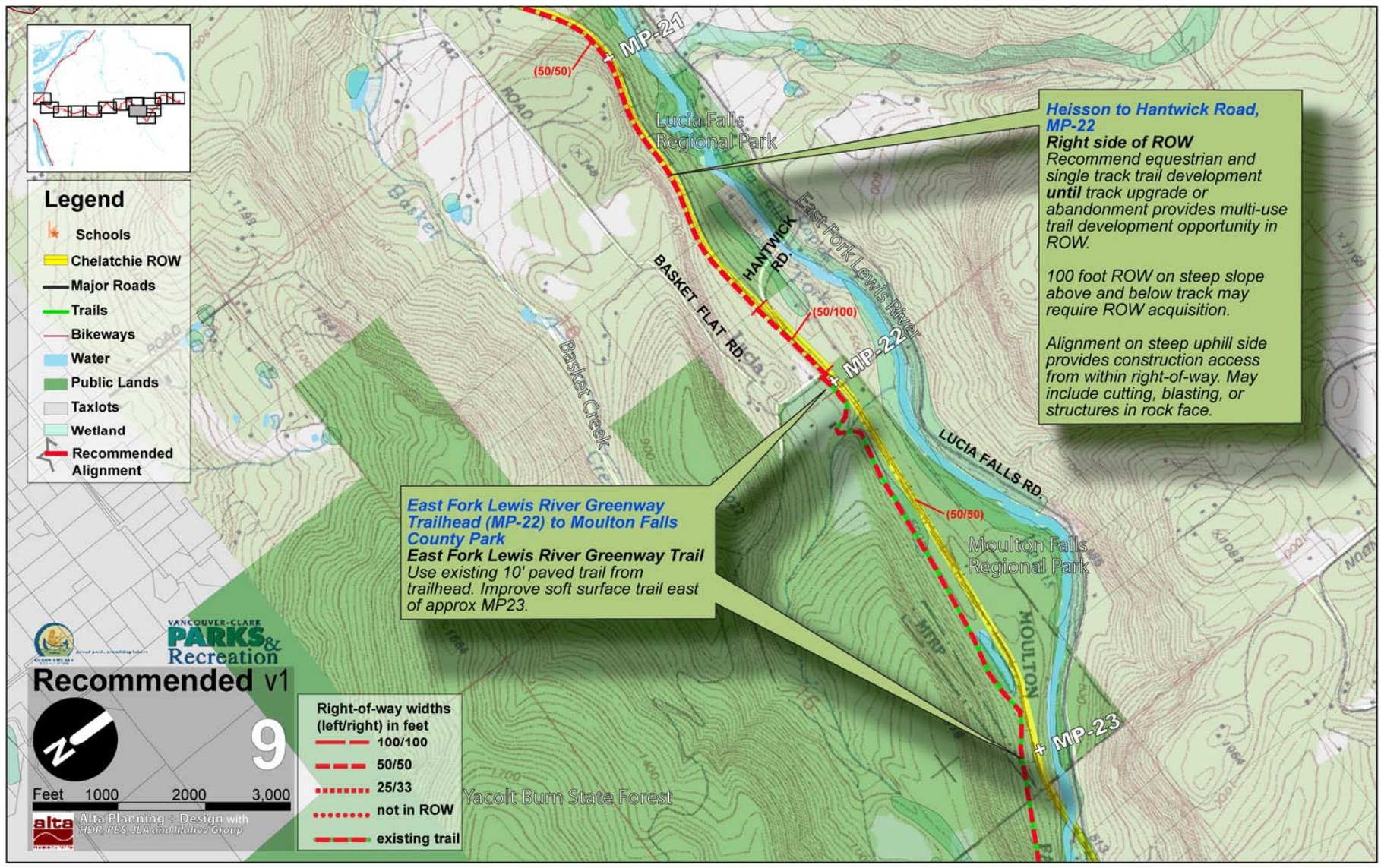
**9**

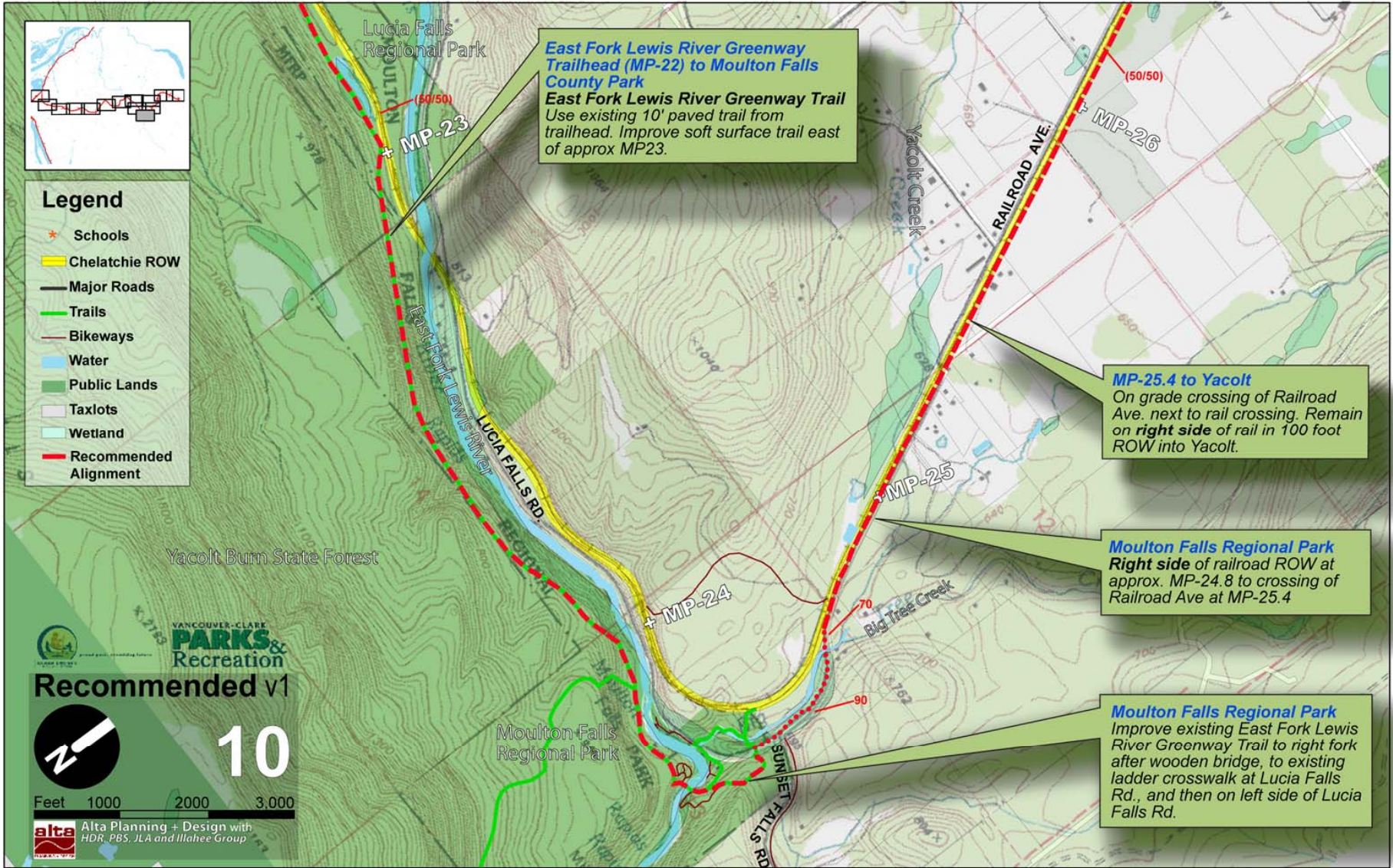
Feet 1000 2000 3,000

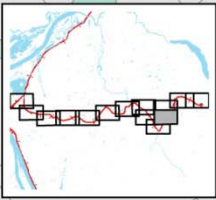
Alta Planning + Design with HDR, PBS, JLA and Mahee Group

**Right-of-way widths (left/right) in feet**

- 100/100
- 50/50
- 25/33
- not in ROW
- existing trail







### Legend

- \* Schools
- Chelatchie ROW
- Major Roads
- Trails
- Bikeways
- Water
- Public Lands
- Taxlots
- Wetland
- Recommended Alignment

- Right-of-way widths (left/right) in feet
- 100/100
  - 50/50
  - 25/33
  - not in ROW
  - existing trail

### Recommended v1

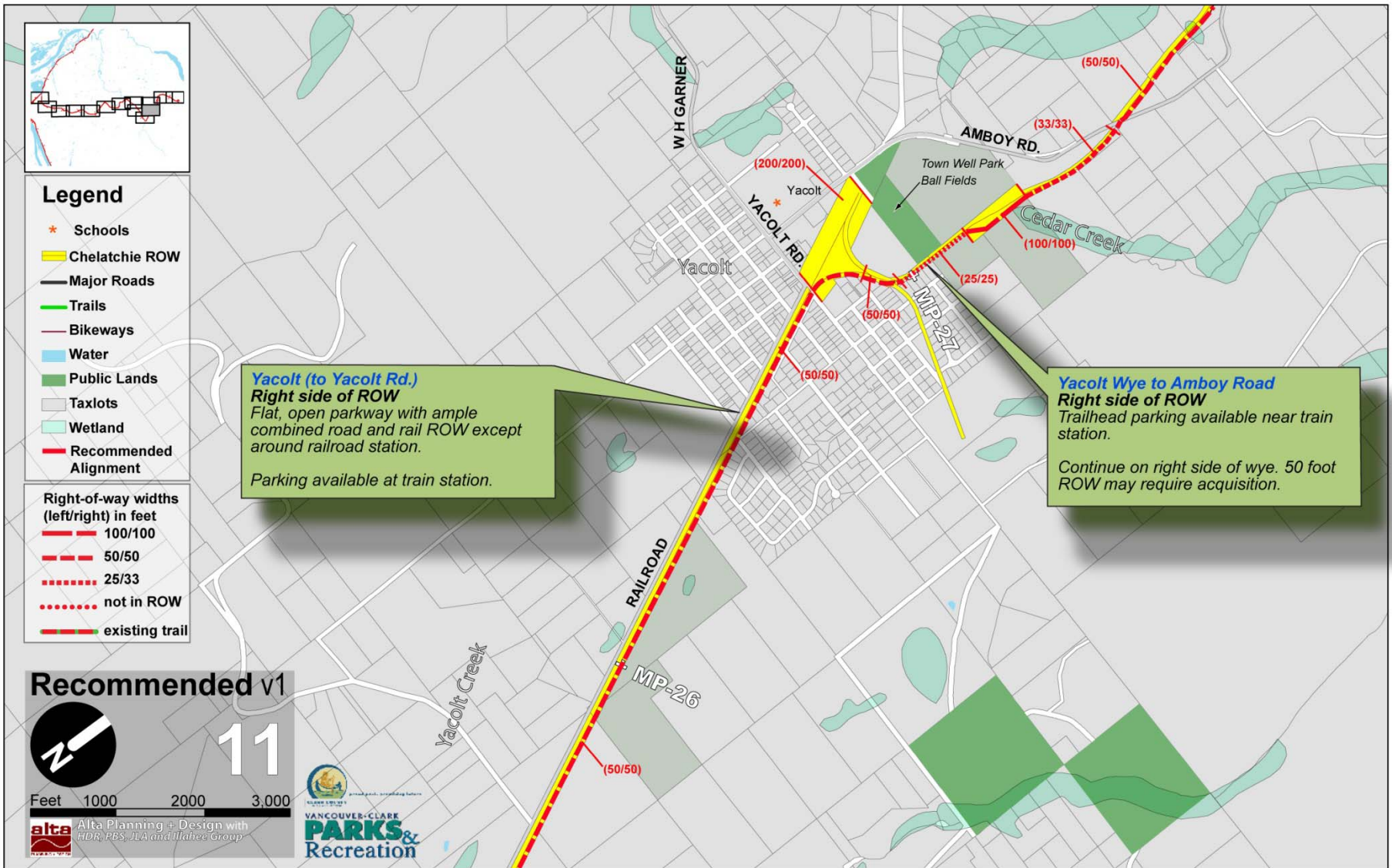
11

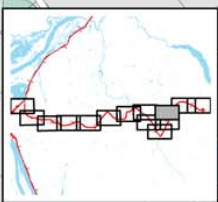
Feet 1000 2000 3,000

Alta Planning + Design with HDR, PBS, JLA and Illabe Group

**Yacolt (to Yacolt Rd.)**  
**Right side of ROW**  
 Flat, open parkway with ample combined road and rail ROW except around railroad station.  
 Parking available at train station.

**Yacolt Wye to Amboy Road**  
**Right side of ROW**  
 Trailhead parking available near train station.  
 Continue on right side of wye. 50 foot ROW may require acquisition.





### Legend

- ★ Schools
- Chelatchie ROW
- Major Roads
- Trails
- Bikeways
- Water
- Public Lands
- Taxlots
- Wetland
- Recommended Alignment

- Right-of-way widths (left/right) in feet
- 100/100
  - 50/50
  - 25/33
  - not in ROW
  - existing trail

### Recommended v1



Alta Planning + Design with HDR, PBS, UJA and Illabe Group

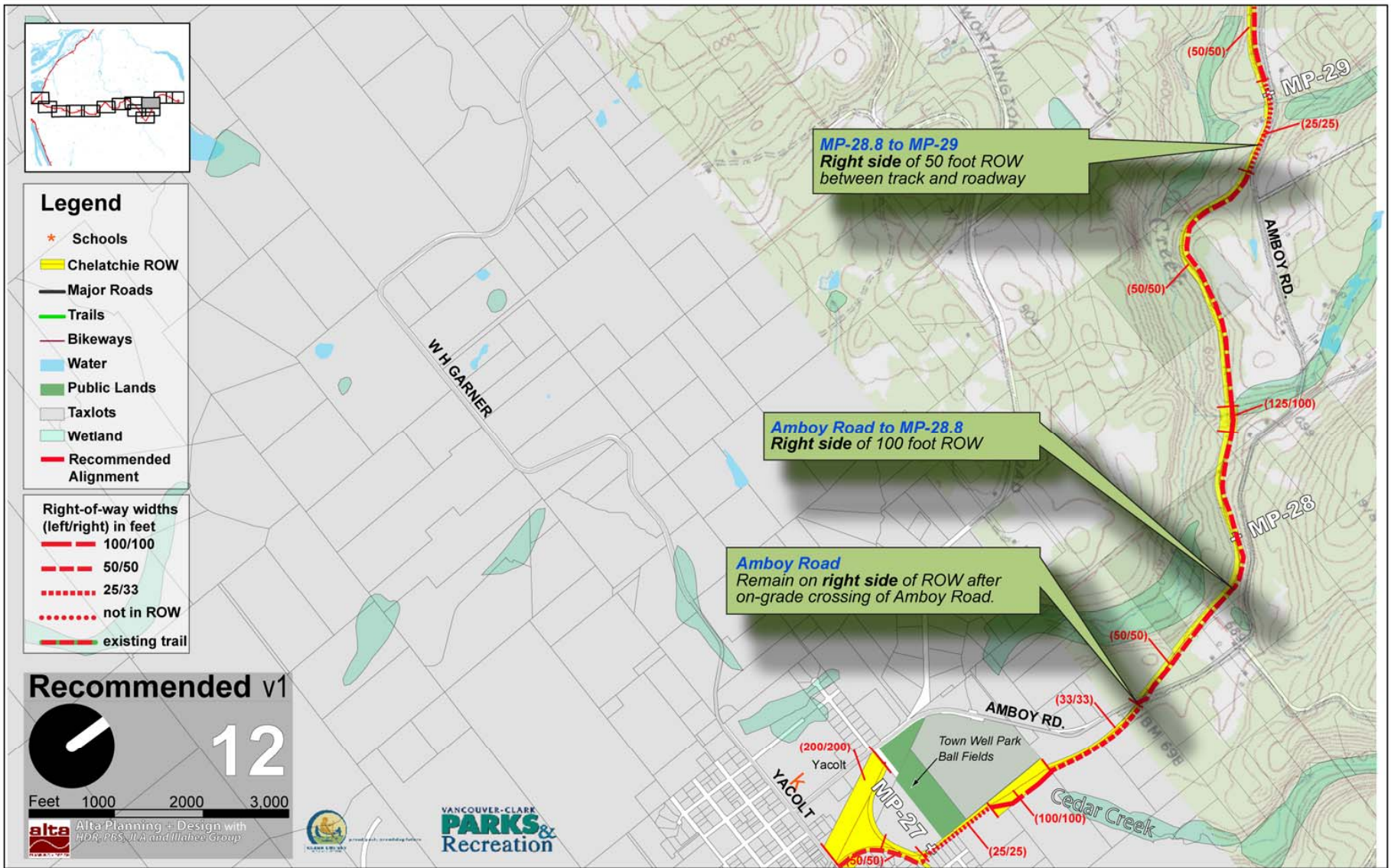


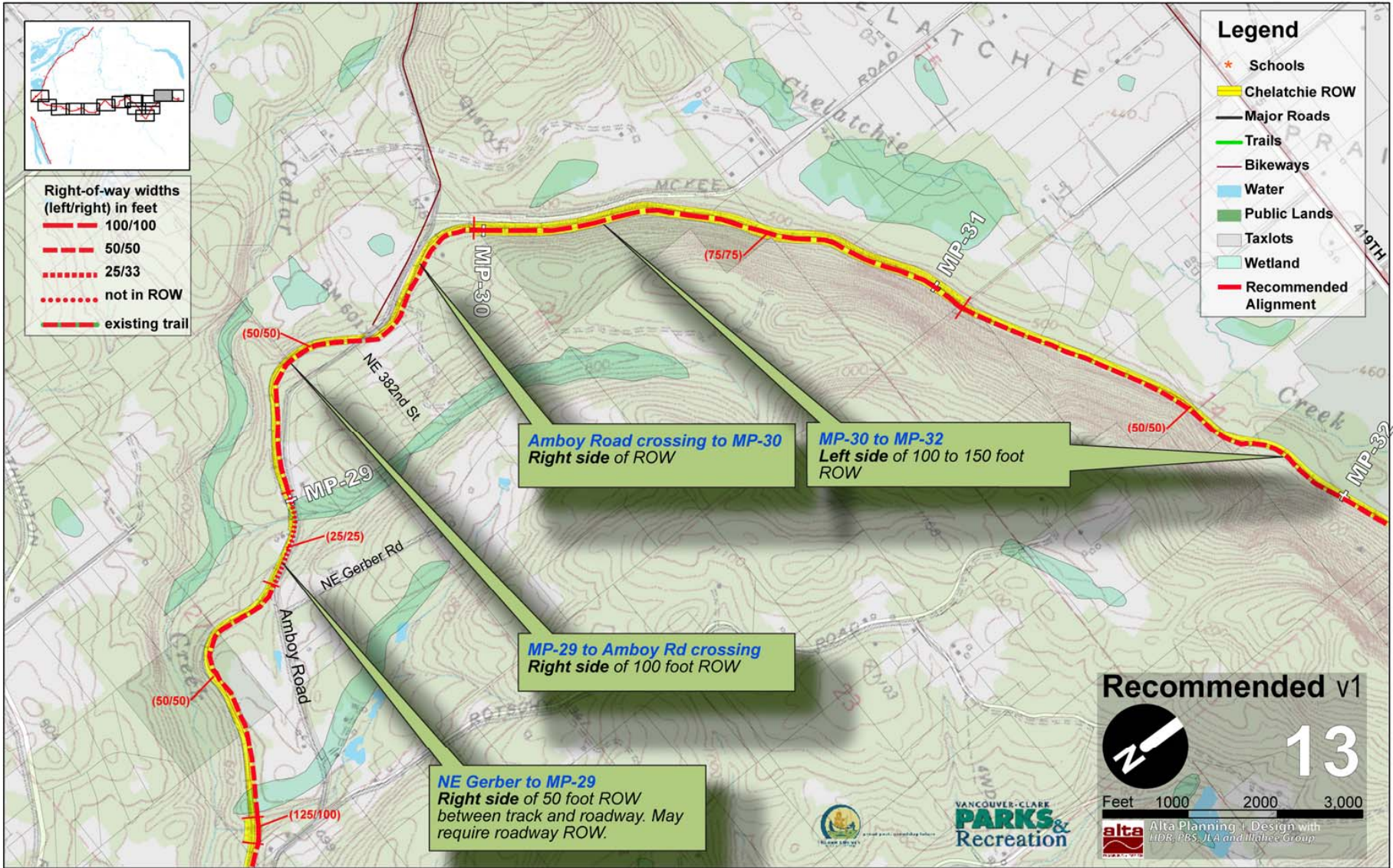
VANCOUVER-CLARK  
**PARKS & Recreation**

**MP-28.8 to MP-29**  
Right side of 50 foot ROW  
between track and roadway

**Amboy Road to MP-28.8**  
Right side of 100 foot ROW

**Amboy Road**  
Remain on **right side** of ROW after  
on-grade crossing of Amboy Road.

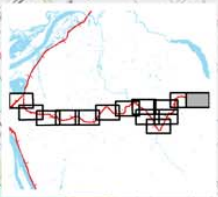






Right-of-way widths (left/right) in feet

- 100/100
- 50/50
- 25/33
- not in ROW
- existing trail



- Legend**
- Schools
  - Chelatchie ROW
  - Major Roads
  - Trails
  - Bikeways
  - Water
  - Public Lands
  - Taxlots
  - Wetland
  - Recommended Alignment

# Recommended v1 14

Feet 1000 2000 3,000

Alta Planning + Design with HDR, PBS, JLA and Wallace Group

**MP-32 to Yale Bridge Road**  
Right side of 100 foot ROW to on-grade crossing at extension of Yale Bridge Road.

**Exit to Yale Bridge Road**  
Exit rail corridor at extension of Yale Bridge Road.

**Yale Bridge Road to End of Line**  
Right side of rail. Acquisition required at 50 foot ROW.

**Connection to Yale Reservoir**  
Connection via Belvins Road to rural road and logging road network.

