

Public Health COVID-19 update

Alan Melnick, MD, MPH, CPH

Board of Health

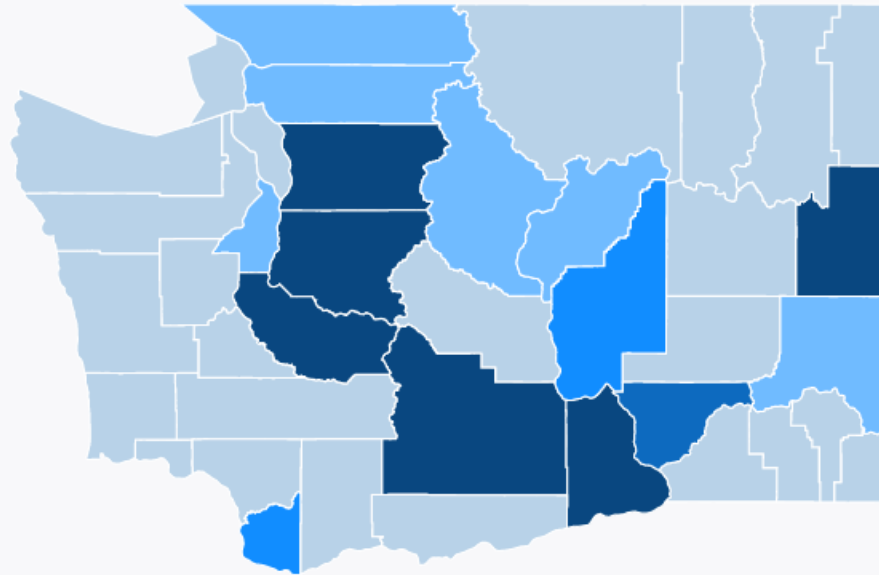
Sept. 23, 2020



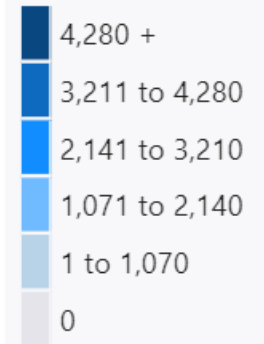
Washington state

Confirmed Cases	82,548
Hospitalizations	7,262
Deaths	2,037
Percent of Deaths (deaths/confirmed cases)	2.5%
Total Tests	1,736,556

Confirmed Cases by County



Legend



Please click "Learn More" for more information.

299 of 82,548 confirmed cases do not have an assigned county

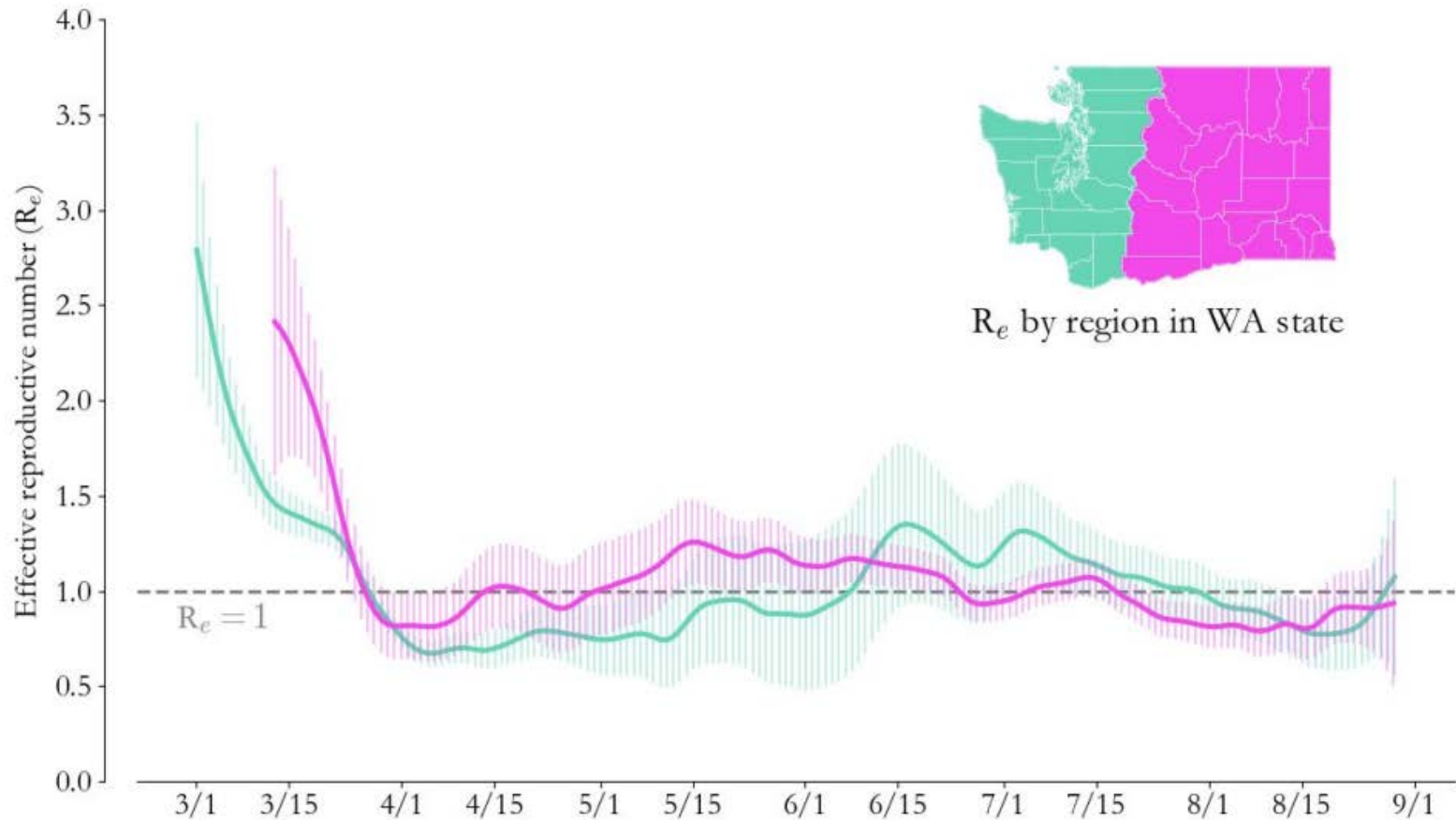


Washington state

- Latest state situation report issued Sept. 20 shows an overall case decline in western Washington and overall plateau in eastern Washington.
 - R_e (reproductive number) estimates:
 - Western Washington: 1.07
 - Eastern Washington: 0.94
- Western Washington cases continue to decrease but decrease is not uniform across regions.
 - Decrease has slowed or stopped in some areas (Clark, Pierce, Snohomish and Whatcom counties) or reversed (Lewis County).
 - Moderate increases in cases among people ages 0-17 and 25-39.
- Eastern Washington decrease has plateaued, mostly due to increases in Whitman County (cases primarily in college-age individuals).
- Overall population susceptibility remains high.



Reproductive number



Institute for Disease Modeling



Clark County

Number of positive cases	3,206
Number of active cases	163
Number of deaths	54
Rate per 100,000	76.15

Active cases: Number of active cases reflects the number of confirmed cases currently in their isolation period. Confirmed cases remain in isolation until they are fever-free for at least 24 hours (without fever-reducing medication) and symptoms have improved and at least 10 days have passed since symptoms began.



Clark County cases by verification date

Monday, Sept. 7	18
Tuesday, Sept. 8	20
Wednesday, Sept. 9	31
Thursday, Sept. 10	40
Friday, Sept. 11	24
Saturday, Sept. 12	34
Sunday, Sept. 13	20

Monday, Sept. 14	37
Tuesday, Sept. 15	21
Wednesday, Sept. 16	28
Thursday, Sept. 17	23
Friday, Sept. 18	46
Saturday, Sept. 19	28
Sunday, Sept. 20	19
Monday, Sept. 21	37



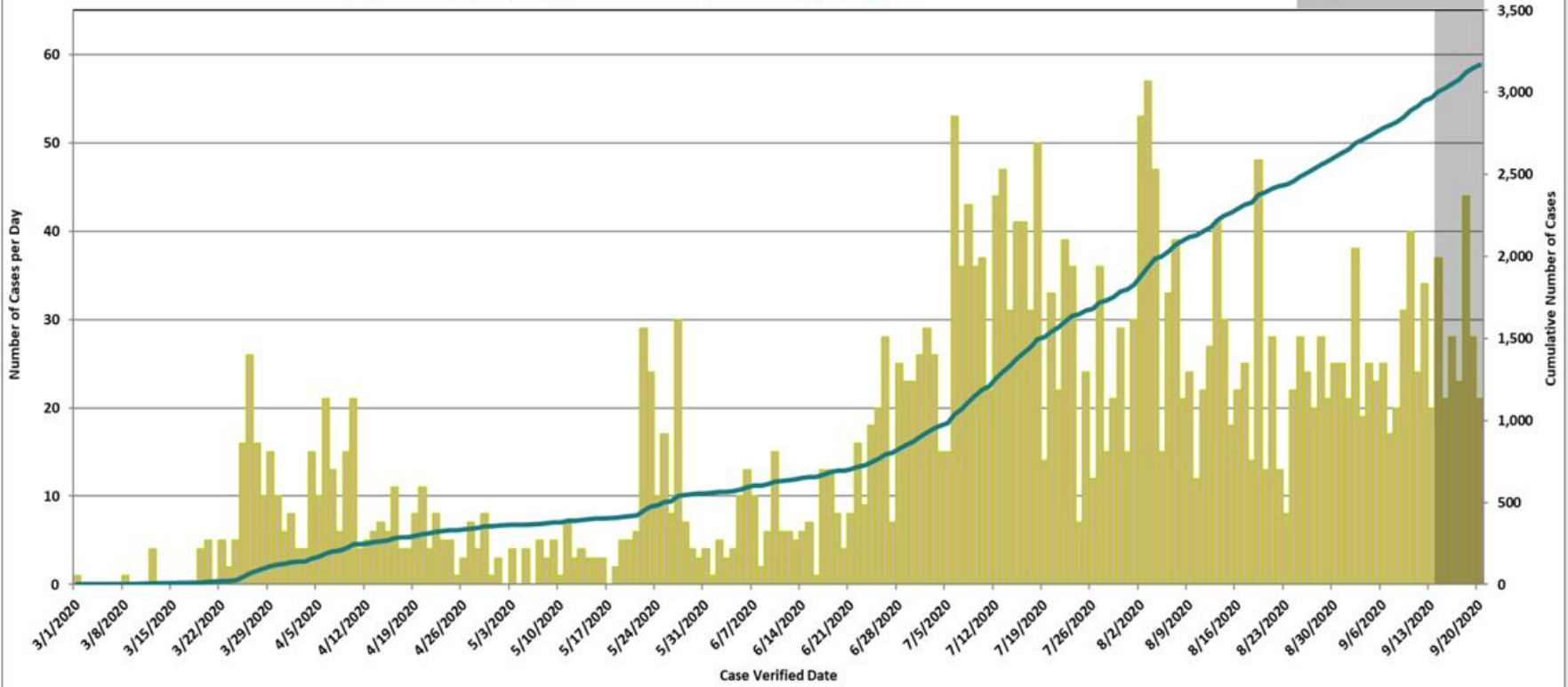
Clark County

Clark County Confirmed COVID-19 Cases, by Case Verified Date

The "cumulative" line gives us an indication of how fast we are identifying new cases; the sharper the upward slope, the more new cases are being reported. A plateau or more gradual slope in this line shows that we are identifying fewer cases each day, or successfully "flattening the curve".

Number of Cases
Cumulative Number of Cases

Data in the past week may change due to delays in confirming test results



Chiro One outbreak

- Case total, as of Tuesday: 3 cases (all employees)
- First case, an employee, tested positive on Sunday, Sept. 13.
 - Attempted to contact case Sunday. Investigation began Monday.
- Through case interview, Public Health learned of a large exposure at Chiro One in Salmon Creek over four days (Sept. 8-11).
 - Nearly 300 patients and 14 employees potentially exposed
 - Worked with Chiro One to get names and phone numbers of all contacts
- Public Health Institute brought in additional staff and began calling close contacts Wednesday evening (Sept. 16).
- Public Health issued a news release on Wednesday, Sept. 16, urging all patients at Chiro One during exposure period to quarantine immediately and not wait for a call from Public Health.



Chiro One outbreak

- Two additional employees tested positive Thursday, Sept. 17.
- Through case interviews, Public Health identified Monday, Sept. 14 as another date of possible exposure at Chiro One Wellness Center.
 - About 30 additional patients potentially exposed.
 - Extended the quarantine period for some patients previously identified as close contacts during the Sept. 8-11 exposure timeframe.
- Public Health Institute notified close contacts of their exposure.
- In total, 339 close contacts identified at Chiro One Wellness Center with possible exposures Sept. 8-11 and Sept. 14.



Phase 3 metrics

	Metric	Target	Clark County – Phase 3 application	Clark County - current
COVID-19 activity	Incidence of new cases reported during prior two weeks (measured by specimen collection date, and to account for the lag in reporting, the two week period starts 6 days prior to the current date)	Target: <25 cases / 100,000 / 14 days	19.45	76.15 (Sept. 2-15) not meeting target
	Trends in hospitalizations for lab-confirmed COVID-19	Target: flat or decreasing	flat	increasing not meeting target
	Reproductive rate (if available)	Target: $Re < 1$	n/a	n/a



Closer look: hospitalization trends

Date	COVID-19 confirmed hospitalizations	COVID-19 PUI hospitalized	Percent of beds occupied by COVID confirmed and PUI patients
Sept. 7	23	4	4.3%
Sept. 8	23	13	5.7%
Sept. 9	21	7	4.5%
Sept. 10	18	10	4.5%
Sept. 11	15	5	3.2%
Sept. 12	19	9	4.5%
Sept. 13	19	5	3.8%
Sept. 14	22	6	4.5%
Sept. 15	22	9	4.9%
Sept. 16	24	13	5.9%
Sept. 17	25	9	5.4%
Sept. 18	27	3	4.8%
Sept. 19	26	12	6.1%
Sept. 20	26	12	6.1%



Phase 3 metrics

	Metric	Target	Clark County – Phase 3 application	Clark County - current
Healthcare system readiness	% licensed beds occupied by patients (i.e., hospital census relative to licensed beds)	Target: Green: < 80% (Yellow: 81-90%; Red: >90%)	Green (64.9%)	Green (70.2%) meeting target
	% licensed beds occupied by suspected and confirmed COVID-19 cases	Target: Green: < 10% (Yellow: 11-20%; Red: >20%)	Green (3.4%)	Green (6.1%) meeting target



Phase 3 metrics

	Metric	Target	Clark County – Phase 3 application	Clark County - current
Testing	Average number of tests performed per day during the past week (or average % tests positive for COVID-19 during the past week)	Target: 50 times the number of cases (or 2%)	Average 417 tests per day 1.85% positivity (June 14-20)	Average 574 tests per day 5.12% positivity (Aug. 30-Sept.) not meeting target
	Median time from symptom onset to specimen collection among cases during the past week	Target: median <2 days	2 days (June 14-20); 3 days (June 21-25)	2 days (Sept. 13-19) not meeting target

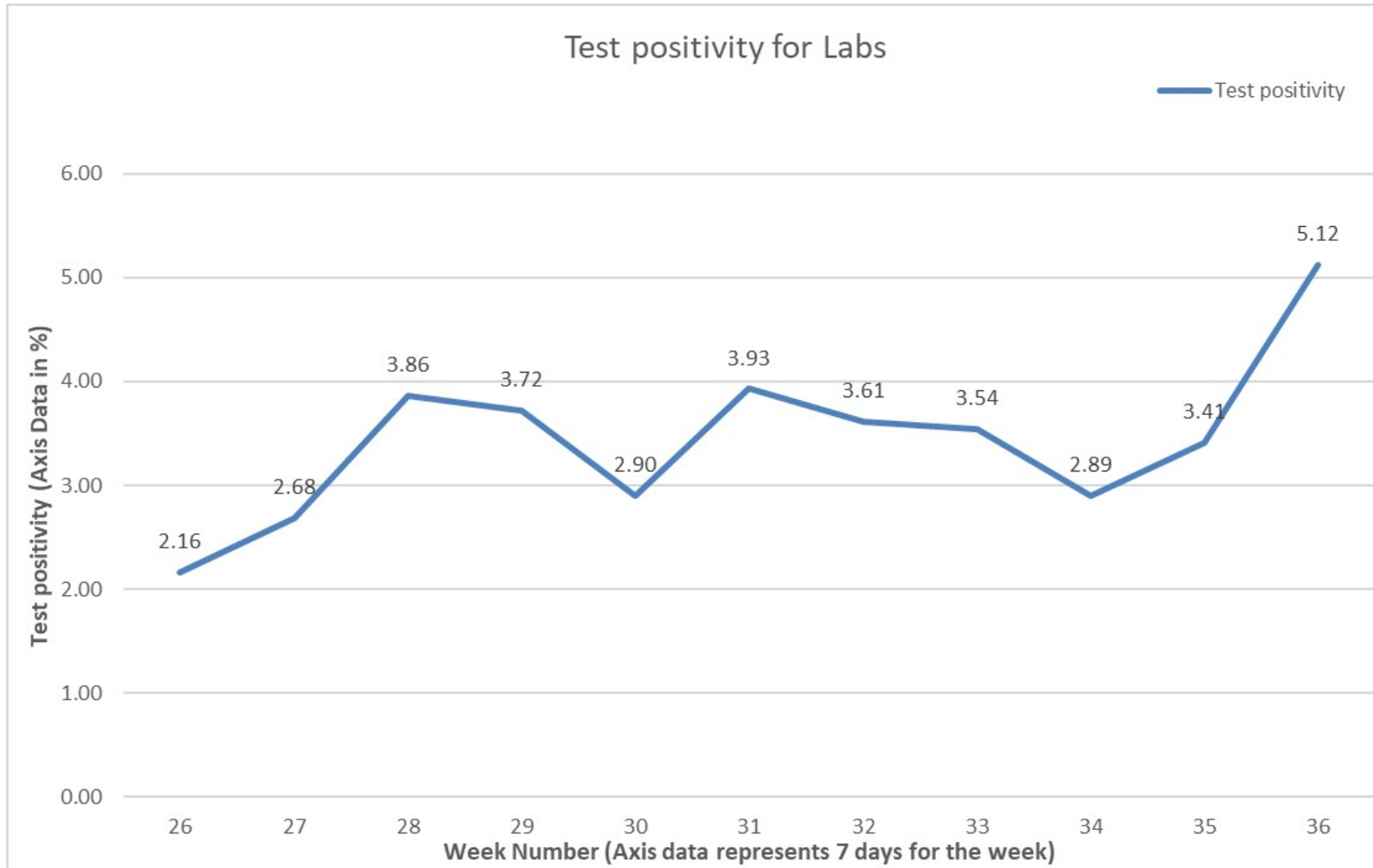


Closer look: testing

Week ending	Total number positive	Total number of tests	Positivity	Percent change in testing	Percent change in positivity
Aug. 1	175	4,456	3.93%		
Aug. 8	184	5,092	3.61%	14.3% increase	8.1% decrease
Aug. 15	175	4,945	3.54%	2.9% decrease	1.9% decrease
Aug. 22	152	5,252	2.89%	6.2% increase	18.4% decrease
Aug. 29	156	4,572	3.41%	12.9% decrease	18.0% increase
Sept. 5	206	4,022	5.12%	12.0% decrease	50.1% increase



Closer look: testing



Phase 3 metrics

	Metric	Target	Clark County – Phase 3 application	Clark County - current
Case and contact investigations	Percent of cases reached by phone or in person within 24 hours of receipt of positive lab test report	Target: 90%	63%	54% (Sept. 6-19) not meeting target <i>64% when including unsuccessful attempts</i>
	Percent of contacts reached by phone or in person within 48 hours of receipt of positive lab test report on a case	Target: 80%	61%	21% (Sept. 5-18) not meeting target <i>55% when including unsuccessful attempts</i>
	Percent of cases being contacted daily (by phone or electronically) during their isolation period	Target: 80%	88%	74% (Sept. 12-18) not meeting target <i>86% when including unsuccessful attempts</i>
	Percent of contacts being contacted daily (by phone or electronically) during their quarantine period	Target: 80%	88%	41% (Sept. 12-18) not meeting target <i>51% when including unsuccessful attempts</i>



Closer look: case investigations

- Outbreak at Chiro One impacted close contact metrics.
- Percentage of close contacts reached within 48 hours:
 - Outbreak resulted in 339 close contacts needing notification (out of 1,307 close contacts identified over past two weeks).
 - None reached within 48 hours, due to lag in completing case interview and collecting contact names and phone numbers from the facility.
 - Public Health contacted or made numerous unsuccessful attempts for 95% of Chiro One close contacts.
- Percentage of close contacts reached daily during quarantine:
 - Due to staffing limitations, Public Health has been unable to complete daily monitoring for all 339 close contacts.
 - Working to get all close contact information into the database to begin daily monitoring of patients.
 - Chiro One staff are receiving daily monitoring calls.



Closer look: case investigations

- Washington Department of Health provides case investigation and contact notification services, at counties' request, through a centralized investigations team.
- DOH issued report looking at metrics for reaching cases and close contacts via the centralized investigations team.

	Total number of cases	Percent of cases reached w/in 24 hours	Total number close contacts	Percent of close contacts reached w/in 48 hours
Target		90%		80%
DOH	551 (Aug. 23-Sept. 5)	50%	176* (Aug. 23-Sept. 5)	70%
CCPH	391 (Sept. 6-19)	54%	1,307 (Sept. 5-18)	21%

**Unclear whether this includes only close contacts from cases interviewed within 24 hours or all close contacts regardless of when case was interviewed*



Phase 3 metrics

	Metric	Target	Clark County – Phase 3 application	Clark County - current
Protecting high-risk populations	Number of outbreaks reported by week (defined as 2 or more non-household cases epidemiologically linked within 14 days in a workplace, congregate living, or institutional setting)	Target: 0 for small counties (<75,000); 1 for medium counties (75,000-300,000), 2 for large counties (>300,000) , 3 for very large counties (>1 million)	0-2 per week	6 (3 LTCF) (Sept. 13-19) not meeting target



Schools guidance

- Public Health and Clark County school superintendents agreed to monitor COVID-19 activity rate for three weeks after Labor Day before expanding in-person learning.
 - If weekly rate stayed in moderate range for three consecutive weeks, Public Health would consider recommending expanded in-person learning, beginning with the youngest students.
 - Moderate range: 25-75 cases per 100,000 residents over 14 days.
 - Recommendations align with state guidance for reopening schools.
- COVID-19 activity levels after Labor Day:
 - **Sept. 14:** 69.4 cases per 100,000
 - **Sept. 21:** 76.15 cases per 100,000



Schools guidance

- Public Health wants to see COVID-19 activity level drop back into the moderate range and remain in moderate range for at least three consecutive weeks before recommending expanded in-person or hybrid learning.

current covid-19 activity level

>75 cases per 100k
people in 14 days

- Almost entirely remote learning
- Limited in-person learning for high-need students
- No sports or extra-curricular activities



Based on Washington State Department of Health guidelines released August 4, 2020.



Thank you!

