

Source Control

A Program Overview for the Clark County Clean Water Commission

Bob Patterson, Environmental Operations Specialist Senior
Clark County Public Works – Clean Water Division.

March 31, 2021

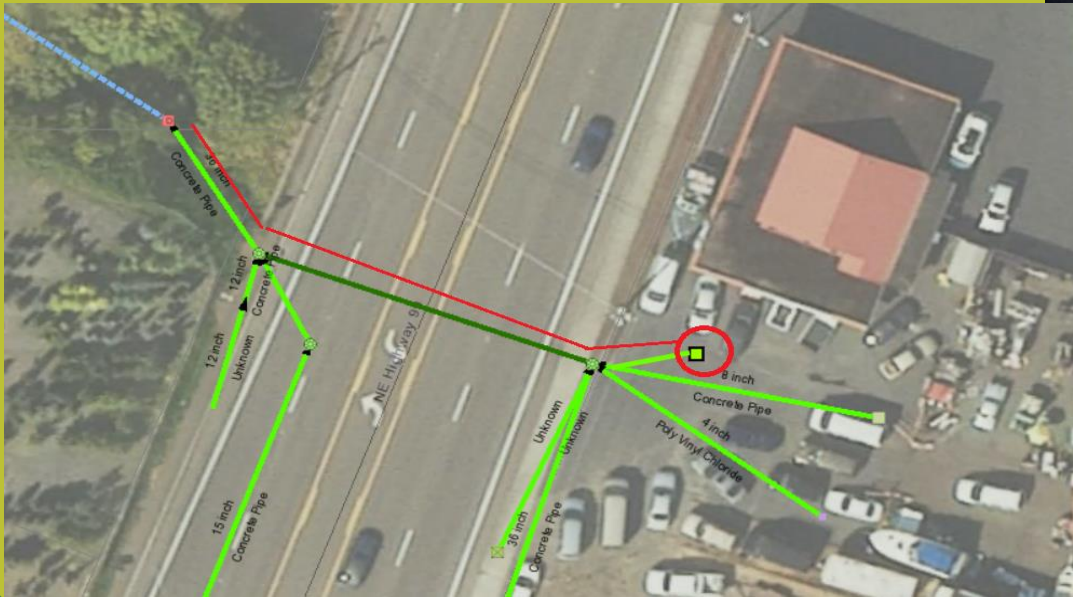


Introductions:



Source Control

Older portions of our MS4 do not have the built-in protections to retain or treat stormwater before it enters our rivers lakes and streams.



Why We Do Source Control

-
- Our NPDES (S5.C.8) Source Control
 - PPA Partnership
 - All backed by Clark County Code 13.26.a



Source Control Permit Requirements

1. Create a Business Inventory
 2. Visit and Inspect 20% of that Inventory Annually.
-
3. Implement Best Management Practices at those business site to protect stormwater.



Source Control Business Inventory

GIS identified businesses/sites within the permit area - 2017	Total	Annual Permit Compliance: 20% of Inventory
Total number of businesses/sites in the permit area based on personal property data	2162	
Businesses types by SIC (and NAICS) prioritized by Ecology in Appendix 8 of the permit	1272	
Permit area sites identified as connected to or with the potential to impact the county's MS4	1113	
Businesses/sites in the permit area characterized by Appendix 8 and identified as potentially impacting or connected to the MS4	602	121



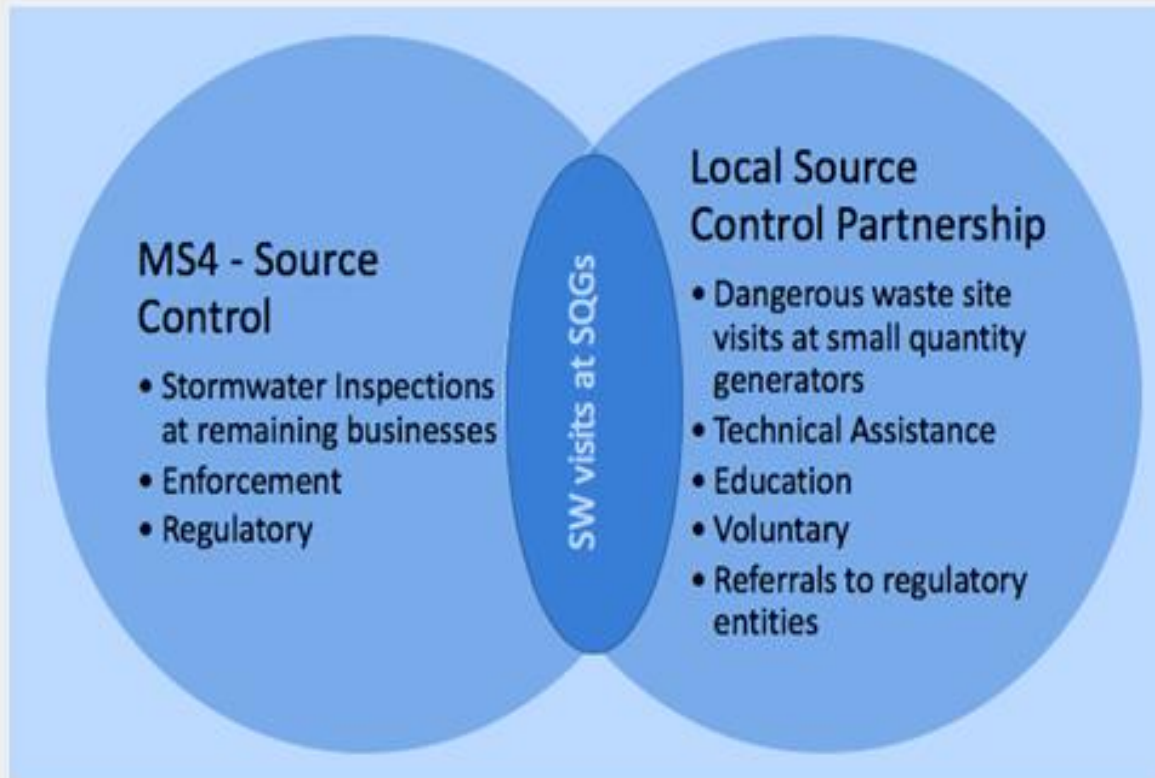
PPA Partnership with Ecology

A little over 150 Business Visits a year to help Businesses prevent pollution and stormwater through waste management.

This is by Contract Biannually and is worthy of a its own presentation.



Where PPA and Stormwater Meet



Source Control Requirements

All our work is back by Clark County Code 13.26.a that protects the waters of Clark County and the waters of the state from pollutants generated – with our focus here being on the Business Community of our permit area.



We Fix the Problems we Find with Source Control BMPs:

We find and Fix using two kinds of BMPs

- **Operational** – the way we work.
- **Structural** – the things that work for us.



Operational BMPs:

- Sweep Instead of wash.
 - Inspect and repair to avoid a mess.
 - Take the operation indoors.
 - Capture pollutants at their source.
 - Reduce pollutants through efficiencies.
-
- Use a drip Pan.
 - The list goes on and gets specific for your target businesses or pollutants.



Structural BMPs:



Stormwater System Basics

Stormwater management in its simplest terms.

Flow control and treatment

- Hold it back and meter it out
- Clean it up as best we can before we send it to the ground or our receiving waters

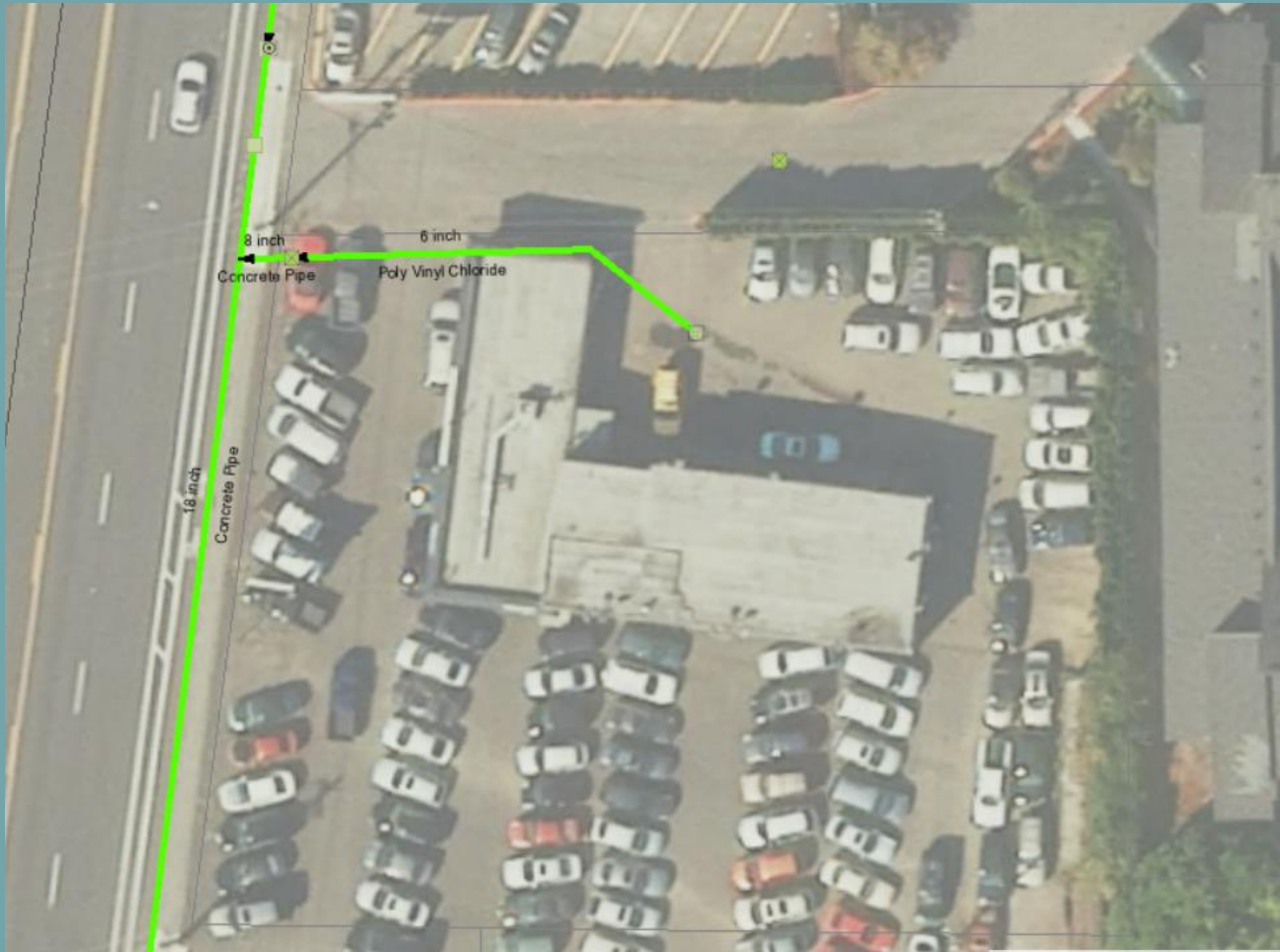


Stormwater System Basics


Or in this case the lack of a systems for stormwater protections



Stormwater System Basics




Stormwater System Basics

**MAPSONLINE**
Clark County WASHINGTON

Stormwater

Map SitesFind ParcelSearchLocate AddressFind Lat/LongGet DirectionsPrint MapDisclaimerHelp



Show / Hide

LayersSearchInfo


Owner Mailing Address
2405 NW 111TH ST
VANCOUVER WA, 98685


Most Recent Sale

Sale Date:	10/16/2001
Document Type:	DEED
Document Number:	0488264
Sale Amount:	\$80,000.00

Property Photo

Photo Date:	02/01/2019
-------------	------------





Stormwater System Basics



Stormwater System Basics



SYSTEM BASICS: The Catch Basin – Our first line of defense.



System Basics: The Catch Basin



System Basics: The Catch Basin



System Basics: The Oil Water Separator



System Basics: Bio retention

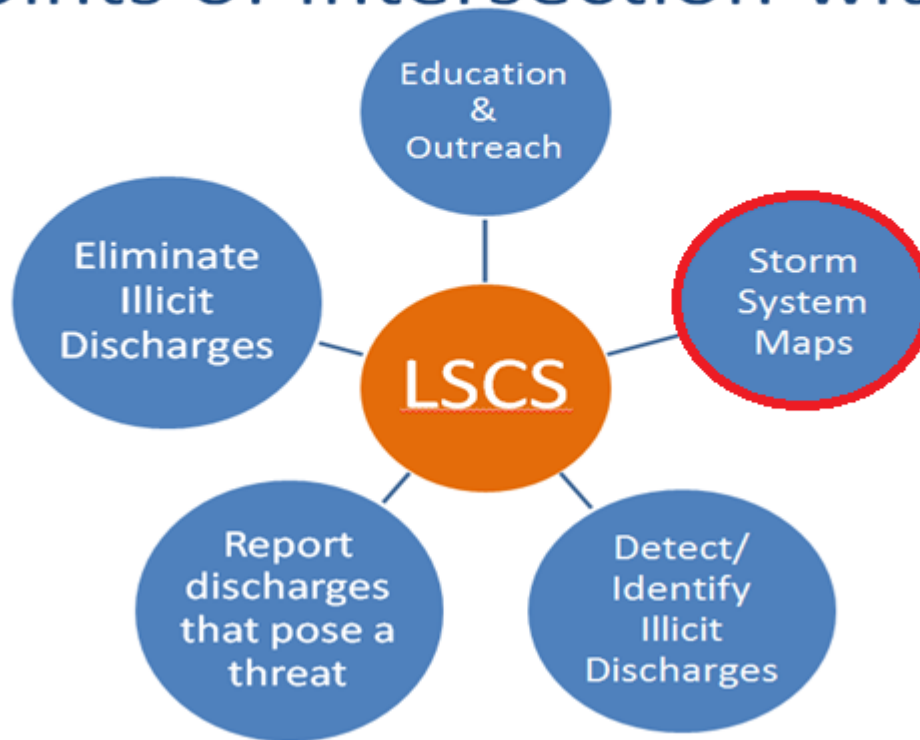


Mapping: The Source Control Sonar tool



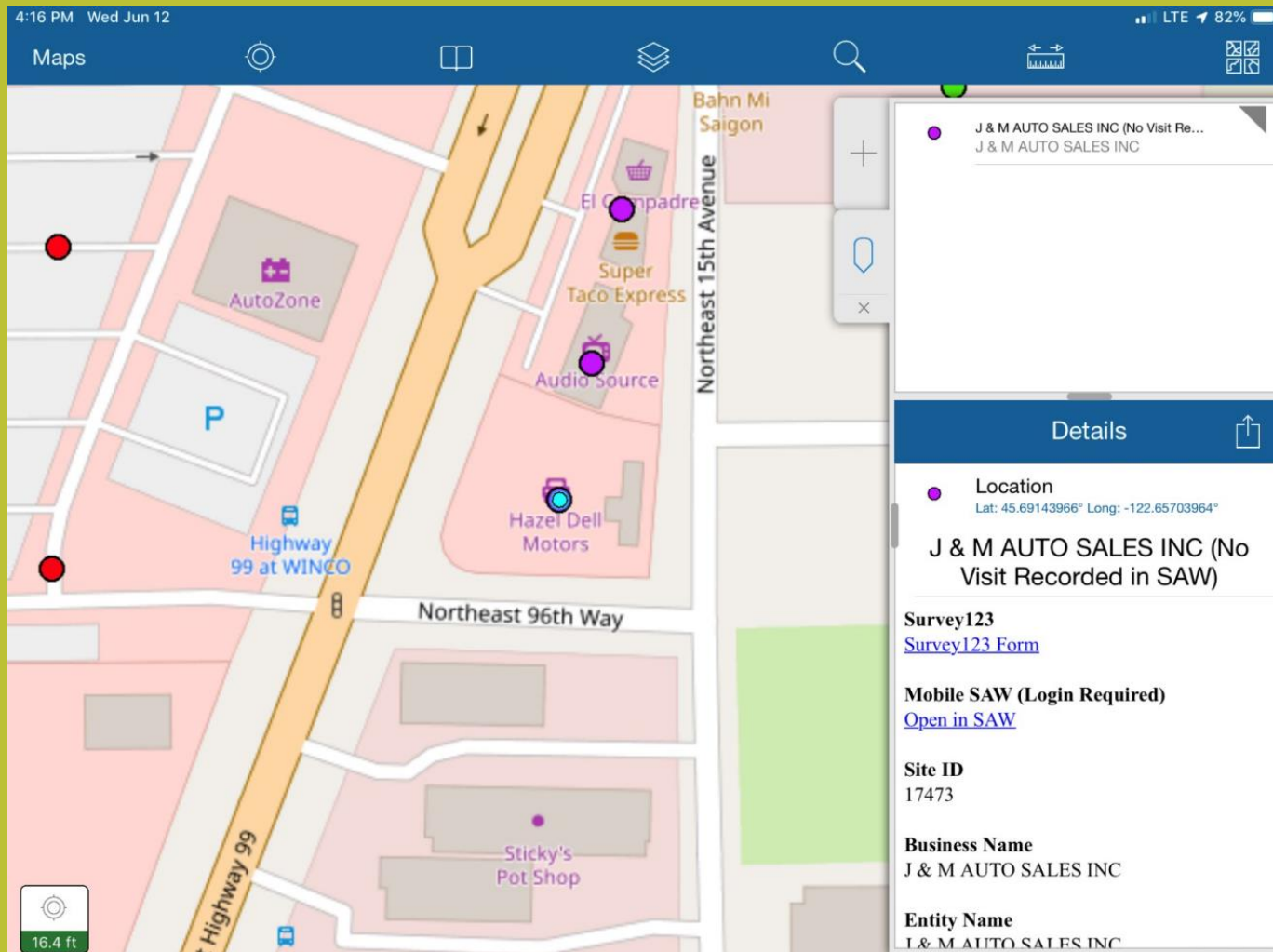
DEPARTMENT OF
ECOLOGY
State of Washington

Key Points of Intersection with LSCS



2

Mapping used in conjunction with field apps on our iPads.



Stormwater Mapping for Spill Response:



Stormwater Mapping for Spill Response:



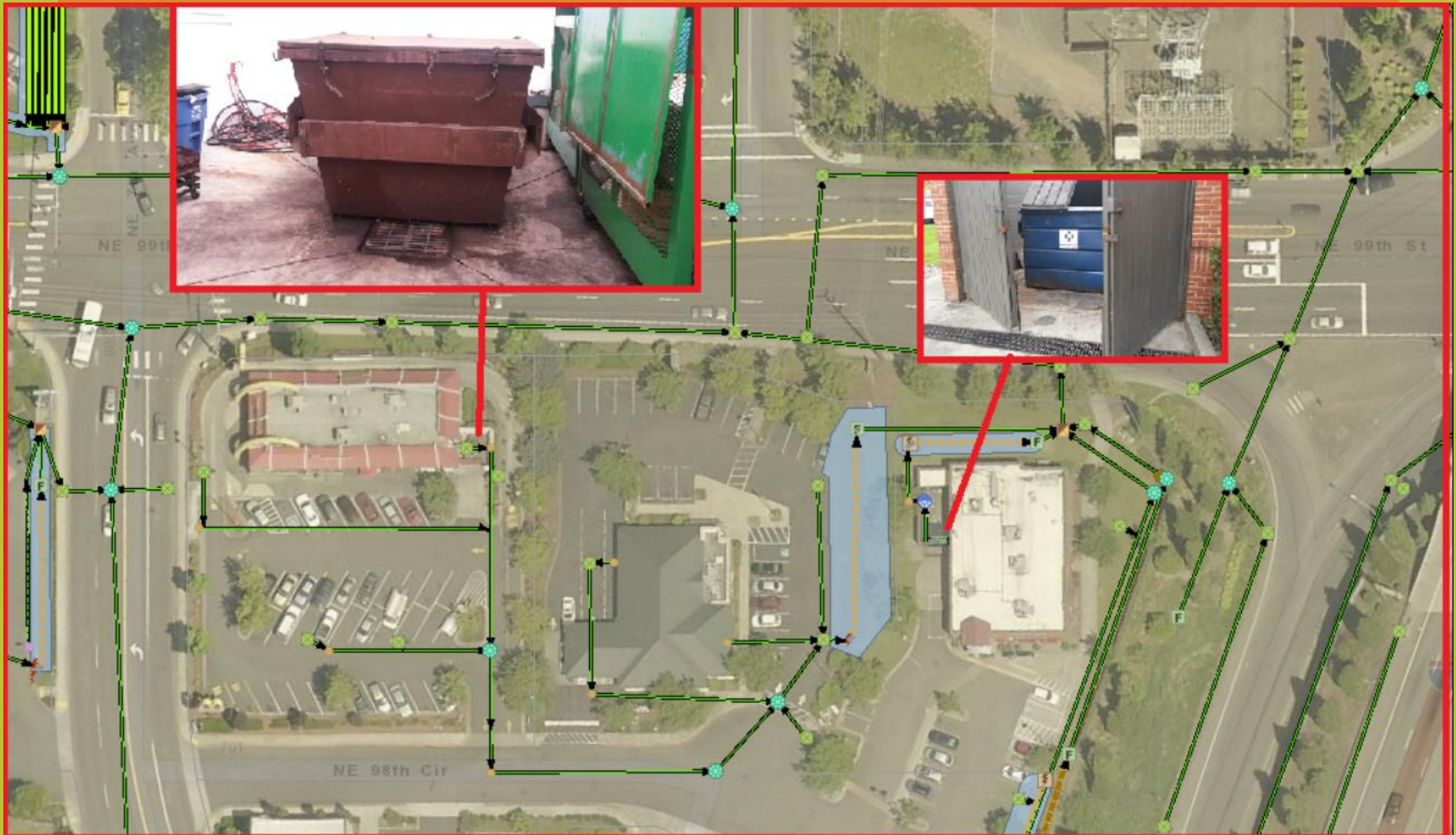
Stormwater Mapping identifies “Pollution by Design”



Stormwater Mapping identifies “Pollution by Design”



Stormwater Mapping identifies “Pollution by Design”



BMPs for Pollution prevention and controls – Structural BMP in Action.



I put this here because it's a funny picture.



Source Control Work takes on the discharge of wash waters.



Redirecting the Discharges of Wastewaters/Wash waters is a High Priority Issue



Fats,Oils and Grease are a reoccurring issue



Solids



Interior Floor Drains connected to the MS4 - Really – The Interior Floor Drain

Our simple solution to pollution prevention assistance at the stormwater level is summed up in: “No Rain, No Drain”



Interior Floor Drains:



Cleaning Up: Maintenance Issues Identified through Source Control



Stormwater Specific Outreach



Clark County's Catch Basin Clean out Program

<https://www.clark.wa.gov/public-works/catch-basin-cleanout-program>

STORMWATER POLLUTION PREVENTION FOR BUSINESSES

CATCH BASIN CLEANOUT - NOW JUST \$45



Stay in compliance, maintain your catch basins

Catch basins stop pollutants from reaching waterways by trapping sediment and other material picked up by stormwater runoff.

Catch basins need regular maintenance to remove trapped sediment and debris. Businesses are responsible for cleaning their catch basins.



Sign up now to schedule at www.clark.wa.gov/catchbasincleanout | 564.397.4345

- Professional cleaning at a guaranteed, low-cost price of \$45 per catch basin
- Maintenance records submitted automatically
- Prevent nuisance flooding, water pollution and regulatory violations



Clark County's Catch Basin Clean out Program

<https://www.clark.wa.gov/public-works/catch-basin-cleanout-program>

CATCH BASIN CLEANOUT PROGRAM

The Catch Basin Cleanout Program assists businesses and other private catch basin owners prevent stormwater pollution inexpensively and efficiently. Catch basin owners are responsible for cleaning sediment and debris from catch basins to prevent pollutants from reaching stormwater treatment facilities and streams.

By negotiating through a competitive process, the program is able to provide catch basin cleaning at the **low cost of \$45 per catch basin**.

Businesses must sign up to participate.

Why clean your catch basin?

Prevent pollution - As the property owner, you are responsible for cleaning your privately owned catch basins to keep dirt, debris, oils and other pollutants from entering the public stormwater system. Catch basins can lead directly to streams without treatment to remove pollutants.

Save on stormwater facility maintenance costs - If your property has a stormwater facility, cleaning catch basins is a good way to keep sediment from accumulating in the facility where heavy construction equipment may be needed to remove it.

Prevent flooding - By keeping your business's drains clean, you are preventing flooding, a nuisance to customers, and a driving hazard.

Protect pavement - Keeping your business' drains clean may prevent standing water on pavement. Standing water seeps into asphalt cracks causing premature failure of parking areas.

Program information



A catch basin, also known as a storm drain inlet, is designed to trap sediment and debris before it gets into the storm drainage system.



Clark County's Catch Basin Clean out Program

Program information

Businesses are responsible for cleaning catch basins on their properties. Municipalities are responsible for cleaning and maintaining catch basins within public right-of-ways. Catch basins are the metal grates found in parking lots that allow stormwater to drain away. Catch basins also include a sump to trap sediment to keep it out of the storm drainage system.

This service will provide a basic cleaning and does not include additional maintenance or repair work. Additional services (catch basin inserts, line jetting, etc.) may be available at additional costs. Inquire when scheduling the cleaning.

The vendor performing the catch basin cleaning may identify deficiencies within your catch basin or storm drainage system and provide a quote for repair. You may elect to have the work done by the vendor, or obtain additional quotes for cost comparisons.

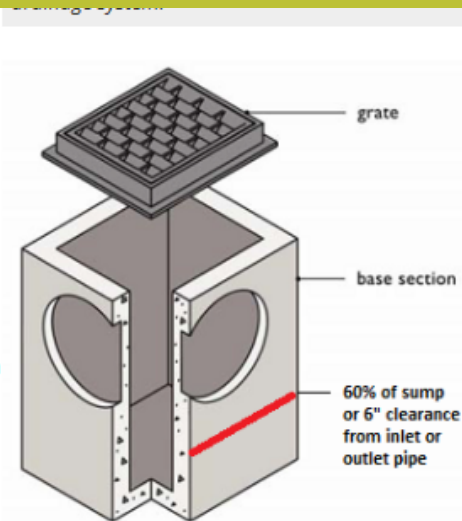
This discounted service is only offered to businesses in unincorporated Clark County. Businesses within city limits are not eligible at this time. The county does not guarantee or provide any warranty for the work performed by the vendor.

Many of the catch basins in Clark County are in the county mapping system. You can view this information on the county geographic information system (GIS), [Clark County MapsOnline](#). Stormwater information is in the utilities map site.

Questions? Contact Bob Patterson 564.397.4493 bob.patterson@clark.wa.gov

Things to remember:

- To get the price of \$45 per catch basin, sign up in the fall from September 1 - November 15 or in the spring from March 1 - July 1.
- Do not park over the catch basin.
- If catch basin is in a parking space, leave that space AND a space beside it open.
- A 14' height clearance is needed for the trucks to safely maneuver.



Catch basins must be cleaned out when sediment and debris fill 60% of the sump or when clearance from pipes reaches 6".

Clark County's Catch Basin Clean out Program

Schedule a Catch Basin Cleaning

Business Name or Business Owner Name *

Email Address *

Site Address Line *

Site City *

Site State *

Washington ▼

Site Zip *

Billing Address Line *

Billing City *

Billing State *

Washington ▼

Billing Zip *

Contact Name for Person Scheduling the Work *

Contact Phone Number *

Alternative Contact Name

Alternative Contact Phone Number

Estimated Number of Drains On Your Property *

If water is ponding on your property, you may request expedited service. Additional fees may apply, check yes if you wish to find out the cost for expedited service.

☐ Yes



Clark County's Stormwater Pollution Prevention Program Highlighted

Stormwater Pollution Prevention Assistance – Clark County Clean Water Division

<https://youtu.be/EDl6g-p9G3c>



Questions?

Thank You



Bob Patterson – 564-397-4493

Bob.Patterson@Clark.wa.gov

Clark County Public Works – Clean Water Division

1300 Franklin Street • PO Box 5000

Vancouver, WA 98666-5000

