

COVID-19 update

Alan Melnick, MD, MPH, CPH

May 25, 2021



Washington

According to the state situation report issued May 19:

- Case counts are declining statewide and either declining or flattening in most counties.
 - Among the five largest counties, case counts in Clark and Spokane are flat, while King, Pierce, and Snohomish are seeing declines.
- Vast majority of cases in the state are now associated with variants of concern.
 - Estimated 80% of all cases likely due to B.1.1.7 variant and about 10% due to P.1 variant
- Transmission decreased sharply over the last two weeks of April, but was still relatively high as of April 30.
 - Behavior- and variant-based reproductive number: 1.34
 - Total reproductive number (includes effects of immunity): 0.88



Washington

- As of May 6, case rates were declining in most age groups and flattening in the rest.
 - Cases were flattening among children ages 0-9 and adults 60-69, and remained flat in people age 70 and older.
 - Case rates continued to be highest among people ages 20-29, followed by ages 10-19 and ages 30-39.
- Hospital admissions were declining slightly in people ages 20-79 as of May 6.
 - More recent data from hospitals suggests total hospital admission rates are continuing to flatten or decline slightly as of mid-May.
- The hospital admission rate for COVID-19 in unvaccinated people ages 45-64 is about **18 times higher** than people of the same age who are fully vaccinated.
 - For people ages 65 and older, the hospital admission rate is about **11 times higher** among people who are unvaccinated than those who are fully protected.



Clark County

- Case numbers appear to be flattening or beginning to decrease.
 - Several weeks ago, we averaged more than 100 cases per day.
 - In the last two weeks, we've averaged 88 cases per day.
- Clark County's COVID-19 activity rate is now decreasing.
 - The rate increased each week since March 15, from 88.8 cases up to 276.6 in early May.
 - The rate has decreased each of the last two weeks, down to 251.6 this week.
- Clark County hospitalizations for COVID-19 cases have increased recently.
 - New hospital admission rate is up to 7.8 cases per 100,000 this week, from 6.4 cases per 100,000 last week.
 - ICU occupancy also exceeded 90% a several times in the last two weeks.

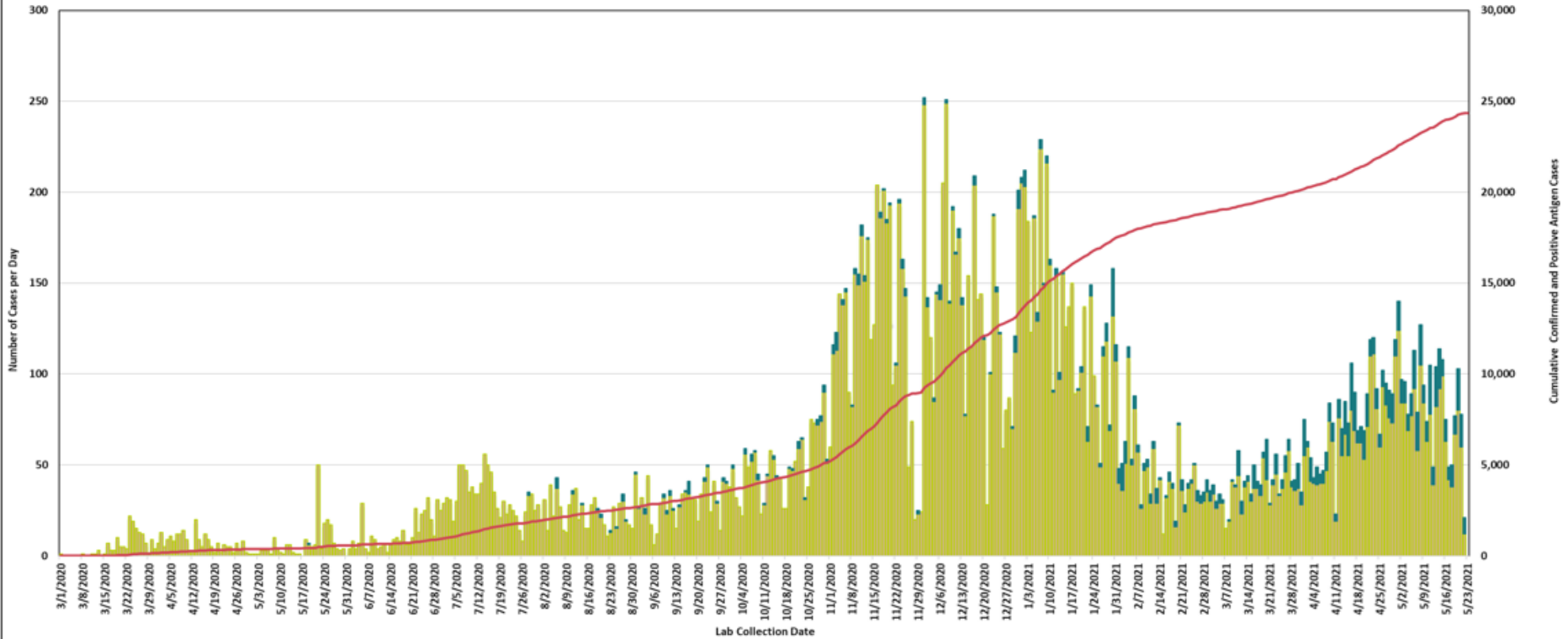


Clark County

Clark County Confirmed & Positive Antigen COVID-19 Cases, by Lab Collection Date

The "cumulative" line gives us an indication of how fast we are identifying new cases; the sharper the upward slope, the more new cases are being reported. A plateau or more gradual slope in this line shows that we are identifying fewer cases each day, or successfully "flattening the curve".

■ Number of Confirmed Cases
■ Number of Positive Antigen Cases
— Cumulative Confirmed and Positive Antigen Cases



Clark County

as of May 25

Number of confirmed cases	23,037
Number of antigen probable cases	1,290
Number of active cases	488
Number of total deaths	270
Rate per 100,000	251.6

- Hospital beds occupied: **72.8%**
- ICU bed occupied: **93.9%**
- Acute care beds occupied: **70.4%**
- Beds occupied by COVID-19 cases, PUIs: **7.9%**
 - **43** COVID-19 cases hospitalized
 - **3** COVID-19 PUIs (awaiting test results) hospitalized



SARS-CoV-2 variants

- Variants continue to be a concern.
 - Vast majority of SARS-CoV-2 infections in Washington state are attributed to variants of concern.
- Four of the five variants of concern have been detected in Clark County: B.1.1.7 (UK), B.1.427 and B.1.429 (California) and P.1 (Brazil)
- B.1.1.7 (UK):
 - Spreads more easily and quickly than other variants.
 - About 50% increased transmission
 - Potential increased severity based on hospitalizations and case fatality rates.
 - Recent study of 55,000 UK patients considered to be relatively low-risk diagnosed with SARS-CoV-2 in the UK between October 2020 to January 2021 showed an overall 1.6-fold increase in risk of death compared with infection with previous strains.
 - So far, studies suggest the COVID-19 vaccines are effective against the B.1.1.7 variant.

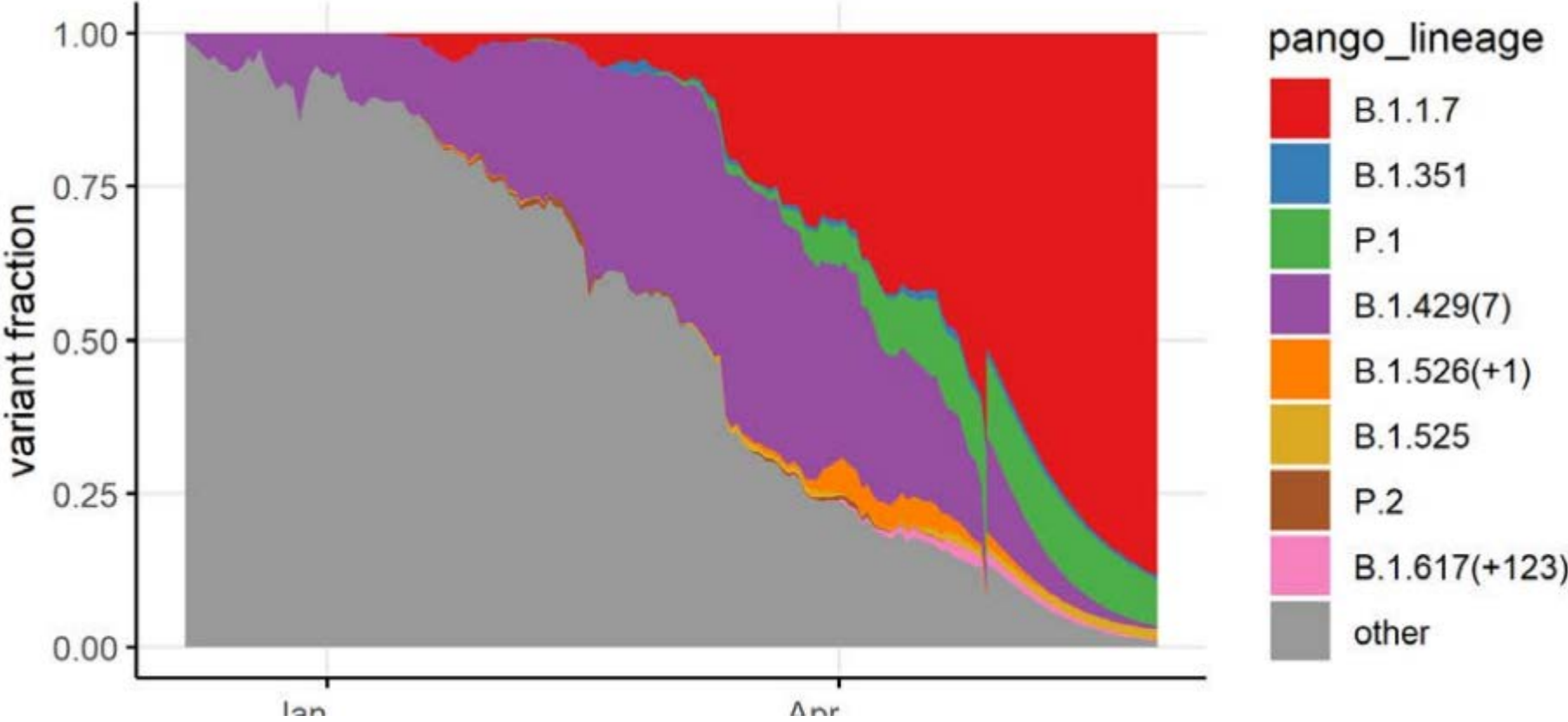


SARS-CoV-2 variants

- B.1.427 and B.1.429 (California):
 - Evidence they are slightly more contagious
 - About 20% increased transmission
 - Some COVID-19 antibody treatments may be less effective against the strains.
- P.1 (Brazil)
 - Evidence suggests some mutations of P.1 variant may affect the ability of antibodies (natural and from vaccine) to recognize and neutralize the virus.
 - Some COVID-19 antibody treatments may be less effective against the strains.



SARS-CoV-2 variants



Healthy Washington – Roadmap to Recovery

- Every county in the state is currently in Phase 3.
- On June 30, the state will reopen and most public spaces will return to full capacity.
 - The reopening could happen earlier than June 30 if 70% or more of Washington residents 16 years or older have at least one dose of COVID-19 vaccine.
 - Currently, 61% of state residents 16 years and older have at least one dose.
- The reopening plan could change if the state's COVID-19 data changes or if the state's ICU capacity reaches 90% at any point.



CDC recommendations for fully vaccinated people

- CDC recently announced new recommendations for people who are fully vaccinated.
 - You're considered fully vaccinated two weeks after getting your second dose of Pfizer or Moderna or two weeks after getting the single-dose Johnson & Johnson vaccine.
- Under the new CDC recommendations:
 - People who are fully vaccinated do not need to wear masks in outdoor or indoor settings or maintain physical distancing, except health care settings (like hospitals, long-term care, or doctor's offices), correctional facilities, homeless shelters, or schools.
 - The federal order requiring masks on public transportation also still applies.
 - Businesses retain the right to require masks in their establishments, and to ask for proof of vaccination.
- Gov. Inslee announced the state of Washington is adopting the CDC's guidance for fully vaccinated people.



Washington workplace guidance

- The governor's office and Labor & Industries released updated workplace face covering requirements on Friday.
- Under the updated guidance:
 - Fully vaccinated employees do not have to wear a mask or be physically distanced at work, unless their employer still requires it.
 - Before ending mask and physical distance requirements, employers must confirm workers are fully vaccinated
 - Confirm by having the worker sign a document attesting to their status or provide proof of vaccination.
 - Employers must be able to demonstrate they have verified vaccination status for workers who are not masked or physically distanced.
 - Must be available to L&I upon request.
- Employers may still require mask use if they choose.
- If an employee is not fully vaccinated or their vaccination status is unknown, employers must continue to require masks and physical distancing.

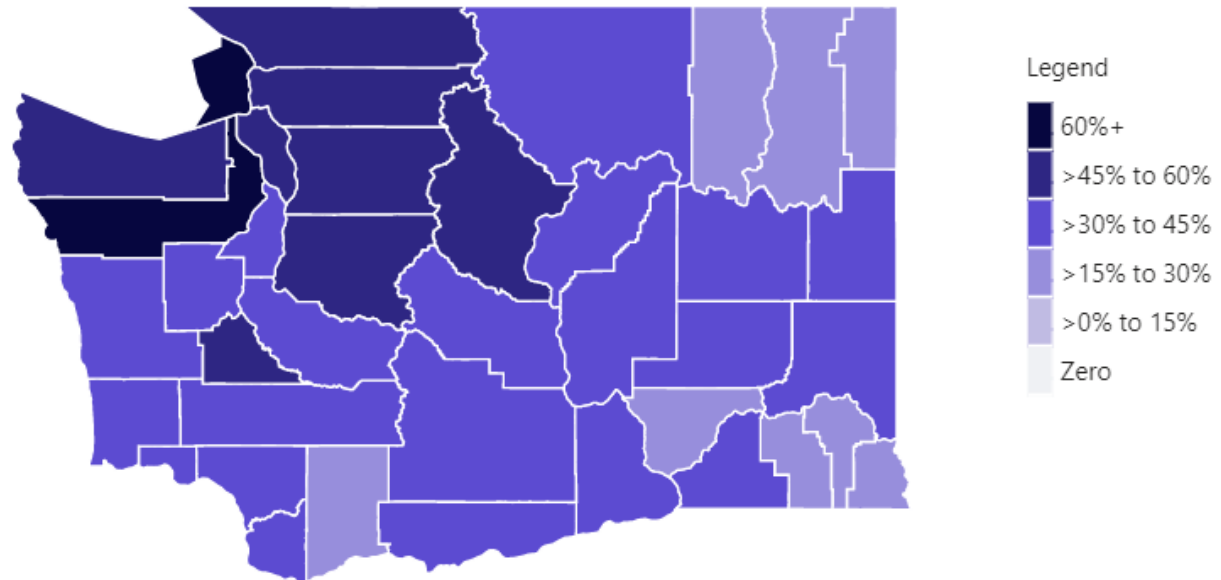


COVID-19 vaccine administered

as of Saturday, May 22

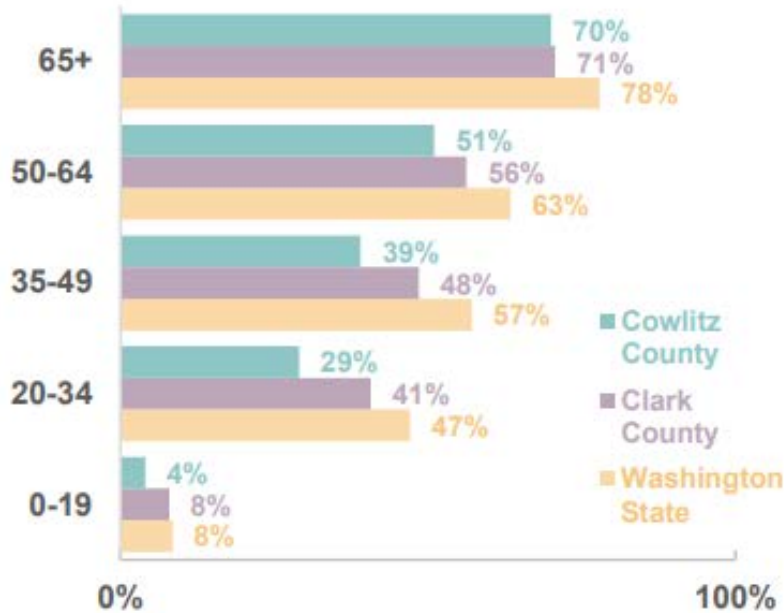
- **379,581** doses administered in Clark County
- **216,824** Clark County residents have received at least one dose
 - 43% of residents all ages; 55% of residents 16+ years
- **178,515** Clark County residents are fully vaccinated
 - 36% of residents all ages; 45% of residents 16+ years

TOTAL POPULATION INITIATING VACCINATION (RECEIVING AT LEAST 1 DOSE)

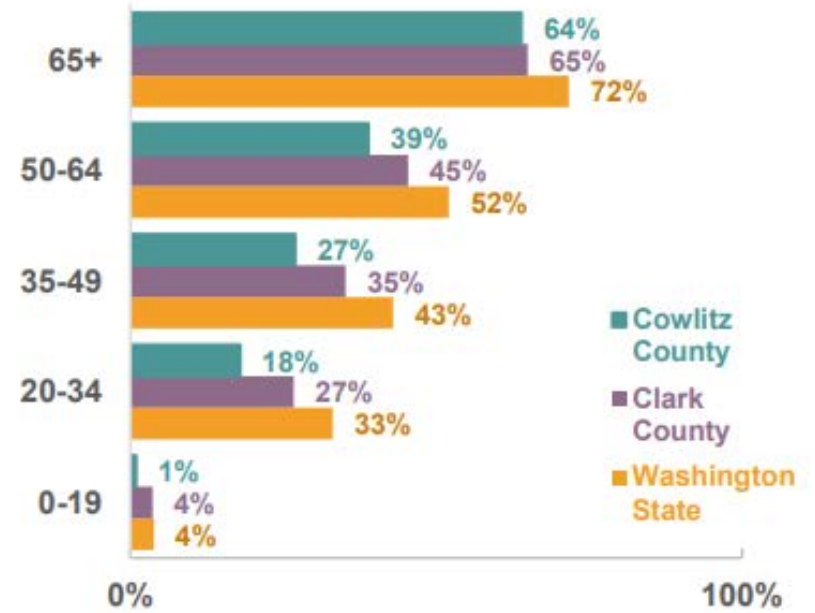


DEMOGRAPHICS OF PEOPLE VACCINATED AGAINST COVID-19

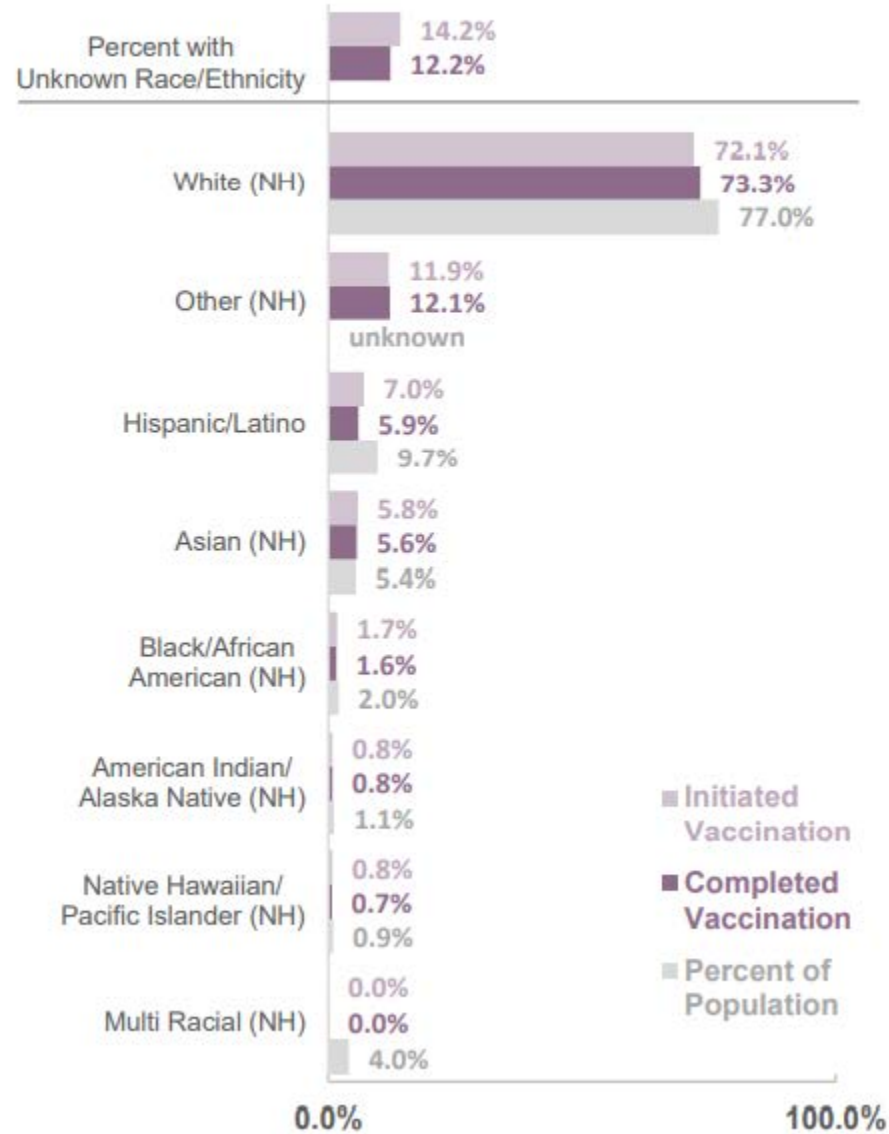
Percent of population in each age group who have **initiated*** COVID-19 vaccination



Percent of population in each age group who have **completed** COVID-19 vaccination



Racial/ethnic breakdown of people in Clark County who are vaccinated against COVID-19 (among those with a known race/ethnicity)



Tower Mall vaccination site

- Public Health continues to partner with city of Vancouver and Safeway to operate the Tower Mall vaccination site four days per week.
- With COVID-19 vaccine now readily available at a variety of local pharmacies and medical offices, Public Health and partners have decided to close the Tower Mall site next month.
- Tuesday, June 29 will be the last day of operations.
 - Continue to offer first and second doses of Pfizer.
 - People who receive a first dose after June 8 can go to a local Safeway or Albertsons pharmacy, or another local site offering Pfizer, for their second dose.
- State is closing the vaccination site at the fairgrounds Friday, May 28.
 - Tower Mall will provide second doses for people who received first doses at the fairgrounds.
- More than 36,000 doses of Pfizer have been administered at Tower Mall since the site opened on March 5.



Public Health IMT

- Public Health's incident management team (IMT) is preparing to demobilize.
- IMT response began in January with the arrival of a federal Type 1 team in Southwest Washington.
- In late February, the Type 1 team transitioned work to the Southwest Washington Regional IMT.
 - The regional team has been staffed largely by Clark County Public Health, with some additional contracted staff experienced in incident command.
- The IMT is working on a demobilization plan that will integrate COVID-19 vaccine response work into Public Health programs.
 - Plan to have transition complete by June 30.



Public Health vaccination efforts

- Public Health recently visited several local encampments and shelters that provide services to people who are unhoused to offer COVID-19 vaccination.
 - In the last two weeks, we've vaccinated:
 - 64 people at two shelters
 - 20 people at two encampments
- Public Health continues to vaccinate people who are homebound.
 - Vaccinated 15 homebound residents this week.
- Public Health is also continuing efforts to make COVID-19 vaccine easily accessible by hosting vaccination clinics throughout the county.



Public Health vaccination efforts

- Hosted a one-day vaccination clinic last Saturday at Hathaway Elementary School in Washougal.
 - Vaccinated 168 people with Pfizer.
 - Will return June 12 for second doses.
 - Vaccinated 137 people with Johnson & Johnson
- Hosting a vaccination clinic today at Ridgefield High School.
 - Worked with Ridgefield School District and the associated student body (ASB) club at Ridgefield High School
 - Open to students (with parent consent) and the community
 - Providing Pfizer and Johnson & Johnson vaccine
 - Will return June 16 for Pfizer second doses
- Public Health will host a vaccination clinic 3-7 pm Wednesday, June 2 at North Country EMS Administration Building in Yacolt.
 - Providing Pfizer and Johnson & Johnson vaccine
 - Will return June 23 for Pfizer second doses
 - Appointments and walk-ins



Vaccination site process

- Public Health vaccination clinics are open to the community.
 - Pfizer vaccine is available for those 12 and older; Johnson & Johnson vaccine is available for those 18 and older.
- Appointments are scheduled using the state's PrepMod website.
 - Majority of people schedule in advance.
 - Electronic copy of the vaccine emergency use authorization fact sheet is provided during appointment registration.
- Upon arrival at the site, clients fill out a vaccine administration form and answer screening questions.
 - Printed emergency use authorization fact sheets are available.
- Next, they go to registration.
 - Those with appointments check in.
 - Those without appointments are walked through the PrepMod registration process by Public Health staff or volunteers.



Vaccination site process

- After registration, they go to medical screening.
 - Registered nurses screen everyone to be vaccinated and ask clients if they have any questions about the vaccines or the vaccination process.
- Next, they go to the vaccination station.
 - Medical staff review the vaccination process with clients and ask if they have any questions prior to administering the vaccine.
- Upon vaccination, clients are provided a printed copy of the emergency use authorization fact sheet and a flyer about the CDC's V-safe monitoring system.
 - Materials are available in multiple languages.
- Finally, clients move to the monitoring area where they remain under medical supervision for 15-30 minutes.
- To date, Public Health has administered more than 3,300 doses of vaccine at these short-term vaccination clinics.

