

# Felida Park Parking Lot and Children's Play Area And Curtin Creek Community Park Update

---

Clark County Public Works



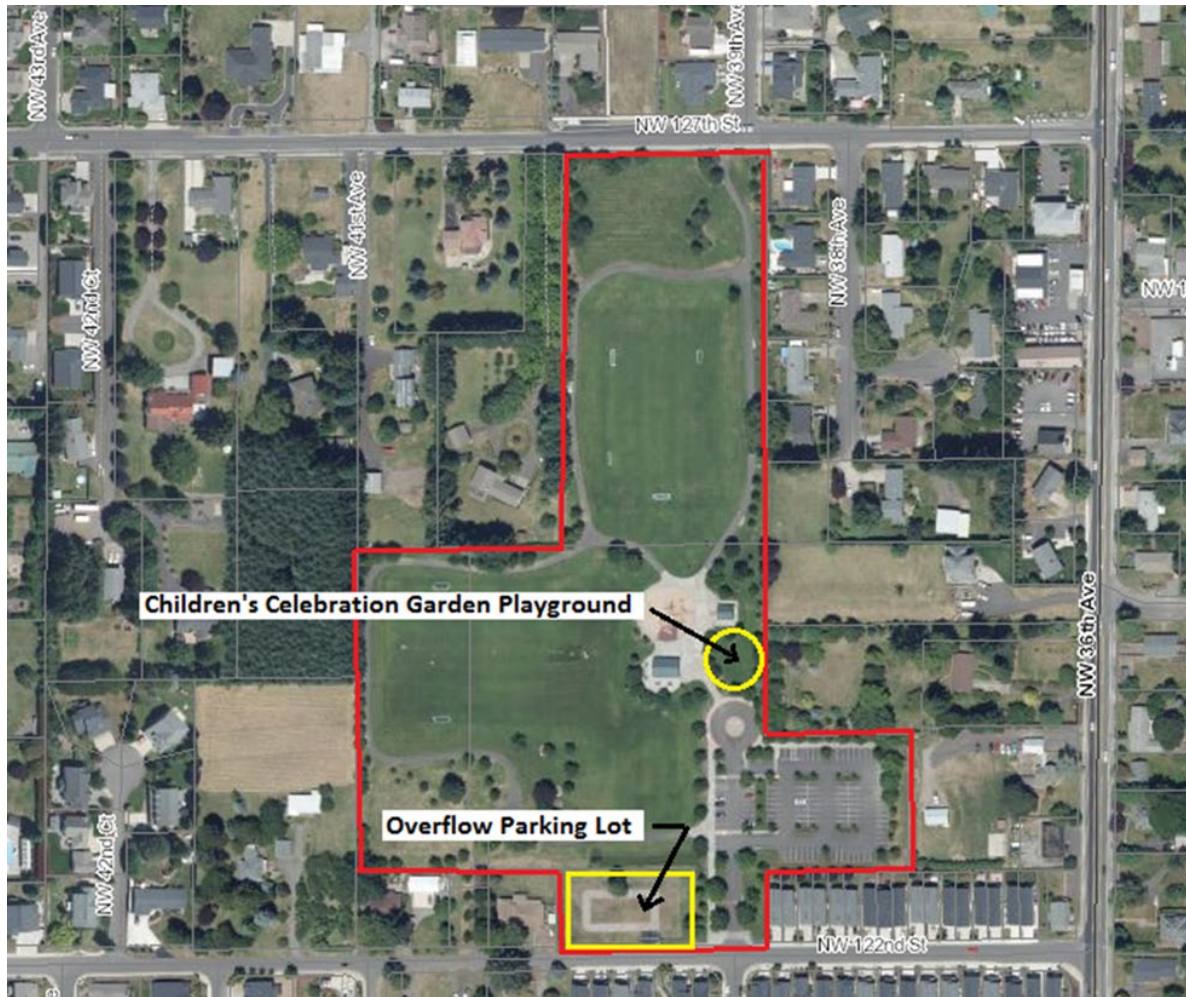
This project will:

- Add an overflow parking lot that will provide 35 additional parking spaces.
- Construct a Children's Celebration Garden Playground. Amenities are anticipated to include a rubberized play surface, benches, rock features, and various playground equipment designed for children of all abilities.



# Felida Park Improvements Council District 2

Project #: 0000138

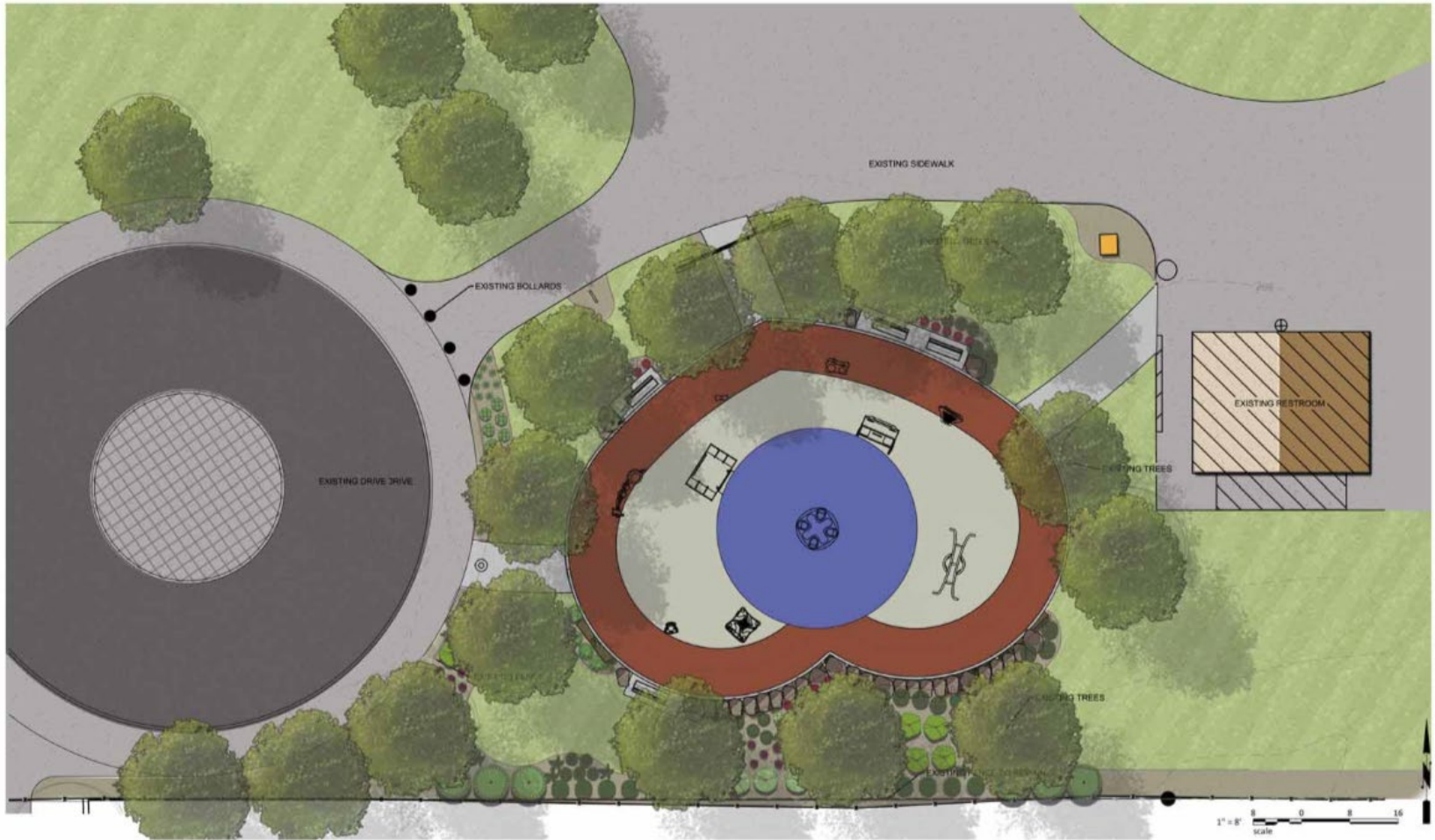




## Felida Community Park Overflow Parking Lot

Felida Community Park | Concept Plan | September 2019





### Children’s Celebration Garden Playground

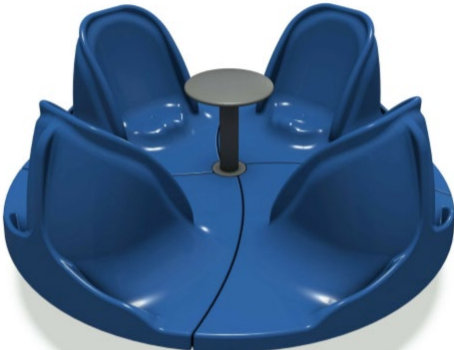
Felida Community Park | Concept Plan | September 2019



Amenities: Rubber Surfacing, Benches, Rock Features, Various Playground Equipment  
Designed for Children of All Abilities.



Fire Truck Cab



Merry-Go-All



Concert Duo



Sensory Wave Rock N Raft



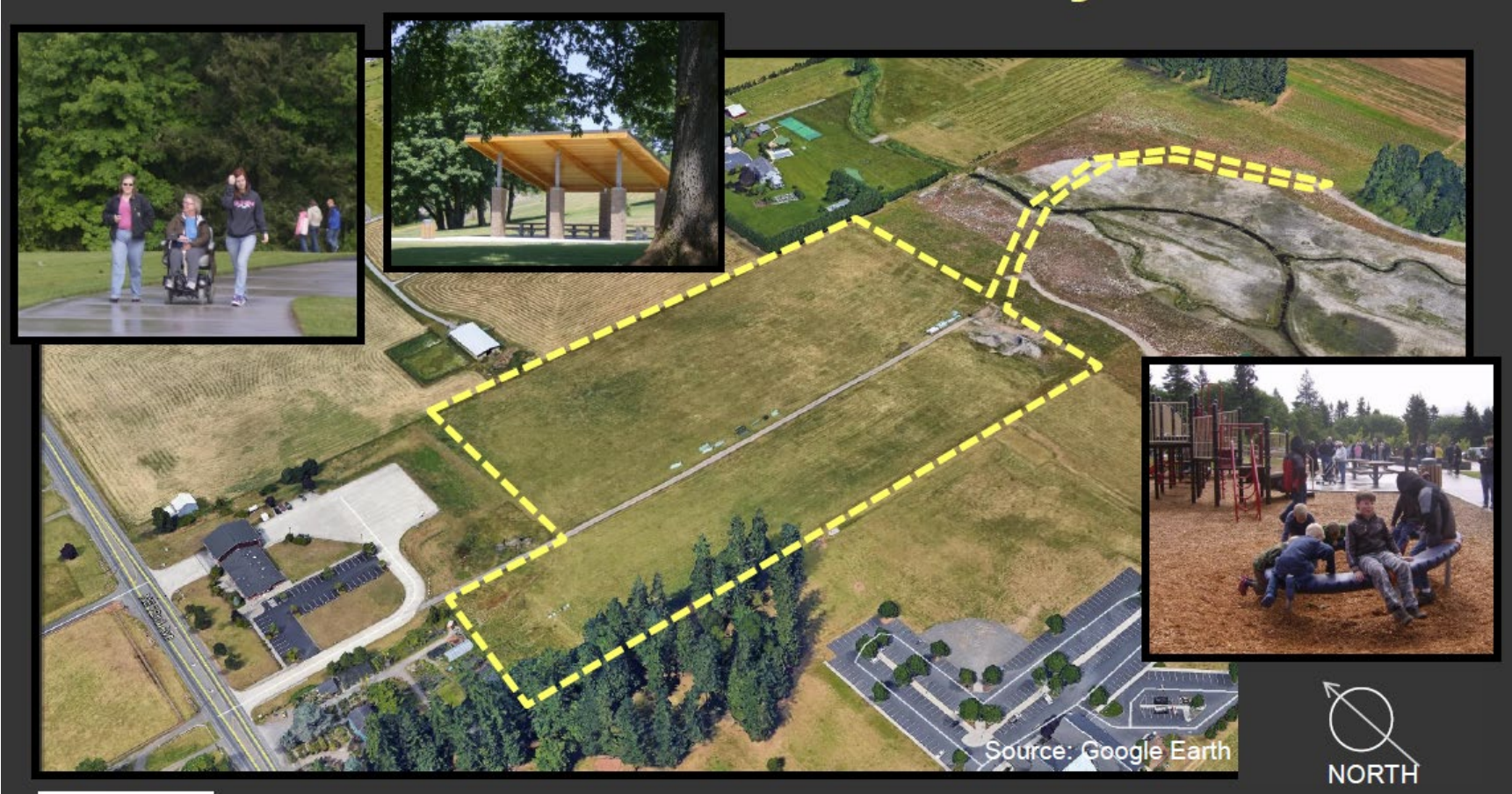
Cantata Chimes



- **Engineer’s Estimate - \$582,450**
- **Scheduled Bid Opening Date – June 8, 2021**
- **Construction Completion Date – October 15, 2021**



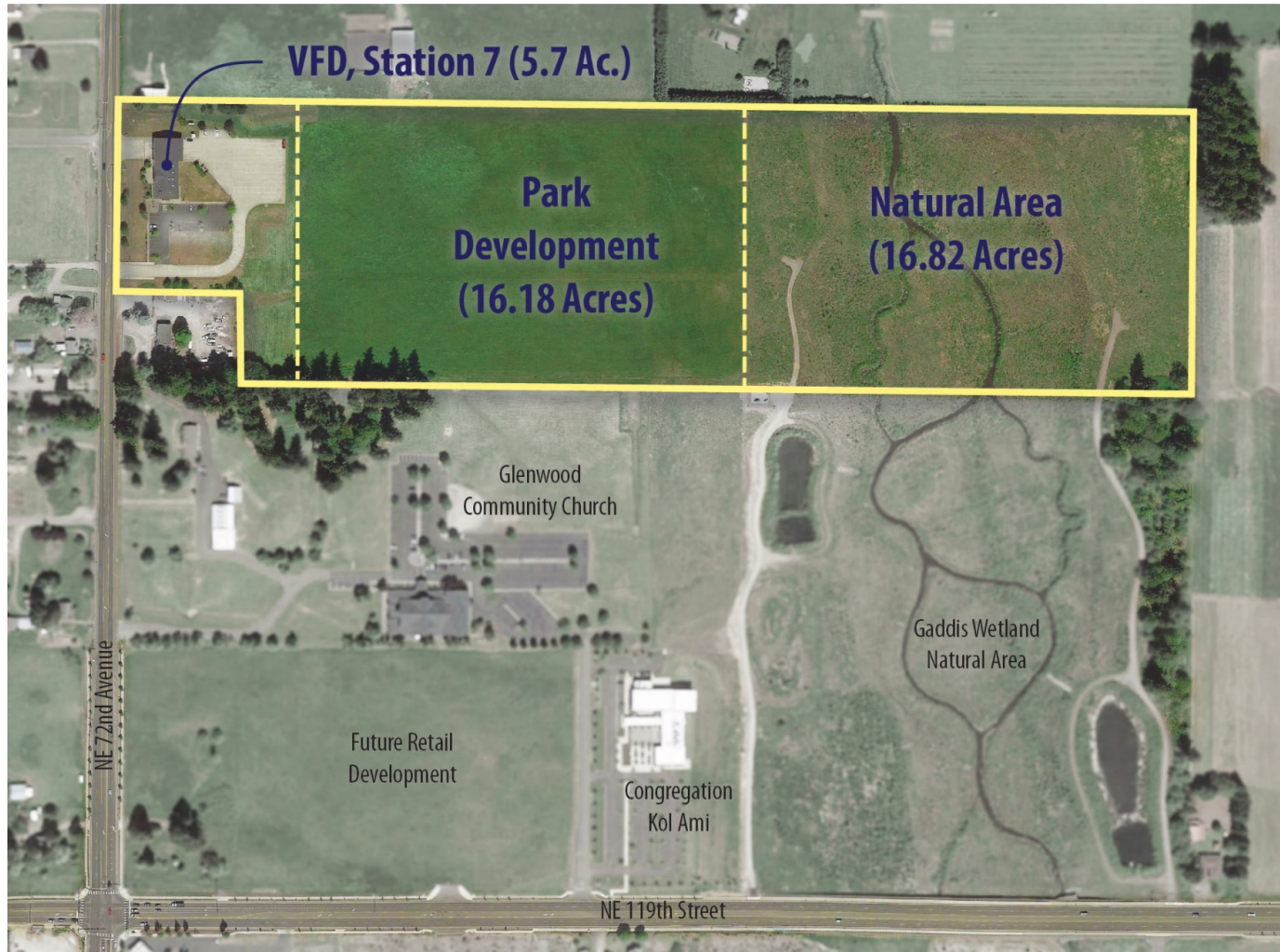
# Curtin Creek Community Park





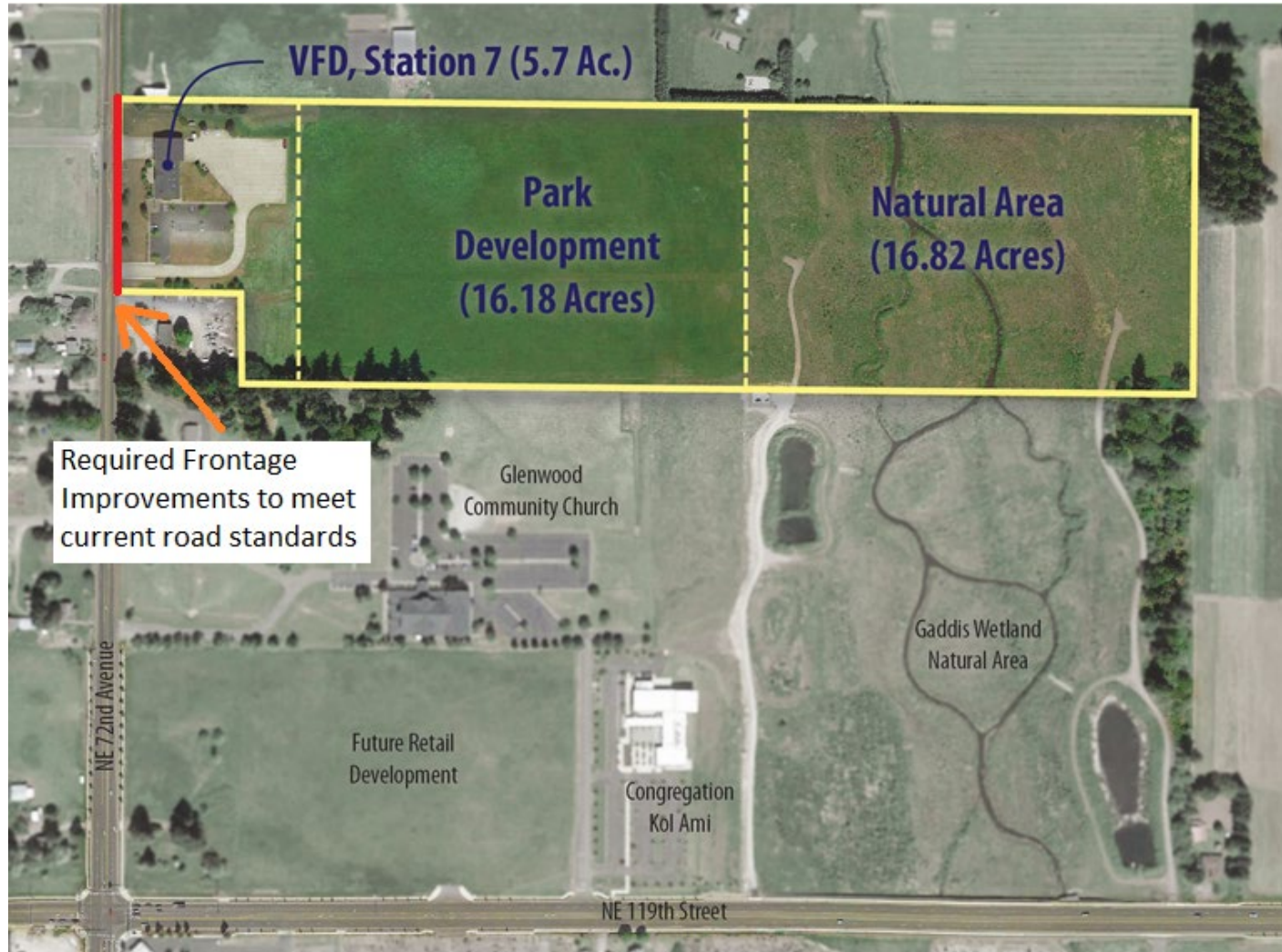
# Curtin Creek Community Park

Project #: 405762A



# Curtin Creek Community Park

Project #: 405762A





## **Phase 1 - Public Outreach / Master Planning Process**

- ✓ **Stake Holder Interviews**
- ✓ **News Release/Direct Mailings (7,600+)**
- ✓ **Web Site & On-Line Survey (600+ participated)**
- ✓ **Open House (November 13, 2019 – 100+ Attended)**

## **Phase 2 - Design/ROW/Permitting**

## **Phase 3 - Construction**



# Curtin Creek Community Park

Project #: 405762A

	2019		2020				2021			2022			2023					
Phase 1 - Public Outreach / Master Plan Development Process																		
COVID Delay																		
Phase 2 - Design/ROW/Permitting																		
Phase 3 - Construction																		

