

# COVID-19 update

---

Alan Melnick, MD, MPH, CPH

June 8, 2021



# Washington

---

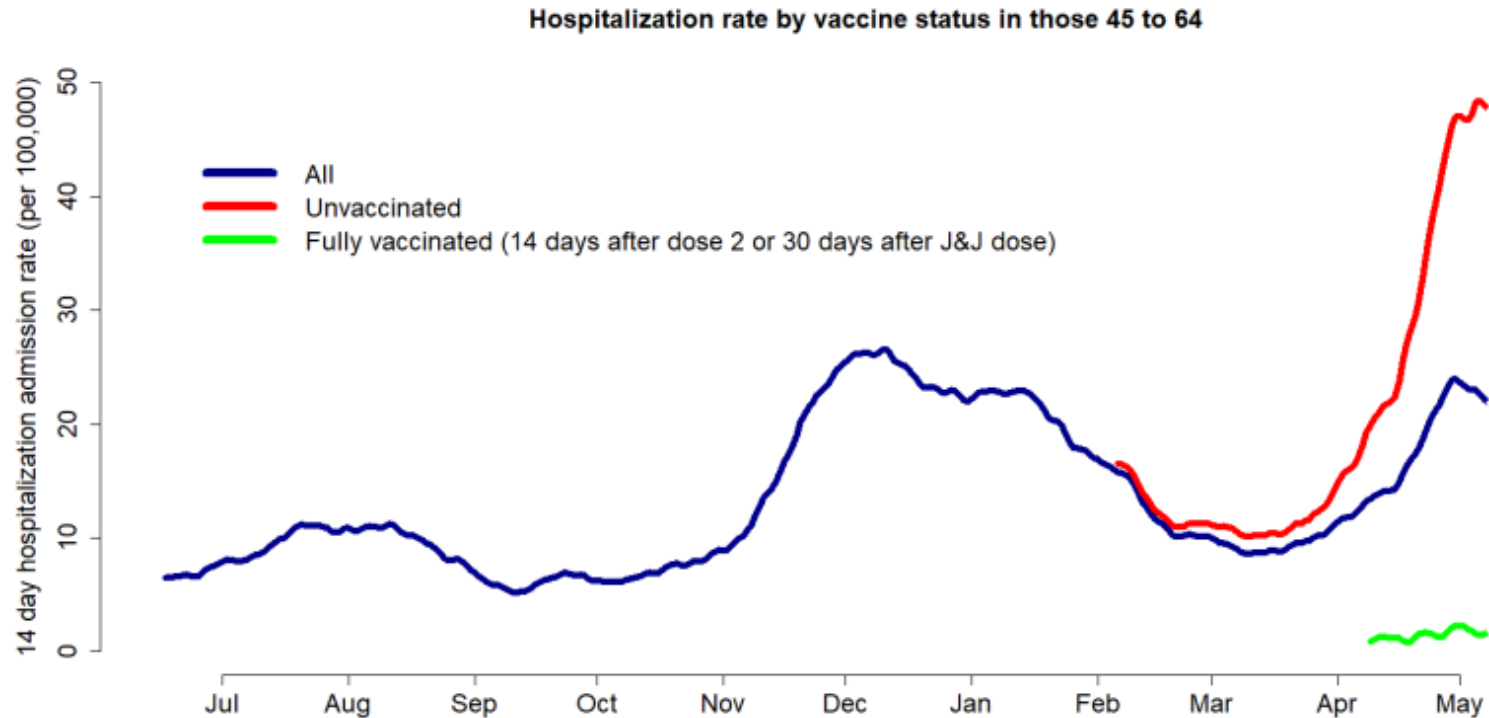
According to the state situation report issued June 5:

- Statewide case counts continue to decline.
  - Five largest counties are seeing declines.
  - 31 of 39 counties had rates of less than 200 cases per 100,000 over 14 days.
- Case rates are declining across all age groups, except people 70 years and older, among whom rates have stayed mostly flat since March.
  - Hospital admission rates are similar – declining among people ages 20-69 and remaining flat but high in ages 70 and older.
- Number of hospital beds occupied by COVID-19 patients is declining.
  - Number of ICU beds occupied by COVID-19 patients has remained fairly flat.
- While case numbers are decreasing, the level of virus transmission was still fairly high as of mid-May.
  - Estimated reproductive number: 0.95



# Washington

- The hospital admission rate in unvaccinated people ages 45-64 is about **21 times higher** than people of the same age who are fully vaccinated.
  - For people ages 65 and older, the hospital admission rate is about **13 times higher** among people who are unvaccinated than those who are fully protected.



# Hospitalization of adolescents

---

- CDC's June 4 Morbidity and Mortality Weekly Report looked at COVID-19 hospitalizations among adolescents 12-17 years old.
  - COVID-19 hospitalization rates among adolescents increased March-April 2021.
  - COVID-19 hospitalization among adolescents exceeded historical rates of influenza hospitalizations.
- Adolescent COVID-19 hospitalization rates from October 2020 to April 24, 2021 were **2.5-3 times higher** than influenza-associated hospitalization rates from the three previous flu seasons.
- 31% of adolescents hospitalized for COVID-19 from Jan. 1 to March 31, 2021 were admitted to an ICU.
  - 5% required invasive mechanical ventilation
  - No deaths



# Hospitalization of adolescents

---

- Among adolescents hospitalized, most were female (53%), Hispanic or Latinx (31%), Black (36%) and had at least one underlying health condition (71%).
  - Most common health conditions: obesity (36%), chronic lung disease, including asthma (31%), neurologic disorders (14%).
- After declines in January and February 2021, COVID-19 hospitalizations among adolescents increased in March and April.
  - Hospitalization rates among people 65+ years old – the group with the highest COVID-19 vaccination rate – stabilized during the same time period.
- Increased hospitalizations among adolescents may be attributed to circulation of more transmissible variants, more students returning to school and other in-person indoor activities, and changes in preventive measures.
  - Vaccination of adolescents is expected to reduce risk in these settings.
- Increased rates of adolescent hospitalization and potential for severe disease reinforce the importance of continued preventive measures among adolescents, including vaccination and mask wearing.



# Clark County

---

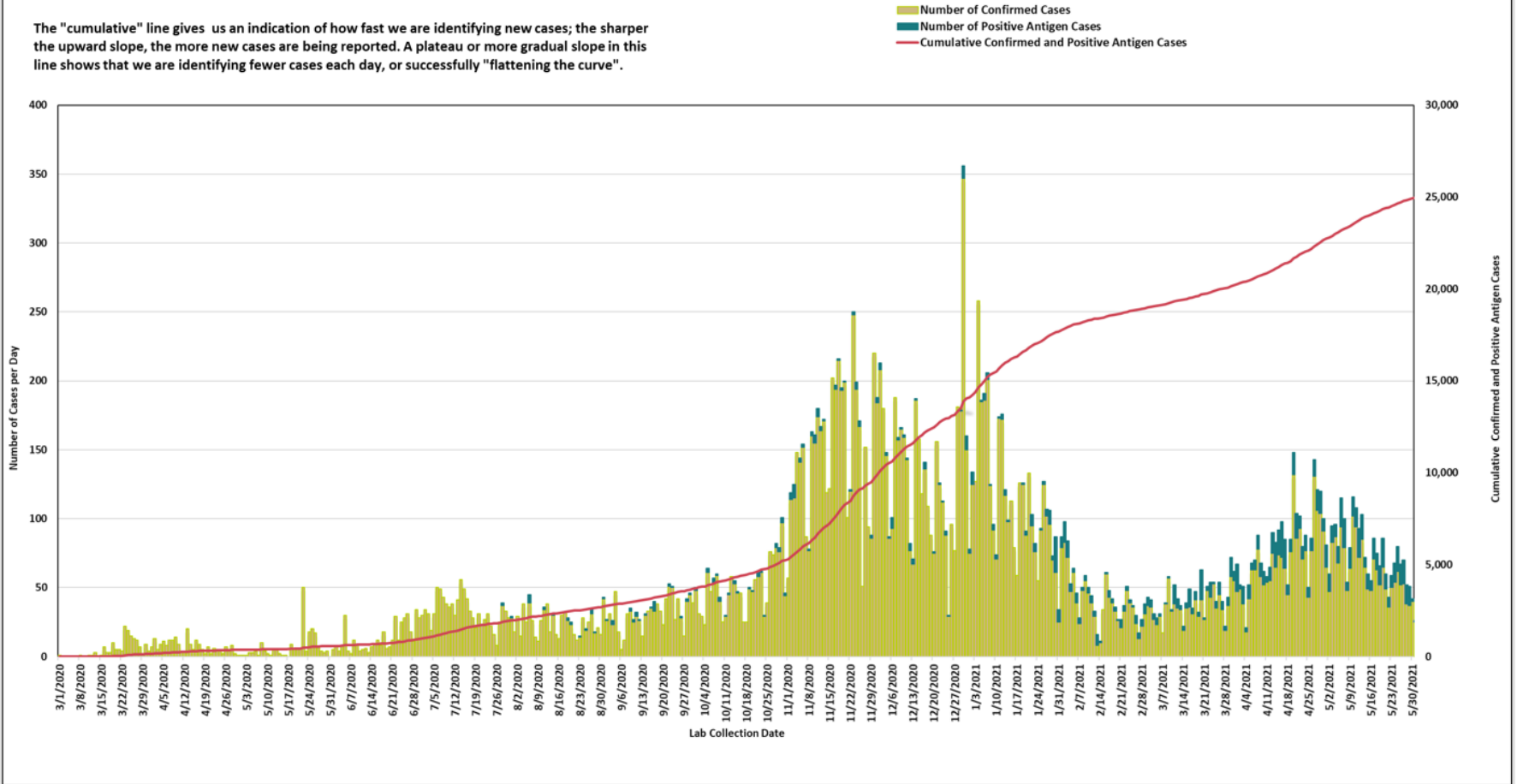
- Case numbers are decreasing.
  - A month ago, we were averaging nearly 100 cases per day.
  - Over the last two weeks, we've averaged 61 cases per day.
- Clark County's COVID-19 activity rate is decreasing.
  - Rate reached 276.6 on May 10 but has decreased each week since.
  - This week, the rate decreased to 194.1, first time below 200 since late-April.
- Clark County continues to see 7-9% of hospital beds occupied by COVID-19 cases.
  - That's about 40-60 COVID cases and people suspected to have COVID-19 (awaiting test results) hospitalized.
- Recently, ICU beds occupied has been high in Clark County (more than 90%).



# Clark County

Clark County Confirmed & Positive Antigen COVID-19 Cases, by Lab Collection Date

The "cumulative" line gives us an indication of how fast we are identifying new cases; the sharper the upward slope, the more new cases are being reported. A plateau or more gradual slope in this line shows that we are identifying fewer cases each day, or successfully "flattening the curve".



# SARS-CoV-2 variants

---

- Vast majority of SARS-CoV-2 infections in Washington state continue to be attributed to variants of concern.
  - Estimated 75% of cases are attributed to B.1.1.7 and about 8% are attributed to P.1.
  - Cases attributable to B.1.1.7 continue to grow, whereas growth in P.1. cases appears to be flattening.
- The state is not sequencing samples from every confirmed COVID-19 case, but the number of specimens sequenced and the percent of confirmed cases that have had sequencing performed continues to increase.
  - During the month of April, 17.4% of all confirmed COVID-19 cases were sequenced.





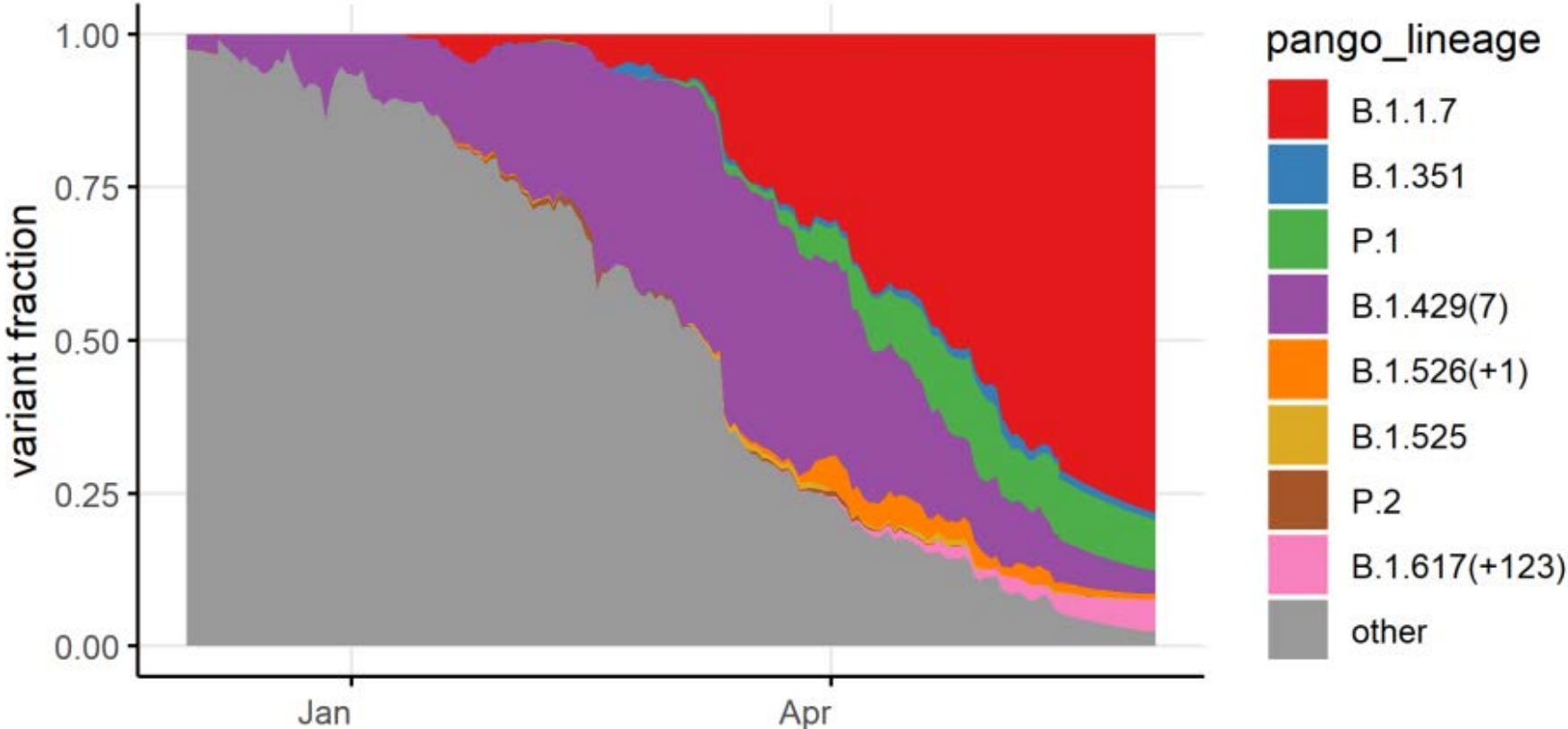
# SARS-CoV-2 variants

---

- B.1.1.7 (UK):
  - Spreads more easily and quickly than other variants.
    - About 50% increased transmission
  - Potential increased severity based on hospitalizations and case fatality rates.
  - So far, studies suggest the COVID-19 vaccines are effective against the B.1.1.7 variant.
- B.1.427 and B.1.429 (California):
  - Evidence they are slightly more contagious
    - About 20% increased transmission
  - Some COVID-19 antibody treatments may be less effective against the strains.
- P.1 (Brazil)
  - Evidence suggests some mutations of P.1 variant may affect the ability of antibodies (natural and from vaccine) to recognize and neutralize the virus.
  - Some COVID-19 antibody treatments may be less effective against the strains.



# SARS-CoV-2 variants



# Healthy Washington – Roadmap to Recovery

---

- Every county in the state is currently in Phase 3.
- On June 30, the state will reopen and most public spaces will return to full capacity.
  - The reopening could happen earlier than June 30 if 70% or more of Washington residents 16 years or older have at least one dose of COVID-19 vaccine.
- The reopening plan could change if the state's COVID-19 data changes or if the state's ICU capacity reaches 90% at any point.



# COVID-19 vaccine administered

---

as of Saturday, June 5

## Washington state

- **7.3 million** doses administered
- **3.9 million** residents have received at least one dose
  - 64% of residents 16+ years (51% all ages)
- **3.4 million** residents are fully vaccinated
  - 55% of residents 16+ years (45% all ages)

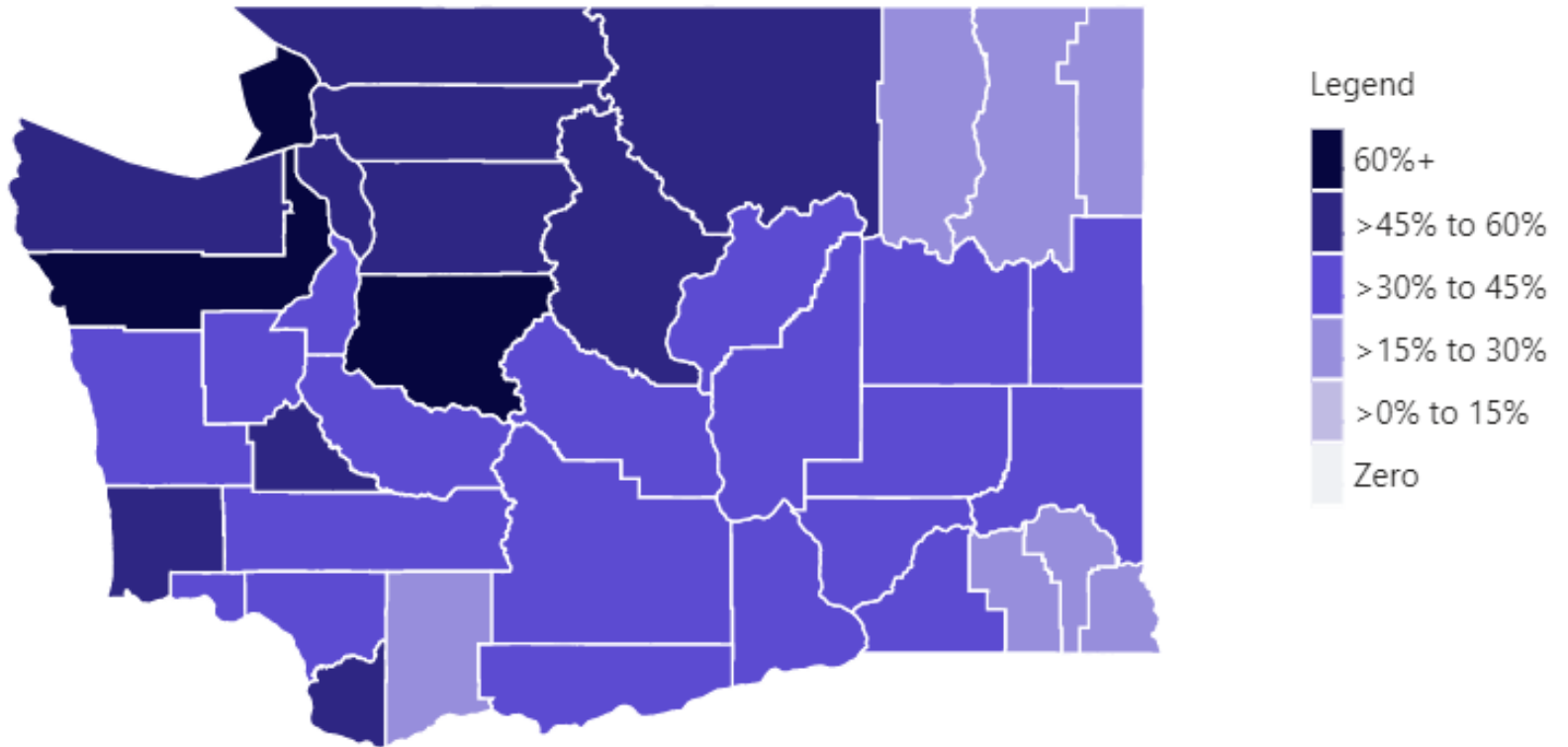
## Clark County

- **414,483** doses administered in Clark County
- **228,763** residents have received at least one dose
  - 58% of residents 16+ years (46% all ages)
- **195,845** residents are fully vaccinated
  - 49% of residents 16+ years (39% all ages)



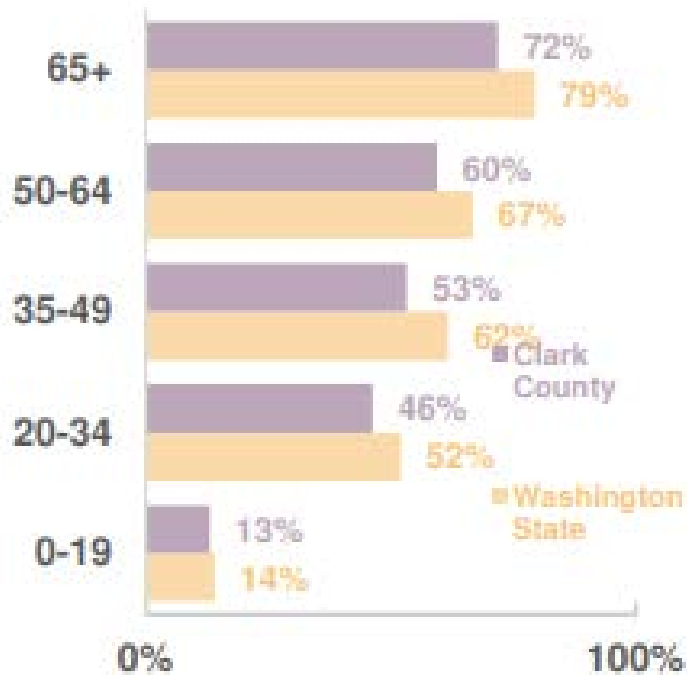
# COVID-19 vaccine administered

TOTAL POPULATION INITIATING VACCINATION (RECEIVING AT LEAST 1 DOSE)

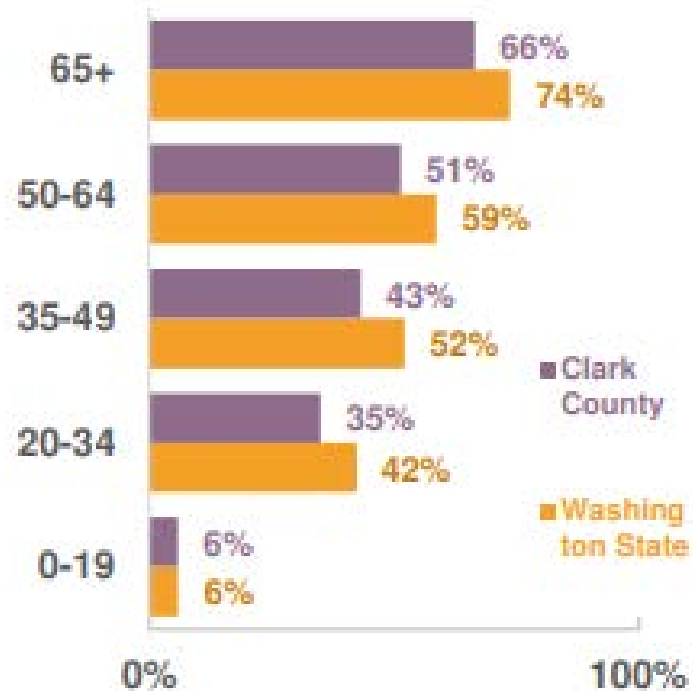


# Demographics of people vaccinated

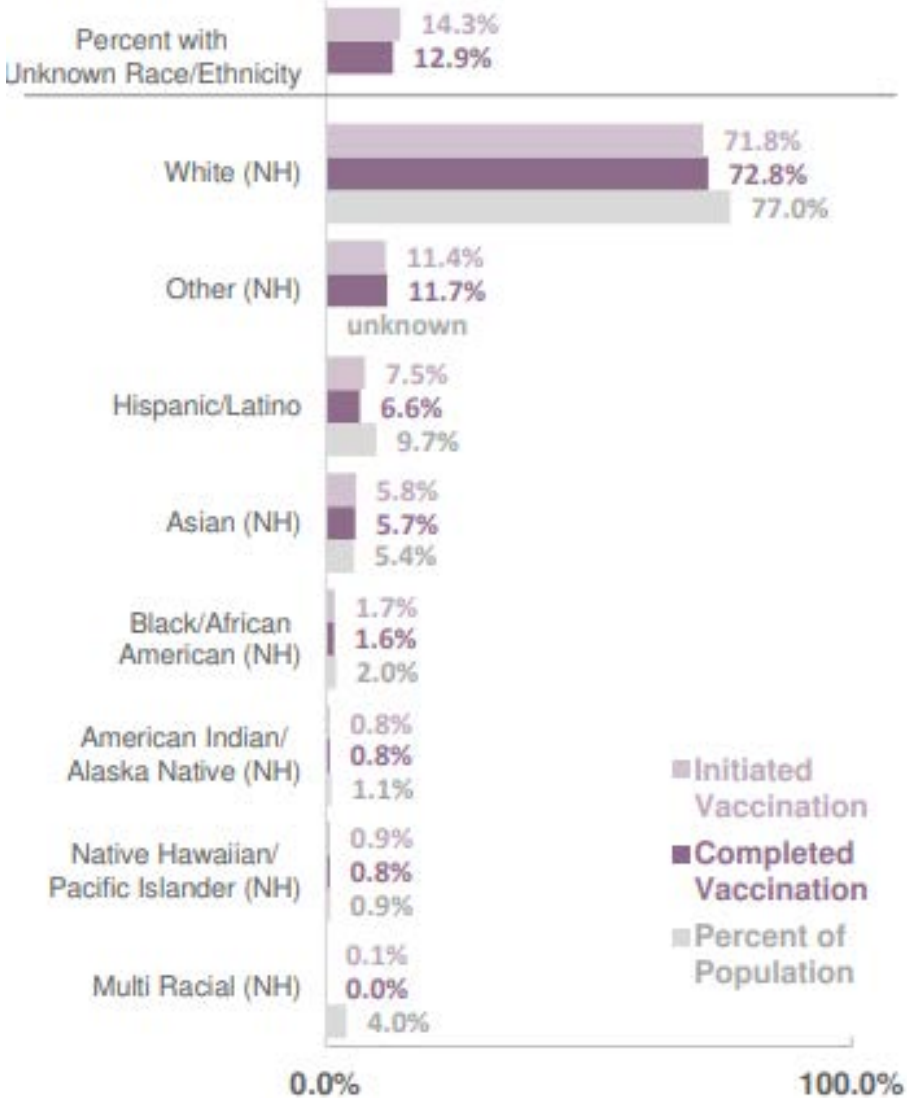
Percent of population in each age group who have **initiated\*** COVID-19 vaccination



Percent of population in each age group who **completed** COVID-19 vaccination



### Racial/ethnic breakdown of people in Clark County who are vaccinated against COVID-19 (among those with a known race/ethnicity)



# Public Health vaccination efforts

---

- Public Health continues efforts to make COVID-19 vaccine easily accessible by hosting vaccination clinics throughout the county.
- Last week, we hosted vaccination clinics in Yacolt and Woodland.
  - Administered nearly 50 doses of Pfizer and Johnson & Johnson vaccine in Yacolt.
    - We'll return June 23 to provide Pfizer second doses.
  - Administered nearly 200 doses of Pfizer and Johnson & Johnson vaccine in Woodland.
    - Provided second doses for those who received a first dose during our May 8 clinic, as well as Pfizer first doses and J&J.
- This Saturday, we'll return to Hathaway Elementary School in Washougal to provide Pfizer second doses to people who received first doses on May 22.
  - We will also offer Pfizer first doses and Johnson & Johnson.





# Public Health vaccination efforts

---

- Public Health is also vaccinating people who are homebound and those who are unhoused.
  - Vaccinating homebound residents as we receive requests.
    - Plan to vaccinate at least 5 homebound residents this week.
  - Next week, we will return to a local shelter providing services to people who are unhoused to offer Johnson & Johnson vaccine.
- Public Health continues to partner with city of Vancouver and Safeway to operate the Tower Mall vaccination site.
- With vaccine now readily available at local pharmacies and medical offices, we've decided to close the Tower Mall site at the end of the month.
  - Tuesday, June 29 will be the last day of operations.
  - We will continue to offer first and second doses of Pfizer through the last day of operations.
  - People who receive a first dose after June 8 can go to a local Safeway or Albertsons pharmacy, or another local site offering Pfizer, for their second dose.



# Public Health IMT

---

- Public Health's incident management team (IMT) is preparing to demobilize.
- IMT response began in January with the arrival of a federal Type 1 team in Southwest Washington.
- In late February, the Type 1 team transitioned work to the Southwest Washington Regional IMT.
  - The regional team has been staffed largely by Clark County Public Health, with some additional contracted staff experienced in incident command.
- The IMT is working on a demobilization plan that will integrate COVID-19 vaccine response work into Public Health programs.
  - Plan to have transition complete by June 30.

