



# Battle Ground Non-Motorized Transportation Action Plan

Presentation to Clark Communities Bicycle and Pedestrian Advisory Committee

Chuck Green, PE, Otak 1/25/22





# Battle Ground Non-Motorized Transportation Action Plan (NMTAP)

Primarily focused on Battle Ground City Limits, secondarily BG Urban Growth Area

Non-motorized transportation: bicycles, pedestrians, transit access

Identify gaps and barriers to non-motorized travel

Projects, processes and programs to overcome

Loops and Corridors and Wayfinding

NMTAP to be completed March 31, 2022

Wayfinding Plan to be completed summer 2022



# Criteria for Loops & Corridors

## Identifying Loops & Corridors

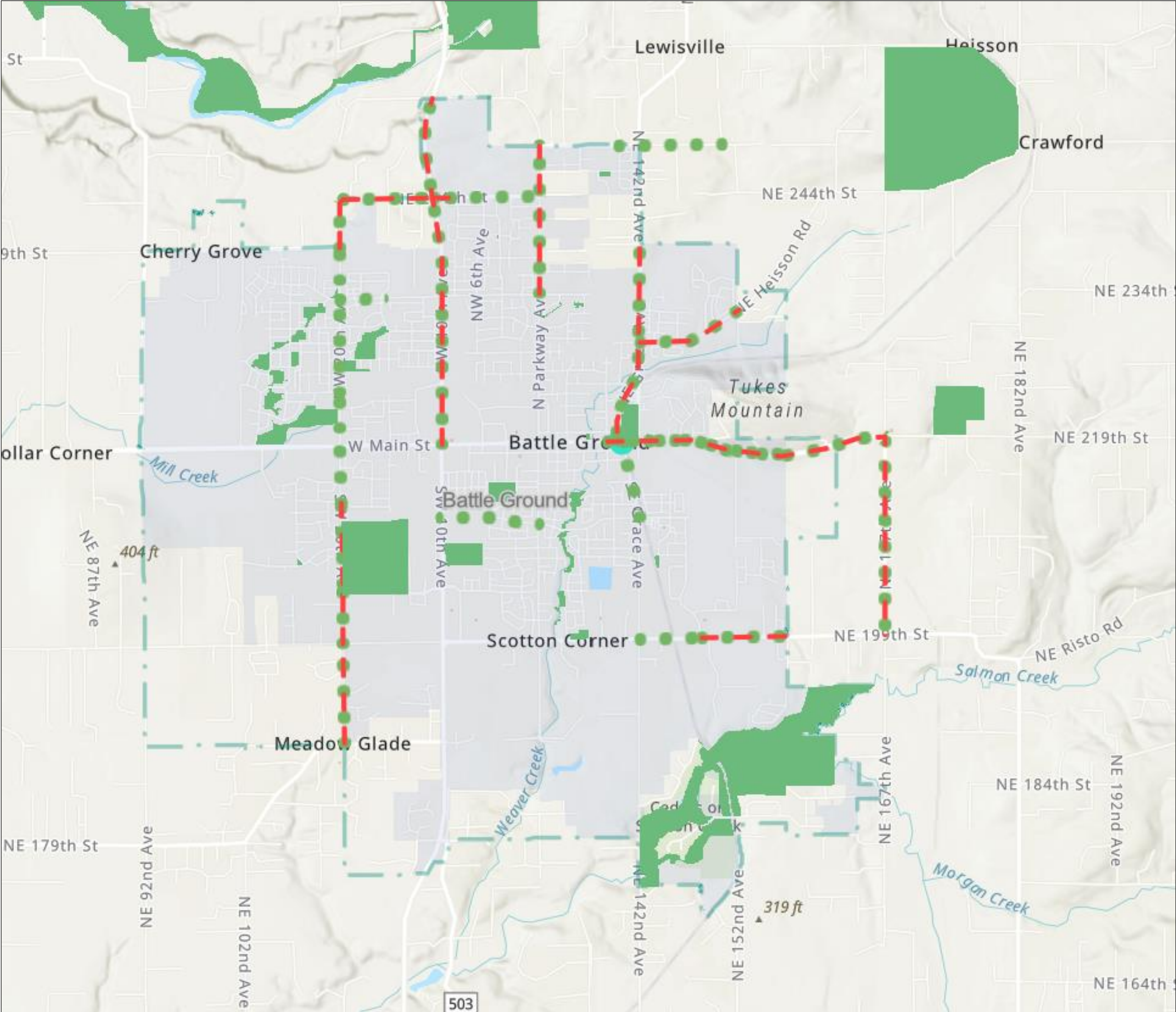
- What we heard from survey, stakeholder interviews
- Stay within City Limits, 4-5 miles maximum length
- Prefer all ages & abilities
- Key destinations or landmarks along the route, such as:
  - Battle Ground Village
  - Old Town Main Street
  - City Hall
  - Library
  - Medical/ services
  - Schools
  - Parks & Recreational Facilities
  - Stores, Restaurants & Other Establishments of note
- “Theme” or identity of various loops

## Evaluating Loops & Corridors

- Cycle Clark County map of bike routes and condition
- Inclusion in Transportation System Plan, ADA Transition Plan and other inventories
- Bicycle level of traffic stress, pedestrian level-of-service
- Safety: bicycle and pedestrian collision history
- Number and scale of Gaps/barriers along route
- Destinations – potential for bike and pedestrian trip generation or attraction
- Zoning, socio-economic data (2020 Census if available)
- Access/ parking availability
- Projects funded in TIP or other programs
- Cost to implement
- Future Corridors need coordination between City and Clark County



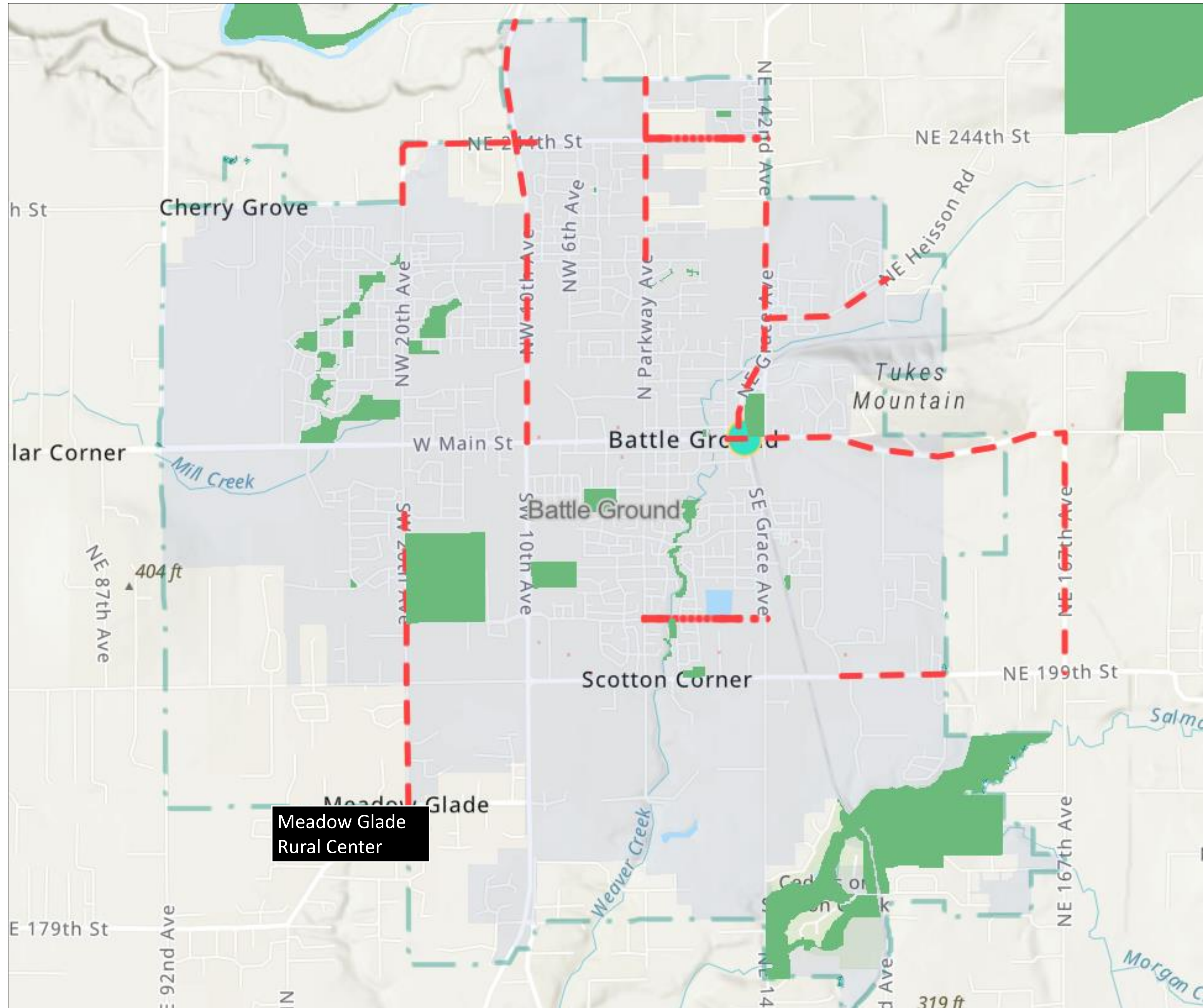
# Battle Ground's Non-Motorized Gaps and Barriers



Legend	
<b>Parks</b>	
<b>Gaps &amp; Barriers</b>	
No Pedestrian Facilities	
No Bicycle Facilities	
Partial or Discontinuous Bicycle Facilities	
Partial or Discontinuous Pedestrian Facilities	
No Crosswalk	
CityBoundary - City Limits	
Battle Ground Urban Growth Boundary	



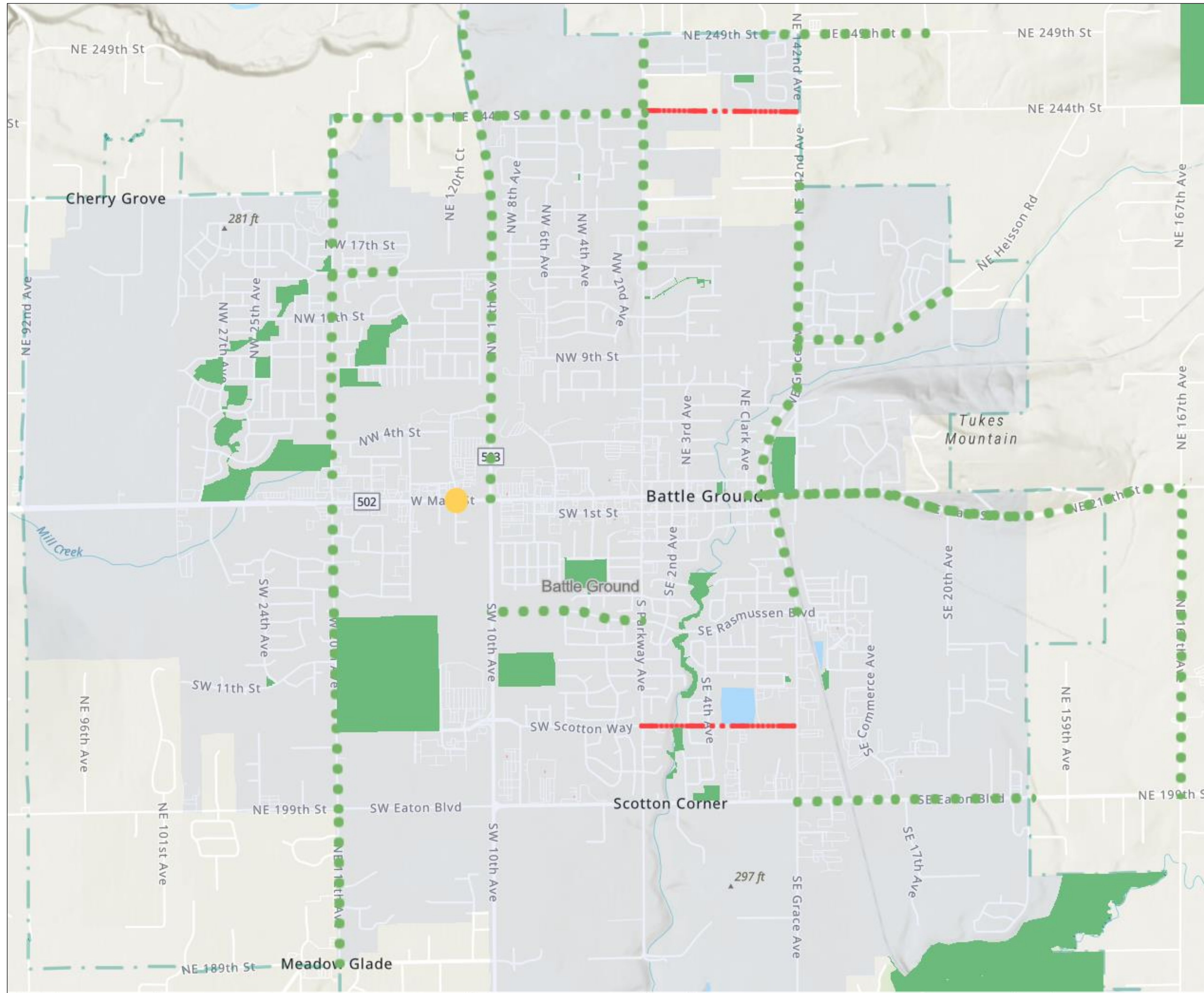
# Battle Ground's Non-Motorized Gaps and Barriers Pedestrian Travel



Legend	
<b>Gaps &amp; Barriers</b>	
No Pedestrian Facilities	---
Partial or Discontinuous Pedestrian Facilities	-.-.-
No Connection	.....
No Corridor	-.-.-.-
No Crosswalk	█
Poor Lighting	█
<b>CityBoundary - City Limits</b>	
	▭
<b>Battle Ground Urban Growth Boundary</b>	
	▭



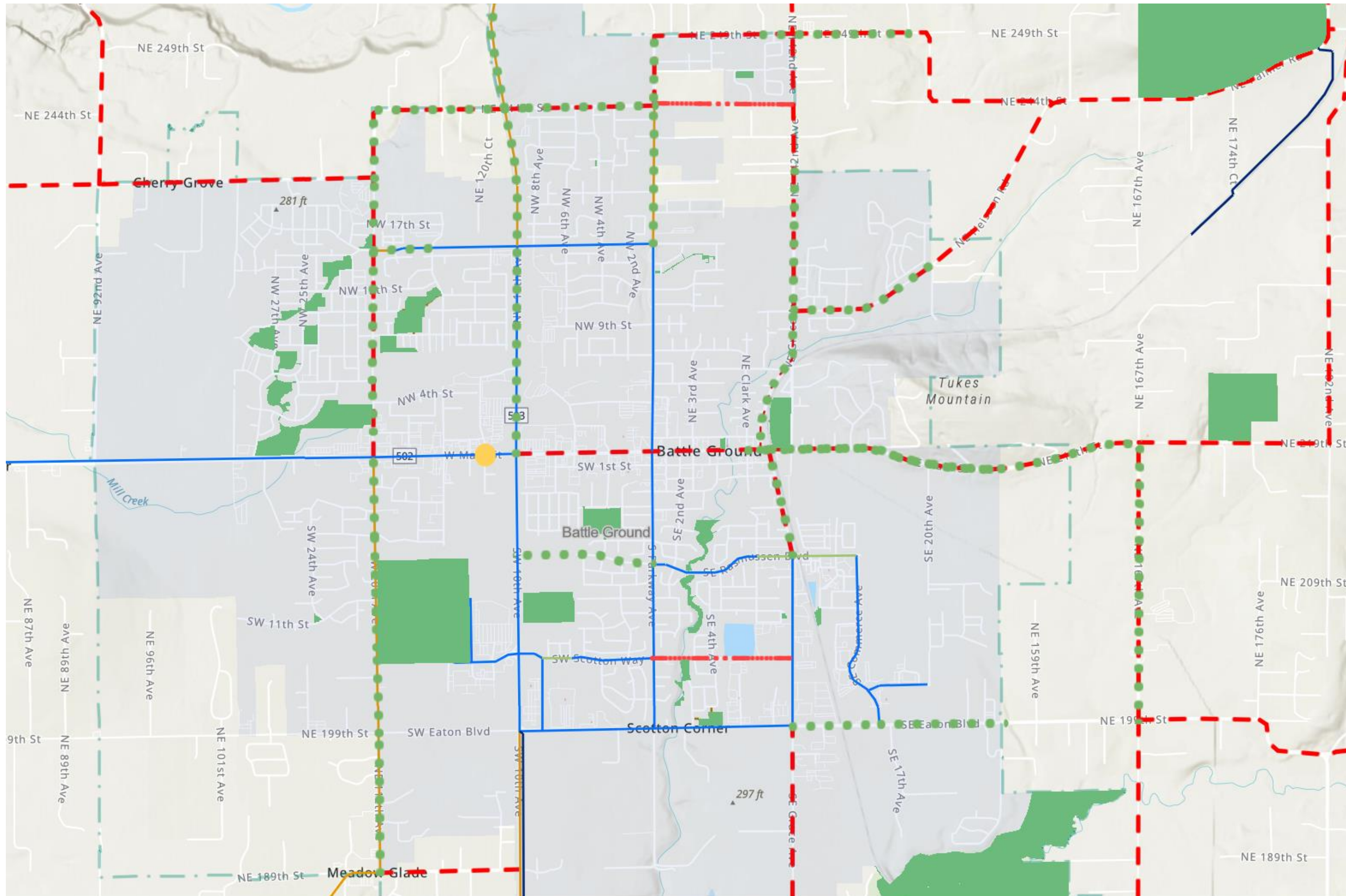
# Battle Ground's Non-Motorized Gaps and Barriers Bicycle Travel



Legend	
<b>Parks</b>	
<b>Gaps &amp; Barriers</b>	
No Bicycle Facilities	
Partial or Discontinuous Bicycle Facilities	
No Connection	
No Corridor	
Poor Lighting	
City Boundary - City Limits	
Battle Ground Urban Growth Boundary	



# Battle Ground's Non-Motorized Gaps and Barriers Bicycle Travel – With County Bike Route Map



MA | County of Clark, WA, State of Oregon GEO, WA State Parks GIS, Esri, Canada, Esri, HERE, Garmin, SafeGraph, INCREMENT P, METI/NASA, USGS, Bureau of Land Management, EPA, NPS, US Census Bureau, USD

**Legend**

- No Bicycle Facilities**  
● ● ●
- Partial or Discontinuous Bicycle Facilities**  
● ● ●
- Poor Lighting**  
●
- CityBoundary - City Limits**  
■

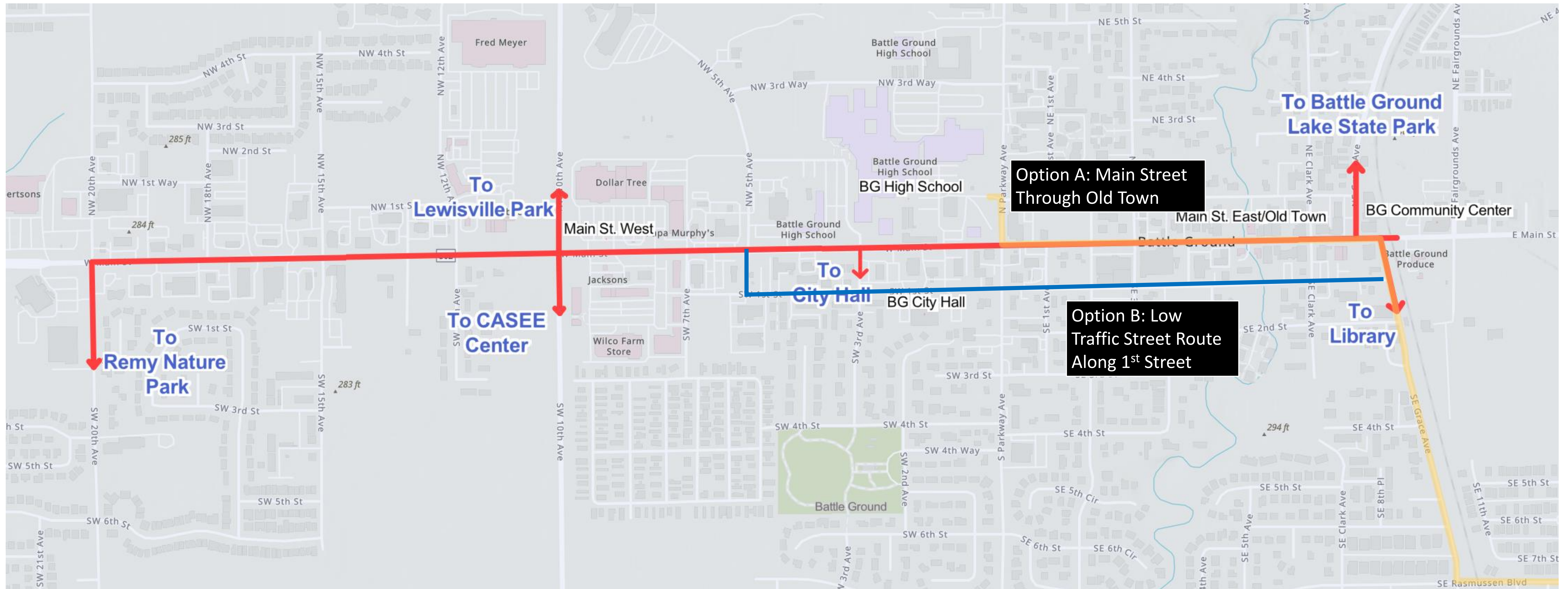
**Clark County Bike Route Map**

**Route Type**

- Bike Lanes or wide shoulders, usually on higher traffic streets
- Shared Roadway, on lower traffic street
- Shared Roadway, with wider outside Lane on moderate and higher traffic street
- - - Difficult Connection
- - - Shared Roadway/Difficult Connection, lower traffic street with sight limitations and higher speeds
- Paved Multi-use Paths, closed to motor vehicles
- - - Unpaved Multi-use Paths, closed to motor vehicles
- Cyclists Prohibited

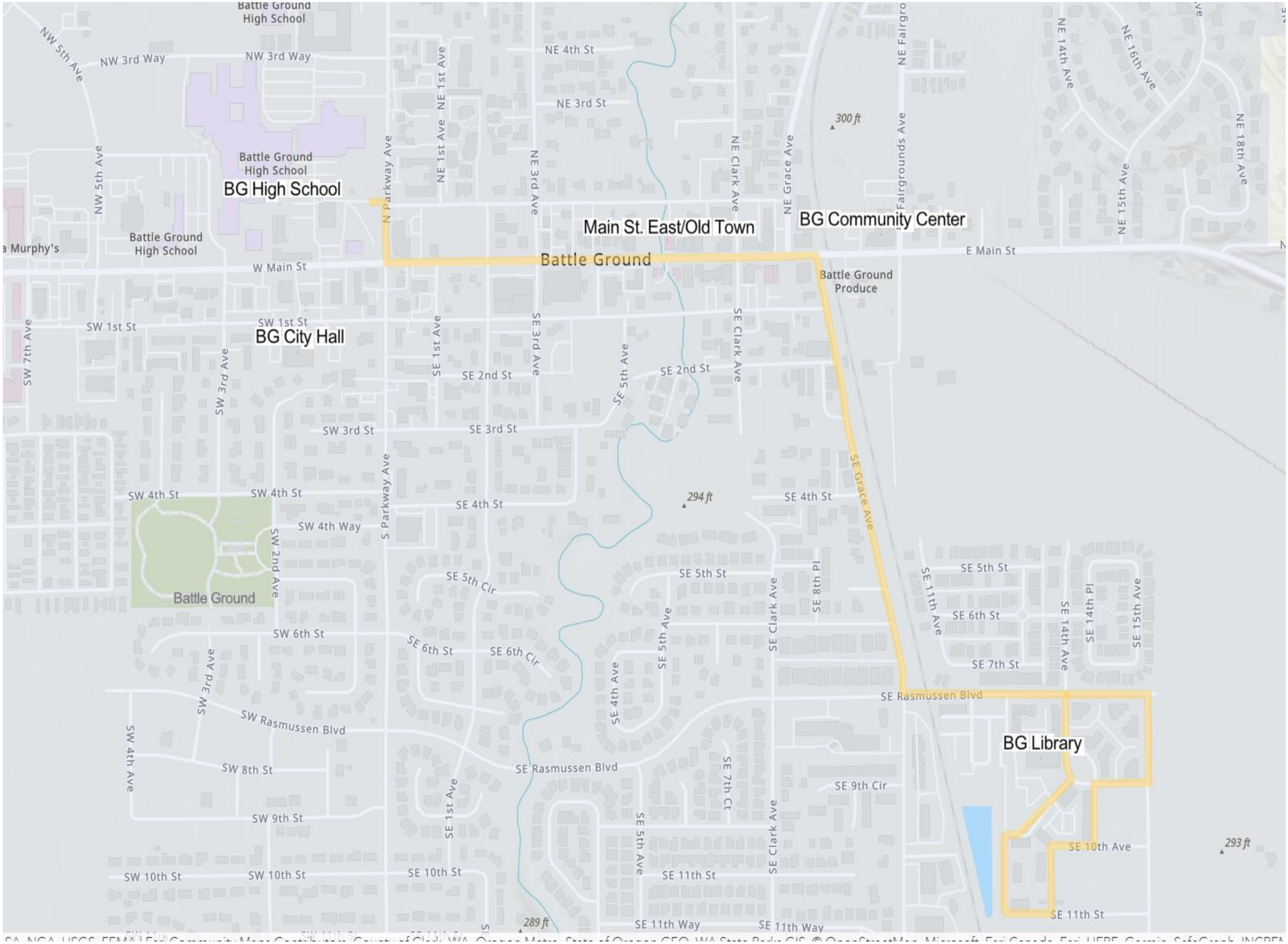


# Battle Ground's Main Street – Two Options



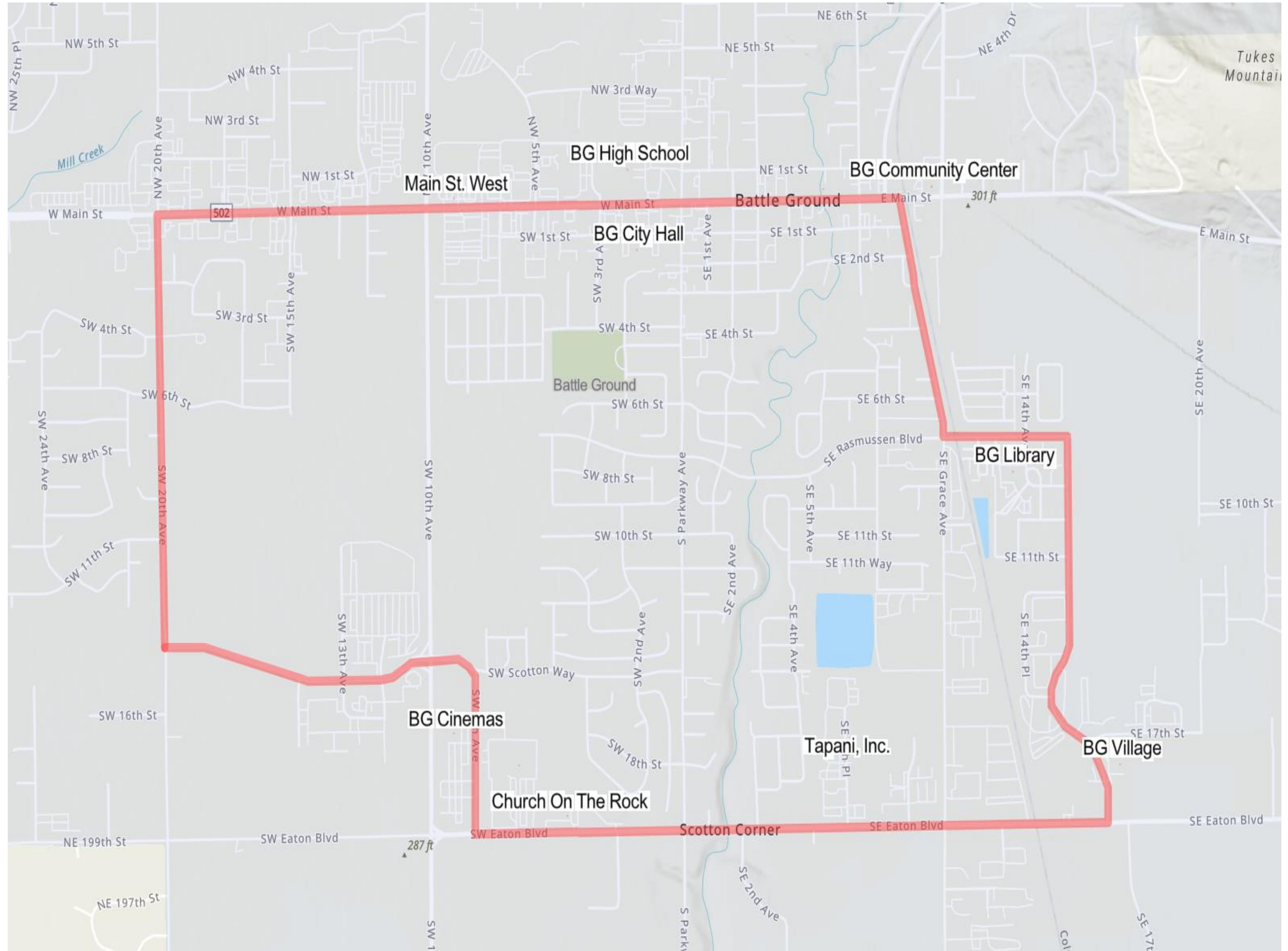


Old Town/  
Village Loop



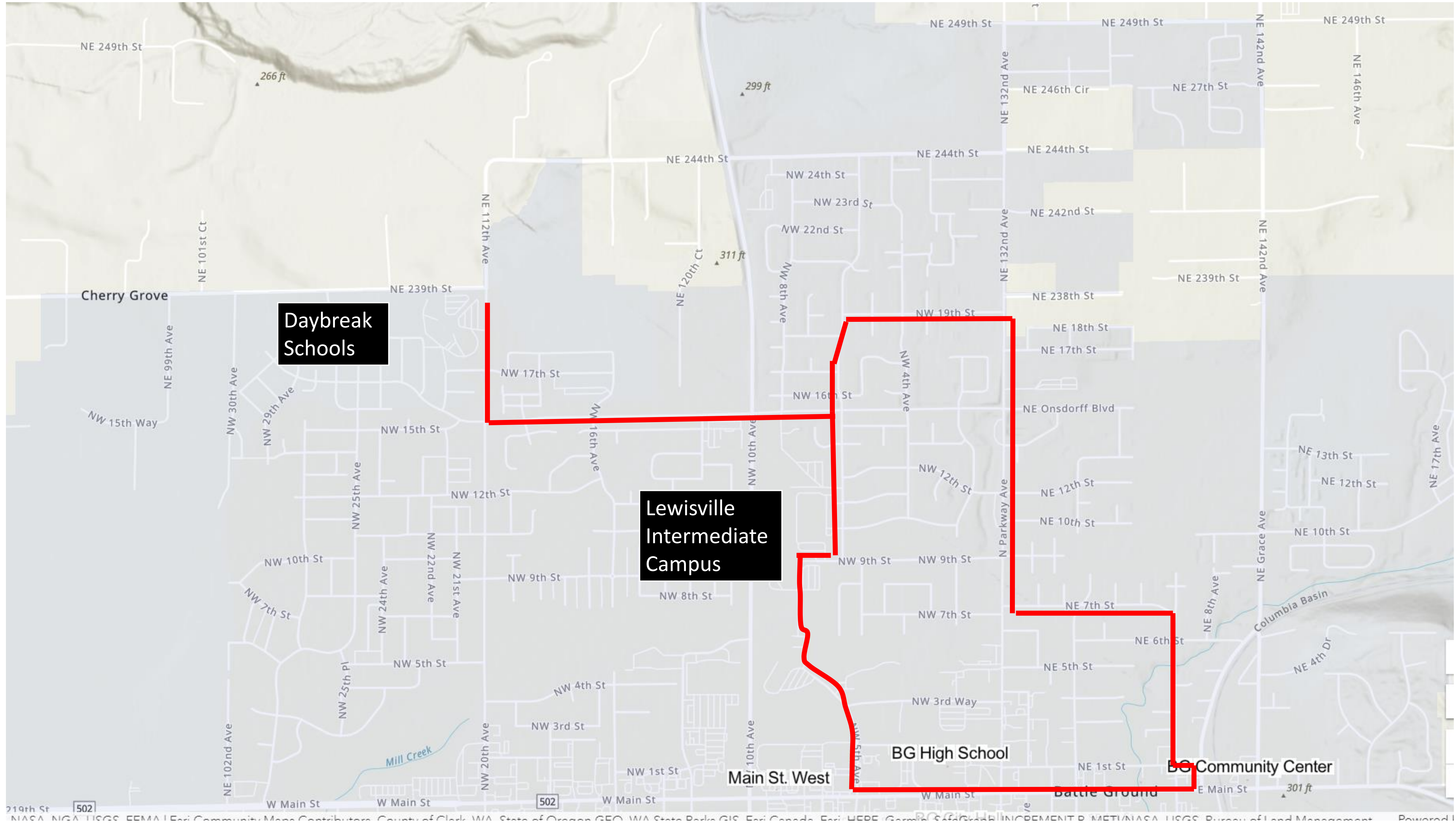


Battle Ground South Loop





# Battle Ground North Loop





# Future Loops

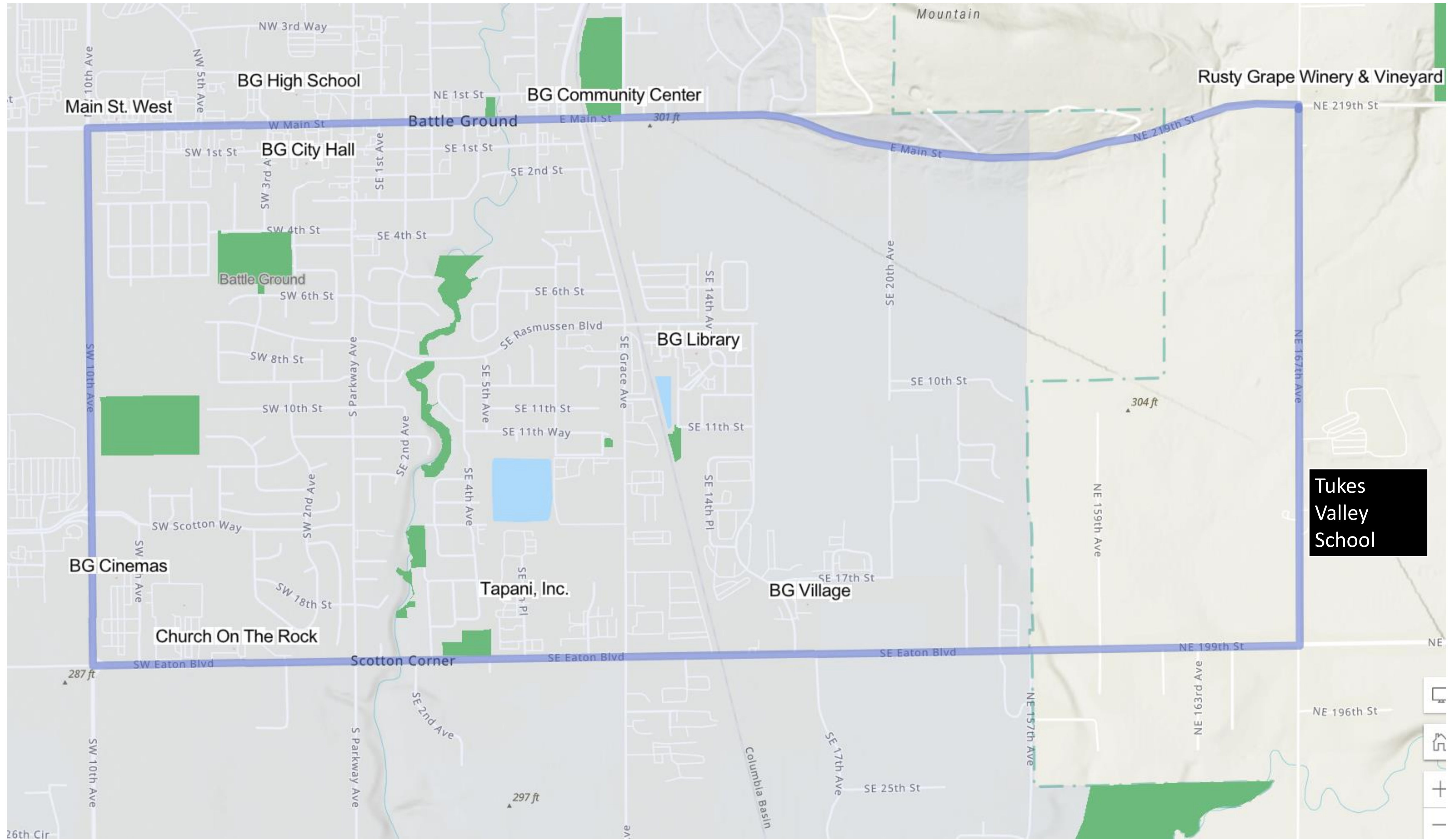
---

Will Need Future Coordination  
between Battle Ground and  
Clark County



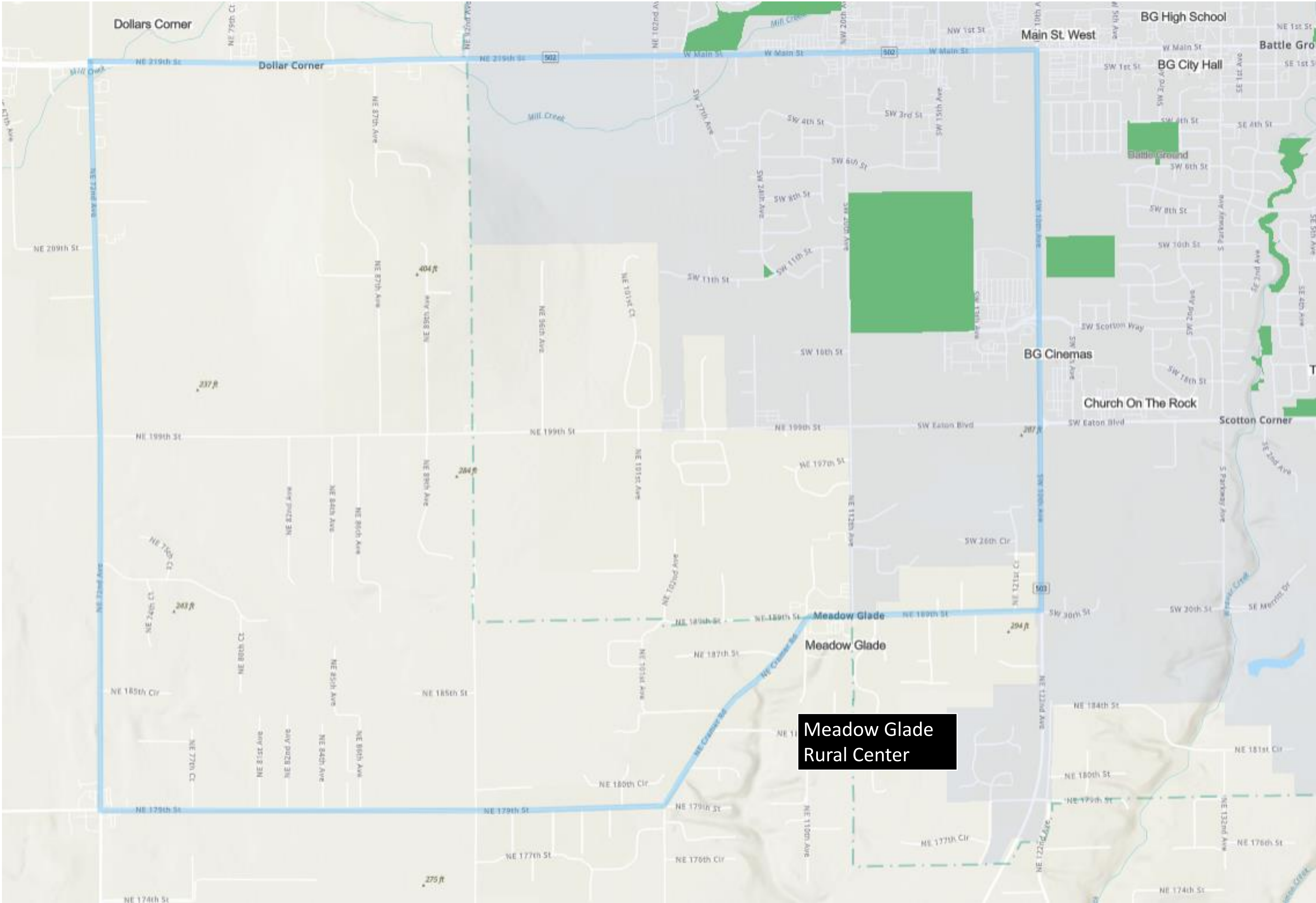


Tukes Valley Loop





Meadow  
Glade/  
Dollars  
Corner Loop

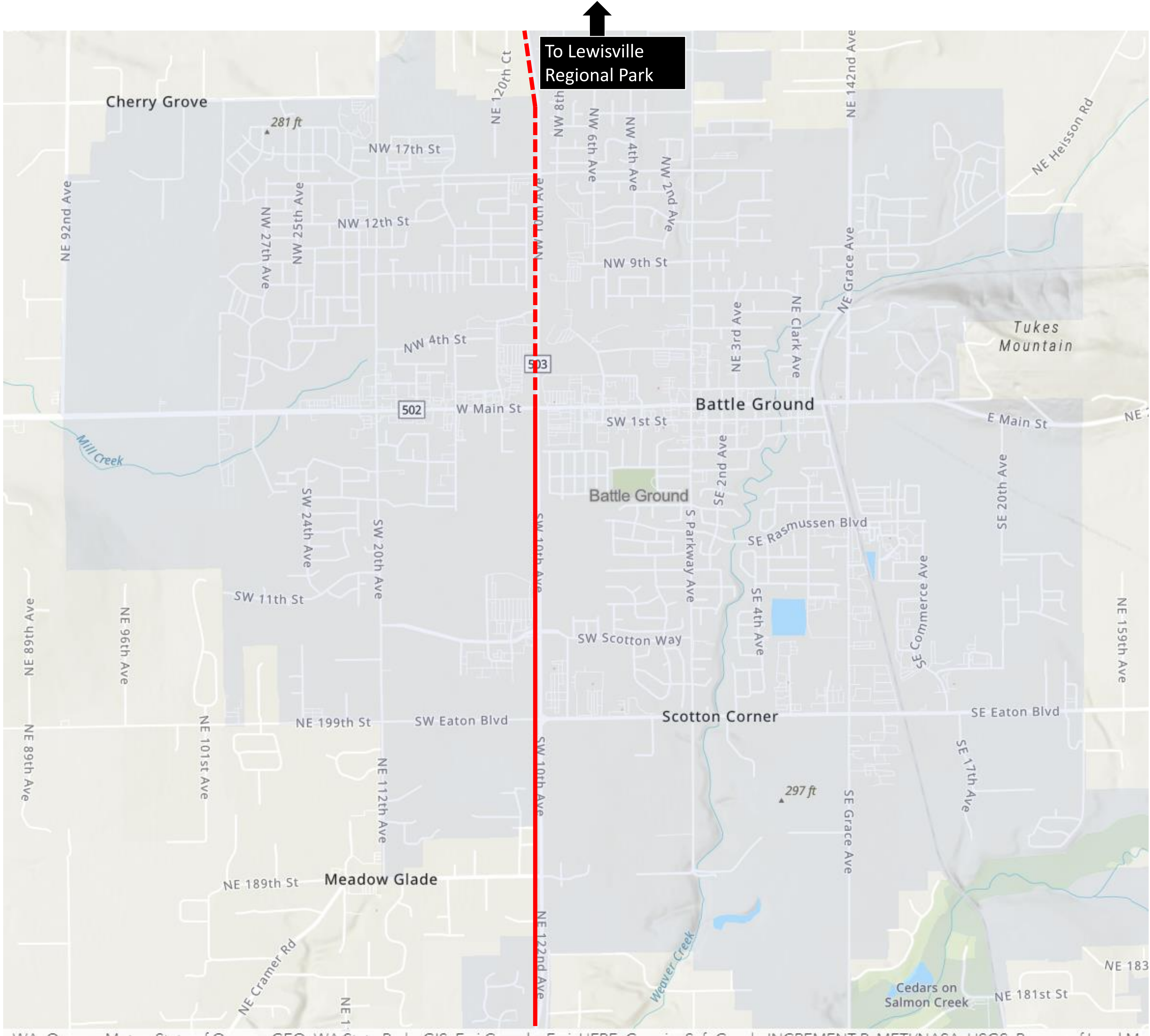








SR 503  
Corridor  
(City, County,  
WSDOT  
Coordination  
Needed)





# Thank you!

[Chuck.Green@otak.com](mailto:Chuck.Green@otak.com)

360-906-6795