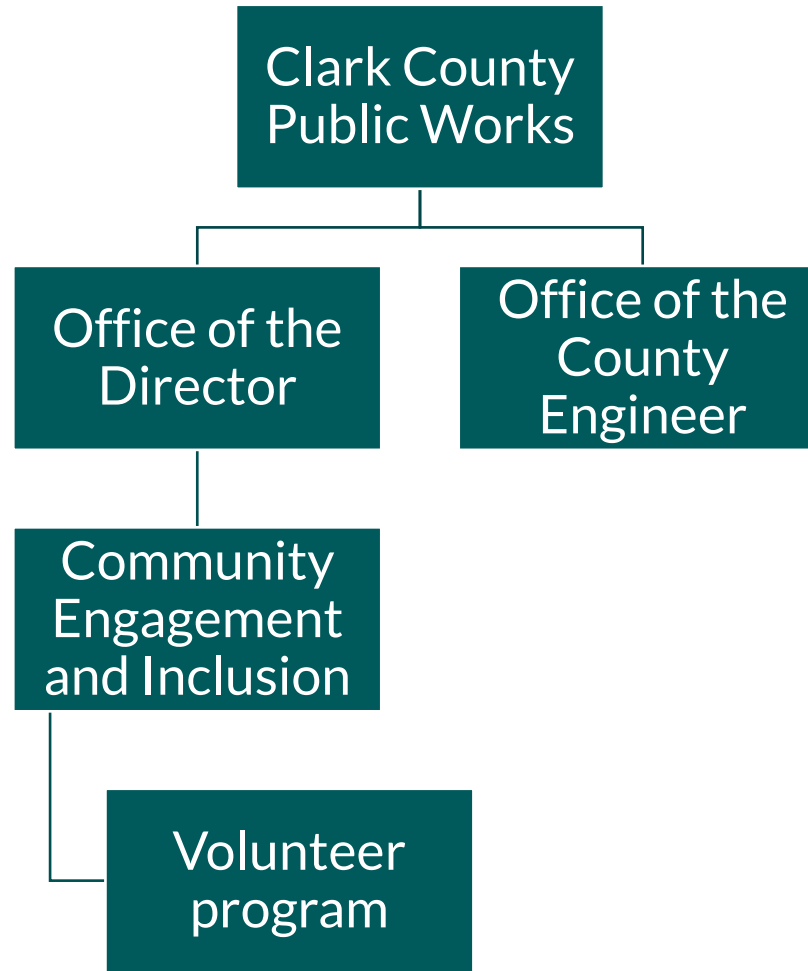


# Public Works Community Engagement, Inclusion and Volunteering

---





# Community Engagement and Inclusion (Outreach)

---

- Communications specialist/  
“Public Information Officer”
- Support staff
- Volunteer program  
coordinator
- Parks community  
engagement staff
- Clean Water education staff



# Community Engagement and Inclusion (Outreach)

---

- Open houses
- Mailings
- “Door Hangers”
- Social media
- Media relations
- Translation and interpretation resources
- Community meetings
- Emergency response







## Stay Updated

- Road closures
- Construction
- Invasive/toxic plants, algae blooms
- Parks information, highlights
- Lifeguards, splash pad
- Volunteer opportunities
- Public projects, community input



# Why volunteers?

- Community growth = increased need
- Valuable outreach and relationship-building tool; great way to hear from residents what they would like to see
- Over 11,500 hours of service in 2021 (atypical year)
- Increases safety of public facilities
- Instills sense of pride, ownership, belonging

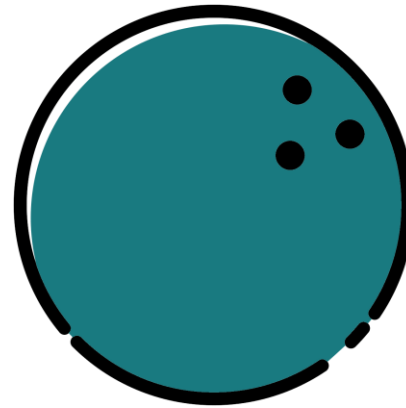


In 2021, volunteers picked up...

---

Over 12,440  
pounds of litter

=



x 850

Over 9,196  
gallons of litter

=



x 60,000

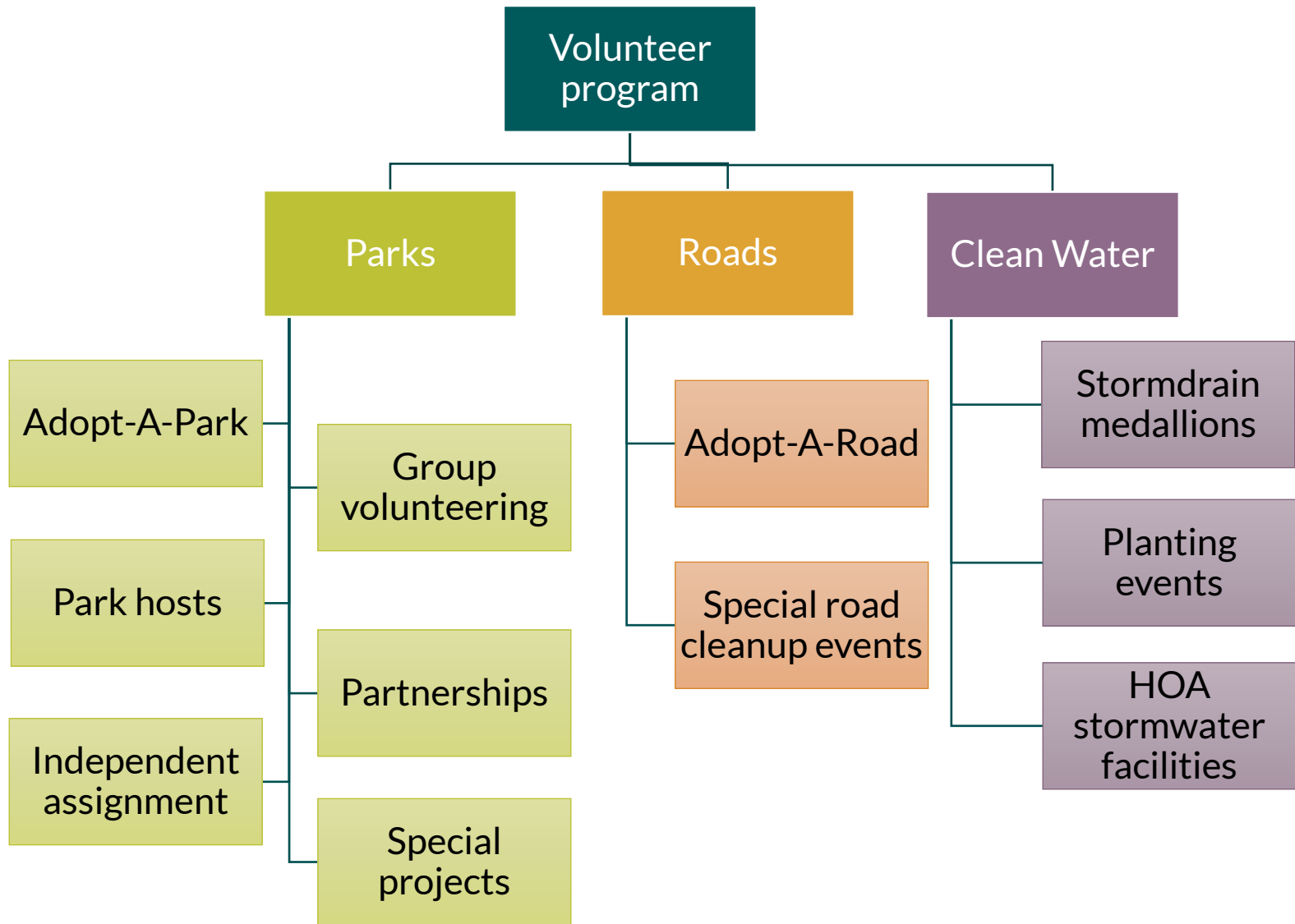


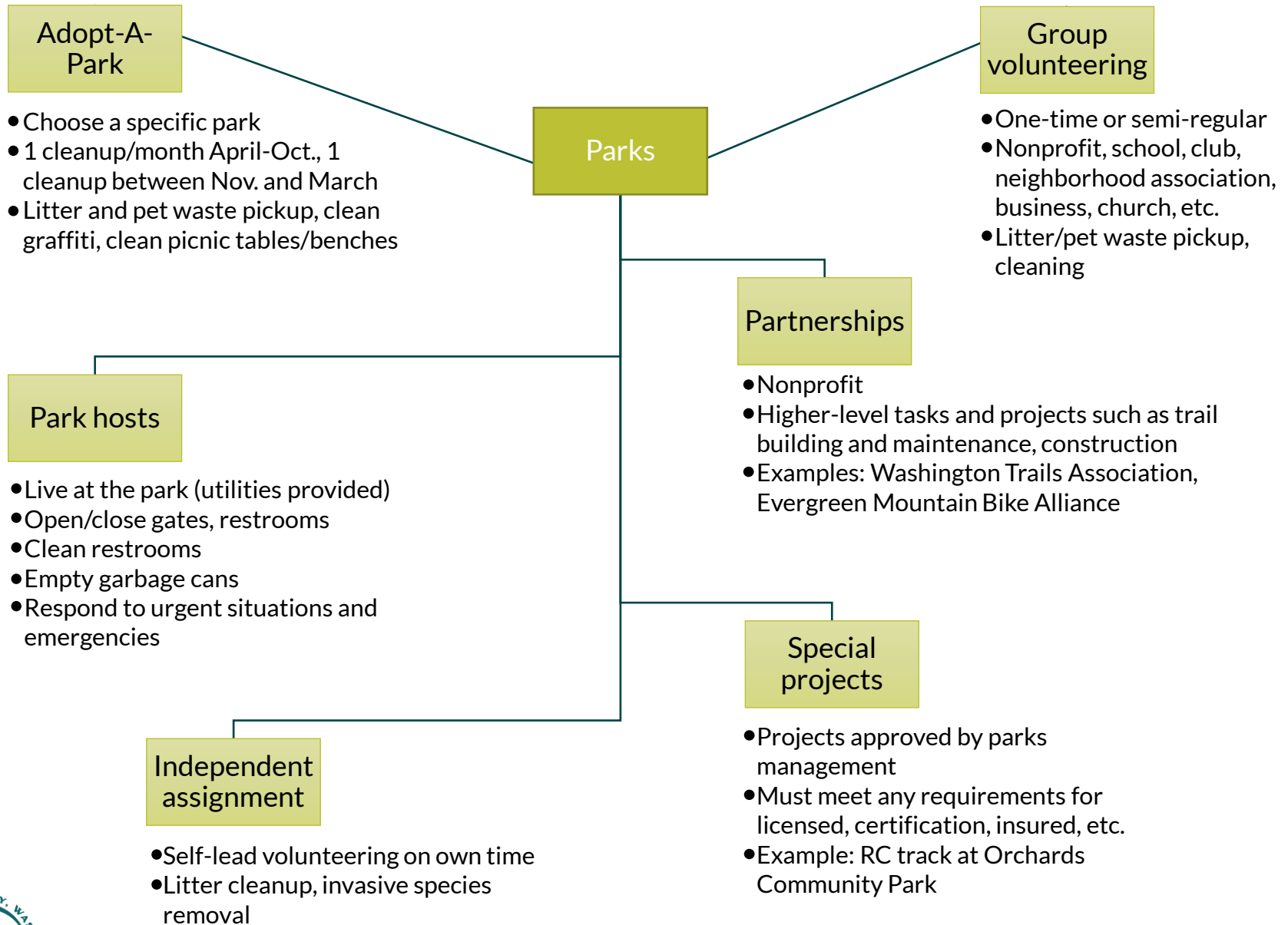
# Why volunteer with us?

- Safety
- Legality
- What we provide (support, supplies, PPE, waste disposal, etc.)
- Collaboration on outreach efforts
- Get to know staff, who to call









## Adopt-A-Park

- Choose a specific park
- 1 cleanup/month April-Oct., 1 cleanup between Nov. and March
- Litter and pet waste pickup, clean graffiti, clean picnic tables/benches



Group

projects

- Projects approved by parks management
- Must meet any requirements for licensed, certification, insured, etc.
- Example: RC track at Orchards Community Park





## Group volunteering

- One-time or semi-regular
- Nonprofit, school, club, neighborhood association, business, church, etc.
- Litter/pet waste pickup, cleaning

Partnerships

Nonprofit

- Respond to urgent situations and emergencies

## Independent assignment

- Self-lead volunteering on own time
- Litter cleanup, invasive species removal





Adopt-A-



## Group volunteering

- One-time or semi-regular
- Nonprofit, school, club, neighborhood association, business, church, etc.
- Litter/pet waste pickup, cleaning

## Partnerships

- Nonprofit
- Higher-level tasks and projects such as trail building and maintenance, construction
- Examples: Washington Trails Association, Evergreen Mountain Bike Alliance

## Special projects

- Projects approved by parks management
- Must meet any requirements for licensed, certification, insured, etc.
- Example: RC track at Orchards Community Park



## Adopt-A-Park

- Choose a specific park
- 1 cleanup/month April-Oct., 1 cleanup between Nov. and March
- Litter and pet waste pickup, clean graffiti, clean picnic tables/benches

## Park hosts

- Live at the park (utilities provided)
- Open/close gates, restrooms
- Clean restrooms
- Empty garbage cans
- Respond to urgent situations and emergencies

## Independent assignment

- Self-lead volunteering on
- Litter cleanup, invasive species removal

## Group volunteering







### Group volunteering

- One-time or semi-regular
- Nonprofit, school, club, neighborhood association, business, church, etc.
- Litter/pet waste pickup, cleaning

### Partnerships

- Nonprofit
- Higher-level tasks and projects such as trail building and maintenance, construction
- Examples: Washington Trails Association, Evergreen Mountain Bike Alliance

### Special projects

- Projects approved by parks management
- Must meet any requirements for licensed, certification, insured, etc.
- Example: RC track at Orchards Community Park

## Adopt-A-Park

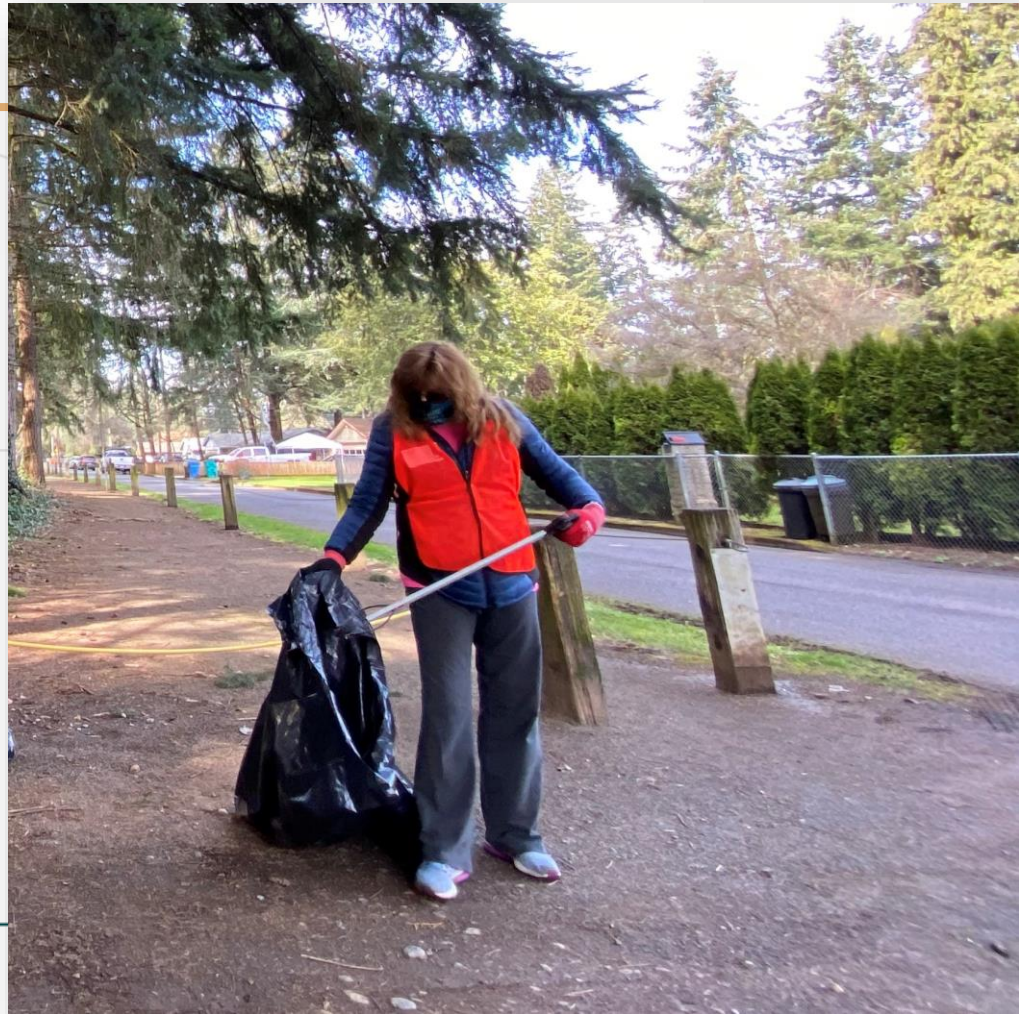
- Choose a specific park
- 1 cleanup/month April-Oct., 1 cleanup between Nov. and March
- Litter and pet waste pickup, clean graffiti, clean picnic tables/benches

## Park hosts

- Live at the park (utilities provided)
- Open/close gates, restrooms
- Clean restrooms
- Empty garbage cans
- Respond to urgent situations and emergencies

## Independent assignment

- Self-lead volunteering on own time
- Litter cleanup, invasive species removal



- Must meet any requirements for licensed, certification, insured, etc.
- Example: RC track at Orchards Community Park





# Roads

```
graph TD; Roads[Roads] --> AdoptA[Roads]; Roads --> Special[Special road cleanups];
```

## Adopt-A-Road

- Work with Public Works to identify road segment of interest that also meets safety requirements
- Commit to 3 cleanups/year for min. 2 years
- 25 participant max.; additional rules

## Special road cleanups

- May be an option for ineligible roads
- May be an option for groups that want to do a one-time cleanup
- Currently limited to school districts, other legally-recognized entities with high levels of insurance coverage



Road

## Adopt-A-Road

- Work with Public Works to identify road segment of interest that also meets safety requirements
- Commit to 3 cleanups/year for min. 2 years
- 25 participant max.; additional rules





## Special road cleanups

- May be an option for ineligible roads
- May be an option for groups that want to do a one-time cleanup
- Currently limited to school districts, other legally-recognized entities with high levels of insurance coverage

# Clean Water

## Stormdrain medallions

- Borrow kit to install stormwater drain medallions

## HOA stormwater facility maintenance

- Some facilities have trails, passive recreation amenities

## Planting events

- Part of restoration project, generally
- Planting events may also be lead by Parks/vegetation management





## Stormdrain medallions

- Borrow kit to install stormwater drain medallions



HOA stormwater

Planting events

- Part of restoration project generally
- Planting events may also be lead by Parks/vegetation management





Water

## HOA stormwater facility maintenance

- Some facilities have trails, passive recreation amenities

vents

on project,

may also be  
vegetation





Stormdrain  
medallion

- Borrow kit to install stormwater drain medallions

A stormwater  
facility maintenance

Some facilities have trails,  
passive recreation amenities

## Planting events

- Part of restoration project, generally
- Planting events may also be lead by Parks/vegetation management




# Where to go for more information

volunteer | Clark County

clark.wa.gov/public-works/volunteer

Apps Workday Volunteer Page DocuSign Login Login Verification |... Public Works | Clark... Portland, OR NWS Weather & Ha... Clarknet COV ArcGIS Portal PW - Office of Cou... Hiring Process Trac...

Stop the spread. Get your COVID-19 vaccine. LEARN MORE >

 PUBLIC WORKS

Change language

Search

How do I... Services Departments Elected Officials Maps & Records

Public Works

About Public Works +

Contractors and consultants +

Equal opportunity - Title VI

Chelatchie Prairie Railroad +

Flooding +

Legacy lands and natural +

es +

nd trails +

ty and survey +

and bridges +

water +


Traffic +

Transportation +

Vegetation and weed +

management

## Volunteer



The Clark County Public Works volunteer program engages the community in meaningful volunteer experiences that enhance community assets like parks and roadways. These activities also support the mission of Public Works to...





## On this page

Click on a button below to jump to a specific section of this page

[Volunteer Activities](#)[Contact](#)[Newsletter](#)[Volunteer Frequently Asked Questions](#)[Volunteer Forms](#)[COVID Guidelines](#)[Events Calendar](#)

CLARK COUNTY WASHINGTON  
PUBLIC WORKS

### Volunteer Events

Use the blue arrows at the top left of the calendar to scroll to the next month.

#### Clark County Public Works Volunteer Program

Today) ◀ ▶ March 2022 ▾ Print Week Month Agenda

Sun	Mon	Tue	Wed	Thu	Fri	Sat
27	28	Mar 1	2	3	4	5
6	7	8	9	10	11	12
13	14	15	16	17	18	19
20	21	22	23	24	25	26 8:30am Trail work w
27	28	29	30	31	Apr 1	2 8:30am Trail work w

Events shown in time zone: Pacific Time - Los Angeles

+ Google Calendar

### Volunteer Program News and Events



February 25, 2022

There's a lot to talk about this month! The Public Works volunteer program is busy scheduling volunteer activities for the coming spring and summer, training new Adopt-A-Park and Adopt-A-Road volunteers and recruiting for a new volunteer park host at Lewisville Regional Park.

COVID guidelines have also been updated. There is no longer a limit to the number of participants for a volunteer activity. Read on to learn more.



#### Activity Spotlight Volunteer Park Host

Volunteer park hosts live at select park sites to help ensure that, despite the geographic spread, our parks are always clean, safe and well-cared for. We are currently accepting applications for a park host for



# Thank you!

[pwvolunteering@clark.wa.gov](mailto:pwvolunteering@clark.wa.gov)

564.397.1679

