

# Clean Water Monitoring

---

## Clark County Clean Water

Jeff Schnabel

March 9, 2022



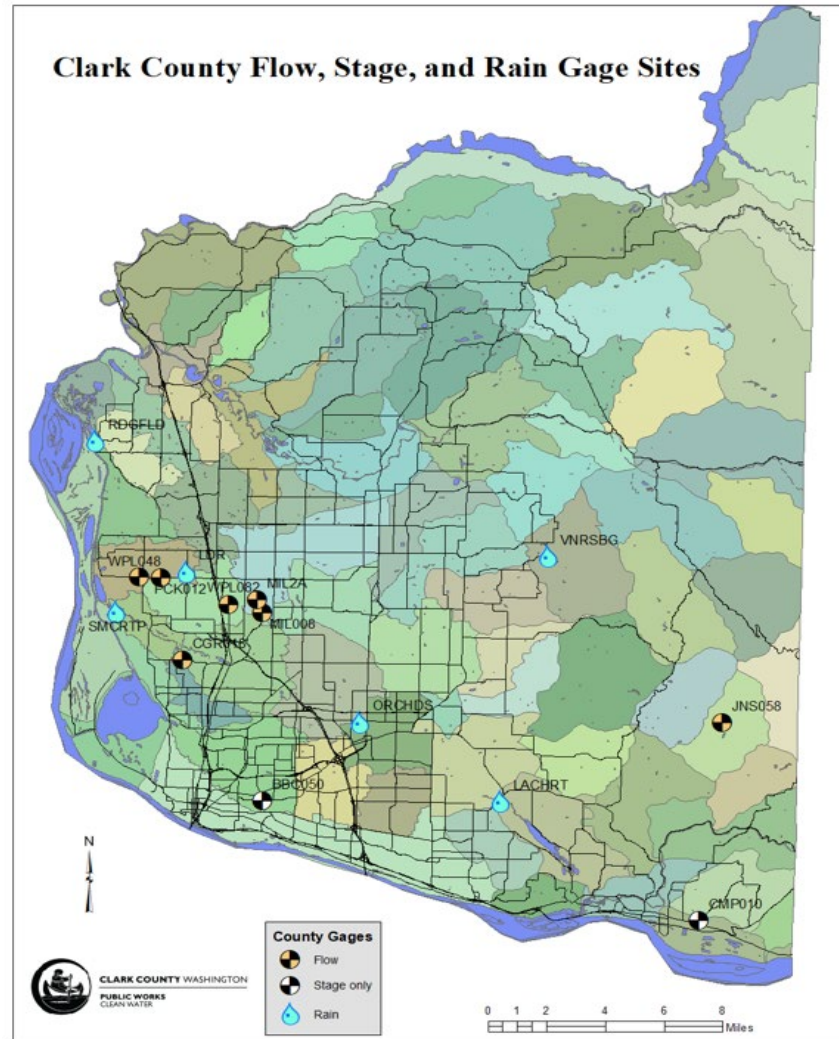
# Projects and Programs

---

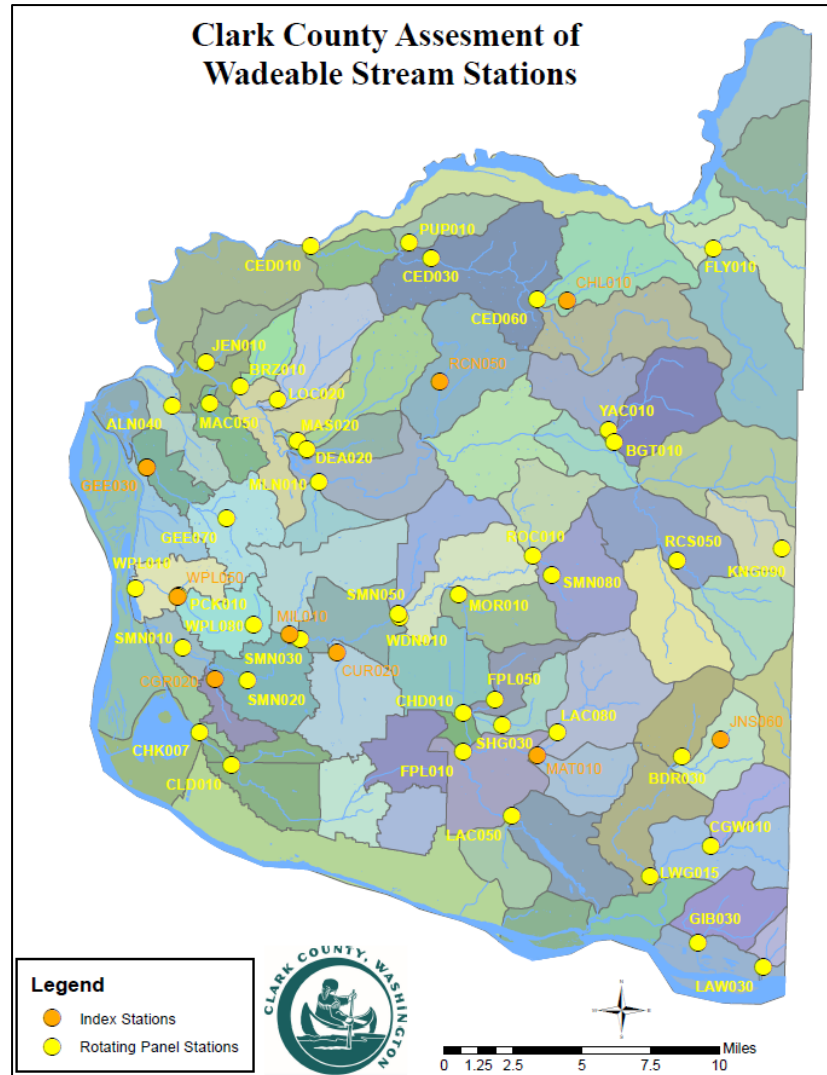
- **Lower Columbia Urban Streams (LCUS)**
  - Regional monitoring-- permit requirement
    - Pay into fund to meet requirement
    - Ecology contracts with Clean Water to deliver the project for permittees
    - Habitat, invertebrates, stage, conductivity, sediment
- **Wadeable Streams**
  - Nine index stations; 42 rotating stations (5 year)
    - Water quality, temperature, invertebrates
- **Hydrology**
  - Nine stream flow gages; Six rain gages
- **Microbial Source Tracking**
  - Bacterial DNA
- **Illicit Discharge Detection and Elimination**
  - Permit requirement - screen an average of 12% of the storm system annually



# Hydrology stations



# Wadeable Streams Assessment



# Data Uses

---

- Permit reports – LCUS and IDDE
- Stream Health Report
- State TMDL/Water Cleanup Plan support
- Basin and Capital planning
- Education/Outreach
- HSPF models: input, calibration, and verification of hydrologic and hydraulic models
- Long term trends in flow related to stormwater inputs, habitat, BIBI
- Public records, data requests. Data are used by agencies, consultants, partner groups (CCD, etc)

