

# 2022 New Commissioner Training

What is Clean Water?  
NPDES Phase 1 Permit  
Organization Chart

---

Clark County Clean Water Commission

Justin Maynard

March 9, 2022



# NPDES Phase 1 Municipal Stormwater Permit

---

## State and Federal law

- Federal Clean Water Act - EPA
- EPA delegates authority to Ecology
  - ▶ National Pollutant Discharge Elimination System (NPDES) Municipal Stormwater Permit
  - ▶ Regulates discharges to waters of the state
  - ▶ Updated every 5 years – current permit August 2019 – July 2024

## Permit Compliance

- Led by Clean Water Division
- Supported by multiple divisions and depts
- Numerous requirements and criteria

## Compliance is important!

- Public health, water body health, and quality of life
- Fines and third-party lawsuits

## Program Components/Requirements

- Storm sewer inventory (S5.C.2)
- Coordination with other jurisdictions (S5.C.3)
- Public Involvement (S5.C.4)
- Code and manual updates (S5.C.5)
- Stormwater Planning (S5.C.6)
- Stormwater capital projects (S5.C.7)
- Source control and illicit connections (S5.C.8-9)
- Stormwater facility maintenance (S5.C.10)
- Education and outreach (S5.C.11)
- Surface water and stormwater monitoring (S8)
- Watershed planning (S8)

## Other Local Permittees

- City of Vancouver (Phase II)
- City of Camas (Phase II)
- Various “Secondary Permittees”  
(e.g. WSU Vancouver)



# NPDES Summary

---

## **S1 – Permit Coverage/Permittees**

## **S2 – Authorized Discharges**

- ▶ Underground Injection Control
- ▶ Federal Clean Water Act

## **S3 – Responsibilities of Permittees**

- ▶ Thou shalt comply with this permit

## **S4 – Compliance with Standards**

- ▶ Reduce pollution
- ▶ Report violations

## **S5 – Stormwater Management Program**

- ▶ Legal Authority (Code)
- ▶ MS4 Mapping & Documentation
- ▶ Public Involvement & Participation
- ▶ Development Regulation
- ▶ Planning
- ▶ Structural Stormwater Controls

- ▶ Source Control, IDDE
- ▶ Operations & Maintenance
- ▶ Education & Outreach

## **S6 – Not Relevant (Secondary Permittees)**

## **S7 – Compliance with TMDLs**

## **S8 – Monitoring & Assessment**

- ▶ Regional Status & Trends
- ▶ Program Effectiveness & Source Identification
- ▶ Stormwater Discharge Monitoring
- ▶ Payments into Collective Funds

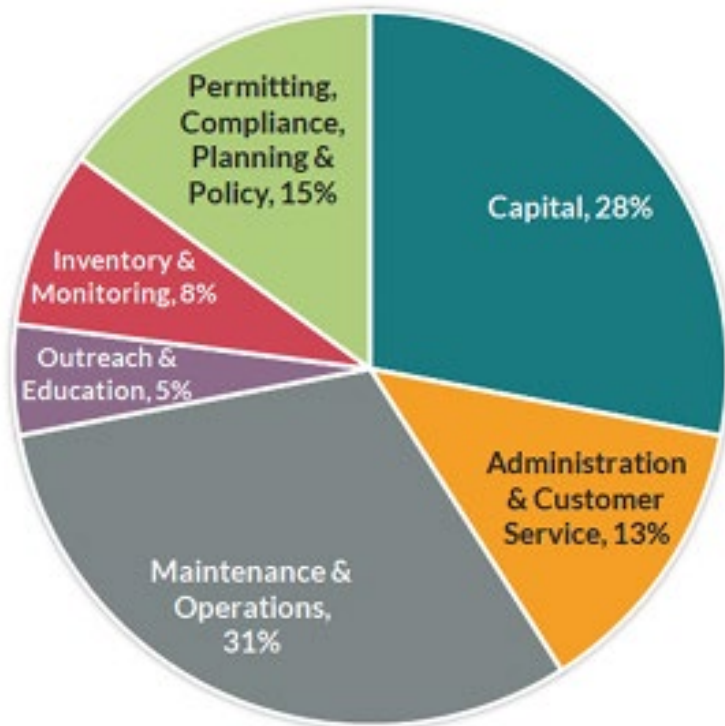
## **S9 – Reporting Requirements**

- ▶ Annual Report



# Funding

---



2022 Clean Water Adopted Budget

## 2021 Clean Water Adopted Budget

Total budget: \$8 million

## 2022 Clean Water Adopted Budget

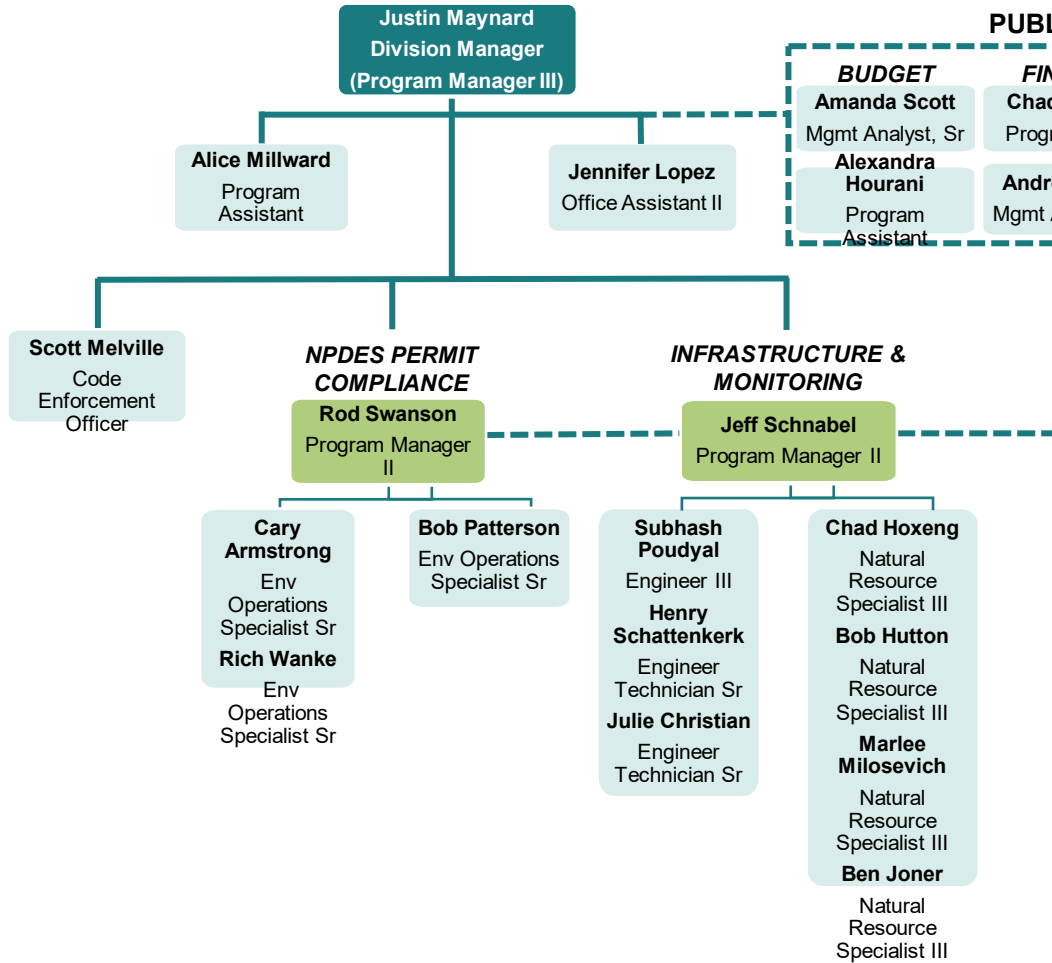
Total budget: \$10 million

Annual capital spending varies significantly based on project construction timelines

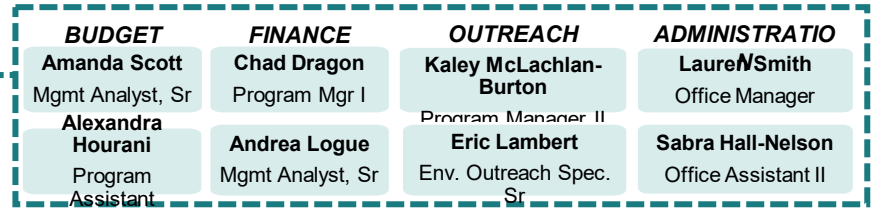


# CLARK COUNTY MUNICIPAL STORMWATER PERMIT COMPLIANCE

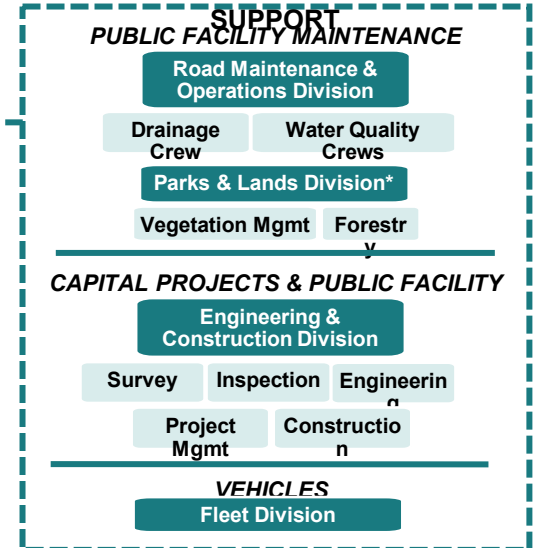
## PUBLIC WORKS CLEAN WATER DIVISION



## PUBLIC WORKS DEPARTMENT SUPPORT



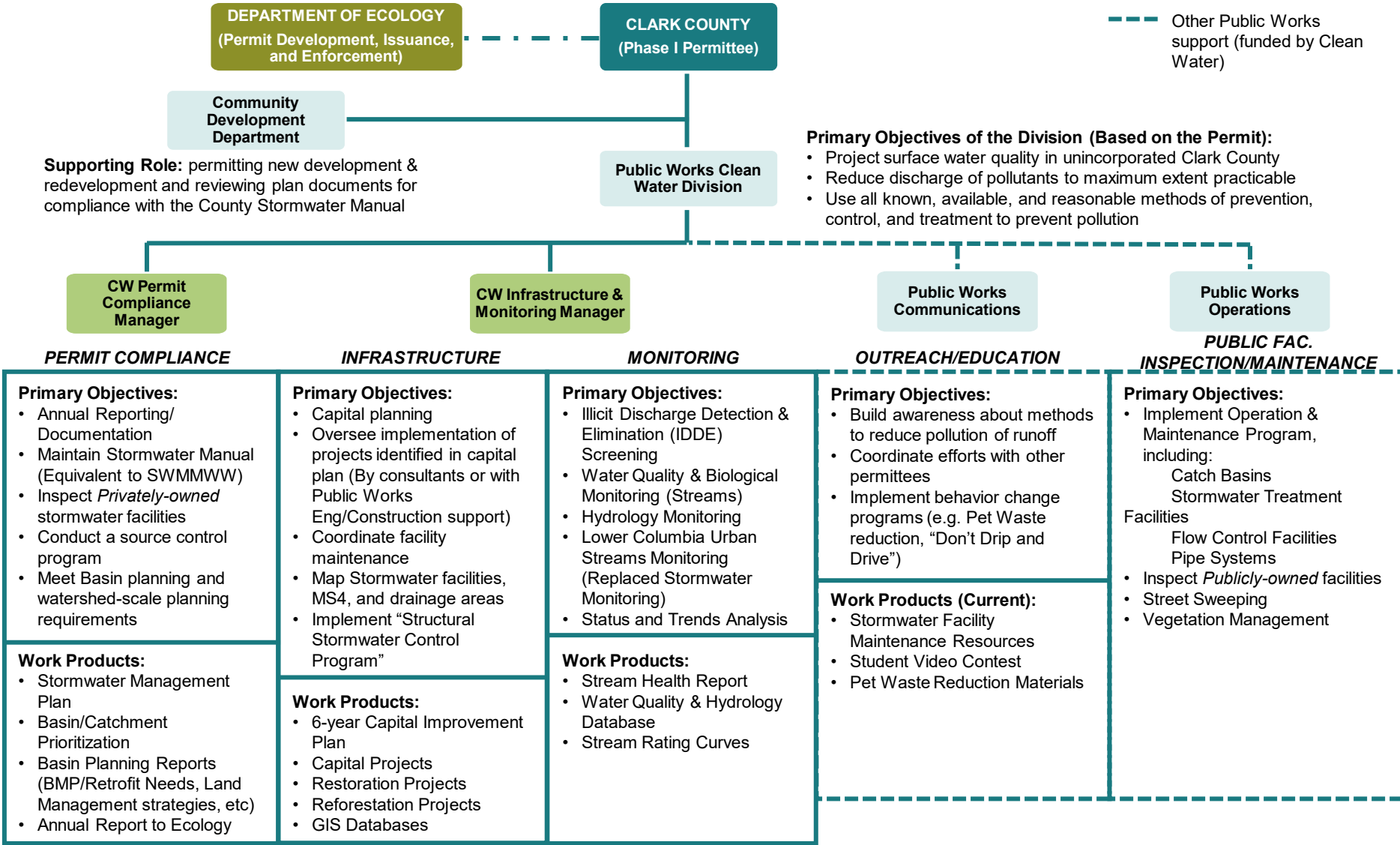
## PUBLIC WORKS OPERATIONS SUPPORT



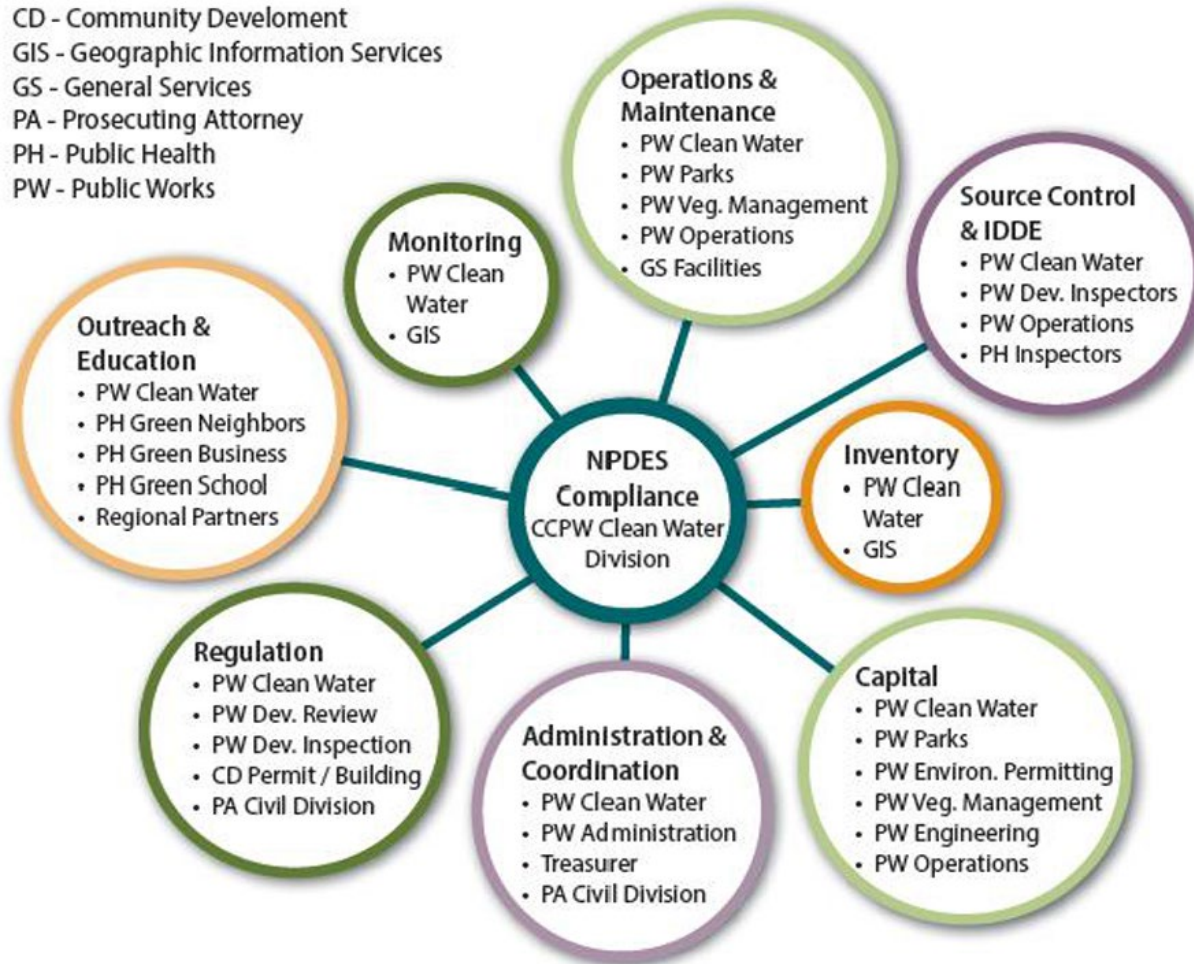
\*Also supports CW Reforestation Projects



# CLARK COUNTY MUNICIPAL STORMWATER PERMIT COMPLIANCE



# Clark County Clean Water Division NPDES Compliance



# Additional Resources

---

- **Stormwater Code Manual** [2021 Stormwater Manual Update](#)
  - Effect on July 1, 2021
- **2019 NPDES Phase 1 Permit issued by the** [Washington State Department of Ecology](#)
  - Effective August 1, 2019, through July 31, 2024
- **Stormwater Partners of SW Washington** [www.stormwaterpartners.com](http://www.stormwaterpartners.com)
- **Explore Your Watershed** [www.stormwaterpartners.com/clark-watersheds](http://www.stormwaterpartners.com/clark-watersheds)
- **Clark County Clean Water / Stormwater Website**  
[www.clark.wa.gov/public-works/stormwater](http://www.clark.wa.gov/public-works/stormwater)





# Thank You!

---

## Comments and Questions

Clark County Public Works  
Clean Water Division  
1300 Franklin Street  
Vancouver, WA 98666  
[cleanwater@clark.wa.gov](mailto:cleanwater@clark.wa.gov)

