

# Clark County Public Health STI HIV Prevention Program

---

Rachel Vinson, BSN, RN  
Program Manager II  
STI HIV Prevention Program  
Clark County Public Health

April 23, 2024



# Presentation objectives

---

- Discuss purpose and importance of STI and HIV surveillance activities
- Review surveillance data and trends
- Shared understanding of the comprehensive STI and HIV prevention services provided by Clark County Public Health
- Highlight community partnerships



# STI and HIV surveillance

---

- Public health surveillance includes reporting, investigation, collection, and distribution of data about illness and death.
- STI and HIV surveillance data directs the implementation of programmatic activities to help control and prevent the spread of infection or virus.



# Reporting notifiable conditions

- Health care providers, facilities, laboratories, food service establishments, child care facilities, and schools are **legally required** to notify CCPH of suspected or confirmed cases of selected diseases or conditions.
- Resources for providers** are available on the CCPH website.

**Washington State Department of HEALTH**

**Notifiable Conditions**  
**HEALTH CARE PROVIDERS/FACILITIES**

Notifiable to the local health jurisdiction (LHJ) of the patient's residence unless otherwise designated  
 (If unable to reach the LHJ of the patient's residence, please call: 1-877-539-4344  
 (If patient residence is unknown, notify the LHJ of the health care provider that ordered the diagnostic test))

**IMMEDIATELY NOTIFIABLE**  
Requires a phone call to reach a fax person at the local health jurisdiction, 24/7. **Must be reported as soon as clinically suspected.**

<ul style="list-style-type: none"> <li>1 Anisik meningitis</li> <li>2 Anthrax (Bacillus anthracis and confirmed Bacillus cereus biovar anthracis only - Do not report all Bacillus cereus)</li> <li>Botulism, foodborne, infant, and wound</li> <li>3 Cholera (Vibrio cholerae O1 or O139)</li> <li>4 Coronavirus infection (severe communicable)</li> <li>5 DAIQ-associated coronavirus</li> <li>6 Dengue</li> <li>7 Diphtheria</li> <li>8 Domestic acid poisoning</li> <li>9 E. coli (See "Shiga toxin-producing E. coli")</li> <li>10 Giardiasis (Giardia lamblia)</li> <li>11 Hemophilus influenzae (meningitis, children under 5 years of age)</li> <li>12 Influenza, novel or unidentifiable strain</li> <li>13 Measles (varicella) - Acute disease only</li> <li>14 Meningococcal disease, invasive</li> <li>15 Monkeypox (Mpox)</li> </ul>	<ul style="list-style-type: none"> <li>16 Outbreaks and suspected outbreaks</li> <li>17 Paralytic shellfish poisoning</li> <li>18 Pertussis (whooping cough, fever, or cluster)</li> <li>19 Plague</li> <li>20 Polio</li> <li>21 Rabies (suspect or laboratory confirmed human cases and laboratory confirmed animal cases)</li> <li>22 Rubella (suspect or laboratory confirmed human cases and laboratory confirmed animal cases)</li> <li>23 Rubella, acute disease only (including congenital rubella syndrome)</li> <li>24 Shiga toxin-producing E. coli (STEC) infections</li> <li>25 Streptococcus pneumoniae (invasive)</li> <li>26 Tetanus</li> <li>27 Tularemia</li> <li>28 Vaccinia transmission</li> <li>29 Viral hemorrhagic fever</li> <li>30 Yellow fever</li> </ul>
--	---

**NOTIFIABLE WITHIN 24 HOURS**  
Requires a phone call reporting after normal public health business hours.

<ul style="list-style-type: none"> <li>31 Biphthorosis</li> <li>32 Brucellosis</li> <li>33 Candida auris infection or colonization</li> <li>34 Hantavirus infection</li> <li>35 Hepatitis A (acute infection)</li> <li>36 Hepatitis B (acute infection)*</li> <li>37 Hepatitis C (acute infection)</li> <li>38 Hepatitis C (prevalent) - Initial diagnosis, and previously unreported cases</li> <li>39 Hepatitis D (acute and chronic infection)</li> <li>40 Hepatitis E (acute infection)</li> <li>41 Legionellosis</li> <li>42 Leptospirosis</li> <li>43 Listeriosis</li> <li>44 Mumps, acute disease only</li> <li>45 Pertussis</li> </ul>	<ul style="list-style-type: none"> <li>46 Tuberculosis</li> <li>47 Q fever</li> <li>48 Salmonellosis</li> <li>49 Shigellosis</li> <li>50 Tuberculosis (disease) confirmed or highly suspicious, i.e., initiator of empiric treatment</li> <li>51 Varicella-zoster virus (VZV) infection (not to include varicella-zoster disease)</li> <li>52 Vibrios (Vibrio species not including Vibrio cholerae O1 or O139)</li> <li>53 Yersinia</li> <li>54 Unexplained critical illness or death</li> </ul>
--	---

**LEGEND**

- 1-5: Immediate notification required
- 6-15: 24-hour notification required
- 16-54: Routine notification required

**HEALTH CARE PROVIDERS/FACILITIES**

Notifiable to the local health jurisdiction (LHJ) of the patient's residence unless otherwise designated  
 (If unable to reach the LHJ of the patient's residence, please call: 1-877-539-4344  
 (If patient residence is unknown, notify the LHJ of the health care provider that ordered the diagnostic test))

**NOTIFIABLE WITHIN 30 DAYS**  
Requires a phone call reporting after normal public health business hours.

<ul style="list-style-type: none"> <li>55 Birth defects (fetal alcohol syndrome, Down syndrome, and Central pontine myelinolysis)</li> <li>56 Cancer (See "Cancer Reporting" on the CCPH website)</li> </ul>	<ul style="list-style-type: none"> <li>57 Facility only</li> <li>58 Birth defects - Abdominal wall defects (inclusive of gastroschisis and omphalocele)</li> <li>59 Birth defects - Down syndrome, Hypospadias and Limb reductions</li> <li>60 Birth defects - Neural tube defects (inclusive of anencephaly and spina bifida)</li> <li>61 Birth defects - Oral clefts (inclusive of cleft lip with/without cleft palate)</li> <li>62 Gonorrhea (gonorrhea)</li> </ul>
--	--

**For birth defects listed above, call 360-236-3533**

**Notifiable to L&I - 360-902-5669**

- 63 Adhena, occupational
- 64 Hypermotility/pneumonia, occupational
- 65 Silicosis

**L&I, Washington State Department of Labor and Industries**

**RAPID SCREENING TESTS**  
 Providers and Facilities performing blood lead level (BLL) shall report to a laboratory and comply with the Reporting Requirements of WAC 246-110-201 (See WAC 246-110-201)

**Blood lead level\*\***

- 66 BLL results (See WAC 246-110-201)
- 67 Coronavirus infection (severe communicable)
- 68 Measles (varicella) (acute disease only)
- 69 Hepatitis C (acute infection)
- 70 Hepatitis C (chronic infection)
- 71 Human immunodeficiency virus (HIV) infection

**For birth defects listed above, call 360-236-3533**

**Washington State Department of HEALTH**  
 800-225-0001 (toll-free)  
 360-236-3533 (voice)  
 360-236-3534 (fax)  
 360-236-3535 (TDD)  
 360-236-3536 (relay)  
 360-236-3537 (voice)  
 360-236-3538 (fax)  
 360-236-3539 (TDD)  
 360-236-3540 (relay)

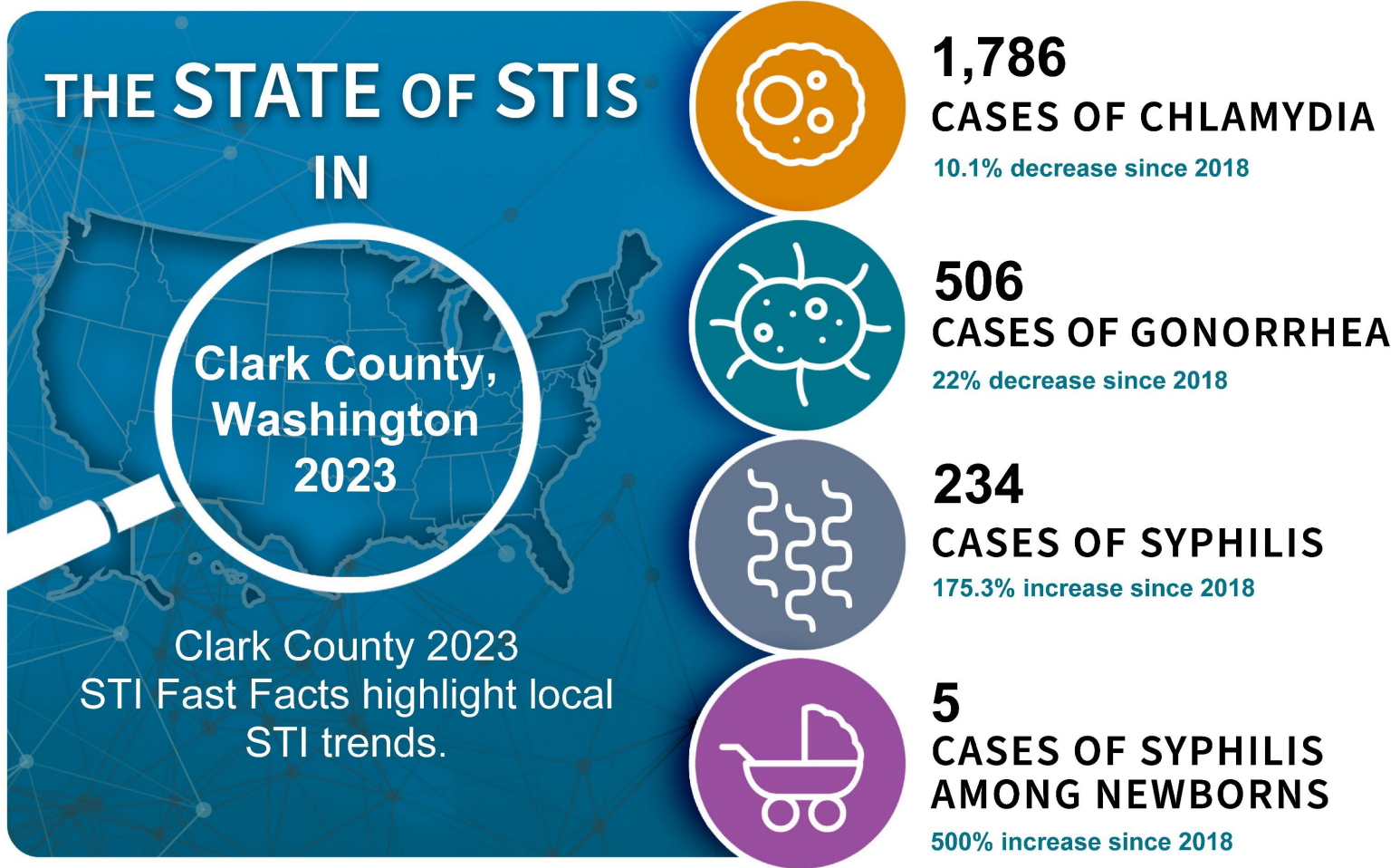


# STI HIV surveillance data

---

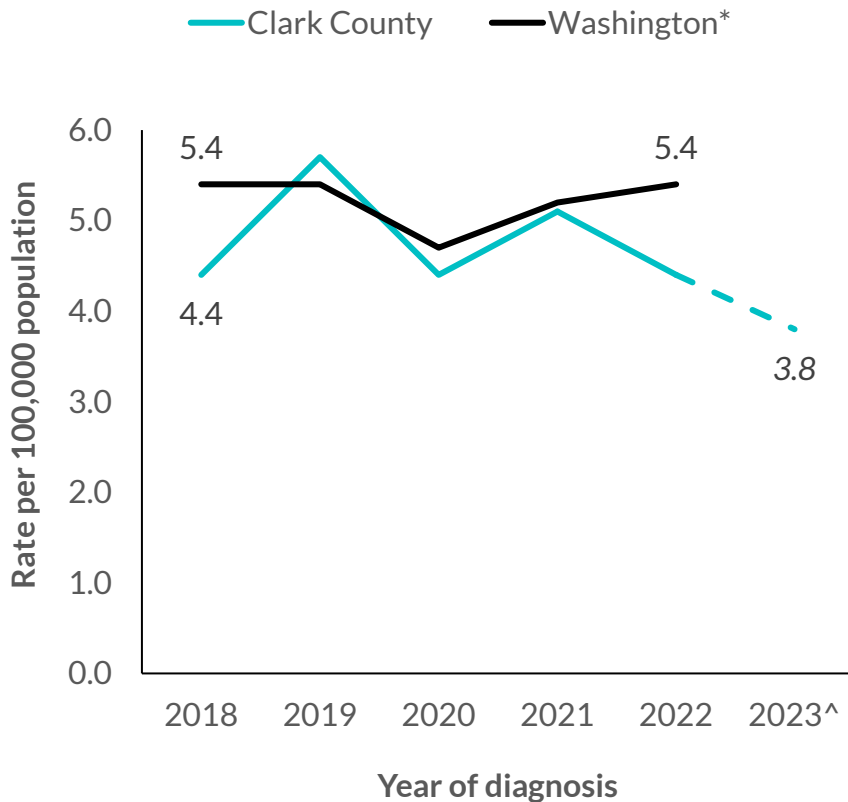


# Clark County trends, 2023



# Clark County HIV rates, 2018-2023<sup>^</sup>

## HIV rates in Clark County and Washington



## HIV trends in Clark County

Year of diagnosis	Cases	Rate	% diff from previous year	Trend
2018	21	4.4	-22.2%	↓
2019	28	5.7	+25.0%	↑
2020	22	4.4	-21.4%	↓
2021	26	5.1	+18.1%	↑
2022	26	5.0	0%	--
2023 <sup>^</sup>	20	3.8	-23.1%	↓

<sup>^</sup>HIV data for 2023 are preliminary and subject to change. These data are italicized and dashed to show that they are preliminary.  
 \*State data only available through 2022



# STI and HIV prevention services

---





# Preventing the spread

---



# Prevention activities

---

## Supporting our community providers:

- Supplying Bicillin to community providers
- Education on treatment and reporting guidelines
- Connecting patients to providers for care and treatment



## Additional prevention activities

---

The STI HIV Prevention Program also provides:

- Testing for gonorrhea, chlamydia, syphilis, HIV and hepatitis C
- Treatment for gonorrhea and chlamydia
- Linking to care for syphilis
- Telehealth and at-home test kits
- Health education



# Importance of community partnerships

---

Some of our community partnerships include:

- Oregon AIDS Education and Training Center
- The Free Clinic of Southwest Washington
- Sea Mar Community Health Centers
- Columbia River Mental Health Services



# Thank you!

For more information:

[www.clark.wa.gov/public-health/sexually-transmitted-diseases-std](http://www.clark.wa.gov/public-health/sexually-transmitted-diseases-std)

