



Clark County Parks Advisory Board Meeting Minutes



Tuesday, January 14, 2025 4:00 PM to 6:00 PM

Virtual Meeting via Microsoft Teams and In-Person at Luke Jensen Sports Complex
in the LJSP Bud Van Cleve Community Meeting Room

Board Members: Jim Kautz, Teresa Meyer, Donald Meeks, Janis VanWyhe

Clark County Staff: Amy Arnold, Ross Hoover, David Stipe, Jenny Coker, Michael Chau, Denielle Cowley, Erik Harrison

Ex-Officio Members:	School District Liaisons:	Cale Piland (Evergreen)*, AJ Panter (Vancouver)* Rachel Best (Camas)*
	Parks Foundation:	Tim Leavitt*

Guests and Others: Paulo Zandamela, Brandon Erickson, John Jay, 480-586-8129

4:02 PM Call to Order

Jim called the meeting to order and Advisory Board members introduced themselves.

4:03 PM Administrative Actions

Time	Action Item
4:03 PM	MOTION BY: Teresa Meyer SECOND BY: Janis VanWyhe
	MOTION: Motion to adopt Meeting Minutes for: December 10, 2024 Minutes
	DISCUSSION: The Minutes have been approved.
	IN FAVOR: Unanimous OPPOSED: None ABSTAINED: None

4:03 PM Public Comment

There is none.

4:03 PM Manager's Report

There is none.

4:04 PM New Business: Division Name – Ross Hoover

Ross discussed that the division is changing its name to Parks and Nature to better encapsulate what types of work they do. Janis and Don both liked this change.

4:07 PM New Business: Mission/Vision/Core Values – Ross Hoover

Ross discussed the feedback received from these exercises is to help the division decide what to focus on and what to communicate to the public. Jim thinks this is a good idea, and Ross, Brandon, and David discussed having an inventory list of deferred maintenance projects.



Clark County Parks Advisory Board Meeting Minutes



Tuesday, January 14, 2025 4:00 PM to 6:00 PM

Virtual Meeting via Microsoft Teams and In-Person at Luke Jensen Sports Complex
in the LJSP Bud Van Cleve Community Meeting Room

4:18 PM New Business: Parks-Present and Future – Ross Hoover

Ross discussed this presentation and the need for feedback regarding the goals of how to communicate what the future of parks looks like, how to create sustainable system, and how to meet the needs of the community members.

Advisory Board members and Ross discussed various topics such as where the data in this presentation came from, if the completed and cancelled tasks were operational ones, adding park use fees and admission fees as another funding option, the definition and an example of operationalizing an existing asset, and expanding the PIF (Park Impact Fee) boundaries and how those funds are spent. Brandon, Paulo, John, and Ross also discussed the funding options, coordinating with other cities for their feedback and what they have done, and getting youth involved for their feedback as well. Ross and Jenny discussed the next steps for this presentation and the timeline for presenting it to Council.

5:16 PM Unfinished Business: Bylaws Revision #3 – Ross Hoover

Time	Action Item
5:28 PM	MOTION BY: Donald Meeks SECOND BY: Teresa Meyer
	MOTION: Motion to suspend adopting the Bylaws Revision #3 to next month to further discuss when the meetings should occur.
	DISCUSSION: Advisory Board members discussed whether the meetings should be held on a quarterly or monthly basis and decided to table this topic until next month to discuss it further.
	IN FAVOR: Unanimous OPPOSED: None ABSTAINED: None

5:31 PM New Business: Officer Election – Advisory Board

Time	Action Item
5:31 PM	MOTION BY: Teresa Meyer SECOND BY: Janis VanWyhe
	MOTION: Motion to nominate Jim Kautz as Chair of the Advisory Board; Motion to nominate Janis VanWyhe as Vice Chair of the Advisory Board; and Motion to nominate Teresa Meyer as Secretary of the Advisory Board.
	DISCUSSION: Advisory Board members discussed the roles of each assignment.
	IN FAVOR: Unanimous OPPOSED: None ABSTAINED: None

5:33 PM Roundtable

Teresa discussed that she visited Hockinson Community Park and went to Moulton Falls to see the bridge restoration improvements. Teresa and David discussed improving the parking at Moulton Falls and what this project entails.



Clark County Parks Advisory Board Meeting Minutes



Tuesday, January 14, 2025 4:00 PM to 6:00 PM

Virtual Meeting via Microsoft Teams and In-Person at Luke Jensen Sports Complex
in the LJSP Bud Van Cleve Community Meeting Room

5:40 PM Adjourn

Respectfully submitted, Amy Arnold

DRAFT

MISSION | Parks and Nature | January 2025

Health and Wellness

Economic Vitality

Access to the outdoors

Providing spaces to gather-social connections

Facilities to exercise

Community health and wellness

Self-worth/satisfaction

Giving back/service

Social interaction

Sustainability/stewardship/resiliency

VISION | Parks and Nature | 2025

No deferred maintenance/management of our assets

Coordinated plan for growth

100% task completion

Robust/sustainable/scalable funding

Interconnected system of parks and nature

Intergovernmental coordination

Growth in services and programs

Adequately equipped

Fair and manageable partnerships

Value

Functional trails system

Clark County Parks and Nature as the standard

100% internally funded

Opening sites that are undeveloped

VALUES | Parks and Nature | 2025

Sustainability

Consistency

People Centric

Collaboration

Innovation

Transparency

Inclusion

Community and Team Wellness

An aerial photograph of a sports complex. The complex features two artificial green soccer fields with white markings and goals, positioned at the top. Below them are two baseball fields with green grass and brown dirt bases. In the center, there is a small, octagonal pavilion with a light blue roof. The entire sports area is surrounded by a paved parking lot with several cars and a road with a roundabout. The image is partially framed by a white curved shape on the left side.

Parks and Nature

Sustainable Future

Why Parks



Residents visit Parks and Nature sites frequently

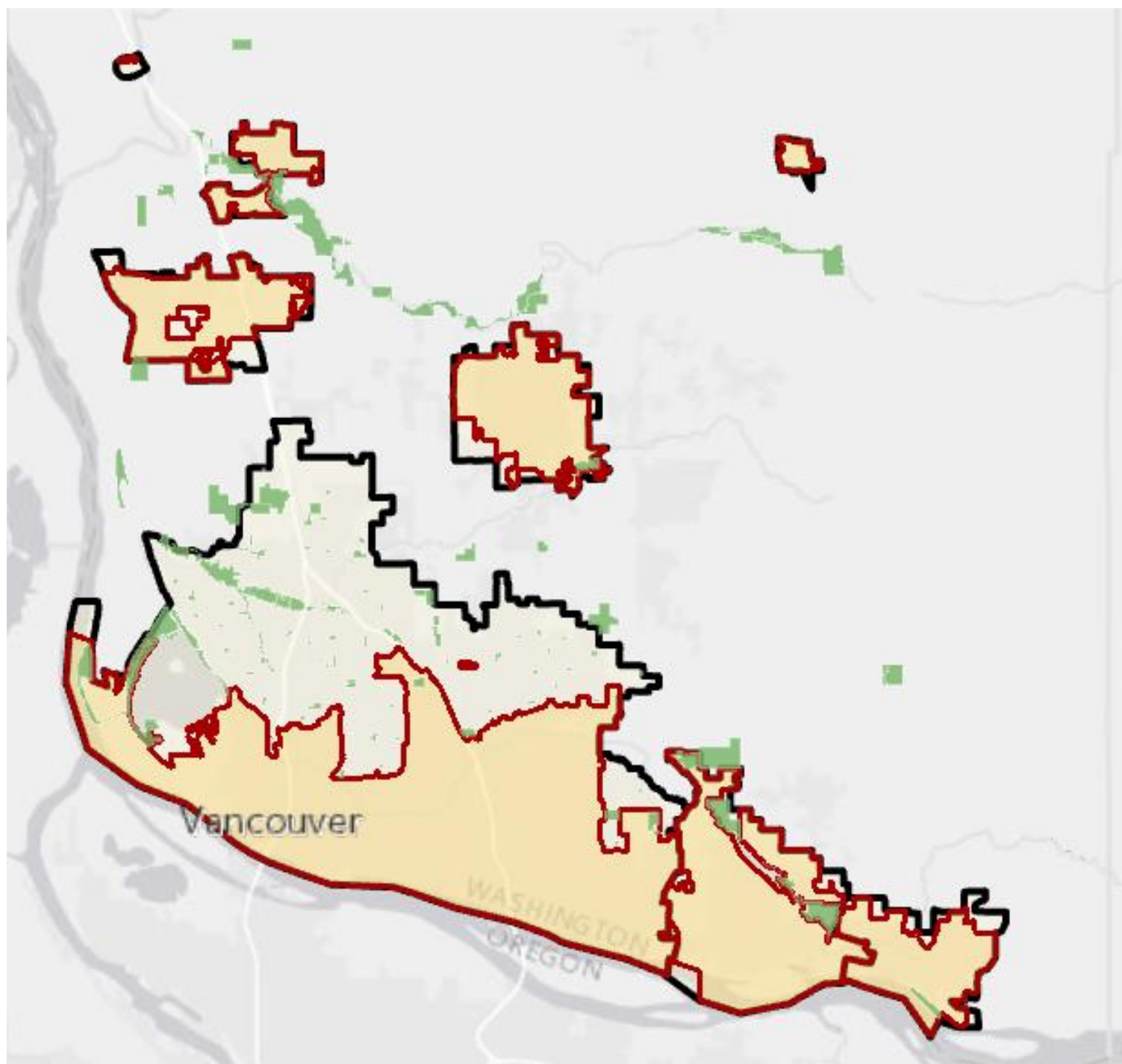
91% visit Clark County Parks and Nature at least 1x month

Fewer than 3% have not visited a park in the last year



Residents strongly value Clark County Parks and Nature

98% think Parks and Nature are important to quality of life in Clark County





Requirements

WAC 365-196-440

RCW 36.70A.020

Clark County Comprehensive Plan

Parks, Recreation, Open Space Plan



Why Parks

- Access
- Sustainable Stewardship
- Economic Vitality
- Health and Wellness



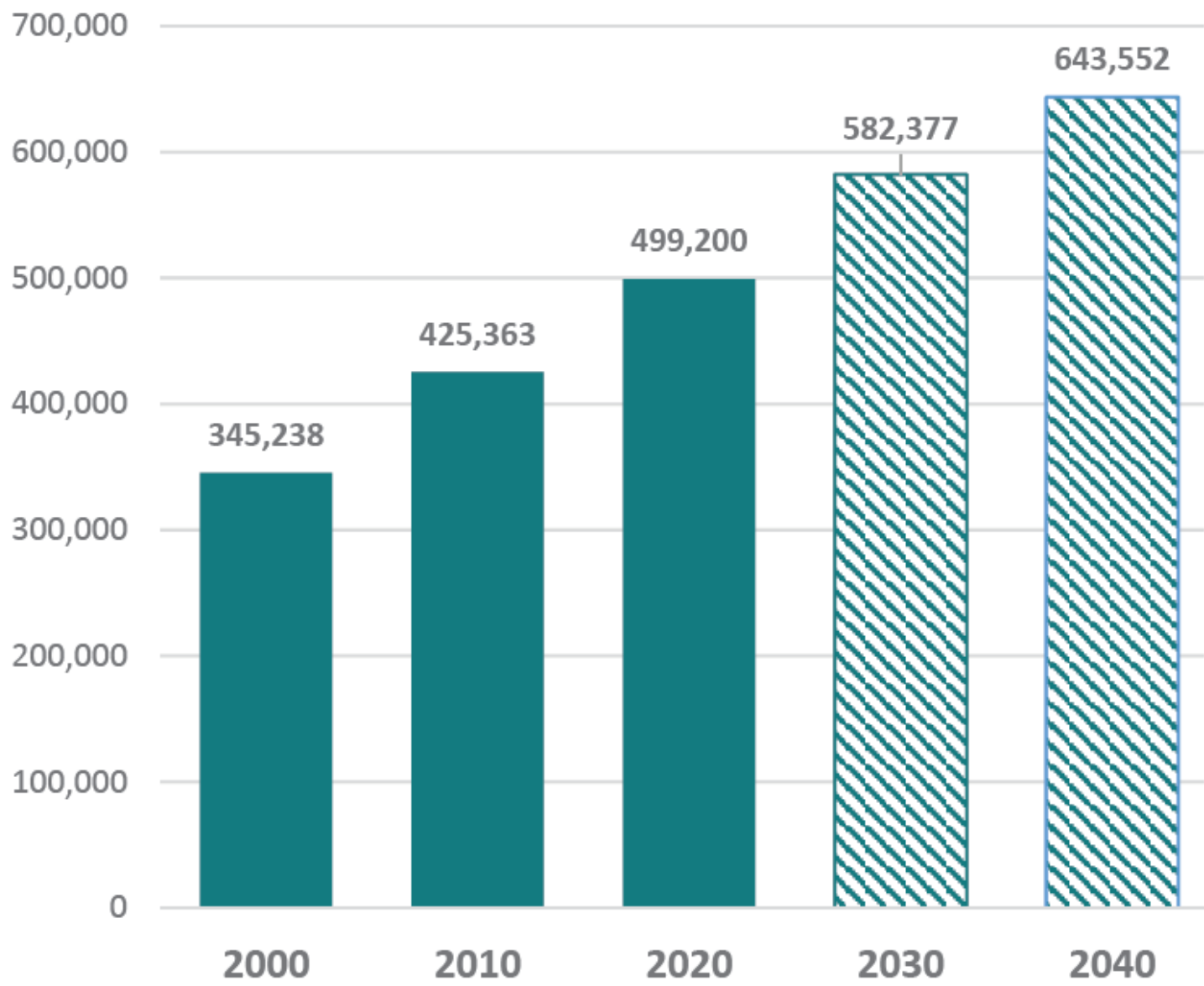
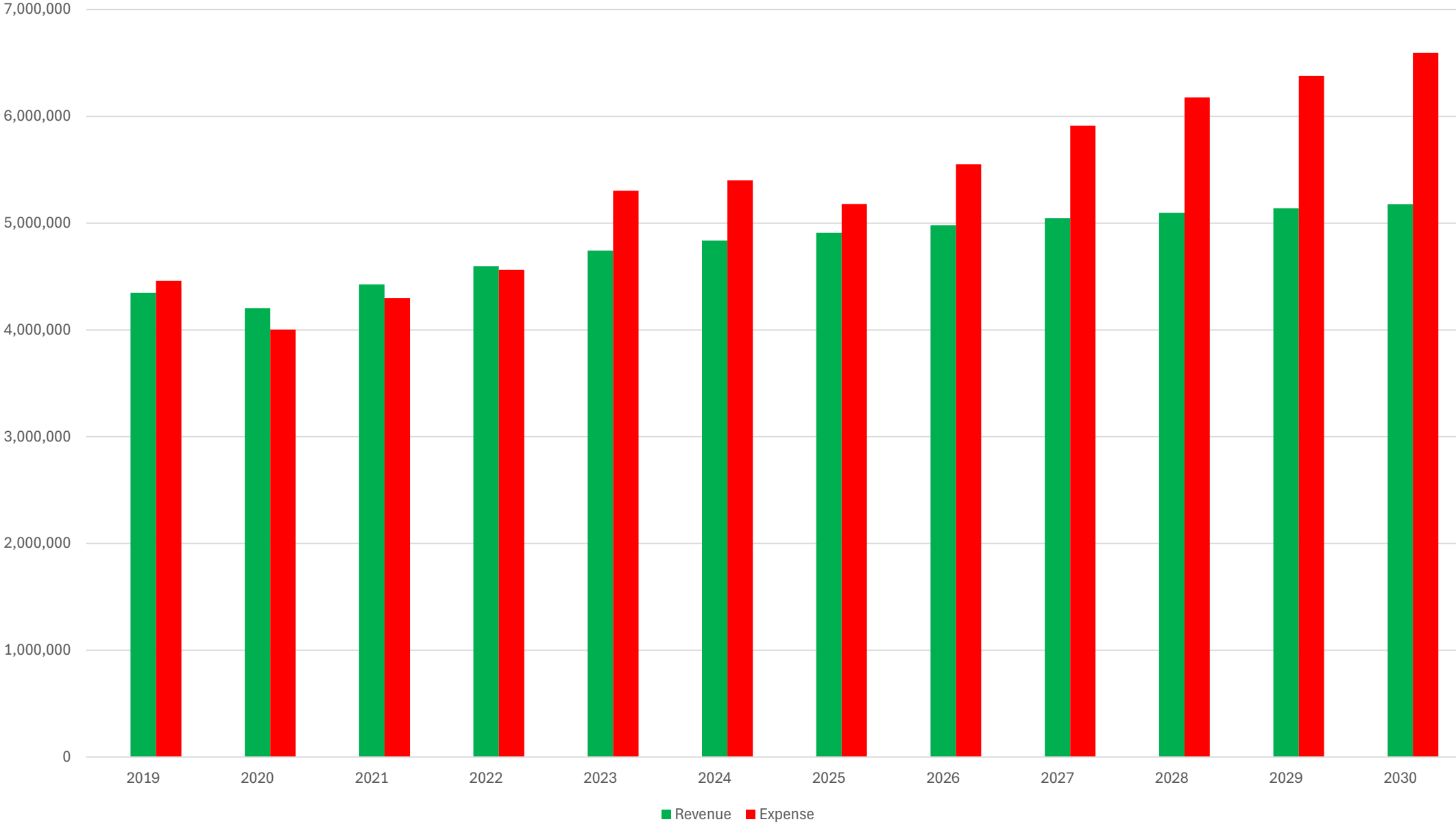
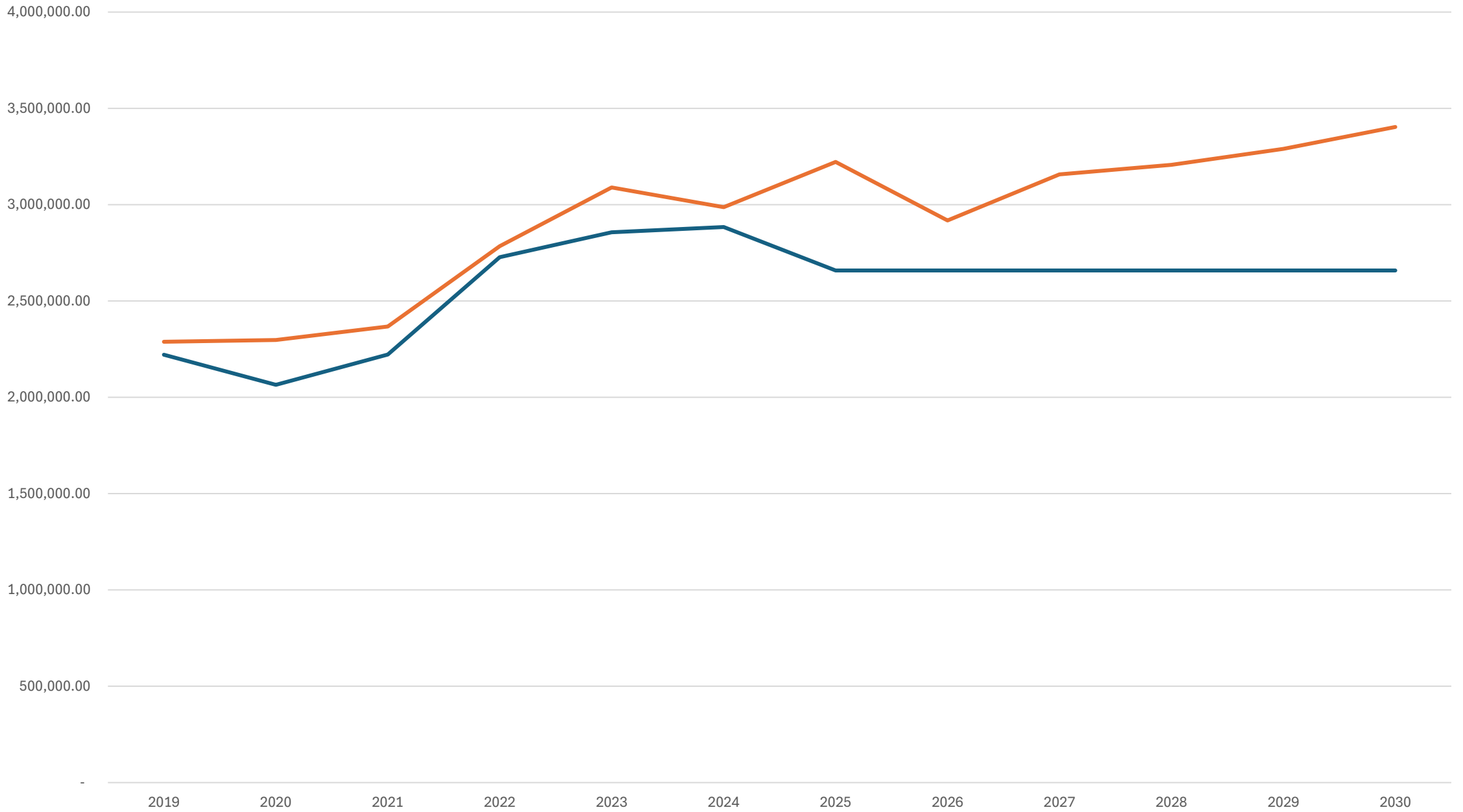


Figure 3. Population - Actual and Projected: 2000-2030 Population

District Parks Revenue and Expenditures



Regional Parks Revenue and Expenditures



District Parks						
Year	2025	2026	2027	2028	2029	2030
Revenue	4,909,300.76	4,980,602.16	5,045,818.48	5,095,367.14	5,139,491.62	5,176,099.77
Expense	5,178,687.23	5,552,478.69	5,912,432.84	6,176,642.95	6,376,794.97	6,596,130.74
Gap	(269,386.47)	(571,876.53)	(866,614.37)	(1,081,275.81)	(1,237,303.35)	(1,420,030.97)

Regional Parks						
Year	2025	2026	2027	2028	2029	2030
Revenue	2,659,067.00	2,659,067.00	2,659,067.00	2,659,067.00	2,659,067.00	2,659,067.00
Expense	3,221,848.13	2,918,387.00	3,157,451.35	3,206,863.30	3,289,691.30	3,403,476.15
Gap	(562,781.13)	(259,320.00)	(498,384.35)	(547,796.30)	(630,624.30)	(744,409.15)

\$832,167	\$831,196	\$1,364,998	\$1,629,071	\$1,867,927	\$2,164,439
------------------	------------------	--------------------	--------------------	--------------------	--------------------

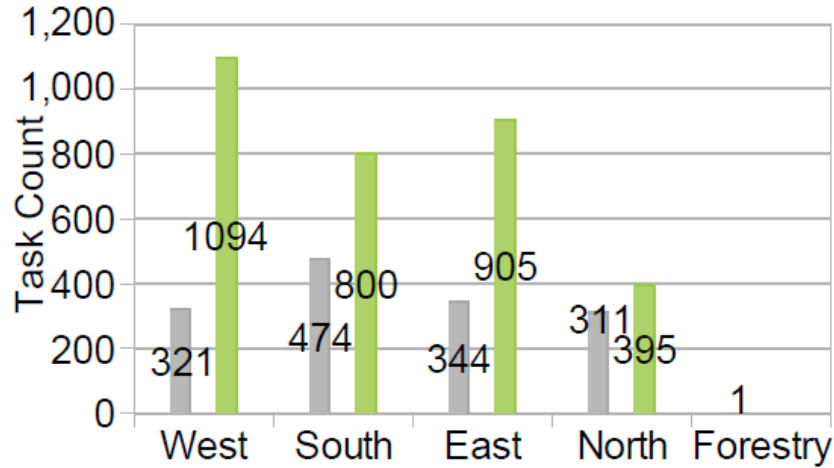
Parks Quarterly Labor Report - Q4 2024

Total Labor Hours: 13491.75

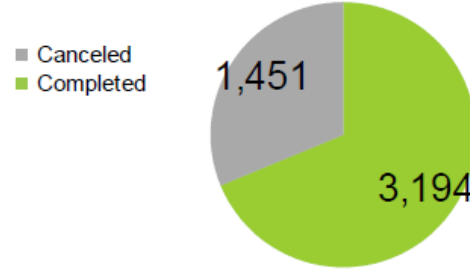
Total Completed Tasks: 3194

Total Canceled Tasks: 1451

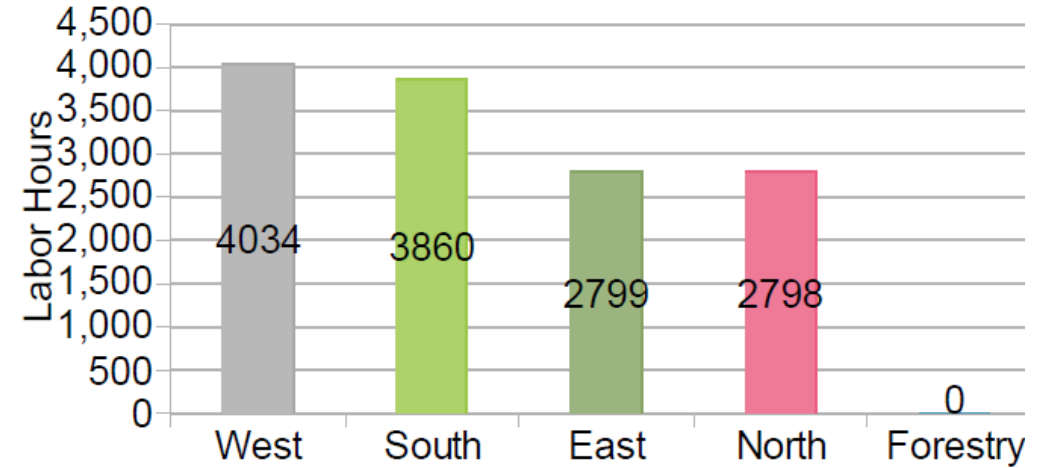
Task Counts by Status & PLD



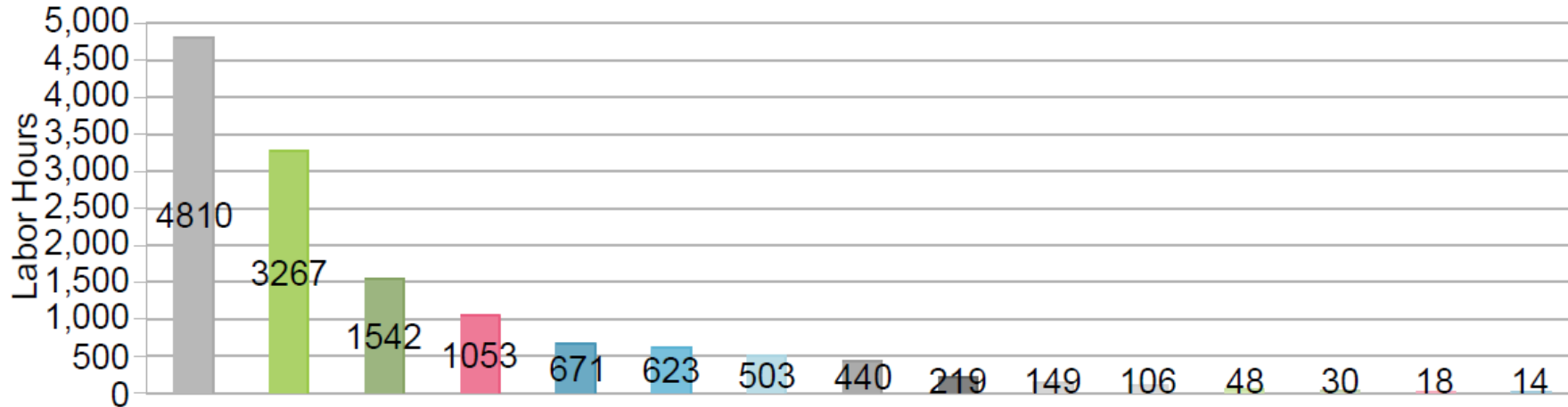
Tasks - Complete vs Canceled



Labor Hours by PLD



Labor Hours by Activity - All PLDs



- A001012 Landscape Maintenance
- A000396 Parks and Lands Light Maintenance
- A280457 Parks and Lands Miscellaneous Maintenan
- A280460 Parks and Lands Hardscape Maintenance
- A000395 Parks Miscellaneous Repairs
- A003000 Public Works General Administration
- A001009 Mow ing
- A001195 Public Works Training
- A280456 Parks and Lands Turf Maintenance
- A011272 Public Works Staff Meeting
- A280227 Graffiti Removal
- A280458 Parks and Lands Chemical Application
- A000605 Parks Monthly Playground Assessment
- A001004 Parks Volunteers Coordination
- A000105 Parks Special Events/Requests

Three Scenarios



Decline



Sustain



Fulfill

Decline Scenario

- Closure of parks
- Closure of parks amenities
- Decline in Level of Service throughout County Parks
- End new park acquisition and development
- Safety issues and liability issues throughout the system



Sustain Scenario

- Funding to fill existing gap only
- Not adequate to grow or expand the system
- Continue to invest in new parks at current level
- Balance preventative maintenance to current need
- Doesn't increase quality or level of service
- Doesn't improve quality of system
- Keep parks open
- Keep amenities open



Fulfill Scenario

- Funding to maintain level consistent with peers
- Preventative maintenance to scale with growing system
- Keep pace with growth
- Reinvest in significant regional parks



Future Funding Options

- Impact Fee Methodology Update
- Impact Fee/Rate update
- GCPD Lid Lift
- GCPD Boundary Update
- GCPD 1% plus banked capacity
- New County wide Levy
- Added MPD
- New MPD
- Increase REET
- Conservation Futures Rate Update

Future Funding Options

- Lodging Tax
- Admissions Tax
- Sales Tax
- Gas Tax
- Soft drink tax
- Tax increment Financing tools
 - Local Improvement District
 - Urban Renewal



Strategic Actions

- Rebalancing of Parks and Nature portfolio
- Revitalizing regionally significant parks
 - Operationalizing existing assets
 - Synergistic partnerships
- Plan in concert with cities
- Focus on future state and meeting growth