



# 78<sup>th</sup> Street Heritage Farm Advisory Team Meeting Minutes



Thursday, March 20, 2025, 4:00PM to 6:00PM  
Clark County Public Works 78<sup>th</sup> Street Operations Center  
4700 NE 78<sup>th</sup> Street, Vancouver, WA 98665, and  
Virtual Meeting via Microsoft Teams

---

**Advisory Team:** Sandra Brown, Bill Fickett, Lisa Bayautet, Carol Levanen, Rachel Feston

**Clark County:** Amy Arnold, Matthew Baum, Ross Hoover, Zane Karver, Lynde Wallick

**Farm Programs, Neighbors, Public Members:** Judie Stanton, Matthew Cornwell, Jason Faulds, Mikayla McGarvey, Kristine Perry, Christine

\* Not Present

---

## 4:00 PM Called to Order/Introductions

Matthew welcomed folks to the meetings and Advisory Team members and County staff introduced themselves.

## 4:02 PM Approval of Meeting Minutes

Time	Action Item
4:02 PM	<b>MOTION BY:</b> Sandra Brown <b>SECOND BY:</b> Carol Levanen
	<b>MOTION:</b> Motion to adopt these Minutes, as submitted: January 16, 2025 Minutes
	<b>DISCUSSION:</b> The Minutes have been approved.
	<b>IN FAVOR:</b> All <b>OPPOSED:</b> None <b>ABSTAINED:</b> None

## 4:02 PM Farm Operations Report/Plan – Zane Karver

Zane discussed various updates regarding the children's structure, repairs to the rotavator, materials for the Latinos Unidos Y Florenciado field, when the pump will be ready, and that they are gearing up for the Wetland Restoration project that should be in June-July 2025.

Lynde shared a picture of what the children's structures look like that were installed.

## 4:03 PM Farm Operations Guidelines updates – Matthew Baum

Matthew discussed there are no updates because the leases are still being reviewed.

## 4:04 PM Heritage Farm Public Access Improvements project – Lynde Wallick

Lynde discussed a brief history of when the master plan was adopted, the direction from Council, and the Sustainability Plan's next steps which included developing the public access improvements at the farm. Lynde also discussed the types of structures to add to the farm for the improvements, possible access points for adding a trail at the farm and what that entails, and indicated this is in the planning and design phase only.

Sandra and Lynde discussed the shape of the trail on the farm and Zane and Lynde discussed the type of material that would be used to create it. Carol and Matthew also discussed the idea of having equestrian fields at the farm, and Carol and Lynde discussed the possibility of parking for horse trailers at Hazel Dell Park. Lisa and Lynde also discussed if this project is currently in the Capital Improvement Plan and Sandra and Lynde discussed the location of where the building would be.

Lynde also discussed the process for the project including the consultant selection, conversations with the Historic Preservation Commission, the project kick-off, the concept and design development, the review and procurement process, and the steps for public involvement on the trail concept. Matt discussed the trail design further and Carol and Lynde discussed how the existing administration building is used.

#### **4:27 PM Public Comments**

Matthew Cornwell discussed the history of the Clark County Food Bank, who the key contributors are, the acreage they have, and the number of pounds of food they distribute.

Matthew C. also discussed an overview of the program from 2024 including their grant purchases and community engagement, the number of volunteers they had, and some of the challenges they have faced. Matthew C. discussed growth in the program as well regarding them receiving a donation for new equipment, establishing more visibility on operations, and being a good neighbor with its partners. Matthew C. also discussed their goals which include more structure for their systems, creative programming to involve more youth groups participation, and to provide more support for local farming initiatives.

Carol, Matthew C., and Matthew discussed how the food is distributed to its partner agencies, that there was a past program for volunteer efforts, who benefits from their contributions, and the types of programs to get involved. Carol and Matthew C. also discussed the duties that volunteers perform, the types of soil they use, providing aid with tractor maintenance, and performance reviews that are done, and Matthew C. said the Food Bank will be hiring a new program director in the next month or so. Bill and Matthew C. discussed if the Food Bank is still farming the piece of property to the north that was donated to them.

Lynde discussed that the Parks and Nature Planning and Development team will be at the Mother's Day Plant Sale at the farm on May 10, 2025 and encouraged members of the Advisory Team to volunteer their time.

#### **5:07 PM Open Forum – Questions and Answers**

Matthew thanked members from the Clark County Food Bank for attending the meeting and sharing their updates. Matthew also reminded folks that the Wetland Restoration project will begin the week after the Mother's Day plant sale at the farm.

Matthew and Sandra discussed the status of doing annual reports.

#### **5:11 PM Adjournment**

Submitted by Amy Arnold, Secretary

**All meetings are scheduled from 4:00 PM to 6:00 PM**







# Heritage Farm Public Access Improvements

---

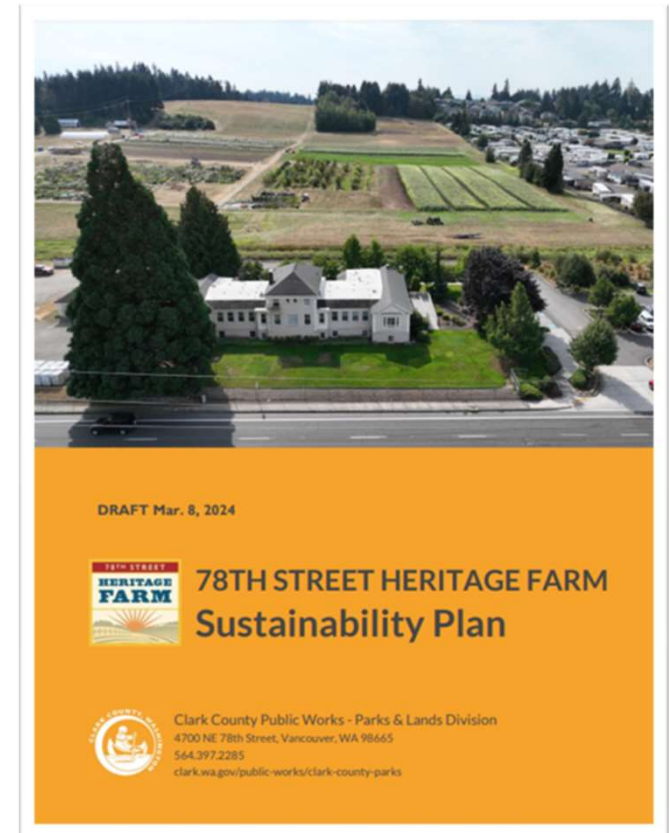
Heritage Farm Users Coordination Meeting  
Lynde Wallick, Park and Trails Planner  
David Stipe, Planning and Development Manager

March 5, 2025

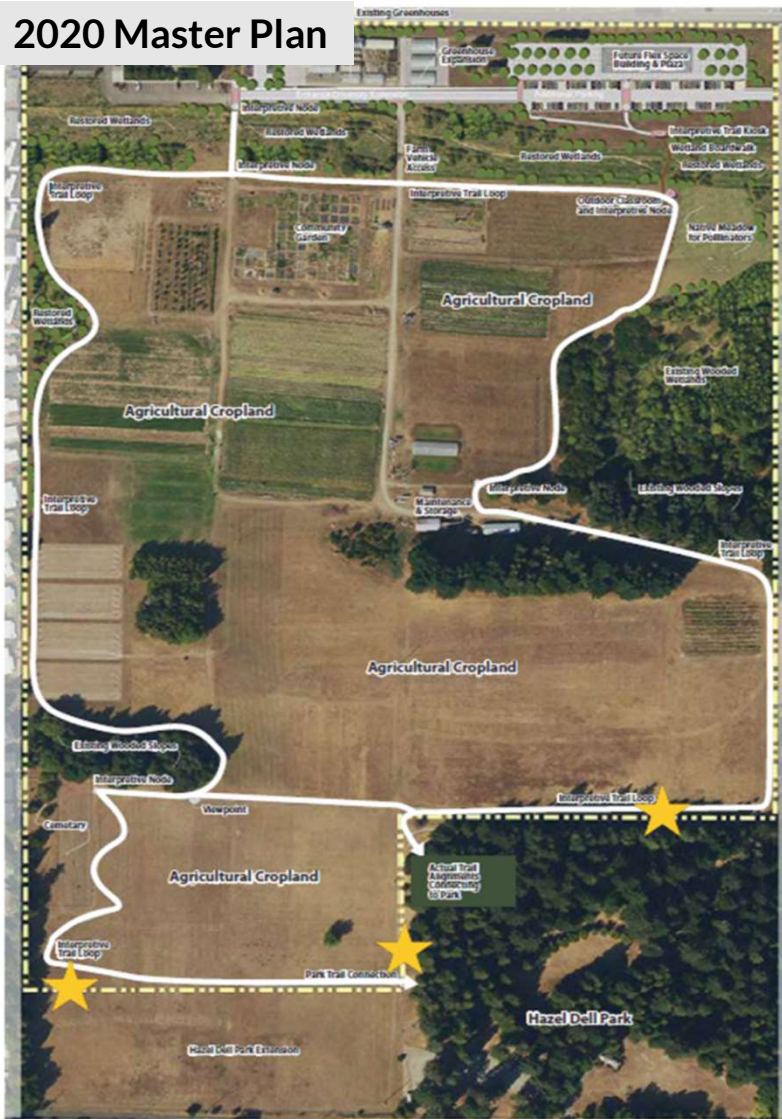


# Sustainability plan next steps

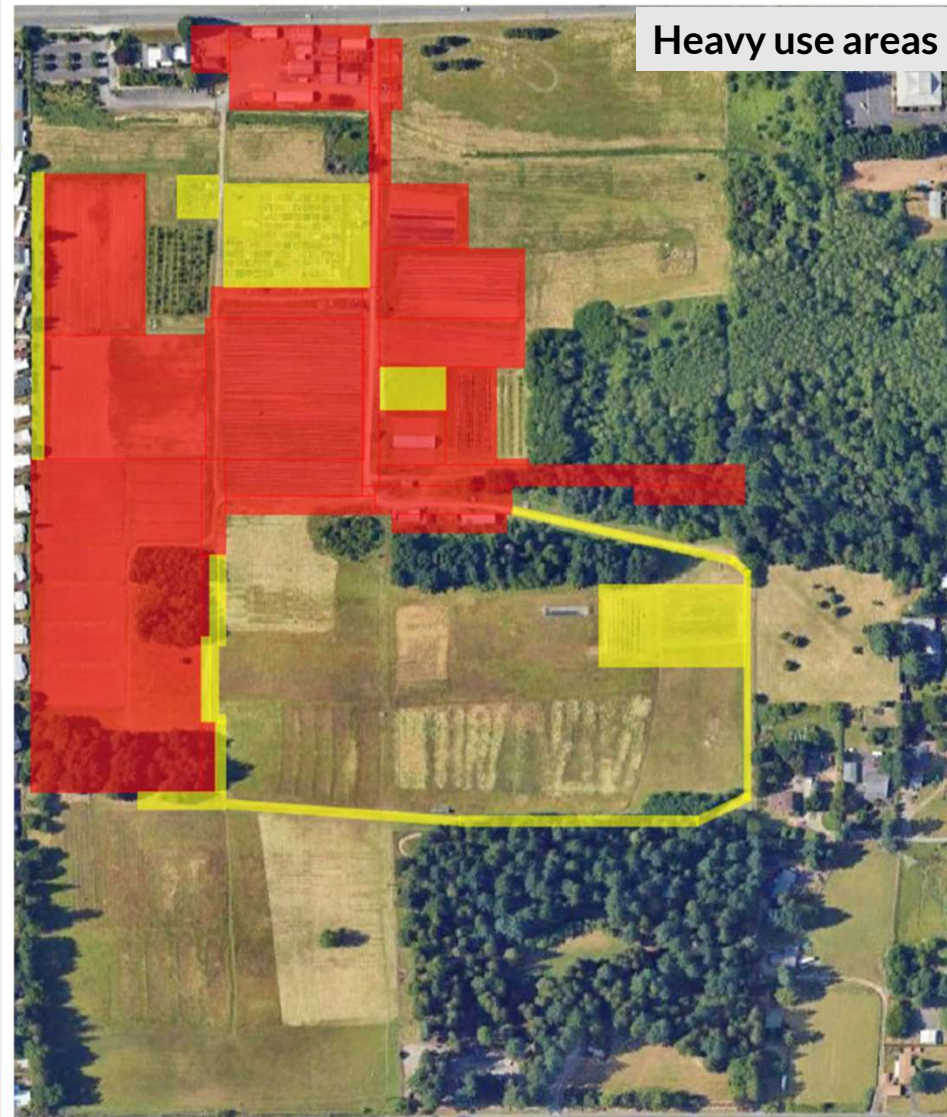
1. Improve relationships with existing farm partners.
2. Improve inclusion and equity in farm access to historically underrepresented groups in the community.
3. Build on the trust developed during the development of this plan.
4. Explore additional farm partner relationships
5. Finalize the land lease program to recoup the county's costs.
6. Develop a fee for service program.
7. Analyze current cost sharing and operations relationships.
8. **Develop a first phase of public access improvements**
9. **Develop a safety and security plan associated with public access**
10. Explore additional revenue options.



## 2020 Master Plan



## Heavy use areas





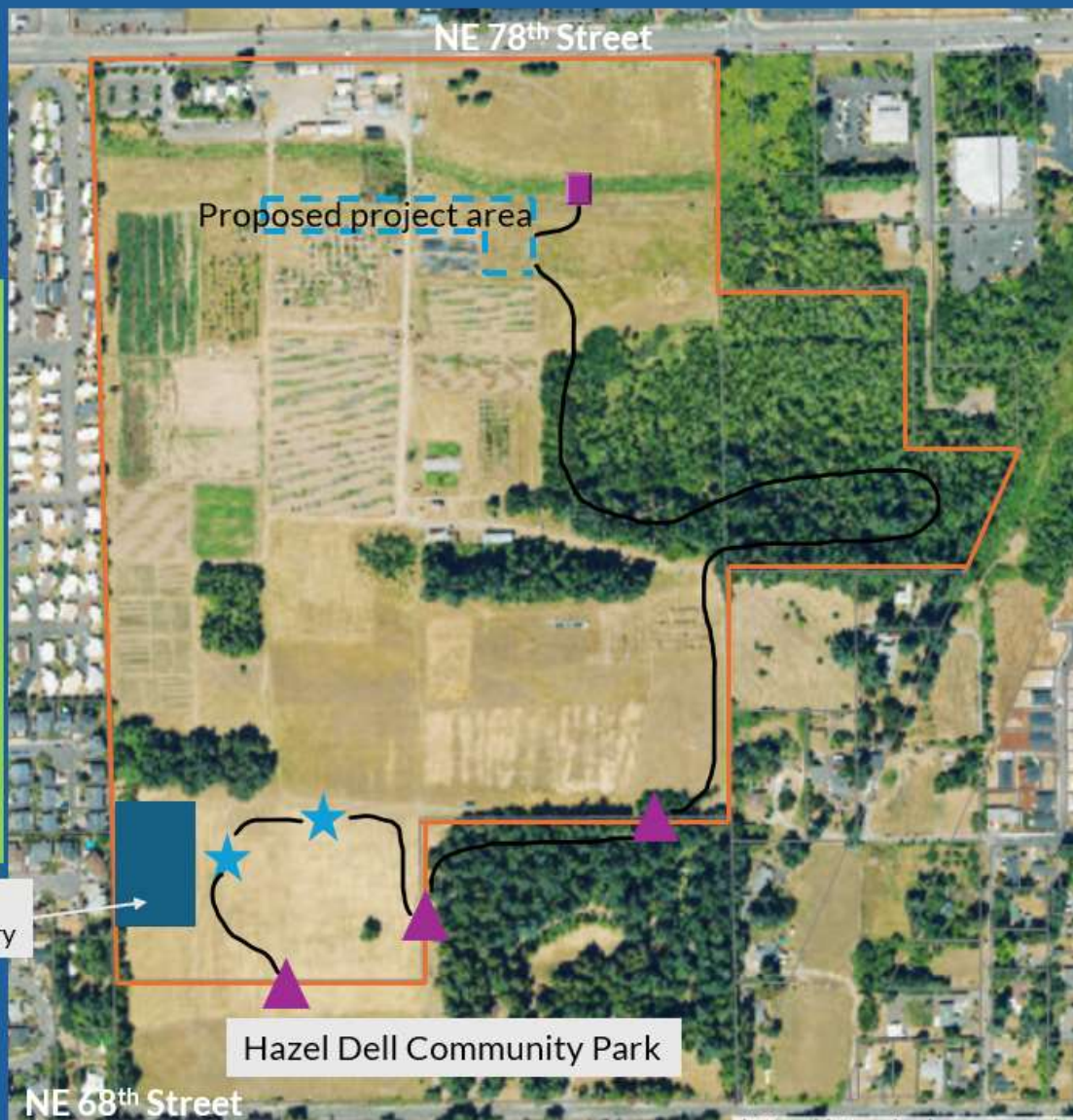
**Notes:**

- Scope within "Proposed project area" will include concept through construction.
- Trail outside of "Proposed project area" will include conceptual design for future development.
- Project will not disrupt existing community garden or historic cemetery.
- Project area is approximate.

- Property boundary
- - - Proposed project area
- Proposed recreational trail
- ▲ Trail connection point
- ★ Interpretive/viewpoint
- Boardwalk over wetland

Historic cemetery

Hazel Dell Community Park



# Project process

---

- **Consultant Selection**
- **Historic Preservation Commission discussions**
- **Project kickoff**
- **Concept development – building siting**
- **Concept development – trail layout**
- **Design development – building and site work for building**
- **Review process: land use, archeology, historic preservation, Clark County permitting processes**
- **Procurement processes: building purchase & general contractor – anticipate construction in late summer 2026**
- **Public involvement for trail concept**





# CLARK COUNTY FOOD BANK AT HERITAGE FARM

**2009:** Bill Coleman plants 1 acre of carrots at Heritage Farm in response to 2008 financial crisis. Food Bank Coalition (grass roots initiative).

## Key Contributors

Blair Wolfy, Jan Vis, Dave L., The Grell's, John Presson, Nancy Funk + CCFB AmeriCorps

**2024-25:** The Clark County Food Bank is farming 11-acres at Heritage Farm with an annual goal of 100,000lb and has distributed over 1,000,000lb's since 2009.

## PROGRAM 2024

**Heritage Farm + Grant Purchases (LFPA & F2FP) + Gleaning = 480,476lb in 2024**

**2024 Community Engagement:** 1,300 volunteers and 7,000 hours (Farm Advocacy)

**Reality:** (Program) 480,476lb / 10,119,642lb (2024 Total Food Received) = **4.74%**

## CHALLENGES

**Resourcing:** Greenhouse (Master Gardener Foundation), Equipment (WSU), Shed (PIC)

**C.I.P to CCFB Transition:** Respect, Leadership, and Program Cost + Accountability

**Weed Suppression & Soil Health:** Impact of uncertainty and low budget resourcing

## GROWTH

**Equipment:** Barb Wood's recent donation designated for CCFB farming equipment

**Visibility:** CCFB boots on the ground involvement and investment in Farming Program

**Neighbor:** P.I.C., Latinos Unidos, Snap Ed, Master & Comm. Gardeners, Local High Schools

## GOALS

**Systems:** Work Parties, Volunteer Roles, Secure Storage, and Scheduled Maintenance

**Programming:** Increased youth visibility and low acuity mental health work

**Local Food Resiliency:** Support of local farming initiatives and positioning for growth