

Ross discussed other updates including the staff reports for the April 21, 2026 council meeting which include a request for new capital projects for the Salmon Creek Greenway trail and the Daybreak Regional Park boat launch, and a request to enter a contract with Berger Partnership for design services at Orchards Community Park. Jordan, David, and Ross discussed whether Daybreak Regional Park and the Salmon Creek Greenway are eligible for federal FEMA (Federal Emergency Management Agency) funding.

4:12 PM Unfinished Business

There is none.

4:12 PM New Business – Regional Parks Funding report for Council Recommendation – Ross Hoover

Ross discussed a brief background of the Regional Parks Funding Task Team regarding when it was created and why and reviewed the summary of the team's progress which included reviews of rising costs and population growth, analysis of how maintenance has suffered at various parks, and review of park operating expenditures per capita by city. John and Ross discussed how the median values were configured and John suggested comparing just the local and Washington state data.

Ross also discussed the full-time employees (FTE) data per 10,000 residents in the county and cities, the timeline of anticipated population growth, and funding models that other regions have used which include a Metropolitan Parks District (MPD) funding structure and a Regional Levy. Ross discussed the existing MPD boundary in Clark County, indicated by the dashed purple line on page 9, Jordan, Ross, and Janis discussed examples of other cities that have done this and how the MPD board is governed.

Ross discussed the two recommended actions, that this topic will be presented to the Clark County Councilors at a work session on May 20, 2026, and what conducting market research entails. Jessica and Ross discussed if there are inter-county connections that share districts and/or resources; Jordan and Ross discussed the number of times market research is needed and why we are using it; Brandon and Ross discussed the type of information we are hoping to gather; John and Ross discussed how the MPD boundary would change; Janis, John, Jordan and Ross discussed a possible third alternative regarding the GCPD (Greater Clark Parks District) expansion and listing that as an option; Janis, Ross, Jordan, and Jim discussed how the expansion of the GCPD would operate; John and Ross discussed what thoughts the other cities have about these options and how it would affect their funding mechanisms; Brandon, Jordan, David and Ross discussed the governance board structure for expanding the parks district; and Russell and Ross discussed how the changes will impact county staff time and its infrastructure.

Ross also discussed how an Interlocal Agreement (ILA) would be developed and he and Advisory Board members discussed various other topics including a question from Jordan about formatting on pages 7 and 8; a question from Janis about seeing another draft before it's presented to Council; a question from Brandon about the timing for voter approval and a preferred schedule; comments from Janis to list clear intentions of what's needed and what's at risk; comments from Brandon that the way the message is delivered to the community about this is important; a question from John whether there's a draft ILA they can view; a question from Jordan about the timeline and funding for a new regional infrastructure; and a question from Russell about how funding will be distributed to other cities.

Regional Funding Task Team

Public Works – Parks and Nature Division



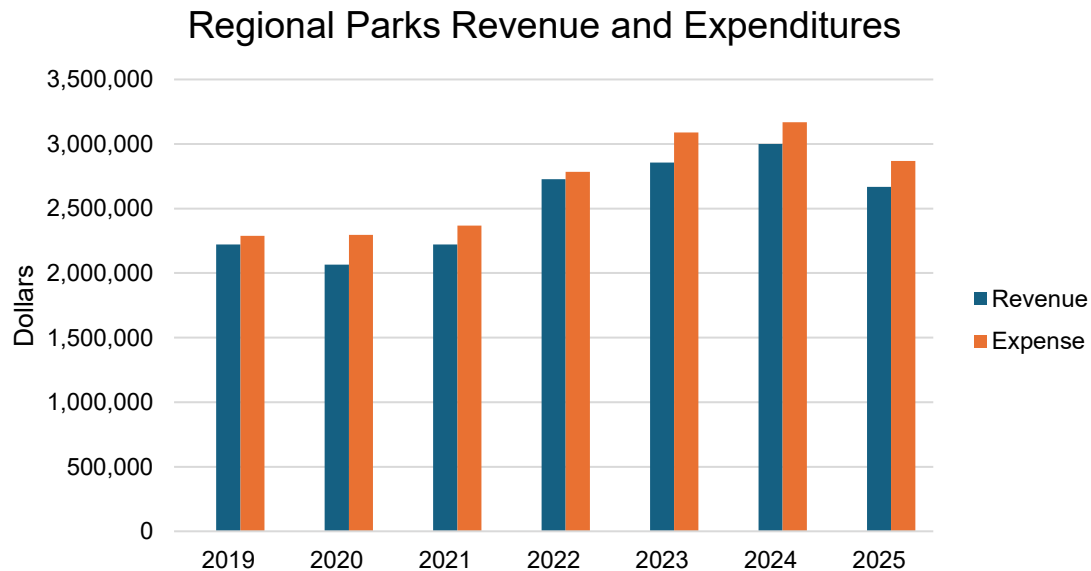
Summary of Task Team Progress

- Summary of needs
- Benchmarking
- Model comparison
- Recommended actions



Summary of Needs – Clark County

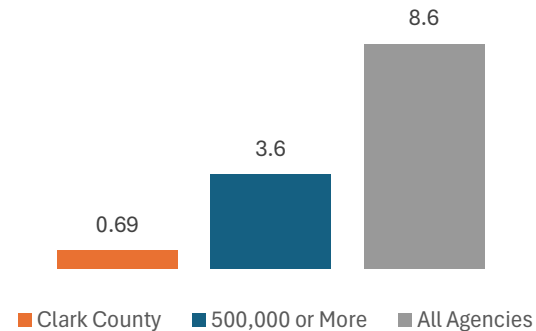
- Clark County parks system is not meeting its existing needs due to a lack of available funding, rising costs, and rapid population growth.
- For the past 5 years, the County has had to use reserve funds just to cover the basic services at our Regional Parks.



Summary of Needs – Clark County

- With an already lean staff, there are no longer ways to cut costs.
- Park up-keep has suffered.
- Maintenance has been deferred.

FTE per 10,000 residents compared to national median



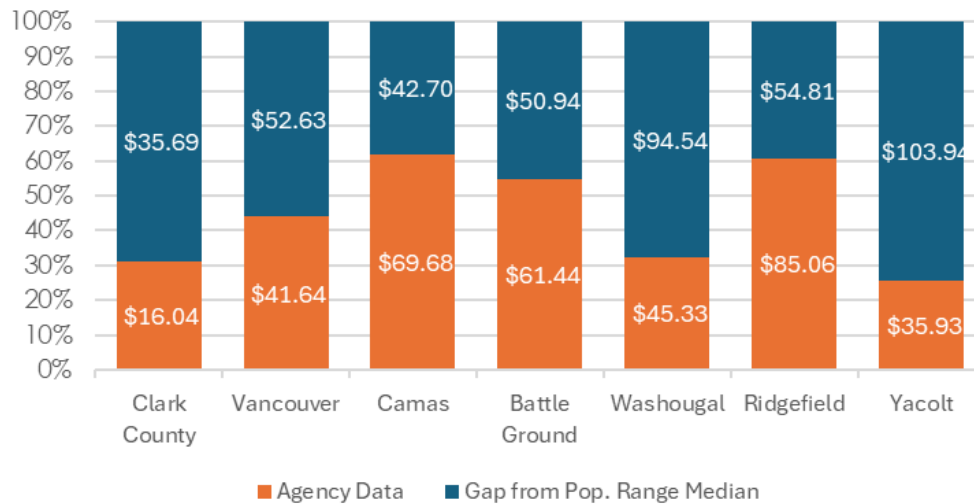
33% of daily tasks assigned are not being completed




Benchmarking – All regional providers

Parks Operating Expenditures Per Capita

Median values: \$51.73 \$94.27 \$112.38 \$112.38 \$139.87 \$139.87 \$139.87



All park systems are below the national median for operating expenditures of similar populations.

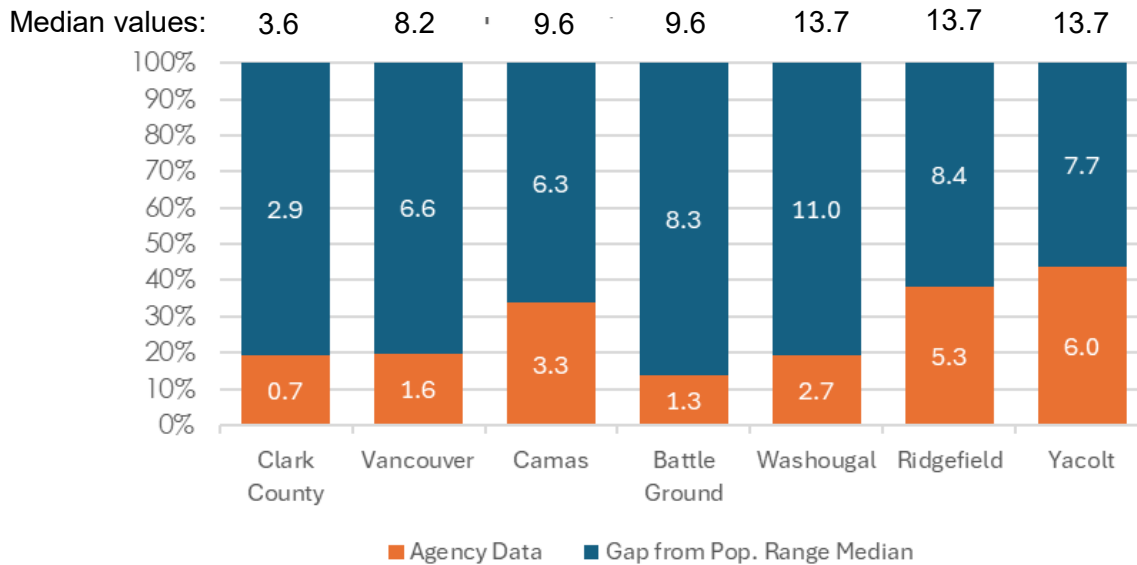


Each park system compared their metrics to the national median for communities of their size. Park system data are plotted in orange and the gap to meet the national median is plotted in navy blue.



Benchmarking – All regional providers

Full Time Employees per 10,000 residents



All park systems are below the national median for full time employees (FTE) per 10,000.

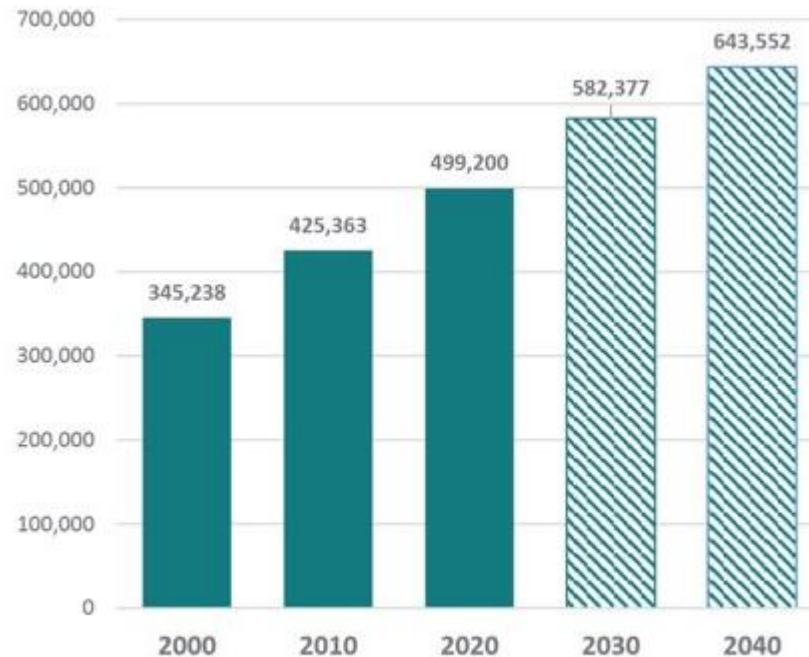


Each park system compared their metrics to the national median for communities of their size. Park system data are plotted in orange and the gap to meet the national median is plotted in navy blue.



Future Needs

- County expected to grow 34% over the next 20 years
- Park agencies need to plan for continued expansion and upgrades to aging infrastructure



Population - Actual and Projected: 2000-2030 Population

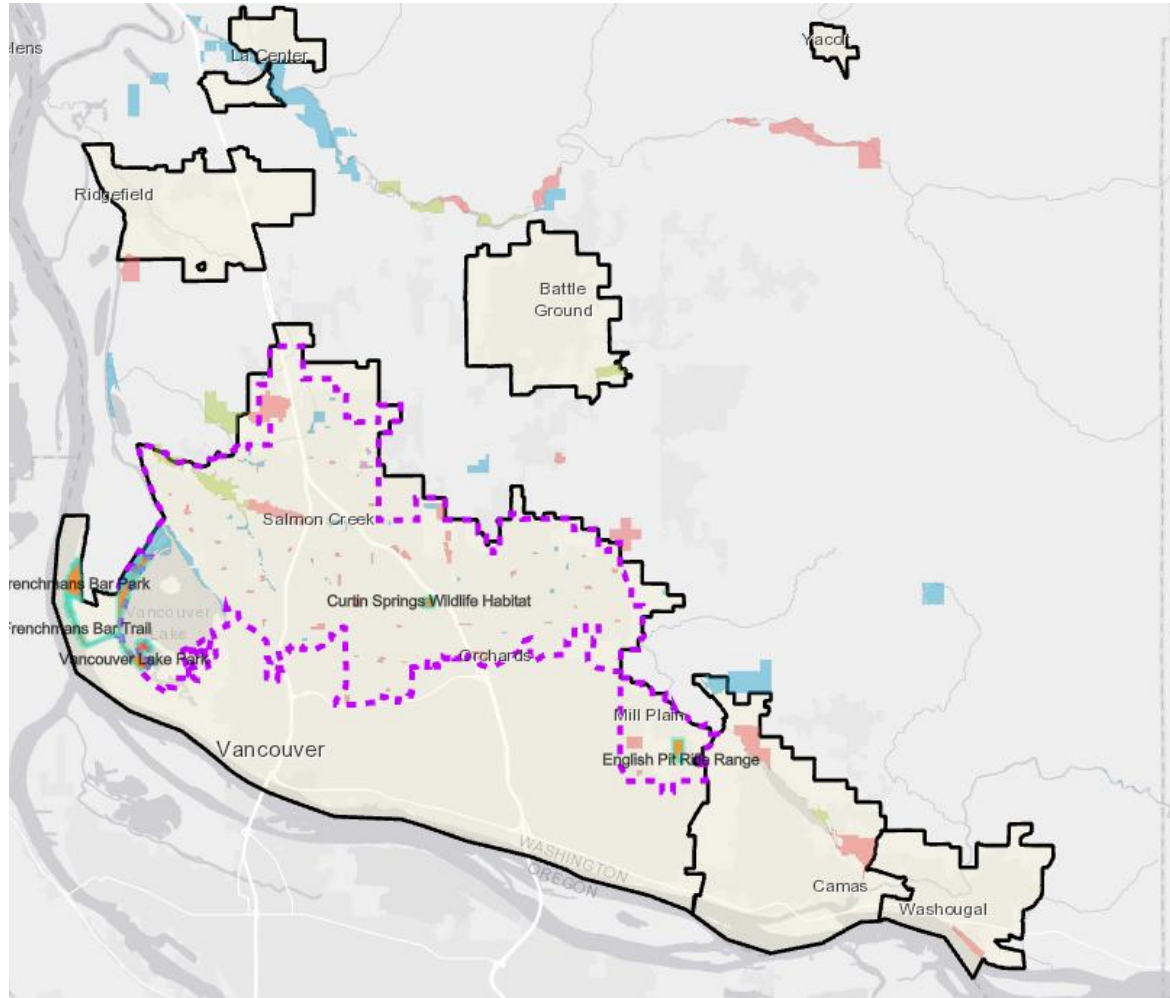


Funding Models

	Metropolitan Parks District - funding structure	Regional Levy (county-wide)
Requires voter-designated boundary	●	
Funds cannot leave district	●	
Permanent levy	●	Voter renewal required
Board/Council oversight	●	●
Potential for shared revenue	●	●
Potential for shared resources	●	●
Funds can be used for operations (both parks and recreational services) and capital	●	●



Existing MPD: Greater Clark Park District



RECOMMENDED ACTIONS

- **Conducting market research** to provide the data, feasibility evaluation, and preparator work needed for County Council to make a decision on a potential future ballot measure.
- **Developing a framework for revenue sharing** by directing county staff to continue to work with city representatives so that city park providers can also benefit from a potential revenue source dedicated to parks.



Market Research

What is it?

- An external agency that provides polling information on potential ballot measures
- Collects statistically valid survey data from County-wide population

What will it provide?

- Feasibility
- Price sensitivity
- Community values and motivations
- Strategic timing
- Accountability benchmarking and baseline data for future evaluations of levy success
- Other preparatory work to establish a ballot measure



Interlocal Agreement (ILA) Development

Interlocal agreements with participating cities to share some of the revenue if a ballot measure is approved

Revenue sharing model development includes:

- Mechanics
- Calculation
- Clarification of intended use of funds
- Articulating autonomy within a shared purpose
- Specific mutual investment (regional parks, regional trails)
- Synchronization with City goals from County investment
- County commitments to cities



PAB Guidance and Goals

1. Why are you all here?
 - a. Review plans, policies, etc. to ensure the issue at hand meets the goals and objectives set by the division.
 - b. Insights on issues and directions from a constituent's perspective.
 - c. Represent different user groups in policy and plan development.
 - d. Improve public outreach efforts as a conduit between users and staff.
 - e. Inform policy, budget, funding, etc. through participation in public dialogue.
 - f. Provide perspective on issues from outside the staff box.
 - g. Collaborate as a group to provide varied perspectives.
 - h. Commitment to the community in which you live.
 - i. Public service desire.
 - j. Share personal expertise at the community level.
 - k. Personal growth on public process, government practices, etc.
2. What role do you want to play in the future?
3. How do you feel about the current level of influence, time commitment, etc.?