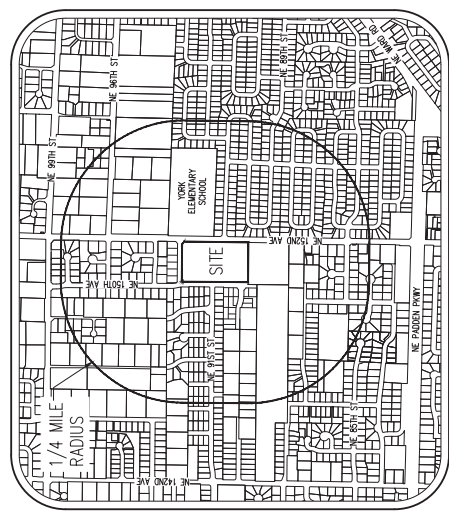


NE 152ND AVENUE SUBDIVISION

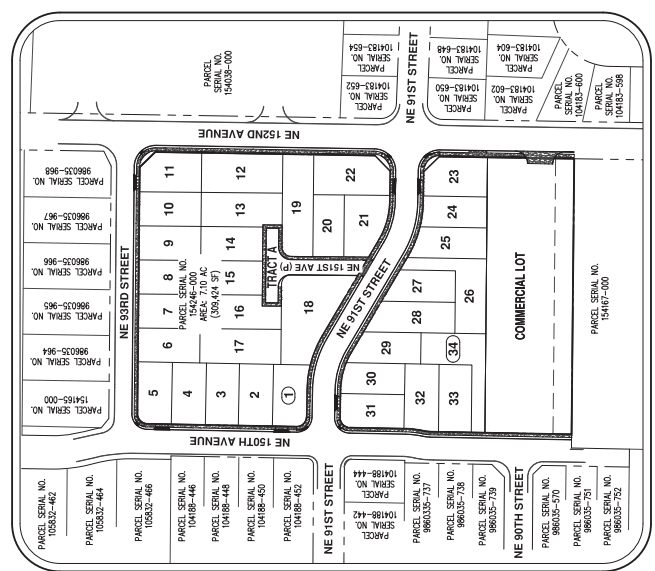
TYPE III SUBDIVISION PLANS

SHEET INDEX

- P1.0 COVER SHEET
- P2.0 EXISTING CONDITIONS PLAN
- P3.0 PROPOSED IMPROVEMENTS PLAN
- P4.0 PRELIMINARY STORMWATER PLAN
- P5.0 PRELIMINARY STREET, SANITARY SEWER, AND WATER PLAN
- P6.0 PRELIMINARY CIRCULATION AND TRAFFIC MANAGEMENT PLAN
- P7.0 PRELIMINARY LANDSCAPE AND LIGHTING PLAN



VICINITY MAP
 N.T.S.



SITE MAP
 N.T.S.

LEGEND	
EXISTING	PROPOSED
DEODOROUS TREE	STORM SEWER CLEAN OUT
COMPOUS TREE	STORM SEWER CATCH BASIN
FIRE HYDRANT	STORM SEWER MANHOLE
WATER BLOWOFF	GAS METER
WATER METER	GAS VALVE
WATER VALVE	GUY WIRE ANCHOR
DOUBLE CHECK VALVE	POWER POLE
AIR RELEASE VALVE	POWER WALLT
SANITARY SEWER CLEAN OUT	POWER JUNCTION BOX
SANITARY SEWER MANHOLE	POWER PRESTAL VALVT
SON	COMMUNICATIONS VALVT
STREET LIGHT	COMMUNICATIONS JUNCTION BOX
MILEUX	COMMUNICATIONS RISER
RIGHT-OF-WAY LINE	PROPOSED
BOUNDARY LINE	PROPERTY LINE
CENTERLINE	DITCH
CURB	EDGE OF PAVEMENT
EASEMENT	FENCE LINE
FENCE LINE	GRAVEL EDGE
POWER LINE	OVERHEAD WIRE
COMMUNICATIONS LINE	FRONT OPTIC LINE
STORM SEWER LINE	GAS LINE
SANITARY SEWER LINE	WATER LINE

PRIVATE ROAD NOTE
 CLARK COUNTY HAS NO RESPONSIBILITY TO IMPROVE OR MAINTAIN THE PRIVATE ROAD(S) CONTAINED WITHIN OR PROPERTY(IES) DESCRIBED ON THIS PLAN. ANY PRIVATE ACCESS ROAD SHALL REMAIN A PRIVATE ROAD UNLESS IT IS UPGRADED TO PUBLIC ROAD STANDARDS AT THE EXPENSE OF THE DEVELOPER OR ADJOINING LOT OWNERS TO INCLUDE HARD SURFACE PAVING AND IS ACCEPTED BY THE COUNTY FOR PUBLIC OWNERSHIP AND MAINTENANCE.

AW. NUMBER: 5174-01
 EXPIRES: 5/27/2020
 NAME: SETH HALLING
 LICENSE TYPE: P.E.
 SPECIALTY: ELECTRICAL