

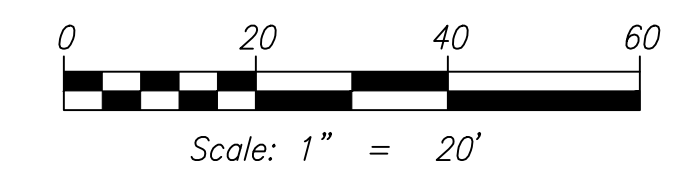
ZONING = R1-20

PARCEL SERIAL NO.
119452-030

ZONING = IL

PARCEL SERIAL NO.
119450-000

PRELIMINARY
NOT FOR CONSTRUCTION

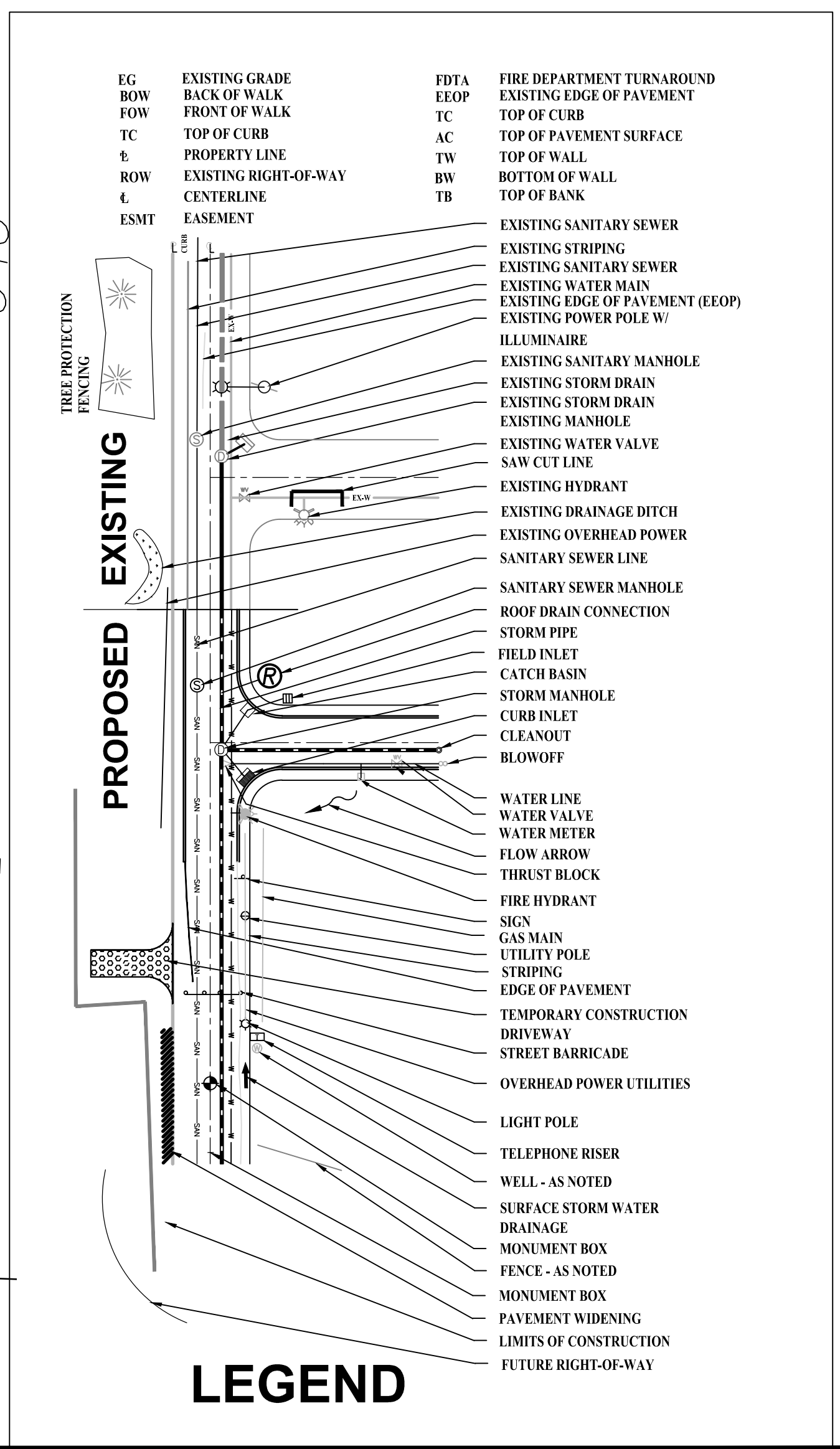
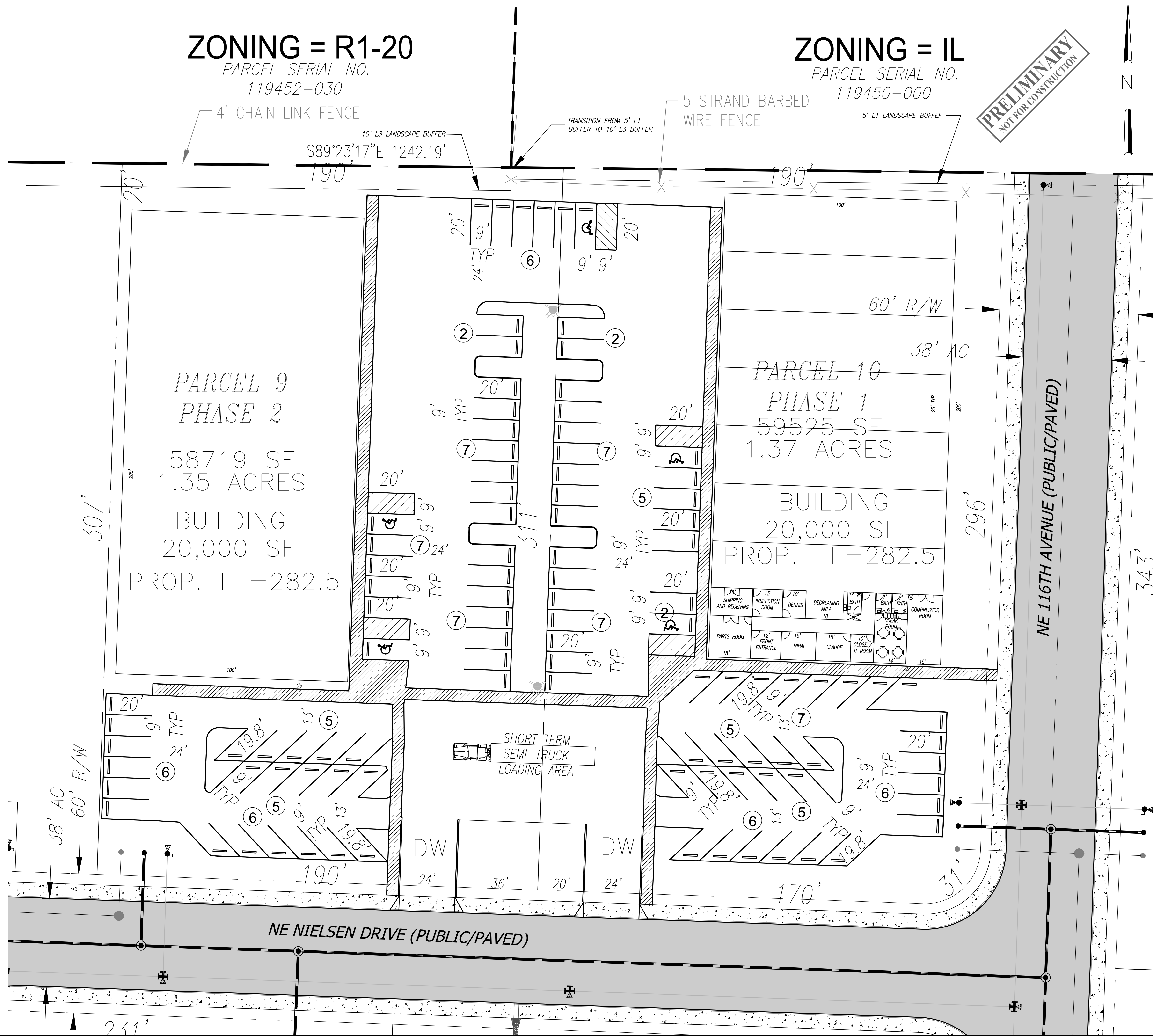


PARKING: 10

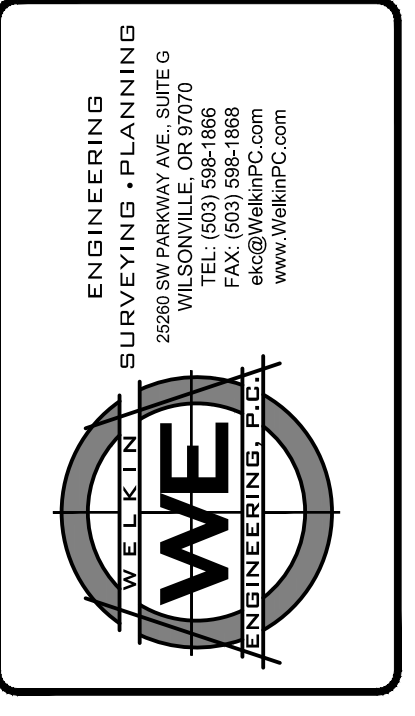
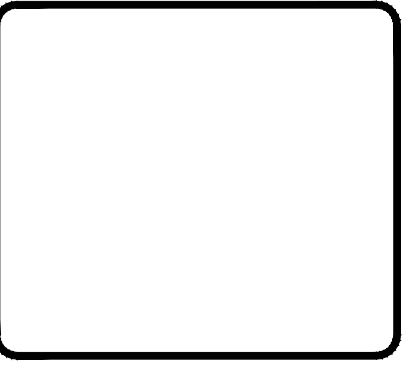
110 PARKING SPACES SHOWN, BUT SUBJECT TO CHANGE FOR ROLL-UP DOOR AND HANDI-CAP SPACE LOCATIONS. THERE WILL BE A RECIPROCAL PARKING AGREEMENT BETWEEN PARCELS 9 AND 10. NOTE: FOR LIGHT INDUSTRIAL MANUFACTURING 1 PARKING SPACE IS REQUIRED FOR EVERY 500 SF OF BUILDING, OR 80 SPACES FOR THE SITE.

TRANSIT:

NE 117TH AVE (SR503) IS A TRANSIT ROUTE. THE NEAREST BUS STOP IS 3,780 LF TO THE SOUTH, FRONTING PRAIRIE HIGH SCHOOL. BUS LINE 7 SERVICES THIS ROUTE FROM BATTLEGROUND TO THE VAN MALL TRANSIT CENTER, WHERE TRANSIT ACCESS THROUGHOUT THE REGION CAN BE OBTAINED.



NO.	DATE	REVISION



SITE PLAN

CLAUDES ACCURATE MACHINING
CLARK COUNTY

DESIGNED BY:	EKC
DRAWN BY:	
CHECKED BY:	
DATE:	8/1/18
SCALE:	HORIZONTAL
	VERTICAL
PROJECT NO.:	18-119.01
SHEET	3

DATE PLOTTED: Jul 30, 2018 - 1:29pm
REF: DRAWING FILE: P:\Project Data\18-119.01-Claude's Machinery\Layout\Plan\18-119.01-CONTRACTOR-PPHASE.DWG