


# Proposed New Shoreline Designation Map

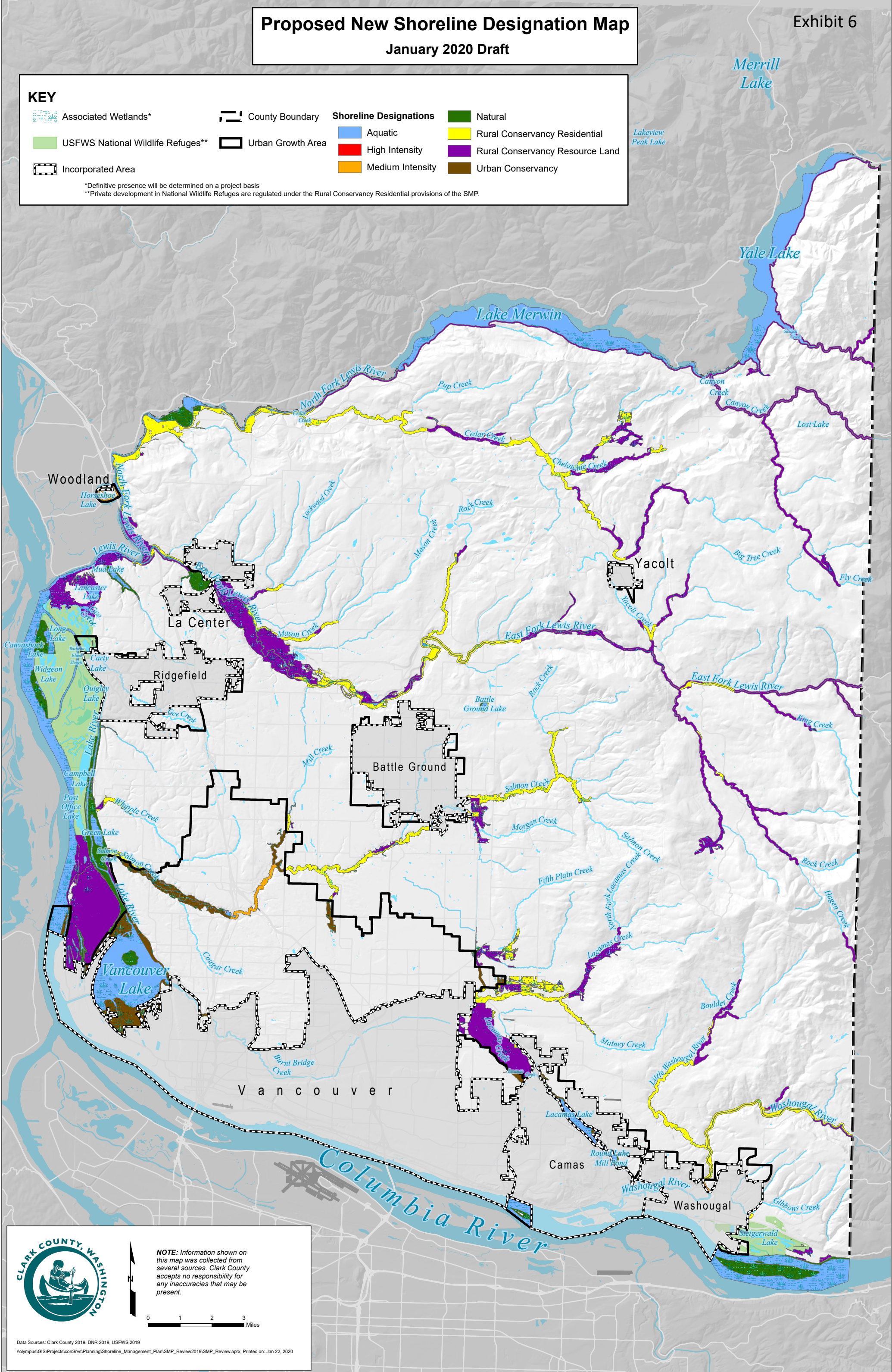
January 2020 Draft

Exhibit 6

## KEY

- |  |   |  |   |
|--|---|--|---|
|  Associated Wetlands*              |  County Boundary   | <b>Shoreline Designations</b>  |  Natural                         |
|  USFWS National Wildlife Refuges** |  Urban Growth Area |  Aquatic          |  Rural Conservancy Residential   |
|  Incorporated Area                 |   |  High Intensity   |  Rural Conservancy Resource Land |
|  |   |  Medium Intensity |  Urban Conservancy               |

\*Definitive presence will be determined on a project basis  
 \*\*Private development in National Wildlife Refuges are regulated under the Rural Conservancy Residential provisions of the SMP.



**NOTE:** Information shown on this map was collected from several sources. Clark County accepts no responsibility for any inaccuracies that may be present.

0 1 2 3 Miles