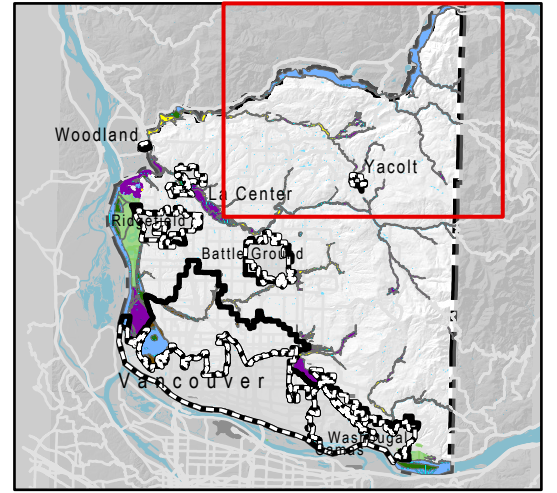


**SMP Map A1**  
January 2020 Draft



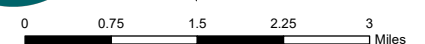
**KEY**

- Associated Wetlands\*
- USFWS National Wildlife Refuges\*\*
- Incorporated Area
- Urban Growth Area
- County Boundary
- Shoreline Designations**
- Aquatic
- High Intensity
- Medium Intensity
- Natural
- Rural Conservancy Residential
- Rural Conservancy Resource Land
- Urban Conservancy

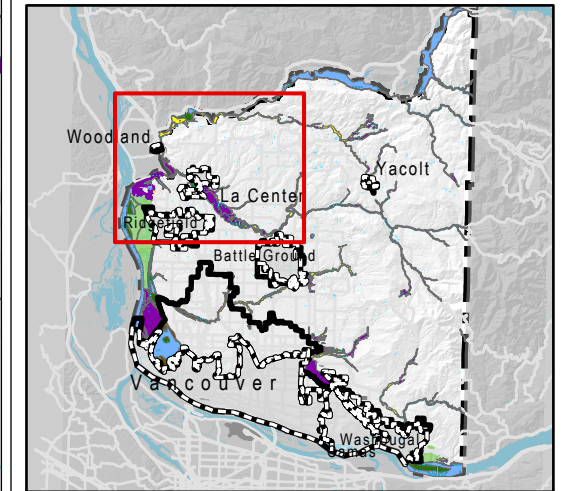
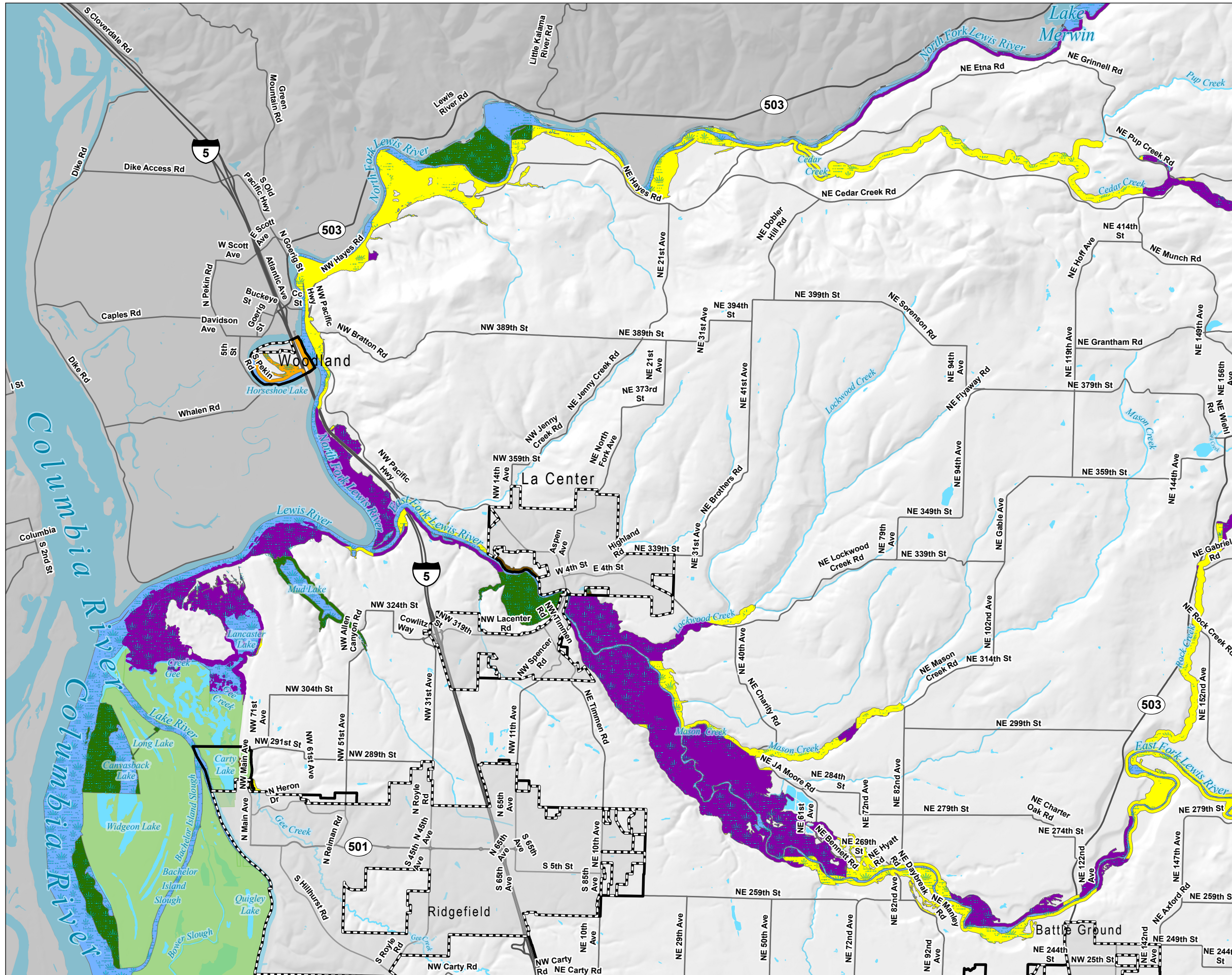
\*Definitive presence will be determined on a project basis  
 \*\*Private development in National Wildlife Refuges are regulated under the Rural Conservancy Residential provisions of the SMP.



**NOTE:** Information shown on this map was collected from several sources. Clark County accepts no responsibility for any inaccuracies that may be present.



**SMP Map B1**  
January 2020 Draft



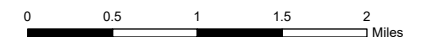
**KEY**

- Associated Wetlands\*
- USFWS National Wildlife Refuges\*\*
- Incorporated Area
- Urban Growth Area
- County Boundary
- Shoreline Designations**
- Aquatic
- High Intensity
- Medium Intensity
- Natural
- Rural Conservancy Residential
- Rural Conservancy Resource Land
- Urban Conservancy

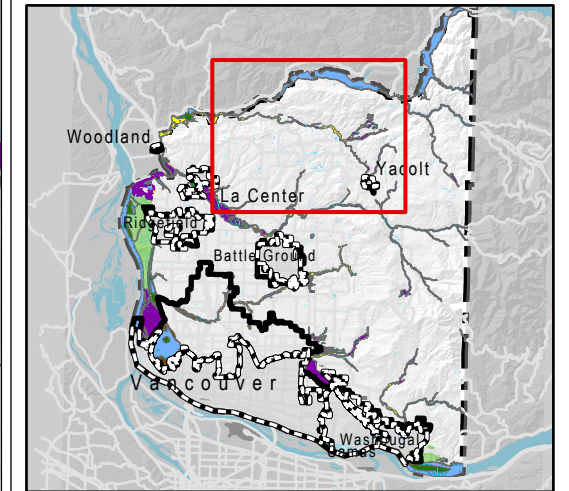
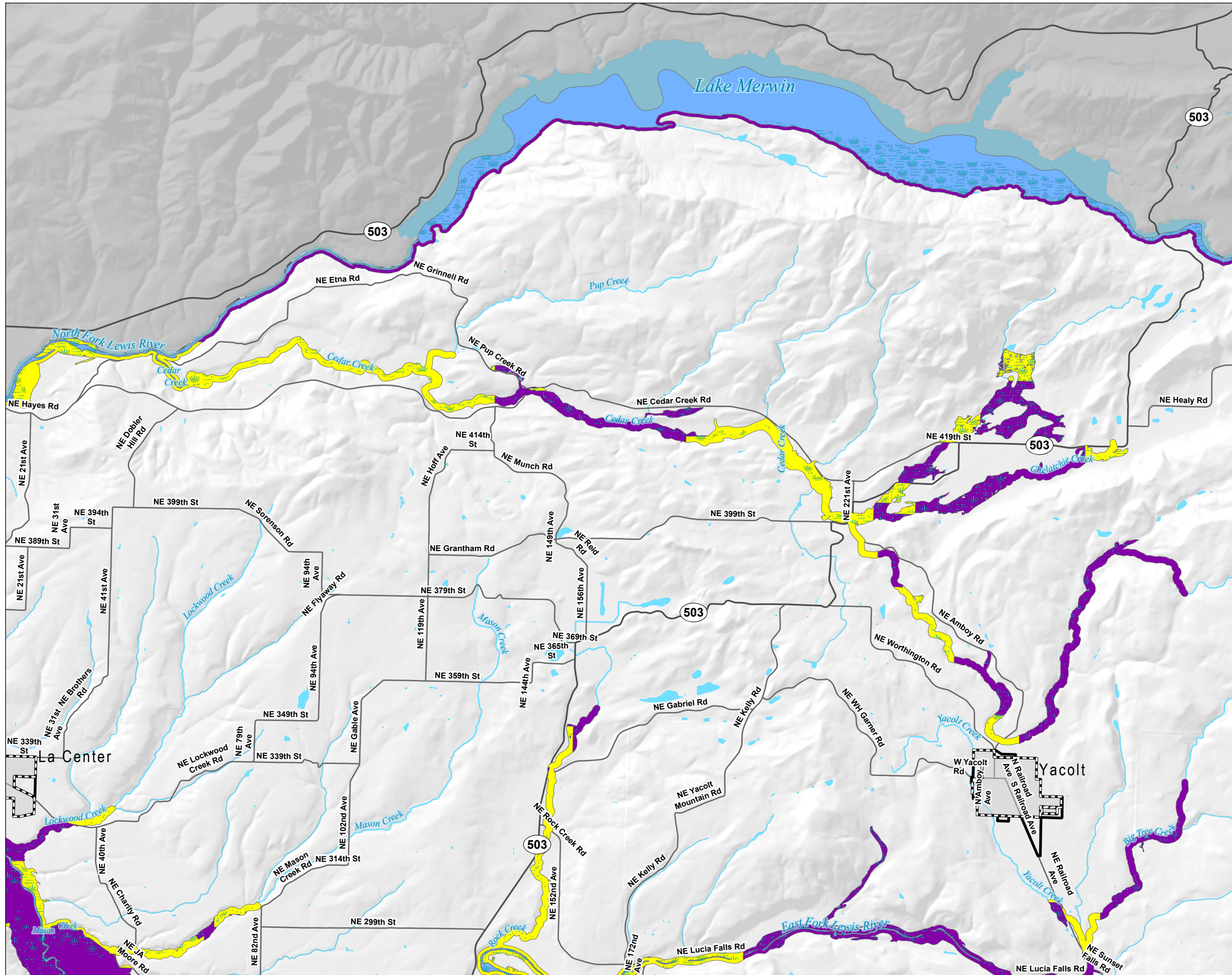
\*Definitive presence will be determined on a project basis  
 \*\*Private development in National Wildlife Refuges are regulated under the Rural Conservancy Residential provisions of the SMP.



**NOTE:** Information shown on this map was collected from several sources. Clark County accepts no responsibility for any inaccuracies that may be present.



**SMP Map B2**  
January 2020 Draft



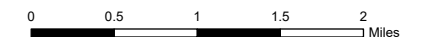
**KEY**

- Associated Wetlands\*
- USFWS National Wildlife Refuges\*\*
- Incorporated Area
- Urban Growth Area
- County Boundary
- Shoreline Designations**
- Aquatic
- High Intensity
- Medium Intensity
- Natural
- Rural Conservancy Residential
- Rural Conservancy Resource Land
- Urban Conservancy

\*Definitive presence will be determined on a project basis  
 \*\*Private development in National Wildlife Refuges are regulated under the Rural Conservancy Residential provisions of the SMP.

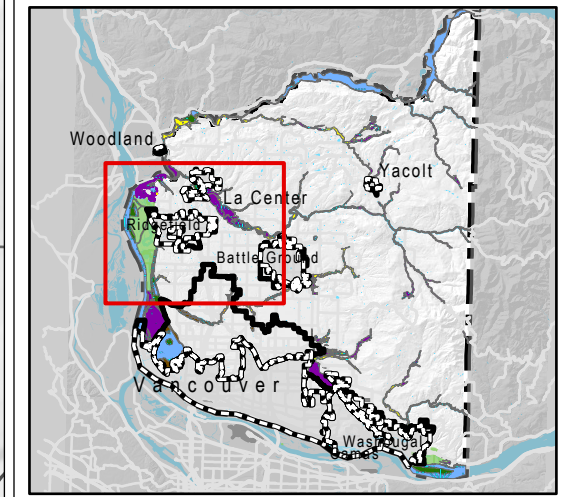
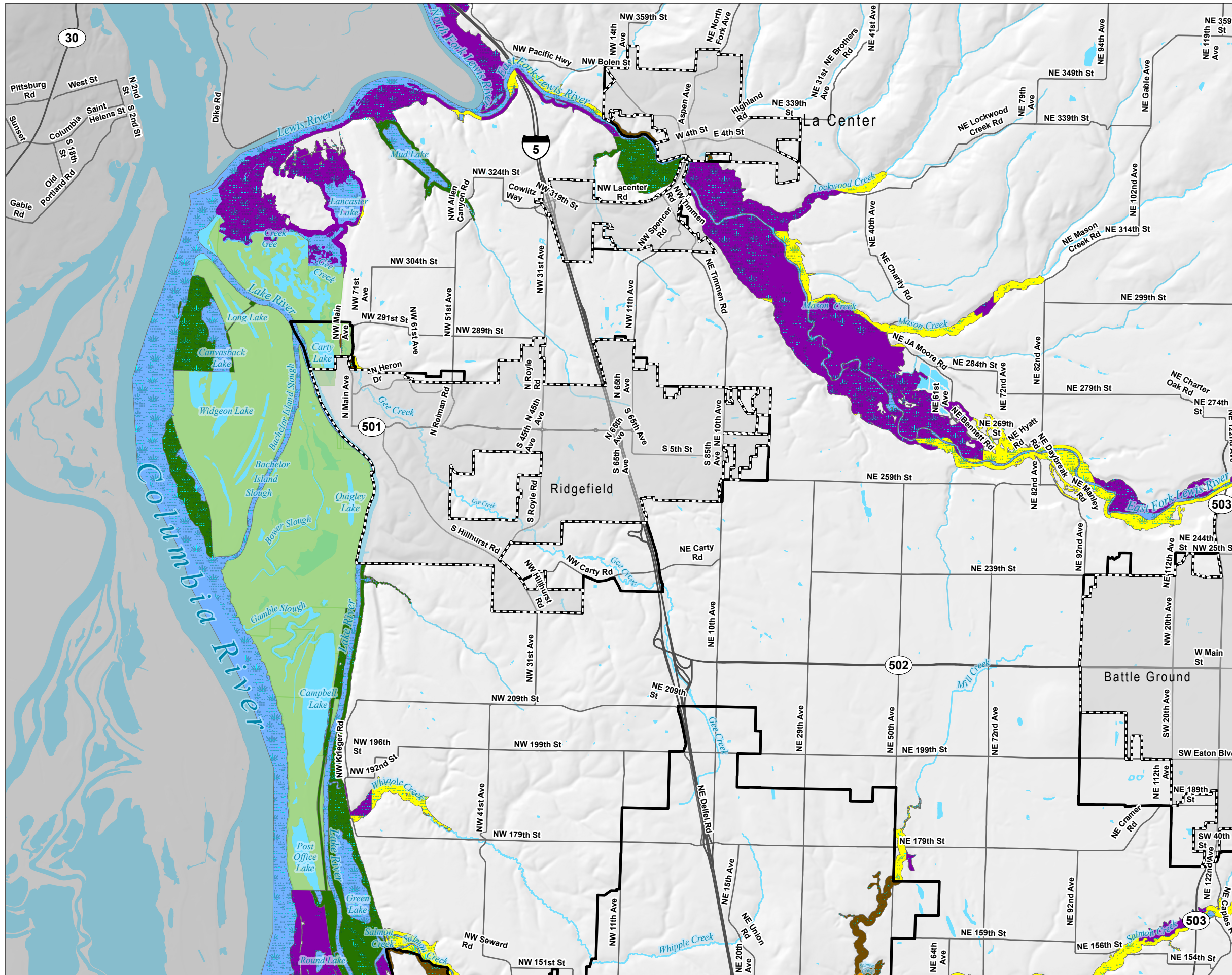


**NOTE:** Information shown on this map was collected from several sources. Clark County accepts no responsibility for any inaccuracies that may be present.



# SMP Map C1

January 2020 Draft



- KEY**
- Associated Wetlands\*
  - USFWS National Wildlife Refuges\*\*
  - Incorporated Area
  - Urban Growth Area
  - County Boundary
- Shoreline Designations**
- Aquatic
  - High Intensity
  - Medium Intensity
  - Natural
  - Rural Conservancy Residential
  - Rural Conservancy Resource Land
  - Urban Conservancy

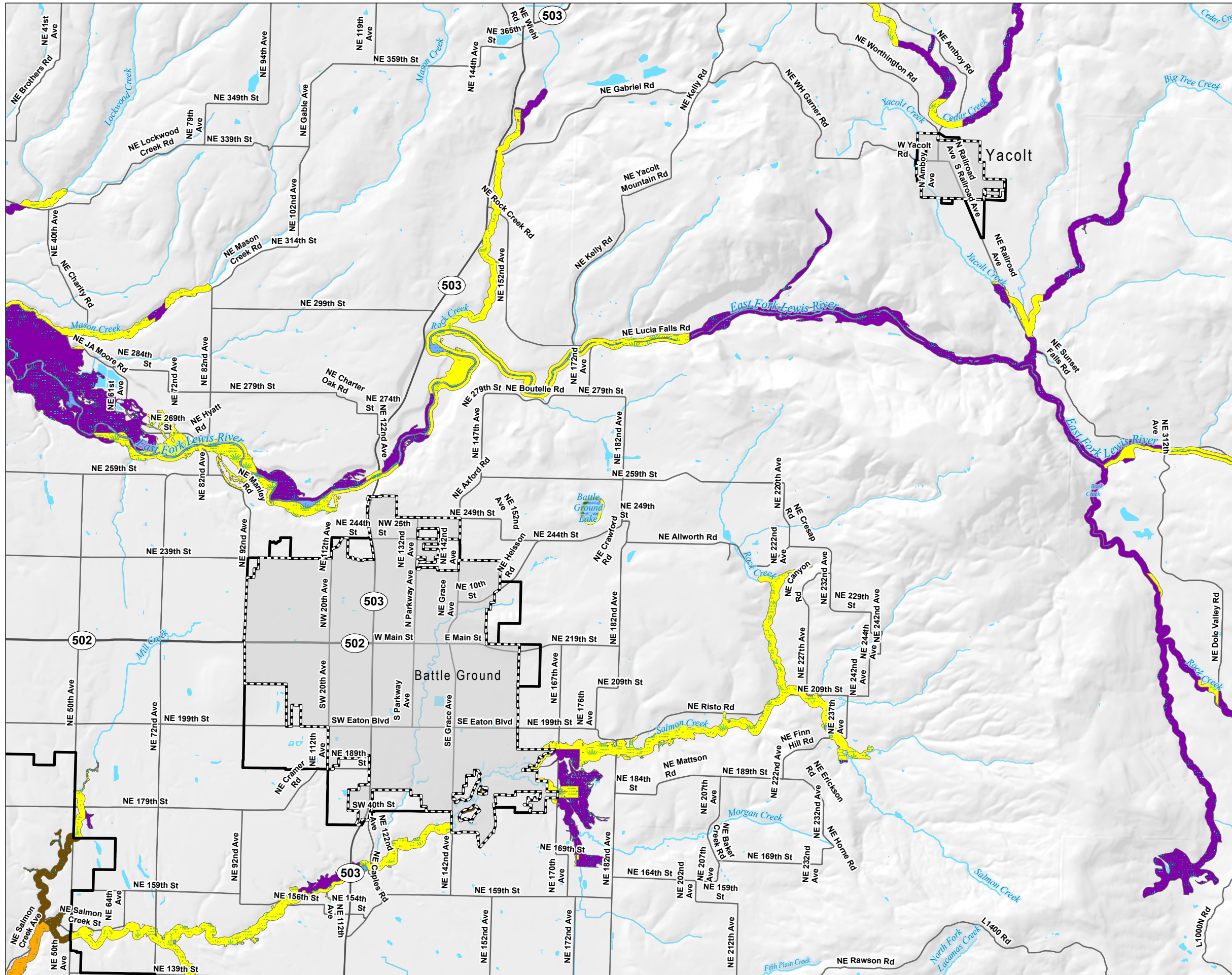
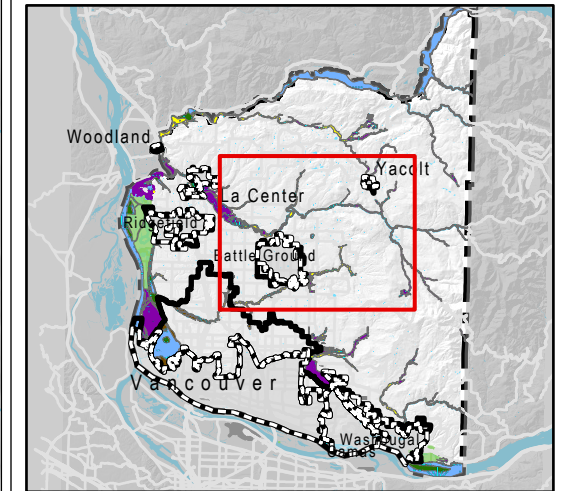
\*Definitive presence will be determined on a project basis  
 \*\*Private development in National Wildlife Refuges are regulated under the Rural Conservancy Residential provisions of the SMP.

**CLARK COUNTY, WASHINGTON**

**NOTE:** Information shown on this map was collected from several sources. Clark County accepts no responsibility for any inaccuracies that may be present.

# SMP Map C2

January 2020 Draft



### KEY

- Associated Wetlands\*
- USFWS National Wildlife Refuges\*\*
- Incorporated Area
- Urban Growth Area
- County Boundary
- Shoreline Designations**
- Aquatic
- High Intensity
- Medium Intensity
- Natural
- Rural Conservancy Residential
- Rural Conservancy Resource Land
- Urban Conservancy

\*Definitive presence will be determined on a project basis  
 \*\*Private development in National Wildlife Refuges are regulated under the Rural Conservancy Residential provisions of the SMP.

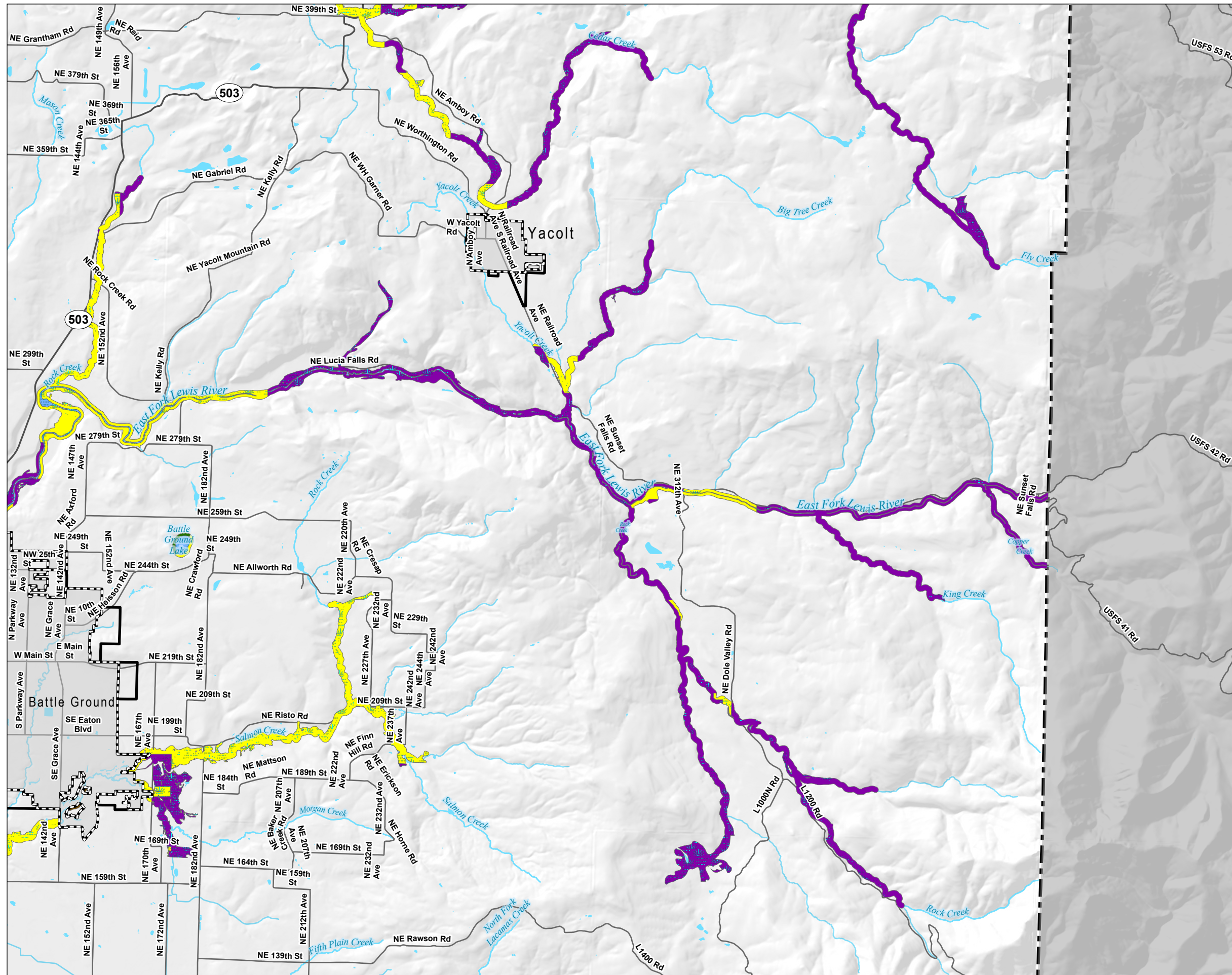
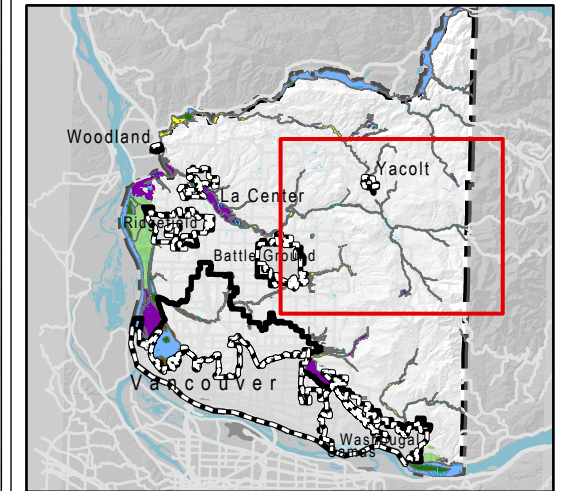


**NOTE:** Information shown on this map was collected from several sources. Clark County accepts no responsibility for any inaccuracies that may be present.



# SMP Map C3

January 2020 Draft



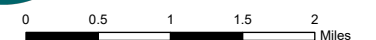
### KEY

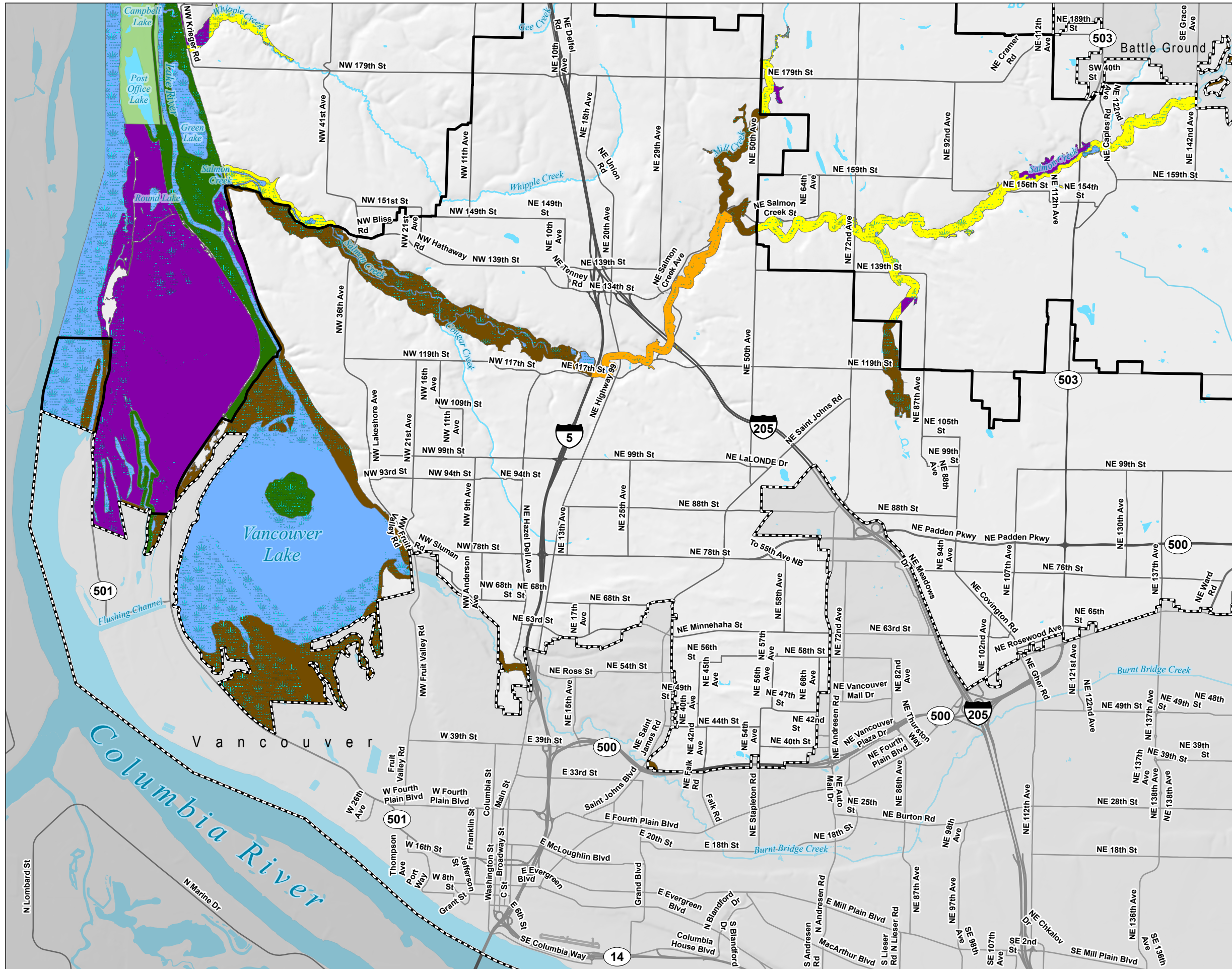
- Associated Wetlands\*
- USFWS National Wildlife Refuges\*\*
- Incorporated Area
- Urban Growth Area
- County Boundary
- Shoreline Designations**
- Aquatic
- High Intensity
- Medium Intensity
- Natural
- Rural Conservancy Residential
- Rural Conservancy Resource Land
- Urban Conservancy

\*Definitive presence will be determined on a project basis  
 \*\*Private development in National Wildlife Refuges are regulated under the Rural Conservancy Residential provisions of the SMP.

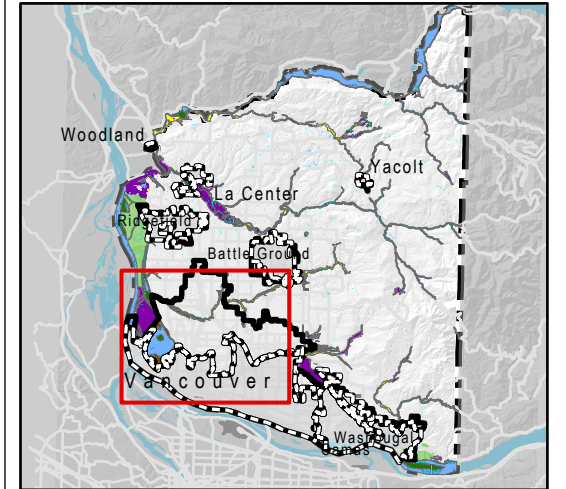


**NOTE:** Information shown on this map was collected from several sources. Clark County accepts no responsibility for any inaccuracies that may be present.





**SMP Map D1**  
January 2020 Draft



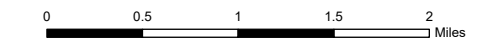
**KEY**

- Associated Wetlands\*
- USFWS National Wildlife Refuges\*\*
- Incorporated Area
- Urban Growth Area
- County Boundary
- Shoreline Designations**
- Aquatic
- High Intensity
- Medium Intensity
- Natural
- Rural Conservancy Residential
- Rural Conservancy Resource Land
- Urban Conservancy

\*Definitive presence will be determined on a project basis  
 \*\*Private development in National Wildlife Refuges are regulated under the Rural Conservancy Residential provisions of the SMP.

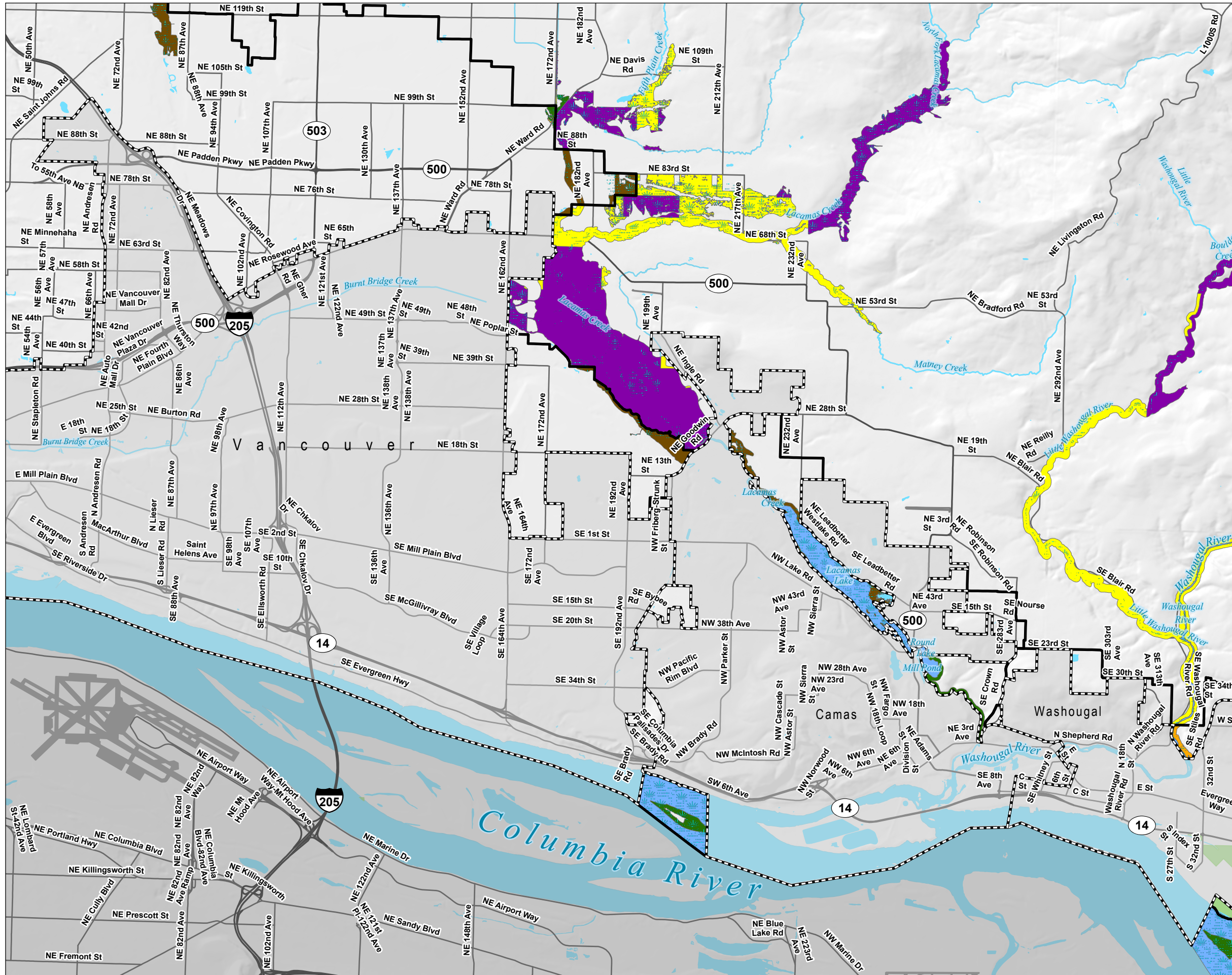
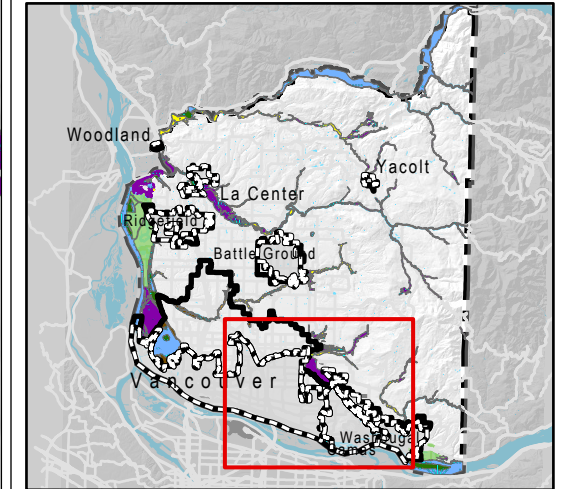


**NOTE:** Information shown on this map was collected from several sources. Clark County accepts no responsibility for any inaccuracies that may be present.



# SMP Map D2

January 2020 Draft



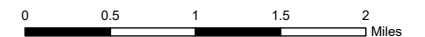
### KEY

- Associated Wetlands\*
- USFWS National Wildlife Refuges\*\*
- Incorporated Area
- Urban Growth Area
- County Boundary
- Shoreline Designations**
- Aquatic
- High Intensity
- Medium Intensity
- Natural
- Rural Conservancy Residential
- Rural Conservancy Resource Land
- Urban Conservancy

\*Definitive presence will be determined on a project basis  
 \*\*Private development in National Wildlife Refuges are regulated under the Rural Conservancy Residential provisions of the SMP.



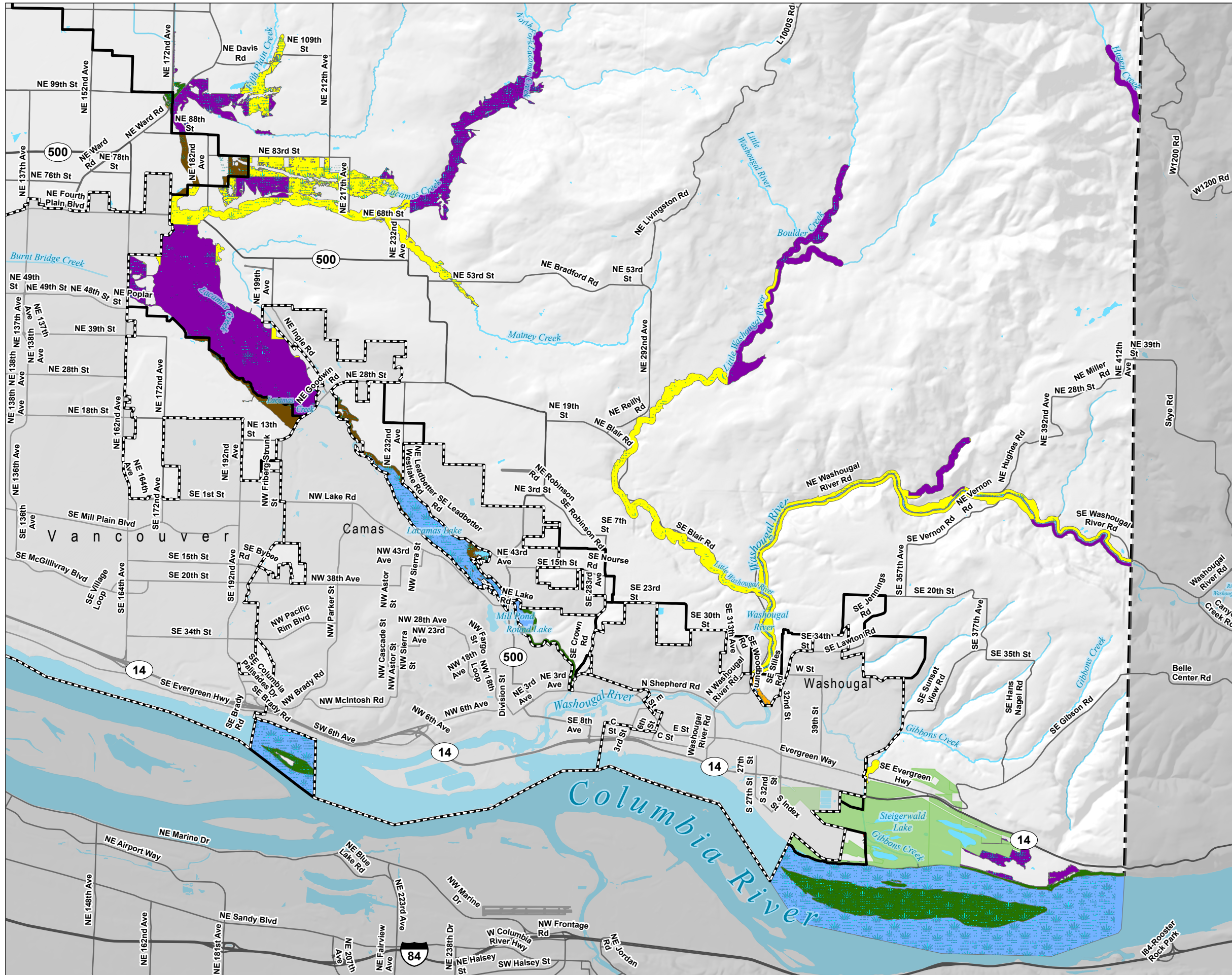
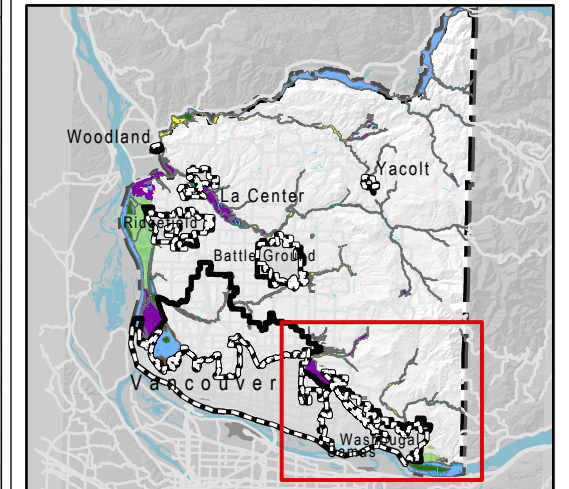
**NOTE:** Information shown on this map was collected from several sources. Clark County accepts no responsibility for any inaccuracies that may be present.





# SMP Map D3

January 2020 Draft



### KEY

- Associated Wetlands\*
- USFWS National Wildlife Refuges\*\*
- Incorporated Area
- Urban Growth Area
- County Boundary
- Shoreline Designations**
- Aquatic
- High Intensity
- Medium Intensity
- Natural
- Rural Conservancy Residential
- Rural Conservancy Resource Land
- Urban Conservancy

\*Definitive presence will be determined on a project basis  
 \*\*Private development in National Wildlife Refuges are regulated under the Rural Conservancy Residential provisions of the SMP.



**NOTE:** Information shown on this map was collected from several sources. Clark County accepts no responsibility for any inaccuracies that may be present.

