

# Proposed Changes to Shoreline Map

January 2020 Draft

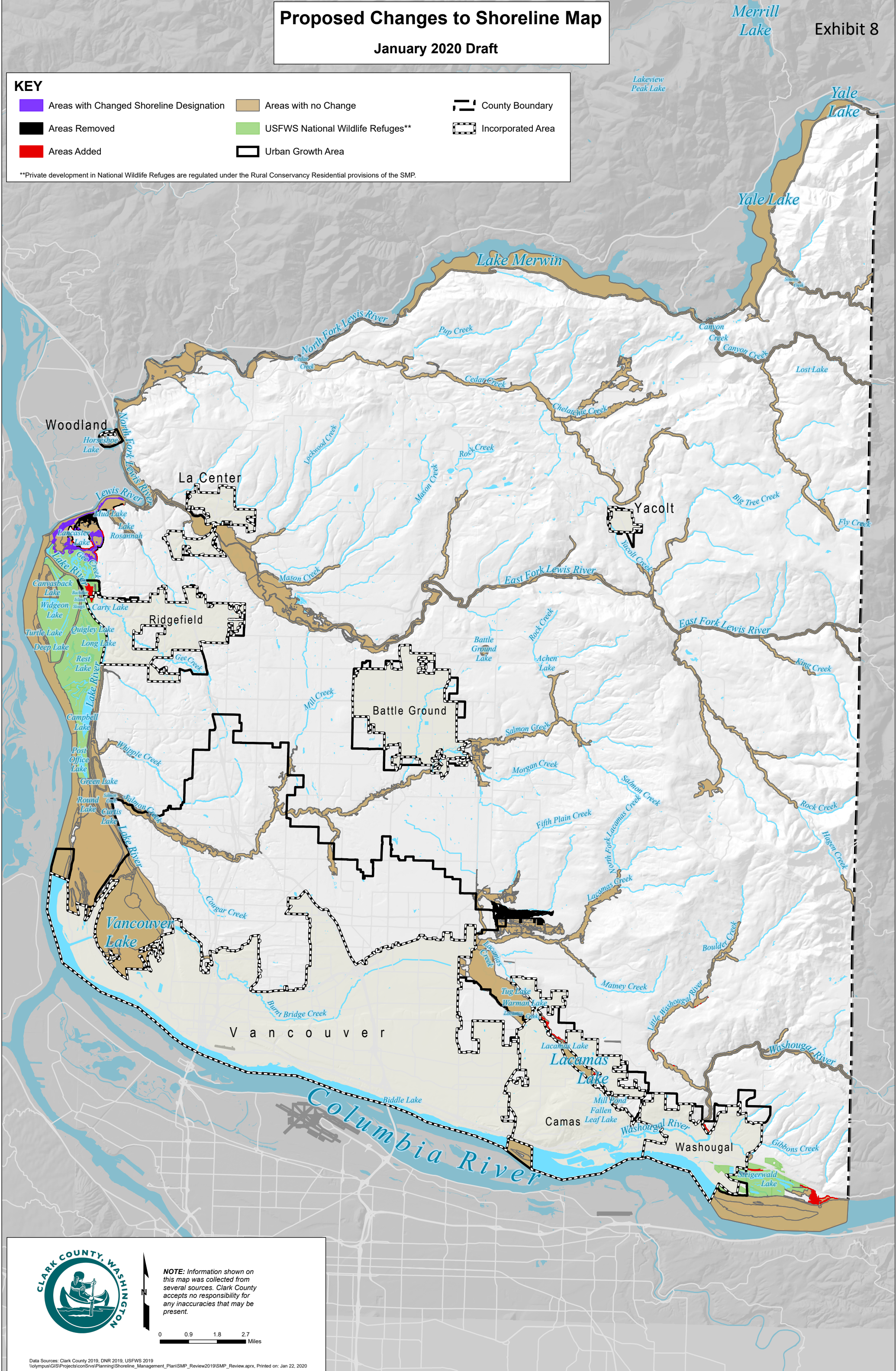
Merrill Lake

Exhibit 8

## KEY

- Areas with Changed Shoreline Designation
- Areas Removed
- Areas Added
- Areas with no Change
- USFWS National Wildlife Refuges\*\*
- Urban Growth Area
- County Boundary
- Incorporated Area

\*\*Private development in National Wildlife Refuges are regulated under the Rural Conservancy Residential provisions of the SMP.



**NOTE:** Information shown on this map was collected from several sources. Clark County accepts no responsibility for any inaccuracies that may be present.

0 0.9 1.8 2.7 Miles