

How this event works

- Presentation and discussion at 6pm
- Before/after presentation, view posters and talk to staff
- Provide feedback on comment form
- Drop off your comment form as you leave



Shoreline Master Program Periodic Review 2020

September 25, 2019

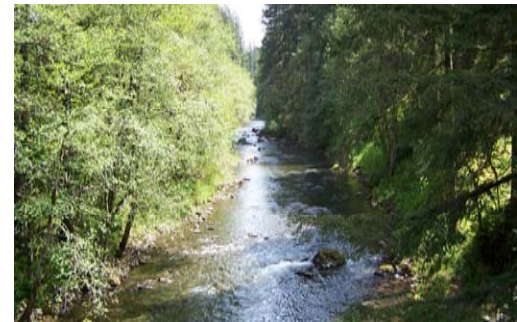
Open House
Dollar's Corner Fire & Rescue Station

Jenna Kay, Project Manager
Community Planning



Presentation

- Project overview
- Shoreline background
 - What is a Shoreline Master Program?
 - Where does it apply?
 - What is “no net loss”?
- Program data & updates
- Next steps
- Discussion

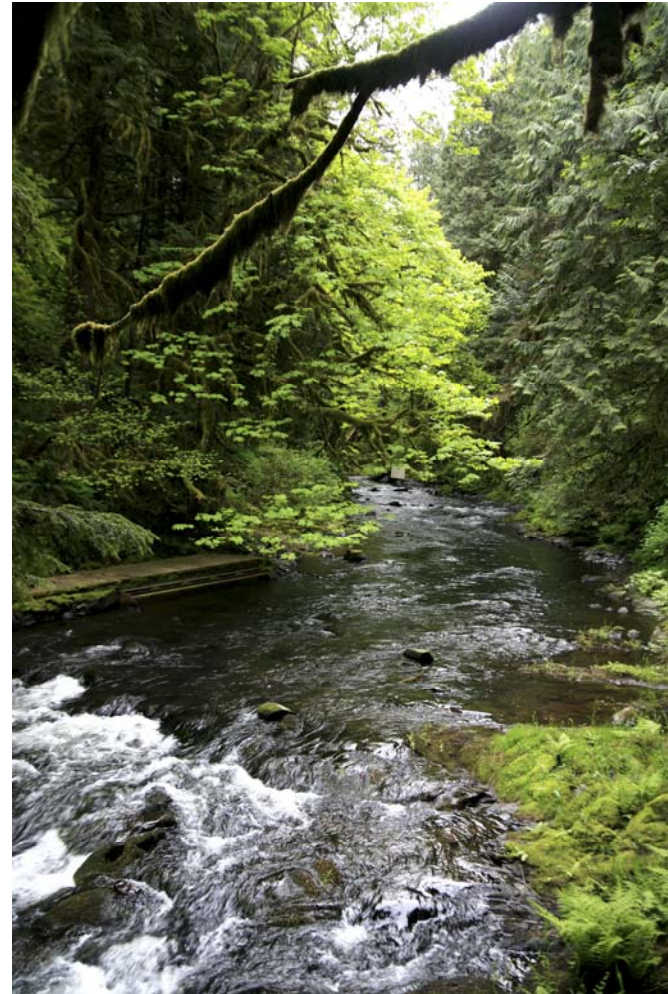


Project Overview



What is a Periodic Review?

- State mandated
- Review and revise, if necessary
- NOT a major update like 2012



What is a Periodic Review?

Ensure the Shoreline Master Program (SMP) is:

- Current with changes in laws and rules
- Consistent with other Clark County plans and regulations
- Responsive to changed circumstances, new information and improved data

Due: June 30, 2020



Background

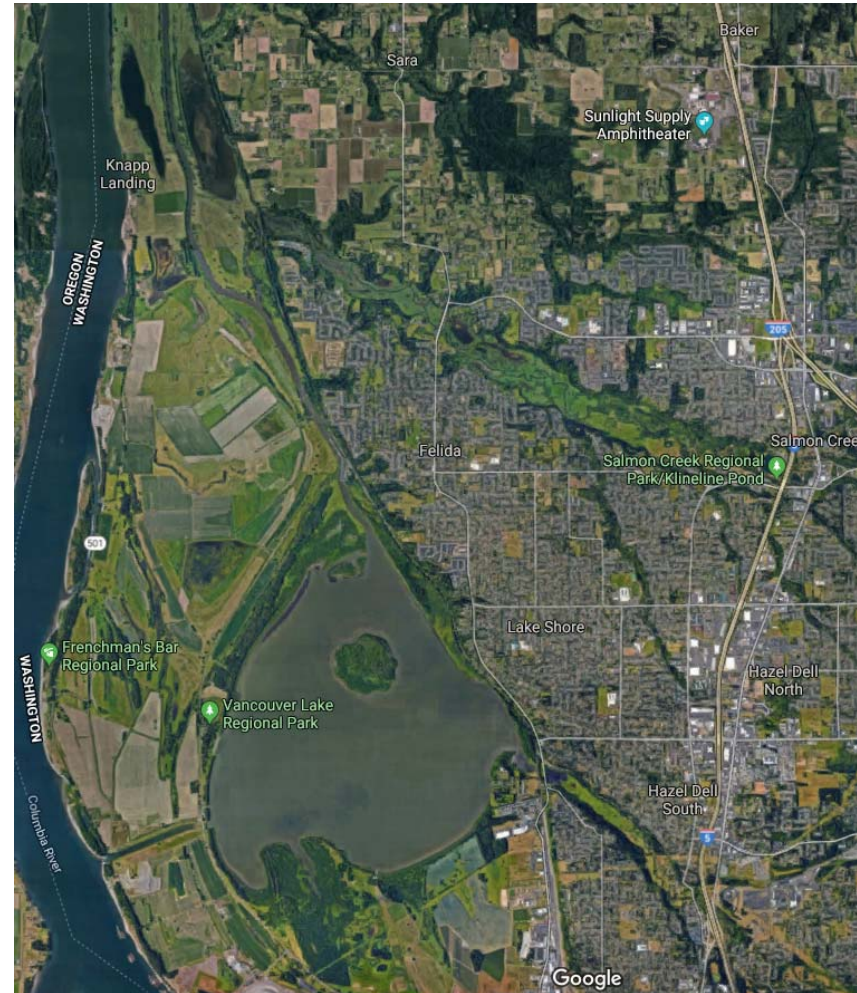


Why is there a Shoreline Master Program (SMP)?

Intent of the Shoreline Management Act

“...prevent the inherent harm in an uncoordinated and piecemeal development of the state’s shorelines.”

RCW 90.58.020



What is a Shoreline Master Program (SMP)?

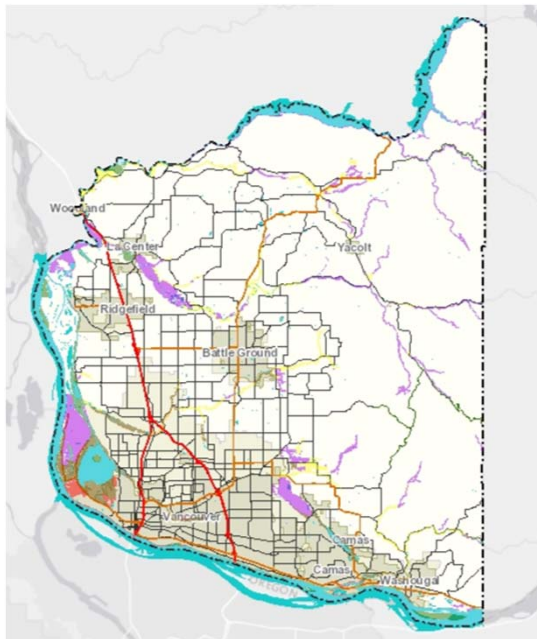
Policy Goals

- Foster reasonable and appropriate uses
- Protect natural resources
- Promote public access



What is a Shoreline Master Program (SMP)?

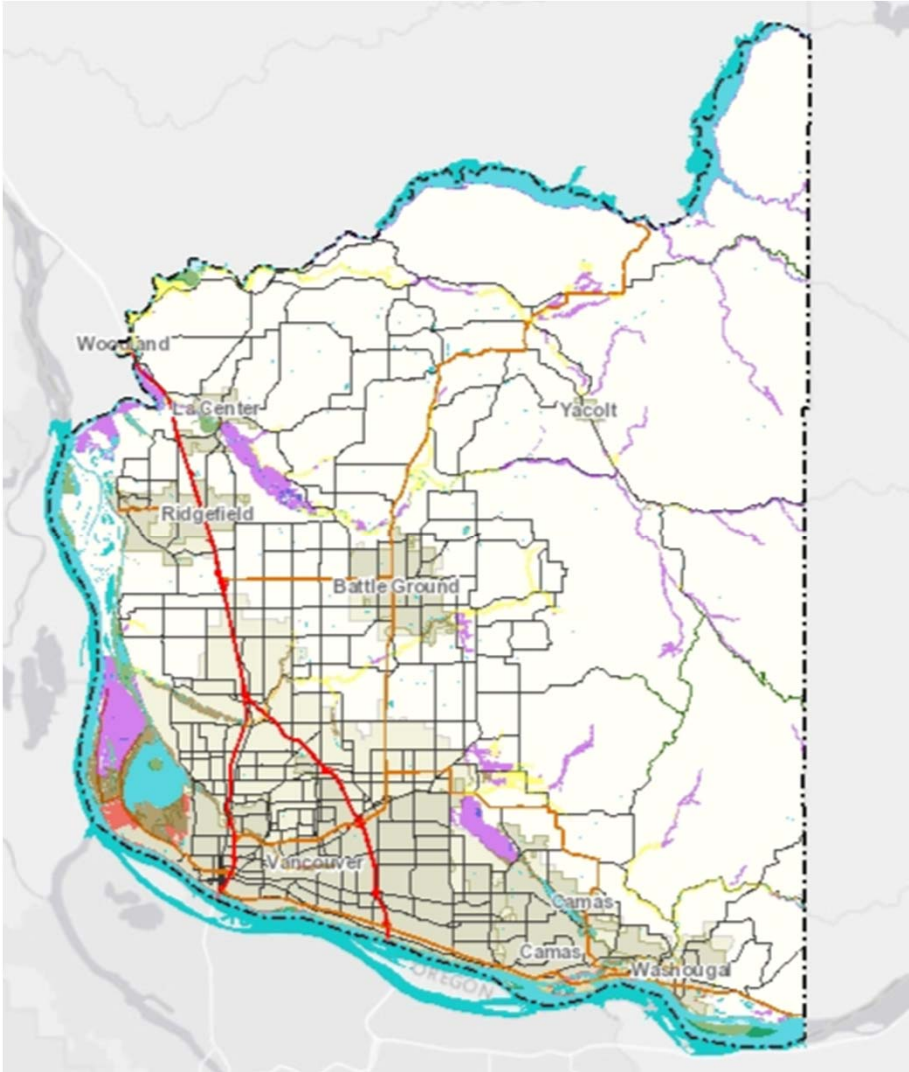
- Policies: Comprehensive Plan, Ch. 13
- Regulations: CCC 40.460
- Map



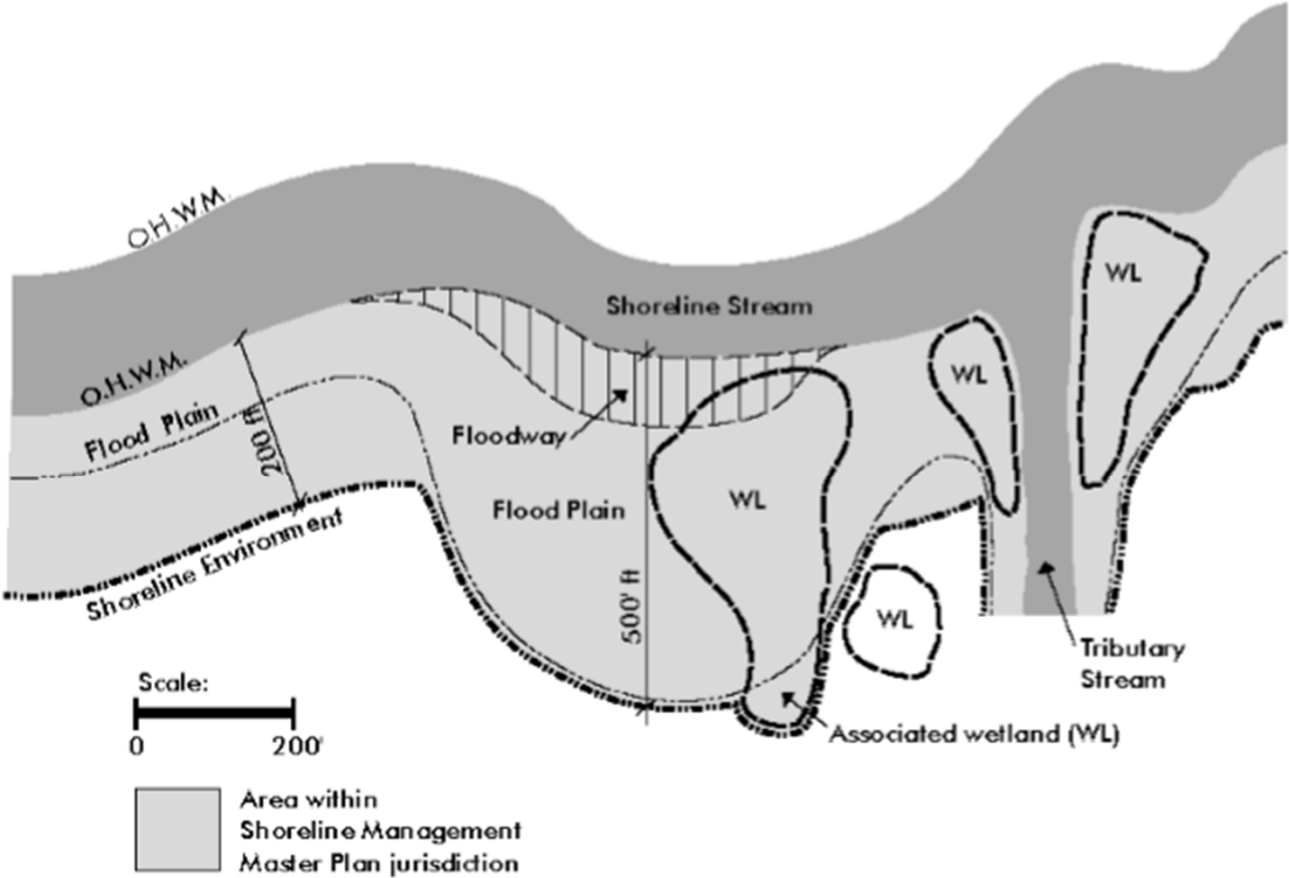
20 | Comprehensive Growth
YEAR | Management Plan
2015-2035



Where does the SMP apply?



Where does the SMP Apply?



What activities/uses are regulated by the SMP?

Definition of development includes:

- New or expanded structures
- Land development/alteration
- Restoration
- Trail Construction

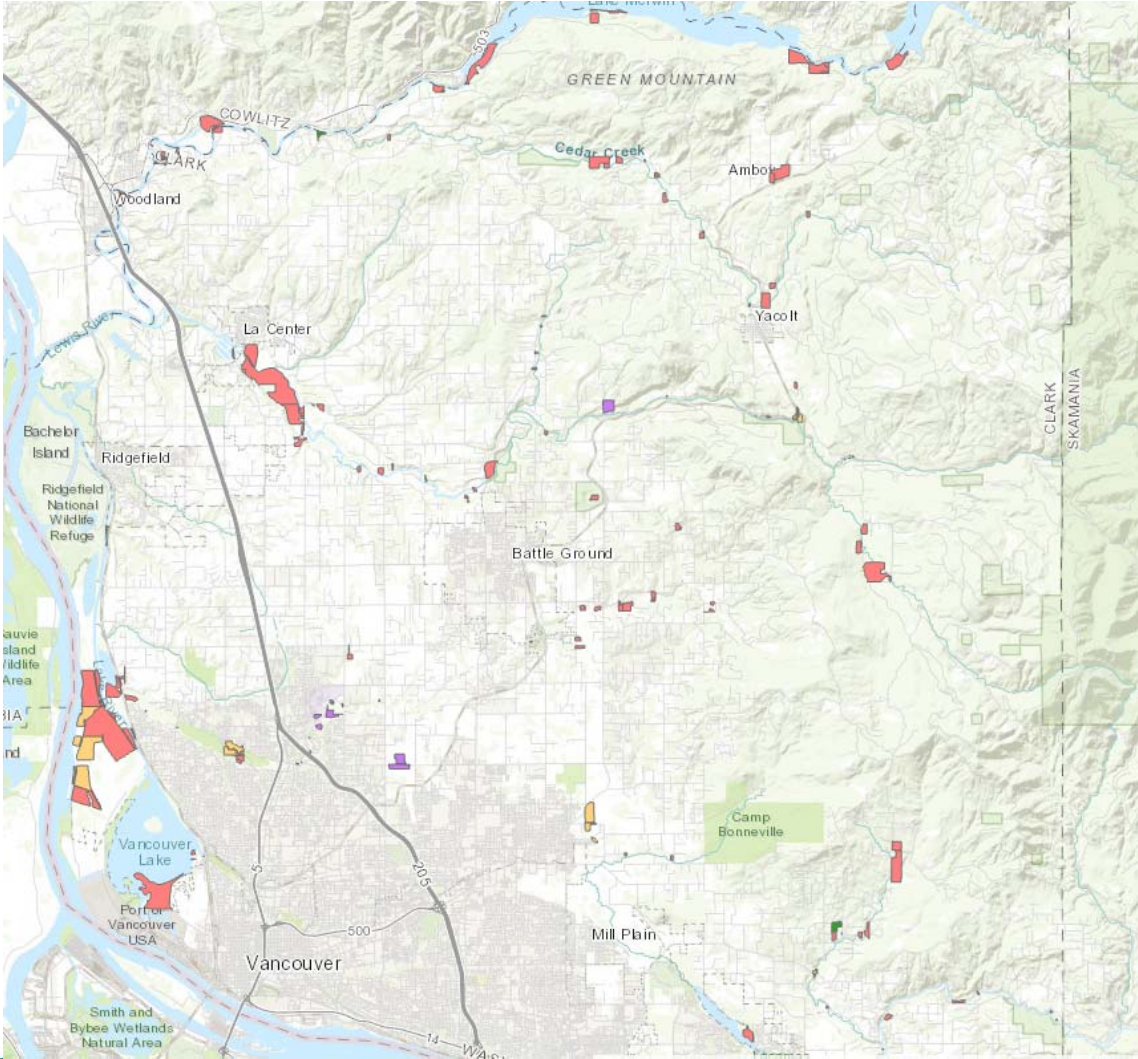


Program Data



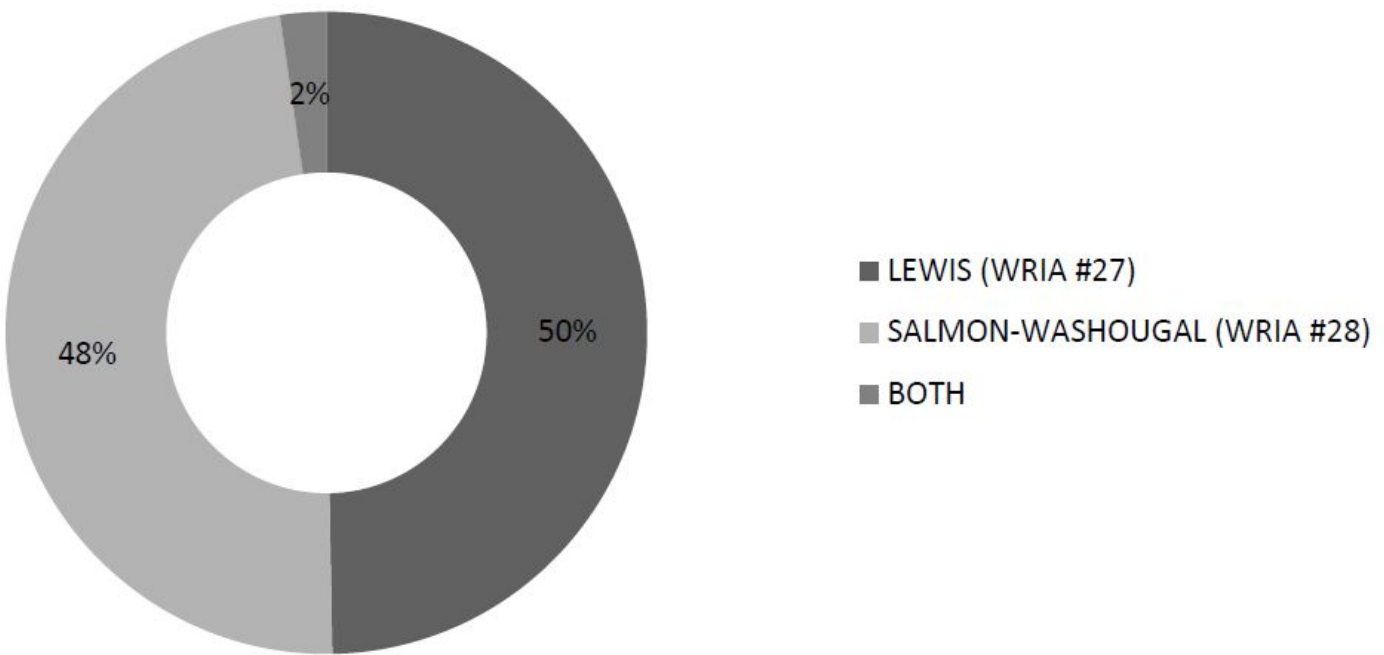
Program Updates

6 years data, 173 projects

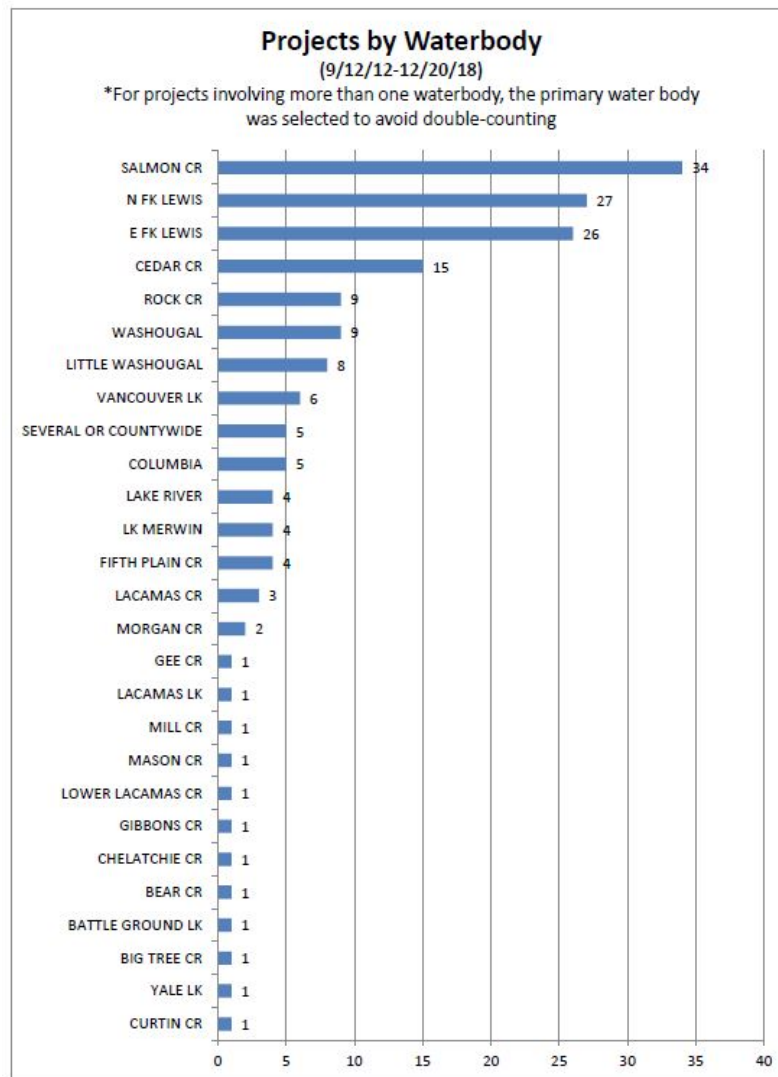


Program Updates

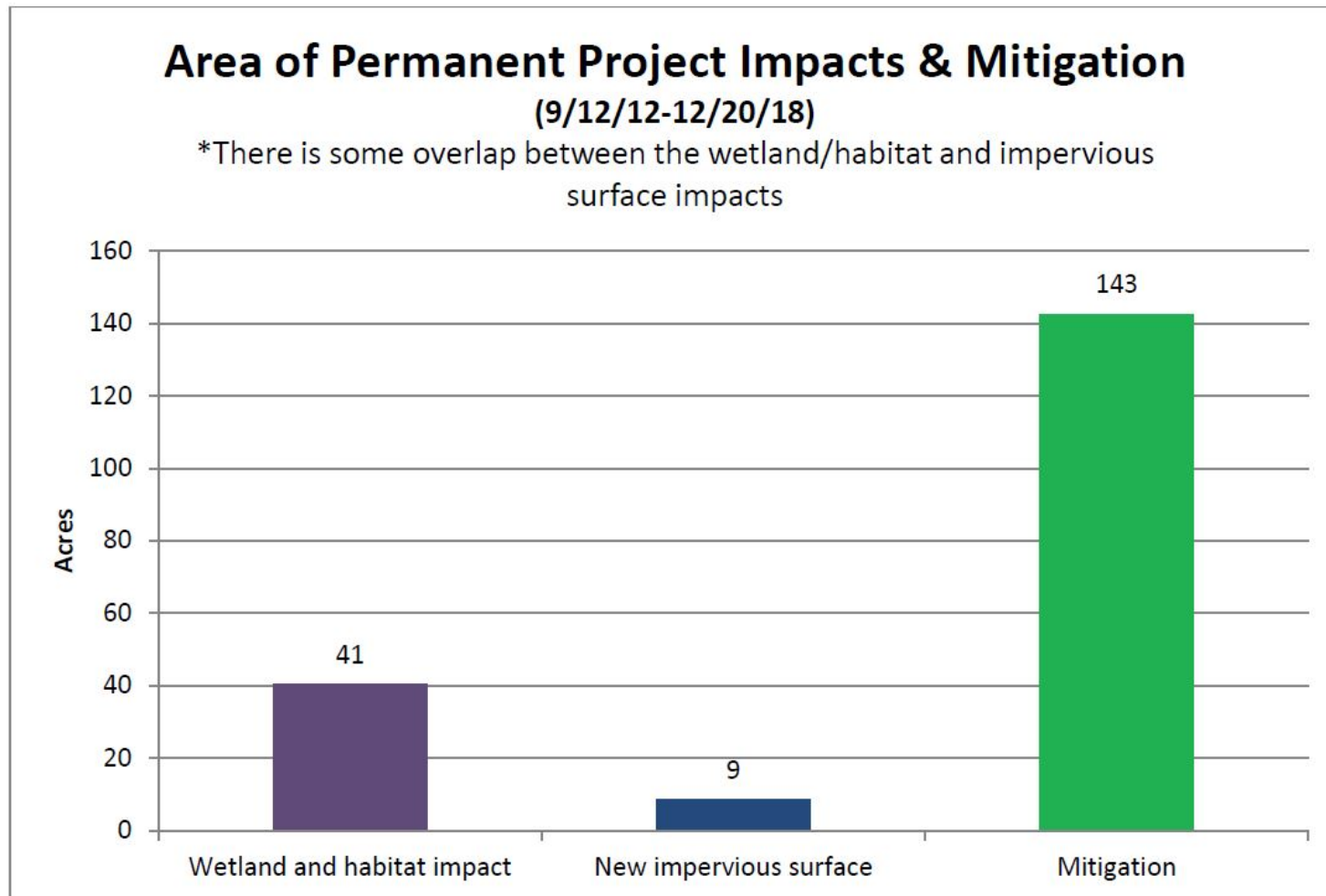
Projects by Watershed Basin (WRIA)
(9/12/12-12/20/18)



Program Updates



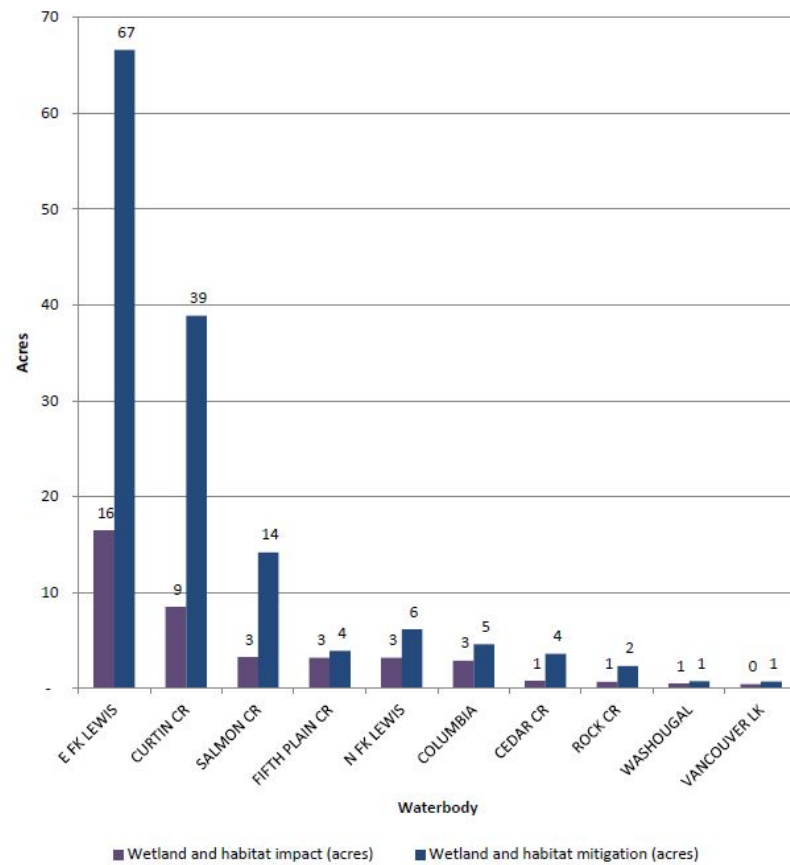
Program Updates



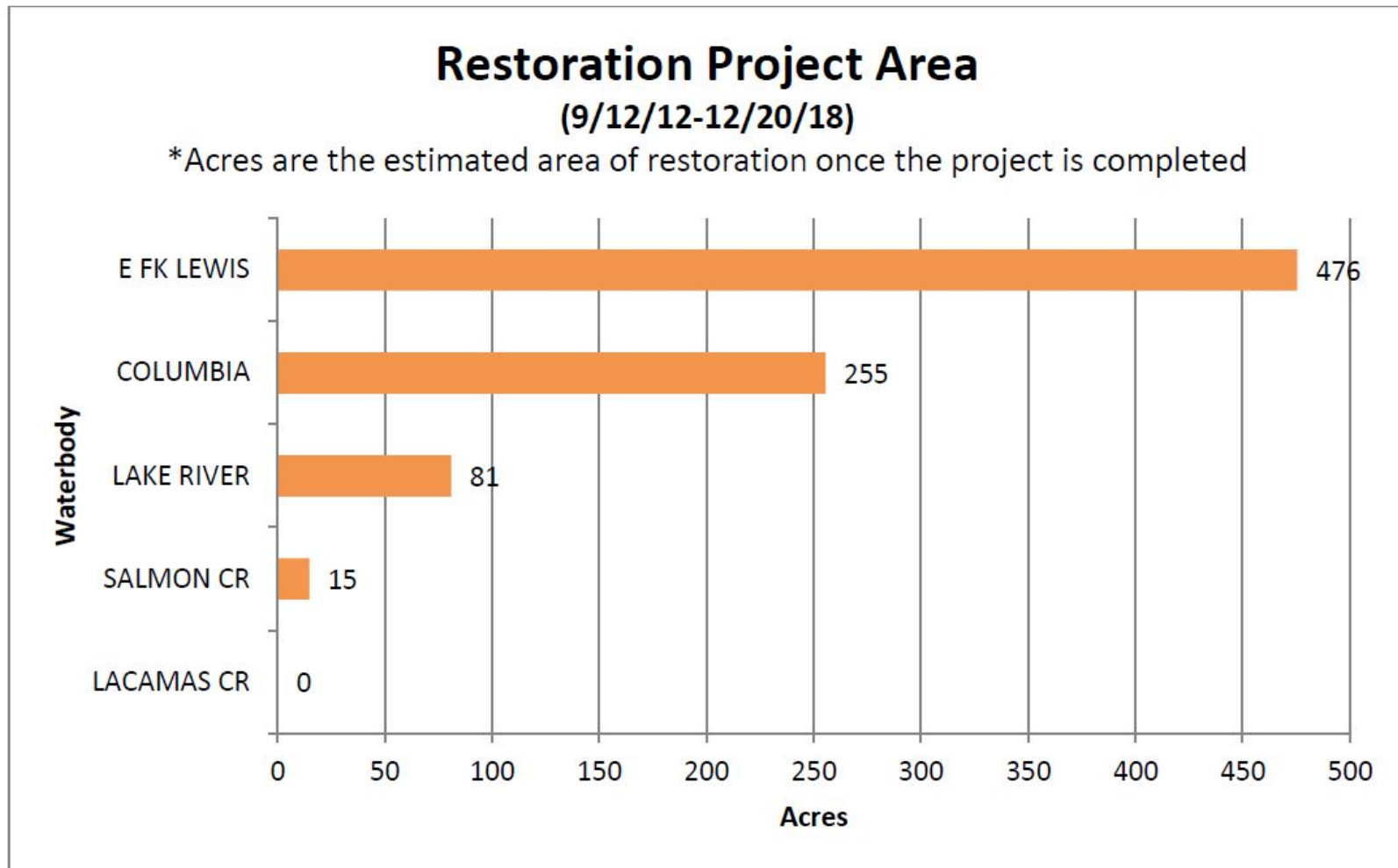
Program Updates

**Area of Permanent Project Impacts & Mitigation
by Waterbody
(9/12/12-12/20/18)**

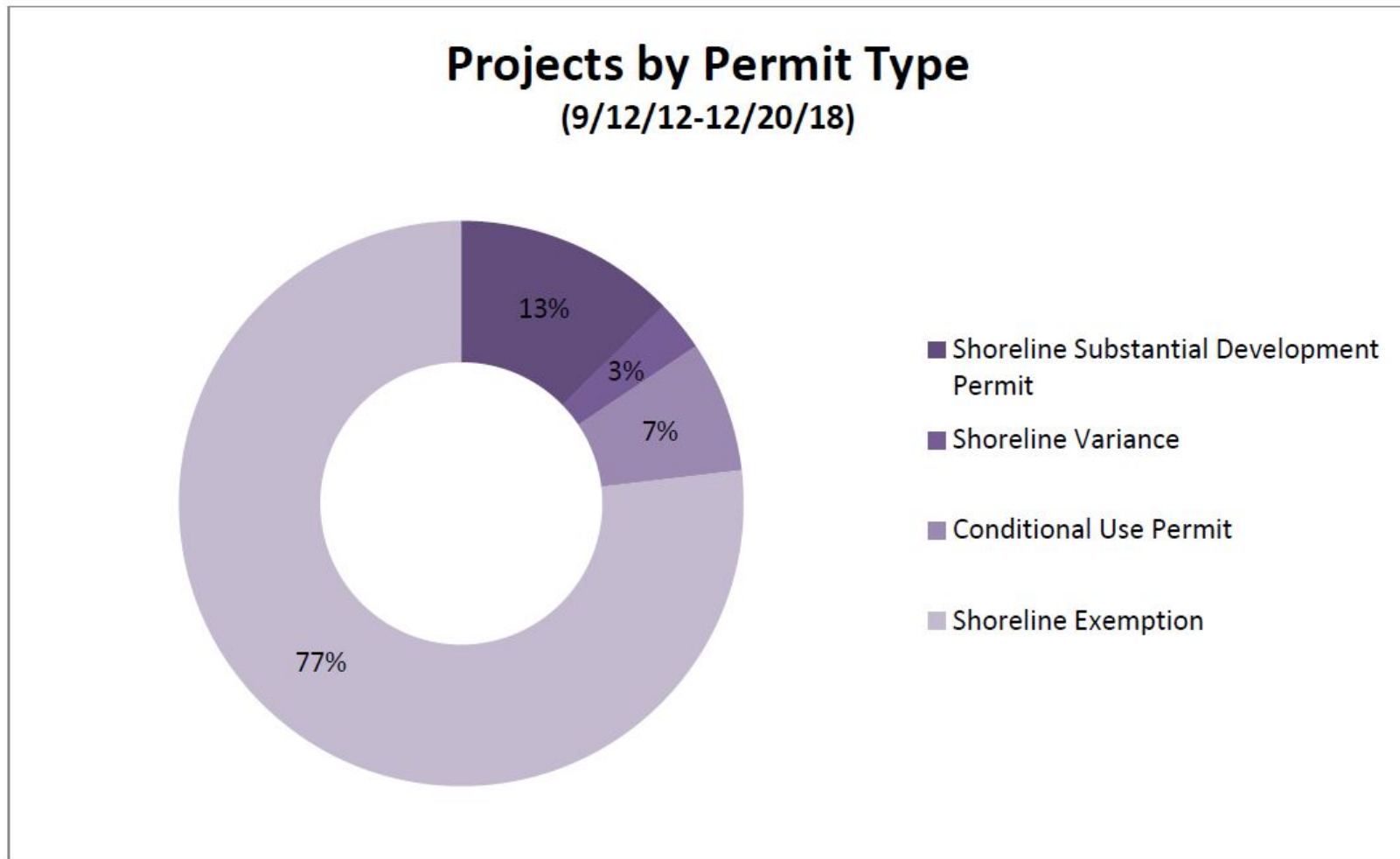
*The ten waterbodies with the largest area of development impacts are shown below



Program Updates



Program Updates



Project Timeline

Sep-Oct 2019

Learn about the project

Nov-Dec 2019

Review & provide feedback on draft proposals

Early 2020

Submit comments: public comment period, SEPA

Spring 2020

Testify at Planning Commission Hearing

Late Spring 2020

Testify at County Council Hearing



How to Stay Involved

1. Provide feedback
2. Check the website
3. Sign-up for project updates
4. Contact staff



Thank you!

Project website: <https://www.clark.wa.gov/smp2020>

Sign-up for project updates: <https://www.clark.wa.gov/community-planning/get-project-updates>

Project contact: Jenna Kay, jenna.kay@clark.wa.gov, 564.397.4968

