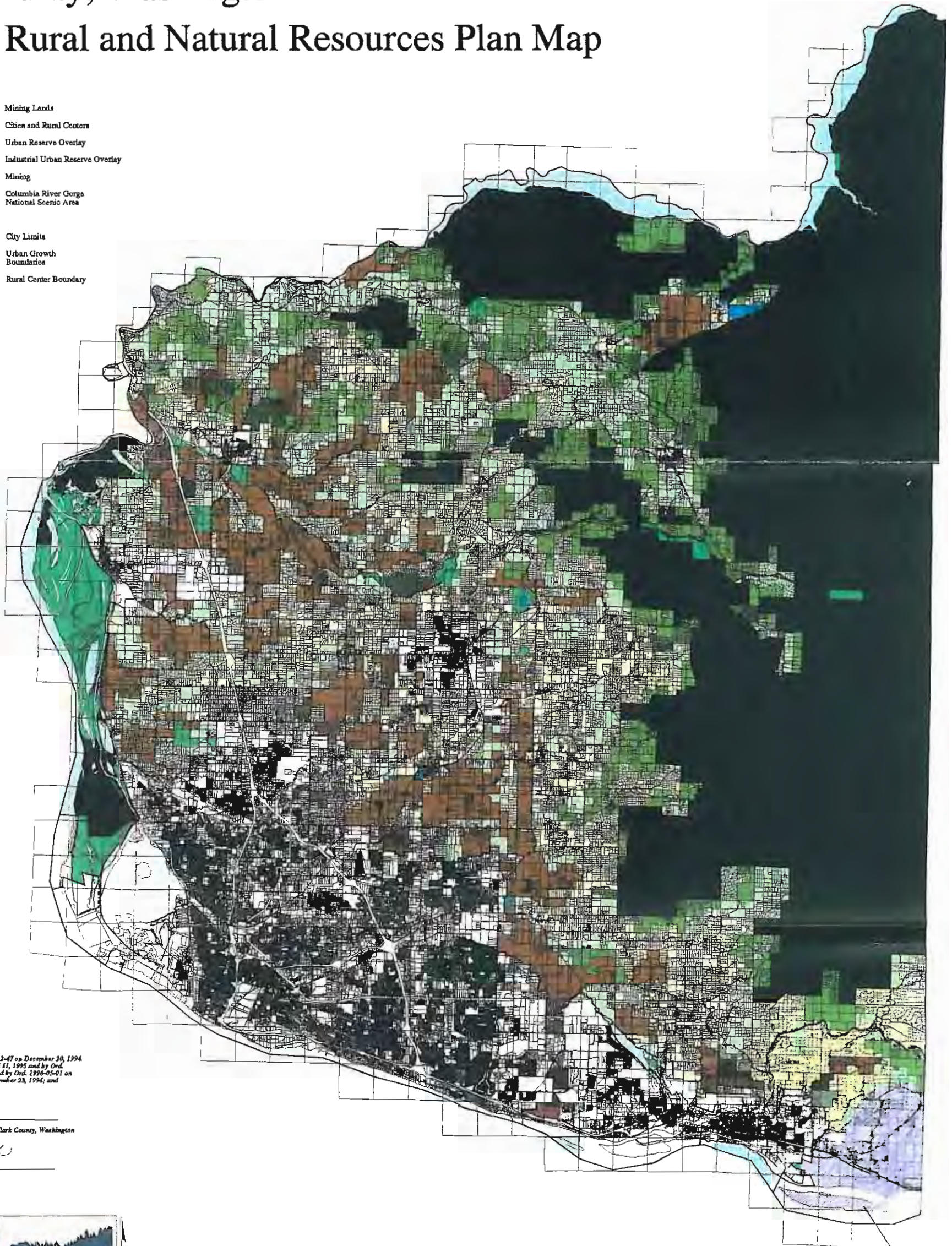


Clark County, Washington 20-year Rural and Natural Resources Plan Map

- | | |
|----------------------------|---|
| ■ Rural Commercial | ■ Mining Lands |
| ■ Rural Industrial | ■ Cities and Rural Centers |
| ■ Public Facility | ■ Urban Reserve Overlay |
| ■ Parks / Open Space | ■ Industrial Urban Reserve Overlay |
| ■ Urban Reserve | ■ Mining |
| ■ Industrial Urban Reserve | ■ Columbia River Gorge National Scenic Area |
| ■ Rural Estate | |
| ■ Forest Tier I | ▲ City Limits |
| ■ Forest Tier II | ▲ Urban Growth Boundaries |
| ■ Agriculture | ▲ Rural Center Boundary |
| ■ Agri-Forest | |
| ■ Agriculture-Wildlife | |



Adopted by Ordinance Number 1994-12-47 on December 30, 1994
 Corrected by Ord. 1995-04-16 on April 11, 1995 and by Ord.
 1995-05-49 on May 30, 1995. Amended by Ord. 1996-05-01 on
 May 4, 1996; Ord. 1996-12-64 on December 23, 1996; and
 Ord. 1997-05-31 on May 27, 1997

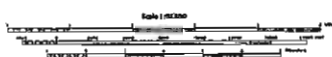
Mal Gordon, Chair
 Board of County Commissioners for Clark County, Washington

AMAC: *Louis Richards*

Clerk to the Board



Department of Assessment and GIS



See separate map for zoning within the
 Columbia River Gorge National Scenic Area