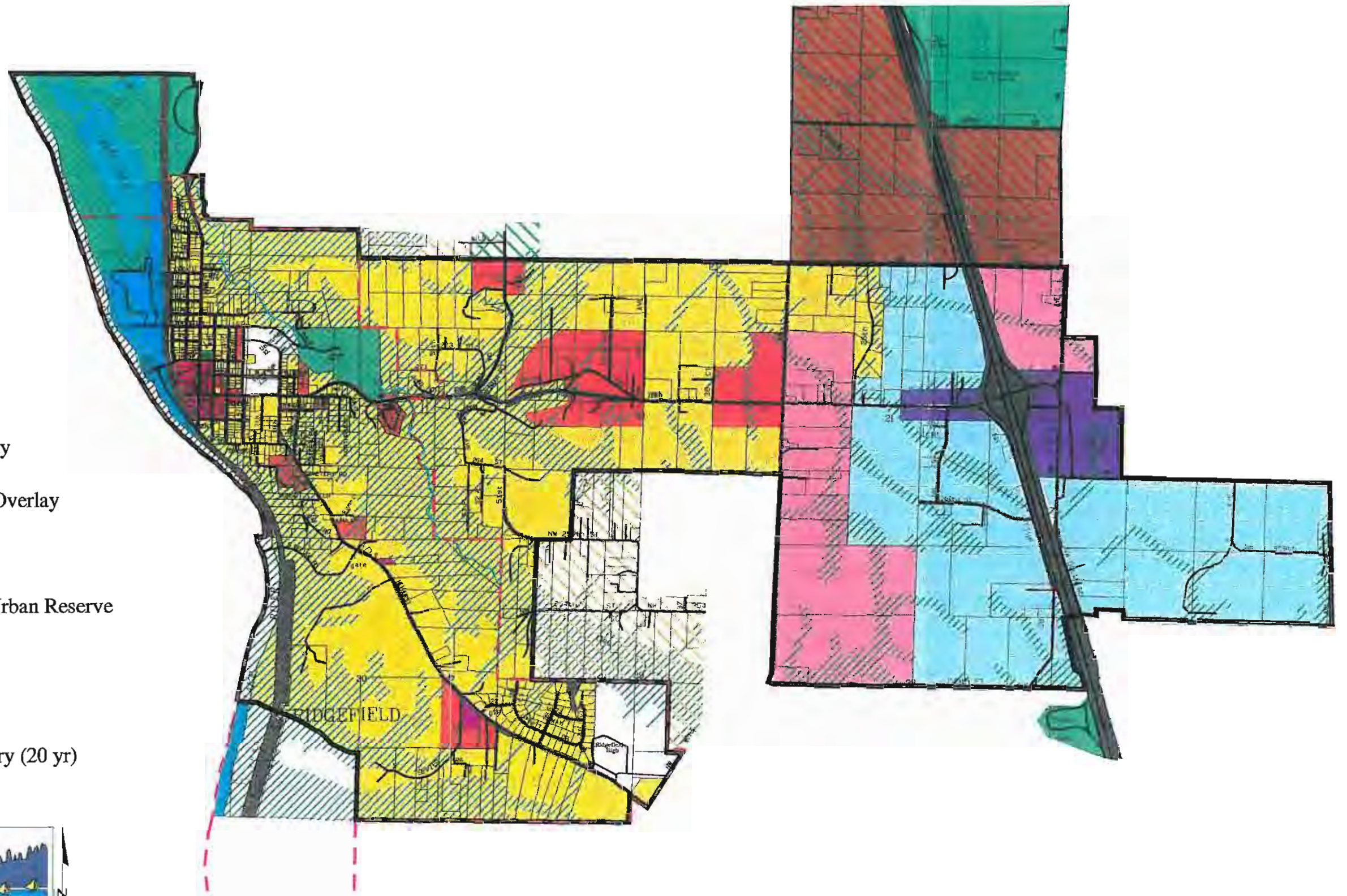


PLAN LEGEND

- URBAN RESIDENTIAL
 - Low Density Residential
 - Medium Density Residential
- URBAN EMPLOYMENT
 - Planned Commercial
 - Master Planned Business Park
 - Industrial Park
 - Neighborhood Commercial
- URBAN MIXED USE
 - Water Front Mixed Use
 - Downtown Mixed Use
- URBAN PUBLIC
 - Public Parks, Wildlife Refuge & Golf Course
 - Public Facility
 - Public & Railroad Right of Way
- Open Space/Density Transfer Overlay
- URBAN RESERVE
 - Residential-Urban Reserve
 - Medium Density Residential-Urban Reserve
 - Industrial-Urban Reserve
 - Rural Estate - 5
 - Agriculture - 20
- Urban Growth Area Boundary (20 yr)
- City Limits

Ridgefield Urban Growth Area Comprehensive Plan Map



Department of Assessment and GIS
Plotted: December 19, 1997

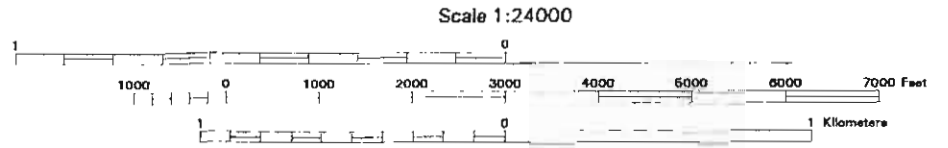


FIGURE 12