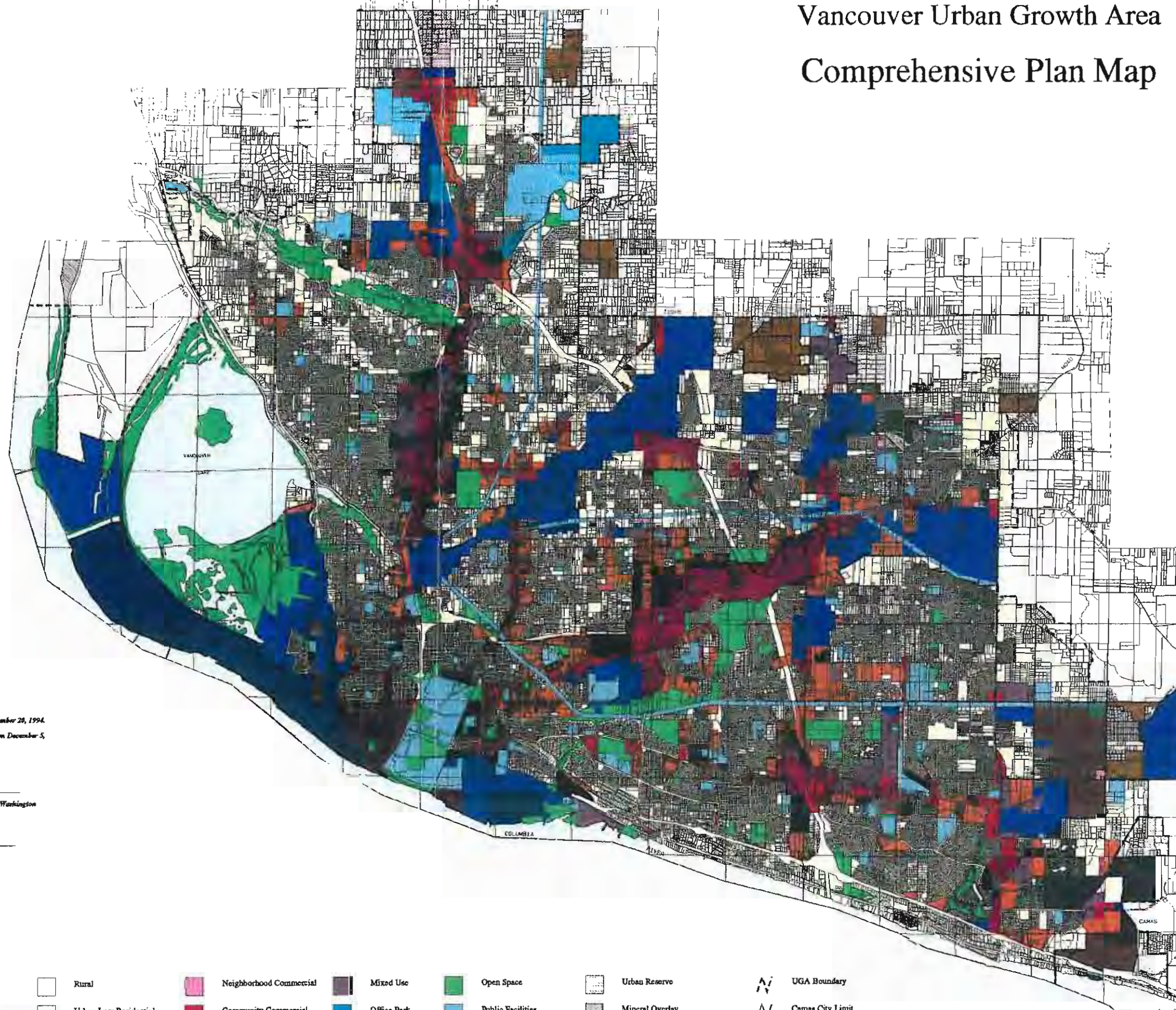


Vancouver Urban Growth Area Comprehensive Plan Map



Adopted by Ordinance Number 1994-12-47 on December 20, 1994.
 Corrected by Ord. 1995-04-16 on April 11, 1995;
 Ord. 1995-05-49 on May 30, 1995; Ord. 1995-12-04 on December 5,
 1995; Ord. 1996-02-04 on February 6, 1996; and by
 Ord. 1997-05-31 on May 27, 1997.

Mel Gordon
 Mel Gordon, Chair
 Board of County Commissioners for Clark County, Washington
 Attest:

Clark H. [Signature]
 Clark H. [Signature]

Updated by Vancouver City Ord. M-3190, M-3214 and M-3225



- | | | | | | |
|--------------------------|-------------------------|------------------|-----------------------|----------------------------------|------------------|
| Rural | Neighborhood Commercial | Mixed Use | Open Space | Urban Reserve | UGA Boundary |
| Urban Low Residential | Community Commercial | Office Park | Public Facilities | Mineral Overlay | Camas City Limit |
| Urban Medium Residential | General Commercial | Light Industrial | BPA R-of-Way/Easement | Urban Reserve overlay | |
| Urban High Residential | City Center | Heavy Industrial | Water | Industrial Urban Reserve overlay | |

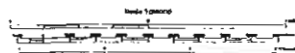


FIGURE 14