

**CLARK COUNTY
STAFF REPORT**

DEPARTMENT: Community Development
DATE: July 24, 2014
REQUEST: Approve and sign the revised final plat for the Victoria's View subdivision
CHECK ONE: Consent CAO

BACKGROUND: Transmitted for acceptance by the Board is an amended plat (PLD2014-00010/FLD2013-00015).

The Victoria's View final plat (FLD2013-00015) was recorded on October 8, 2013. That plat shows a 34-foot wide private street tract ending in a cul-de-sac (NW 126th Circle), with a separate public sidewalk easement outside of the 34-foot wide street tract on the south side. The public sidewalk easement was supposed to be placed inside the street tract.

The amended plat which correctly shows the public sidewalk easement inside the street tract was reviewed and approved by staff under the preliminary plat alteration application PLD2014-00010. The amended plat is identical to the original plat in all ways except for the location of the public sidewalk easement. Per legal staff's direction, it is intended to record the amended plat under the same book and page as the original.

COMMUNITY OUTREACH: The preliminary plat alteration received the standard land use review and approval process. Notice of application was mailed to the applicant, neighborhood association and property owners within 300 feet of the site on May 6, 2014. No comments were received in response to the notice.

BUDGET AND POLICY IMPLICATIONS: N/A

FISCAL IMPACTS

Yes (see attached form) No

ACTION REQUESTED: It is recommended the Board approve the corrected plat.

PROJECT START DATE: NA

DISTRIBUTION: Please forward a copy of the approved staff report to Community Development.



Marty Snell
Community Development Director

Approved: 

CLARK COUNTY
BOARD OF COMMISSIONERS

Aug. 5, 2014
SR 171-14

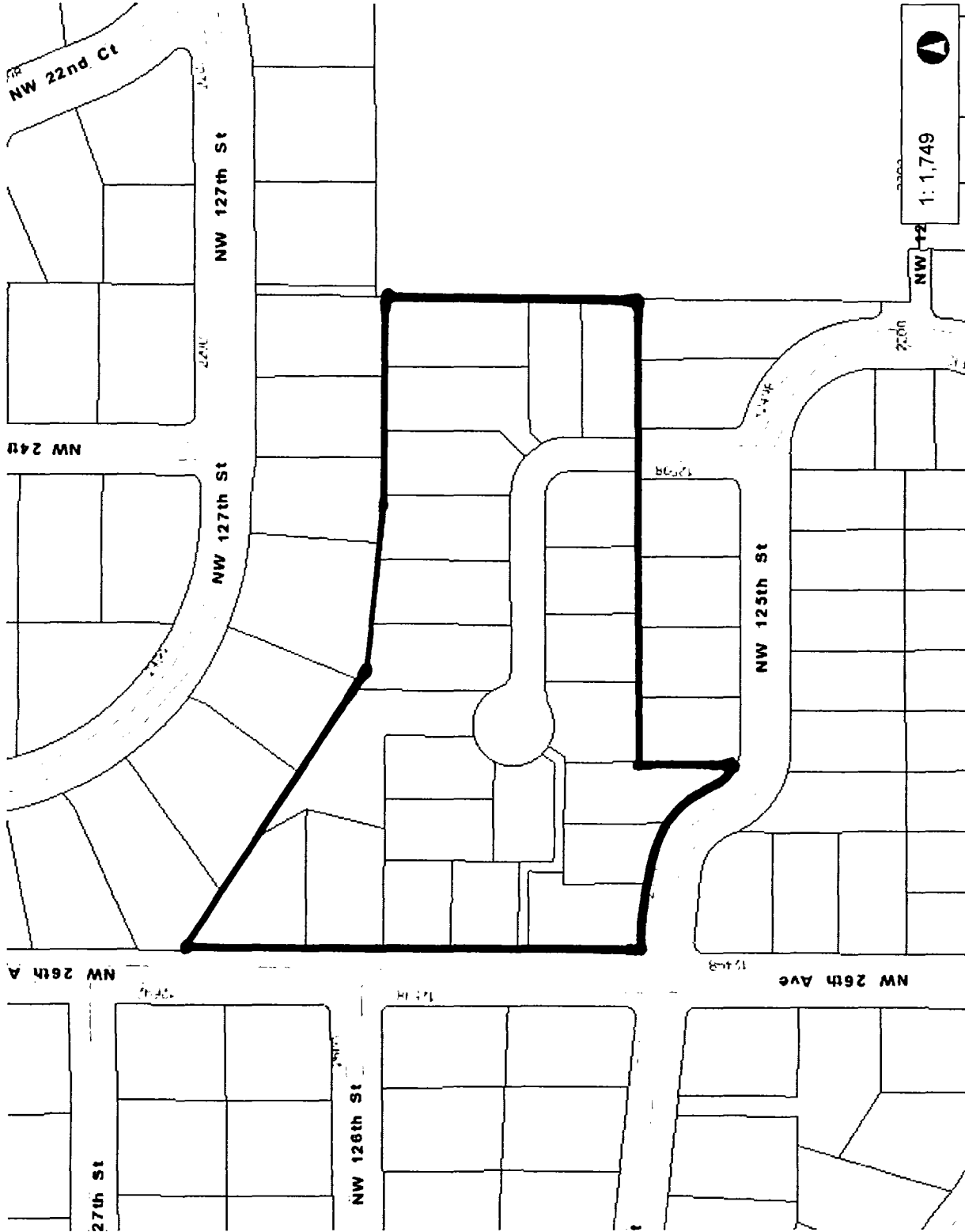


Handwritten initials: MJS
01/14
N

Attachments: A (Vicinity Map)
B (Subdivision Map)



Vicinity Map of Victoria's View



Legend

- Building Footprints
- Taxlots
- World Street Map

Notes:

291.5

145.77

0

291.5 Feet

1:1,749

NW 1-2

27.6h

1.4 h

1.4 h

1.4 h

1.4 h

1.4 h

1.4 h

1.4 h

1.4 h

1.4 h

1.4 h

1.4 h

1.4 h

1.4 h

1.4 h

This map was generated by Clark County's "MapsOnline" website. Clark County does not warrant the accuracy, reliability or timeliness of any information on this map, and shall not be held liable for losses caused by using this information.

WGS_1984_Web_Mercator_Auxiliary_Sphere
Clark County, WA, GIS - <http://gis.clark.wa.gov>

