

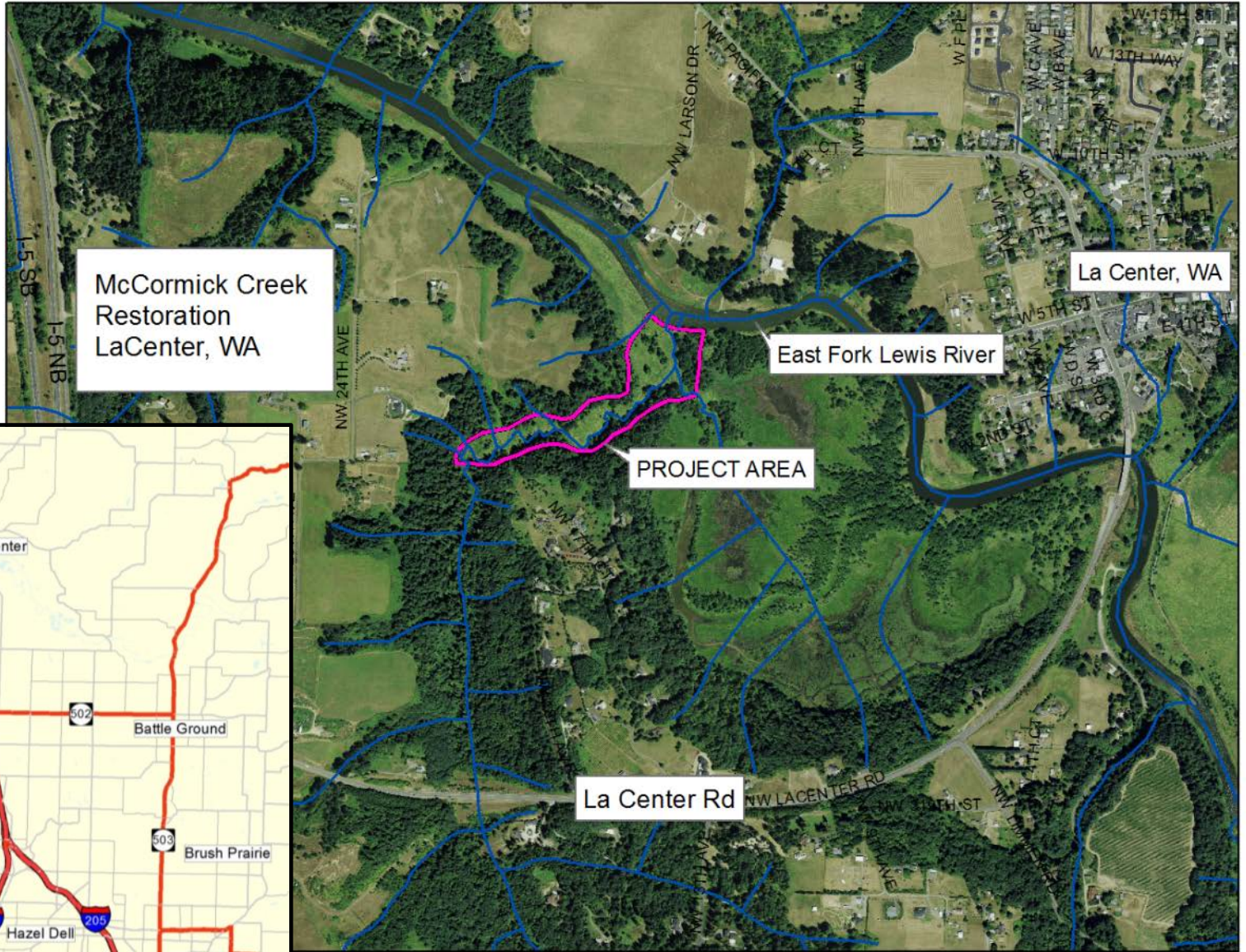
McCormick Creek Restoration



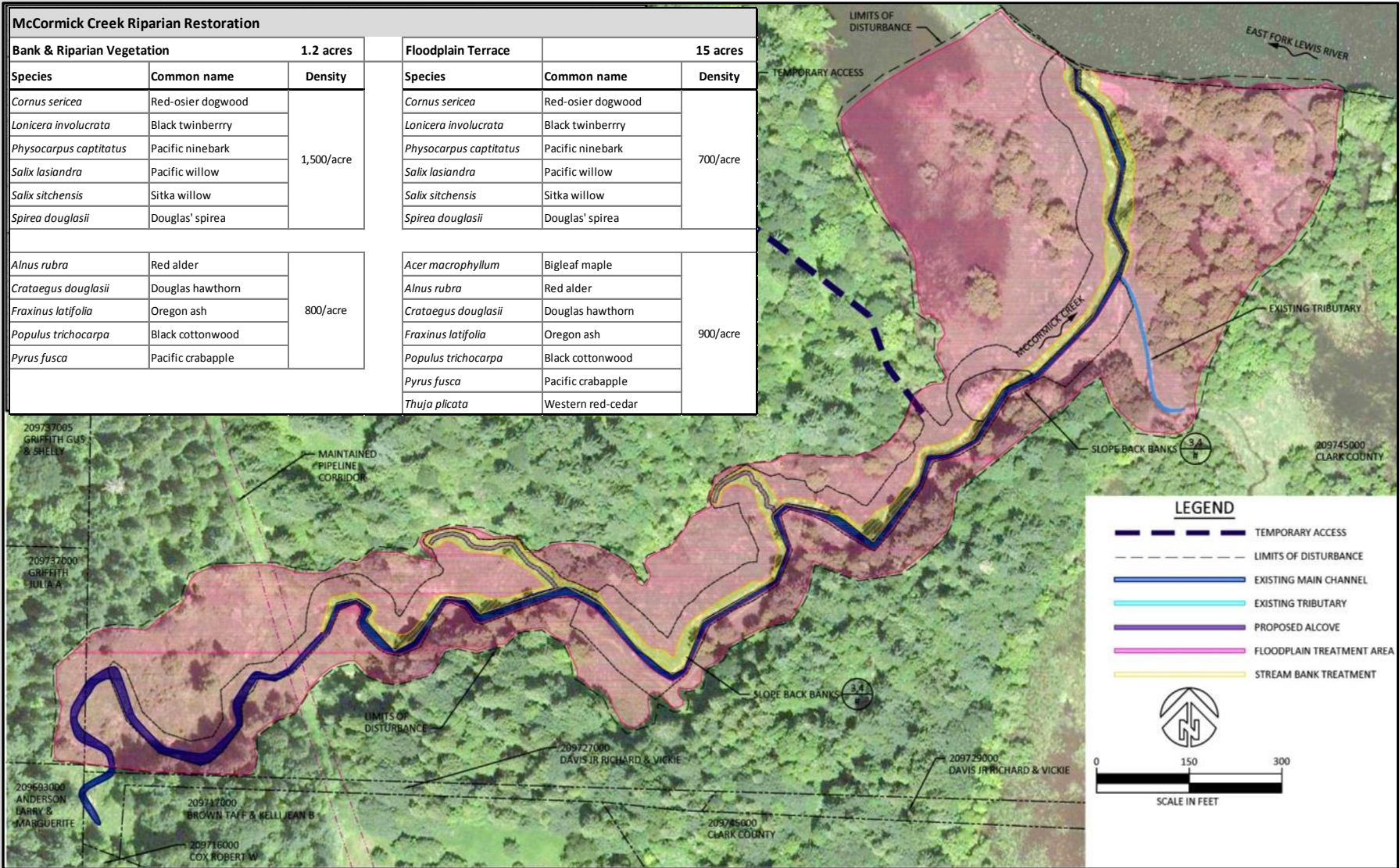
#15-1119

Project Overview

Project Location



Project Site



Biological Objectives

- ▶ McCormick Creek 01 (Tier 2)
 - Received highest score - Lower EF Lewis Assessment
 - Coho
 - Steelhead – upper reaches
 - Chinook – juvenile usage
 - Chum?



Goals / Objectives

- ▶ Create resilient riparian and floodplain plant communities
- ▶ Create in-stream habitat
- ▶ Improve floodplain function
- ▶ Improve water quality impairments impacting salmonids and other aquatic species



Riparian Plantings

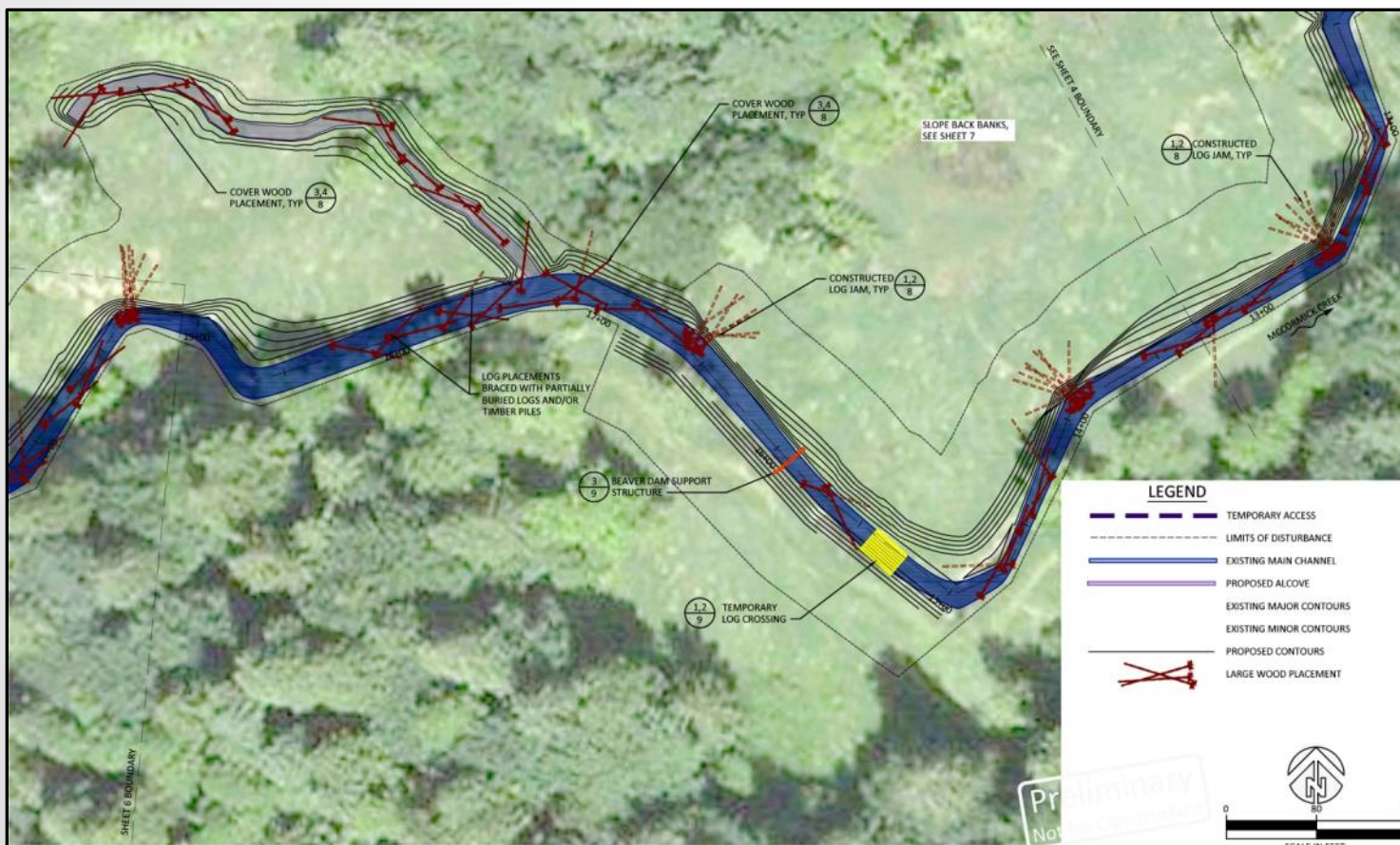
- ▶ 16+ acres
- ▶ ½ mile of stream corridor
- ▶ High density – 1,600 to 2,300 stems/acre
- ▶ Maintenance
- ▶ Beaver
- ▶ Targeted species
- ▶ Long term strategy
- ▶ Replicate Lockwood Creek successes

McCormick Creek Riparian Restoration						
Bank & Riparian Vegetation			1.2 acres	Floodplain Terrace		15 acres
Species	Common name	Density		Species	Common name	Density
<i>Cornus sericea</i>	Red-osier dogwood	1,500/acre		<i>Cornus sericea</i>	Red-osier dogwood	700/acre
<i>Lonicera involucrata</i>	Black twinberry			<i>Lonicera involucrata</i>	Black twinberry	
<i>Physocarpus capitatus</i>	Pacific ninebark			<i>Physocarpus capitatus</i>	Pacific ninebark	
<i>Salix lasiandra</i>	Pacific willow			<i>Salix lasiandra</i>	Pacific willow	
<i>Salix sitchensis</i>	Sitka willow			<i>Salix sitchensis</i>	Sitka willow	
<i>Spirea douglasii</i>	Douglas' spirea			<i>Spirea douglasii</i>	Douglas' spirea	
<i>Alnus rubra</i>	Red alder	800/acre		<i>Acer macrophyllum</i>	Bigleaf maple	900/acre
<i>Crataegus douglasii</i>	Douglas hawthorn			<i>Alnus rubra</i>	Red alder	
<i>Fraxinus latifolia</i>	Oregon ash			<i>Crataegus douglasii</i>	Douglas hawthorn	
<i>Populus trichocarpa</i>	Black cottonwood			<i>Fraxinus latifolia</i>	Oregon ash	
<i>Pyrus fusca</i>	Pacific crabapple			<i>Populus trichocarpa</i>	Black cottonwood	
			<i>Pyrus fusca</i>	Pacific crabapple		
			<i>Thuja plicata</i>	Western red-cedar		



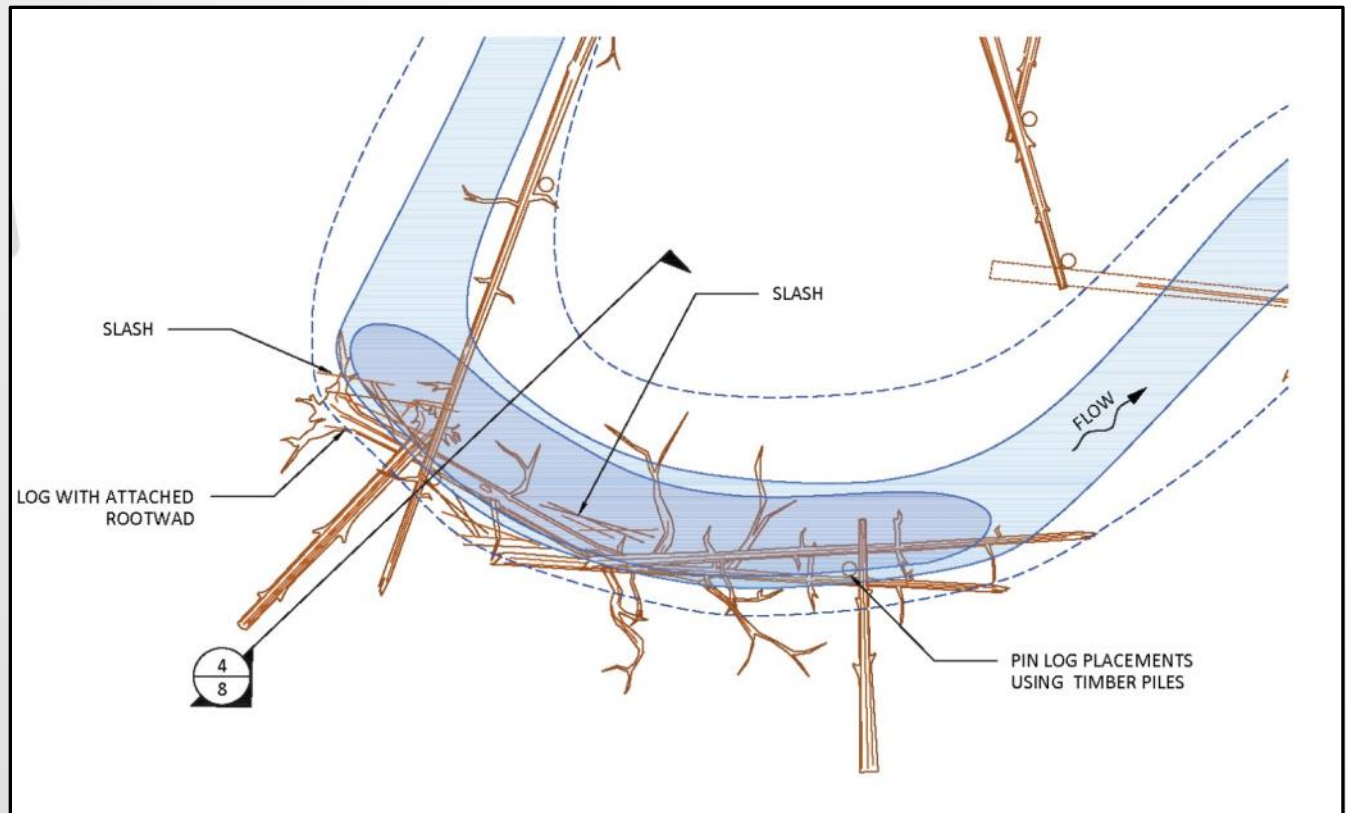
Instream habitat

- ▶ LWD
- ▶ Side channel alcoves



Instream habitat

- ▶ LWD
- ▶ Side channel alcoves





Questions?