

2016 Comprehensive Plan Update

Alternative 4 - Map 1 - Rural Zone Lots Defined as Nonconforming Clark County, Washington

Property Size

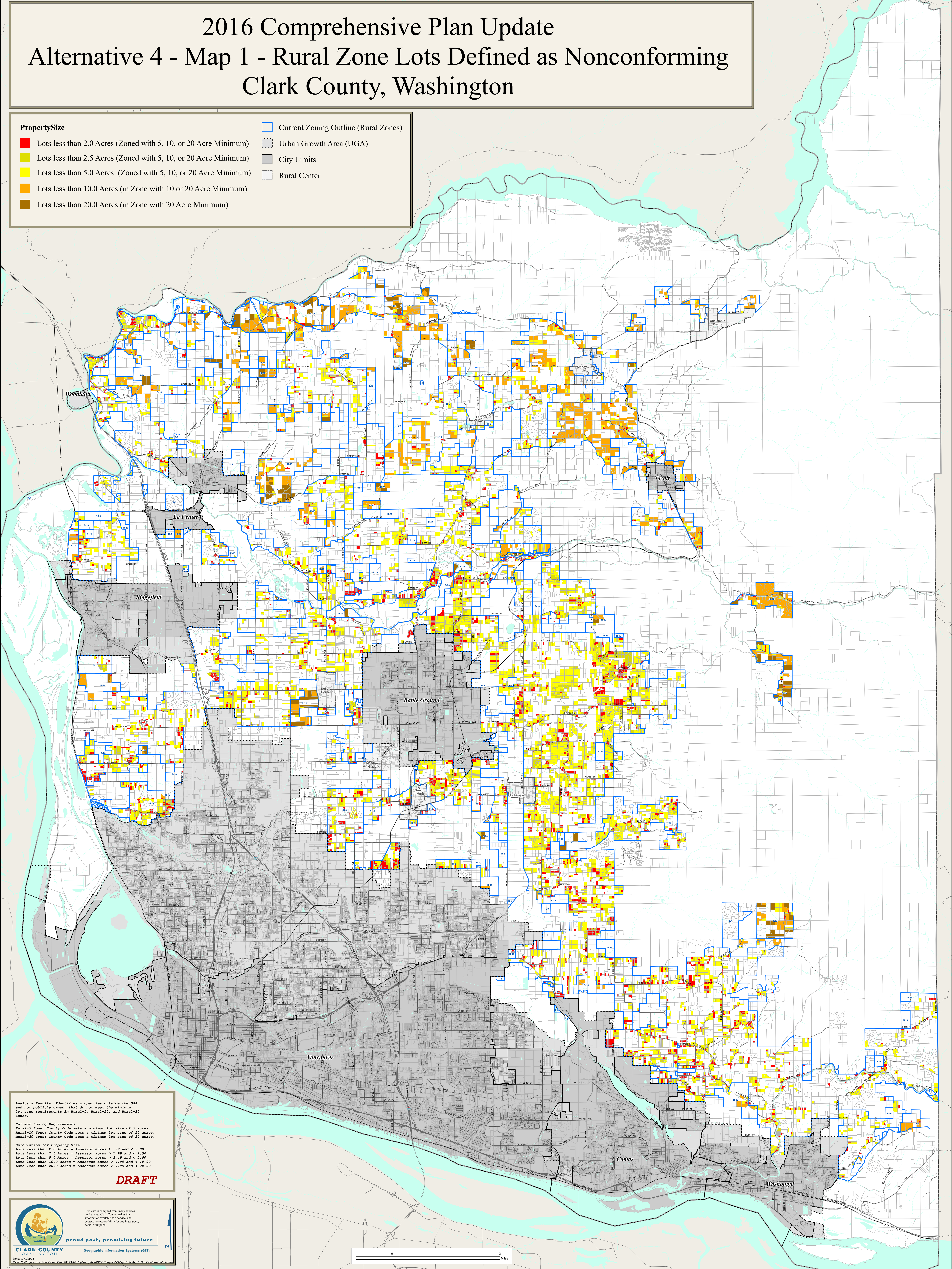
- Red: Lots less than 2.0 Acres (Zoned with 5, 10, or 20 Acre Minimum)
- Yellow: Lots less than 2.5 Acres (Zoned with 5, 10, or 20 Acre Minimum)
- Light Yellow: Lots less than 5.0 Acres (Zoned with 5, 10, or 20 Acre Minimum)
- Orange: Lots less than 10.0 Acres (in Zone with 10 or 20 Acre Minimum)
- Brown: Lots less than 20.0 Acres (in Zone with 20 Acre Minimum)

Blue outline: Current Zoning Outline (Rural Zones)

Dashed line: Urban Growth Area (UGA)

Grey area: City Limits

White square: Rural Center



Analysis Results: Identifies properties outside the UGA and not publicly owned, that do not meet the minimum lot size requirements in Rural-5, Rural-10, and Rural-20 Zones.

Current Zoning Requirements
Rural-5 Zone: County Code sets a minimum lot size of 5 acres.
Rural-10 Zone: County Code sets a minimum lot size of 10 acres.
Rural-20 Zone: County Code sets a minimum lot size of 20 acres.

Calculation for Property Size:
Lots less than 2.0 Acres = Assessor acres > .99 and < 2.00
Lots less than 2.5 Acres = Assessor acres > 1.99 and < 2.50
Lots less than 5.0 Acres = Assessor acres > 2.49 and < 5.00
Lots less than 10.0 Acres = Assessor acres > 4.99 and < 10.00
Lots less than 20.0 Acres = Assessor acres > 9.99 and < 20.00

DRAFT

CLARK COUNTY WASHINGTON
Geographic Information Systems (GIS)
Date: 3/15/2016

This data is compiled from many sources and users. Clark County makes the information available as a service, and accepts no responsibility for any inaccuracies, actual or implied.

1 0 3 Miles