



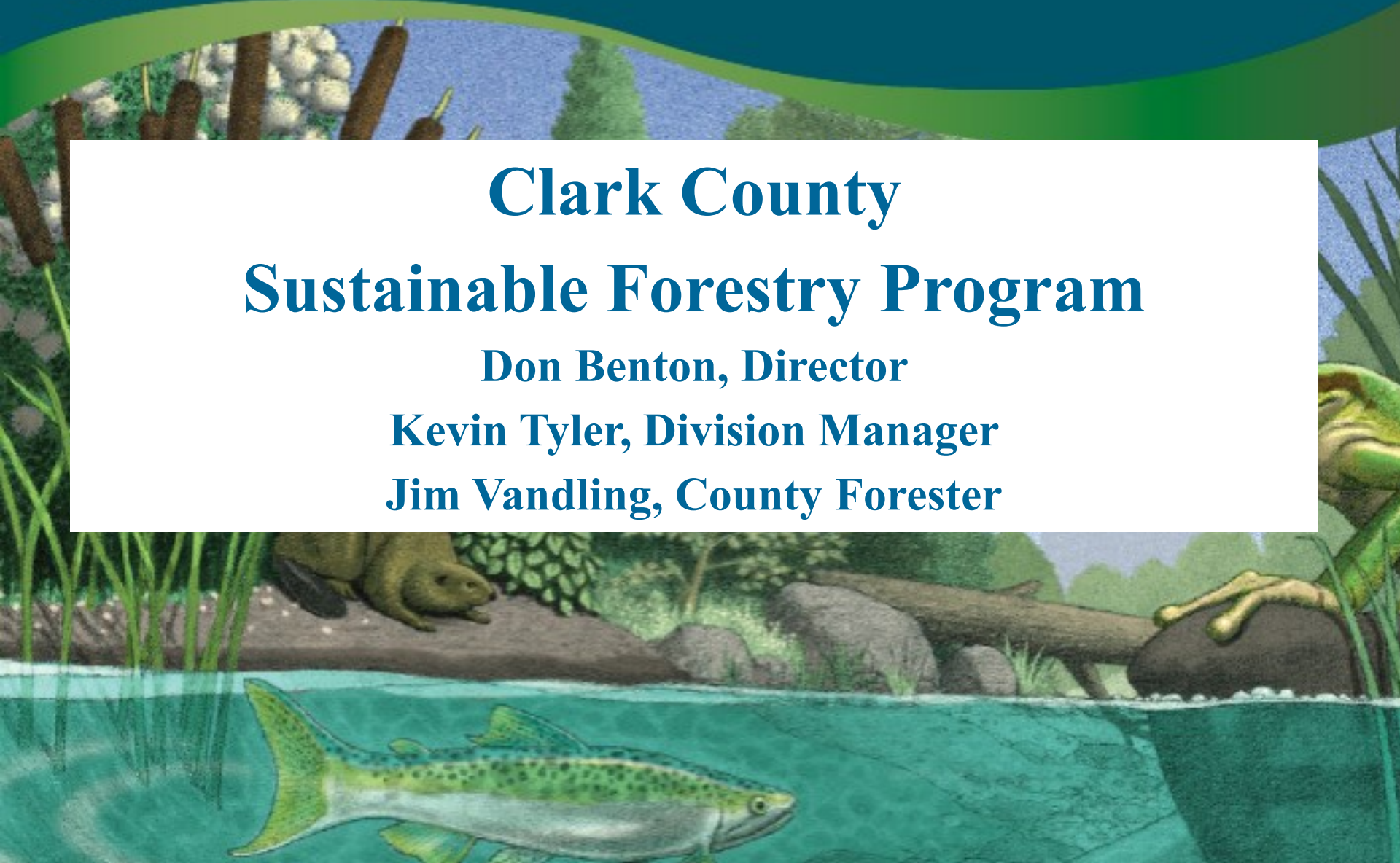
Clark County Environmental Services

Clark County Sustainable Forestry Program

Don Benton, Director

Kevin Tyler, Division Manager

Jim Vandling, County Forester



Sustainable Forestry Program Overview

What is it?

[Clark County Sustainable Forestry](#)

What have we done?

Where are we going?

What do we need from the council?



Unmanaged



Managed

Objectives of Sustainable Forestry Program

Short Term Objectives:

- Enhance forest health and timber productivity
- Improve wildlife habitat
- Control noxious weeds
- Provide revenue to develop program
- Lead by example

Long Term Objectives

- Produce long-term, on-going income through commercial thinning
- Sustain populations of native plants and animals throughout the forest
- Provide for multiple uses on county forest properties
- Protect urban forests from wildfire and provide infrastructure
- Pursue sustainable forestry certifications on new properties



Activities to Date

- **1,833 acres of Camp Bonneville dual certified with Sustainable Forestry Initiative & Forest Stewardship Council**
- **Thinning operations completed on 382 acres at Camp Bonneville, targeting between 10 & 40% of trees**
- **Camp Hope certified by Sustainable Forestry Initiative and 141 MBF thinned to remove hazard trees and improve forest health**
- **360 acres of Green Mountain certified by Forest Stewardship Council and 2,997 MBF thinned from the property**



Budget Overview: Operating Expenses vs. Investments

	2013	2014	2015	Totals
Camp Bonneville				
Revenue	\$ 2,352,185.46	\$ 469,386.02	\$ 6,085.55	\$ 2,827,657.03
Operating Expenses	\$ 544,202.70	\$ 306,593.03	\$ -	\$ 850,795.73
Net Operating Revenue	\$ 1,807,982.76	\$ 162,792.99	\$ 6,085.55	\$ 1,976,861.30
Infrastructure/Investments*	\$ 327,809.19	\$ 151,130.31	\$ 147,529.87	\$ 626,469.37
Total Profit to County	\$ 1,480,173.57	\$ 11,662.68	\$ (141,444.32)	\$ 1,350,391.93
Green Mountain				
Revenue	\$ -	\$ 693,003.15	\$ 1,201,587.47	\$ 1,894,590.62
Operating Expenses	\$ -	\$ 191,596.12	\$ 334,103.29	\$ 525,699.41
Net Operating Revenue	\$ -	\$ 501,407.03	\$ 867,484.18	\$ 1,368,891.21
Infrastructure/Investments*	\$ -	\$ 159,267.48	\$ 119,386.92	\$ 278,654.40
Total Profit to County	\$ -	\$ 342,139.55	\$ 748,097.26	\$ 1,090,236.81
Camp Hope				
Revenue	\$ -	\$ 90,878.95	\$ -	\$ 90,878.95
Operating Expenses	\$ -	\$ 42,276.80	\$ -	\$ 42,276.80
Net Operating Revenue	\$ -	\$ 48,602.15	\$ -	\$ 48,602.15
Infrastructure/Investments*	\$ -	\$ 1,921.62	\$ 40,000.00	\$ 41,921.62
Total Profit to County	\$ -	\$ 46,680.53	\$ (40,000.00)	\$ 6,680.53
Total Profit to County after Infrastructure and Investments				\$ 2,447,309.27

*Includes offsetting general fund expense for salaries, benefits, and overhead.

Infrastructure and other investments

- Replaced 4 bridges at Camp Bonneville with new concrete structures
- Replaced another bridge with a new wood deck
- 5 miles of road infrastructure improvements at Camp Bonneville
- Permanent access through Green Mountain
- Ongoing noxious weed control
- More than 12,000 trees planted at Camp Bonneville and Green Mountain
- Purchased a tractor and ATV for on-going maintenance activities
- Roofing and gutters repaired on 6 buildings at Camp Bonneville
- Offset \$500,000 in general fund expense for DES staff time since 2013
- Master planning process for Camp Hope underway



2016-2021 Planning: Potential Opportunities

Camp Bonneville – Continue with implementation of stewardship plan; inventory and add to certification

Green Mountain – Continue working on implementation of the forest stewardship plan

Camp Hope – Update stewardship plan and support future uses identified in the master plan

Spud Mountain – Inventory, develop management plan, and pursue certification

Pursue sustainable forestry certification on new properties

Sustainable Forestry Programmatic Plan

Benefits:

- Formalizes the goals and objectives for this program
- Creates a template for future additions to the program
- Sets a clear example for other forest land owners
- Provides a 6-year budget outlook, similar to capital plans

Establishes a Set of Guidelines for:

- Timber production
- Conservation & restoration
- Public use
- Working with adjacent landowners
- Research and demonstration



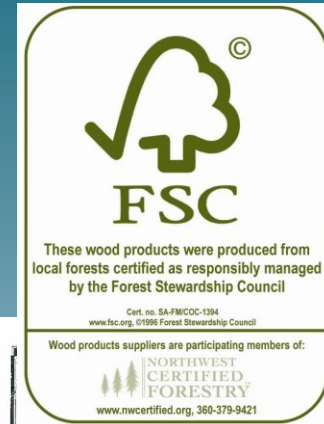
**Programmatic Plan for
Clark County's
Sustainable Forestry
Program**

February 2016



Next Steps

- Public Hearing later this year to formalize the Sustainable Forestry Program with resolution and programmatic plan.
- Seek commitment to ongoing budget separate from the county's general fund to ensure the program has adequate support for future operations.



Thank You

For more information, please refer to the [Environmental Services](#) link on the County webpage

Jim Vandling, County Forester
Kevin Tyler, Division Manager
Don Benton, Director

Environmental Services
Resource Enhancement and Permitting Division
360-397-2121

