

# CLARK COUNTY STAFF REPORT

**DEPARTMENT:** Public Works / Parks Division

**DATE:** November 22, 2016

**REQUESTED ACTION:** Approval for the creation of a new 18-hole Disc Golf Course at Hockinson Meadows Community Park and use of PIF 5 funding for permitting and engineering expenses. Total Expense \$70,469, with \$65,000 coming from PIF 5 and \$5,469 from donations.

Consent     Hearing     County Manager

---

## **PUBLIC WORKS GOALS:**

- Provide safe and efficient transportation systems in Clark County
- Create and maintain a vibrant system of parks, trails and green spaces
- Continue responsible stewardship of public funds
- Promote family-wage job creation and economic development to support a thriving community
- Maintain a healthy, desirable quality of life
- Increase partnerships and foster an engaged, informed community
- Cultivate a nimble, responsive work force
- Make Public Works a great place to work

## **BACKGROUND**

The parks in Clark County offer a wide variety of outdoor recreation opportunities; however, disc golf is currently not one of them. Disc golf is a fun, healthy and environmentally friendly game that encourages outdoor activity, increases the use of public lands and can be played by all ages and abilities. Disc golf is currently one of the fastest growing recreational sports worldwide. The sport has many community benefits, including attracting tournaments and economic revenue, providing low impact exercise and creating greater community engagement. In December 2014, the BOCC approved the installation of an 18-hole disc golf course at Frenchman's Bar Regional Park which will serve West Clark County residents when completed. An undeveloped 40 acre parcel (#200550000) within Hockinson Meadows Community Park was identified as a suitable site to serve Central Clark County residents. Parks currently leases this property for agricultural use; however, because the land is intended to be used for recreational purposes, the lease will be cancelled. Installation and maintenance of the course is inexpensive and will be accomplished primarily through grants, donations and volunteer labor. Permitting fees will be funded through PIF District 5 development funds. Several donations have already been submitted to the Parks Foundation of Clark County to assist in the development and maintenance for disc golf courses on county park lands.

## **COUNCIL POLICY IMPLICATIONS**

No.

## **ADMINISTRATIVE POLICY IMPLICATIONS**

No.

## **COMMUNITY OUTREACH**

The creation of this disc golf course is supported by the Parks Advisory Board and many motivated residents throughout the Greater Clark County area who have a strong interest in seeing disc golf courses installed on county property.

*mjr  
OK*

*PW16-130*

**BUDGET IMPLICATIONS**

YES	NO	
x		Action falls within existing budget capacity.
	x	Action falls within existing budget capacity but requires a change of purpose within existing appropriation
	x	Additional budget capacity is necessary and will be requested at the next supplemental. If YES, please complete the budget impact statement. If YES, this action will be referred to the county council with a recommendation from the county manager.


**BUDGET DETAILS**

Local Fund Dollar Amount	\$65,000
Grant Fund Dollar Amount	\$5,469
Account	PIF District 5 Combined Account
Company Name	Clark County Public Works –Parks Division


**DISTRIBUTION:**

Board staff will post all staff reports to The Grid. <http://www.clark.wa.gov/thegrid/>

Attachments: Map, Property Fact Sheet, Layout Plan

  
 Bill Bjerke  
 Parks Division Manager

  
 Heath H. Henderson  
 Public Works Director/County Engineer

APPROVED:   
 CLARK COUNTY, WASHINGTON  
 BOARD OF COUNTY COUNCILORS  
 DATE: NOV. 22, 2016  
 SR# SR 235-16



## BUDGET IMPACT ATTACHMENT

### Part I: Narrative Explanation

I. A – Explanation of what the request does that has fiscal impact and the assumptions for developing revenue and costing information

Permits will likely be necessary for the development of the disc golf course. These permits will be funded through the PIF District 5 account.

### Part II: Estimated Revenues

Fund #/Title	Current Biennium		Next Biennium		Second Biennium	
	GF	Total	GF	Total	GF	Total
003275/ PIF 5 Combined Account				65,000		
Parks Foundation of Clark County				5,469		
<b>Total</b>				70,469		

II. A – Describe the type of revenue (grant, fees, etc.)

The PIF District 5 combined account will be used for project permitting and engineering. Funding for all physical site improvements will be provided through private donations and funds collected through the Parks Foundation of Clark County. A Parks Foundation Community Grant will be sought in January 2017 to assist with site improvements and course construction.

### Part III: Estimated Expenditures

III. A – Expenditures summed up

Fund #/Title	FTE's	Current Biennium		Next Biennium		Second Biennium	
		GF	Total	GF	Total	GF	Total
003275/ PIF 5 Combined Account					65,000		
Parks Foundation of Clark County					5,469		
<b>Total</b>					70,469		

III. B – Expenditure by object category

Fund #/Title	Current Biennium		Next Biennium		Second Biennium	
	GF	Total	GF	Total	GF	Total
Salary/Benefits				1,500		
Contractual				50,500		
Supplies				15,469		
Travel						
Other controllables				3,000		
Capital Outlays						
Inter-fund Transfers						
Debt Service						
<b>Total</b>				70,469		

40





# Property Fact Sheet for Account 200550000

August 01, 2016

## General Information

Property Account	200550000
Site Address	
Owner	CLARK COUNTY PARKS
Mail Address	4700 NE 78TH ST VANCOUVER WA , 98665 US
Land Use	UNUSED OR VACANT LAND - NO IMPROVEMENTS
Property Status	Active
Tax Status	TOTAL EXEMPTION
1st Line Legal	(HOCKINSON AG) #20 SEC 36 T3N R2EWM 40A (LAND ONLY)
Area (approx.)	1,742,400 sq. ft. / 40 acres

## Assessment (2015 Values for 2016 Taxes)

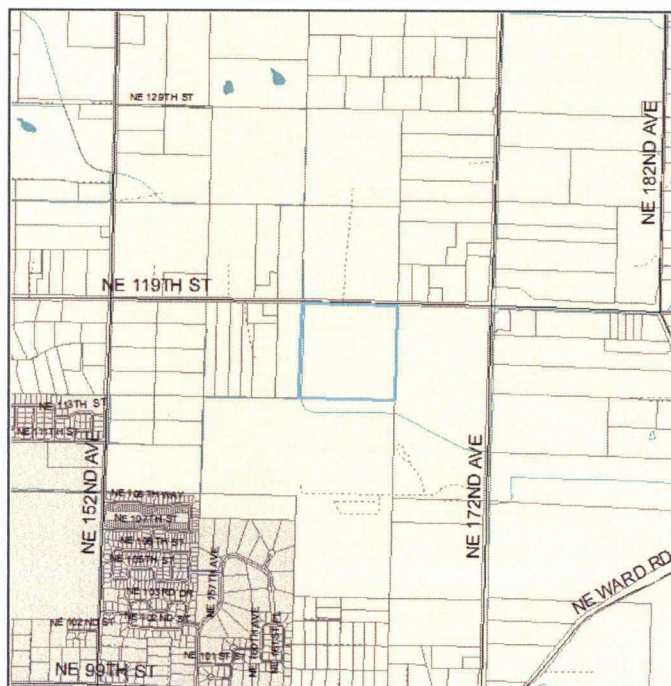
Land Value	\$344,754.00
Building Value	\$0.00
Total Property Value	\$344,754.00
Total Taxable Value	\$0.00

## Most Recent Sale

Sale Date	08/08/2002
Document Type	D-QCD
Sale Number	0503351
Sale Amount	\$0.00

## Administrative

Zoning Designation	Agriculture-20 (AG-20)
Zoning Overlay(s)	none
Comprehensive Plan	Agriculture
Comp. Plan Overlay(s)	none
Census Tract	407.10
Jurisdiction	Clark County
Fire District	FD 3
Park District	n/a
School District	Hockinson
Elementary	Hockinson Heights
Middle School	Hockinson
High School	Hockinson
Sewer District	Rural/Resource
Water District	Clark Public Utilities
Neighborhood	Greater Brush Prairie
Section-Township-Range	NE 1/4,S36,T3N,R2E
Urban Growth Area	County
C-Tran Benefit Area	No
School Impact Fee	Hockinson
Transportation Impact Fee	Rural 1
Transportation Analysis Zone	374
Waste Connections	Wednesday
Garbage Collection Day	
Last Street Sweeping	n/a
CPU Lighting Utility District	0
Burning Allowed	Yes
Wildland Urban Interface/Intermix	No



## Wetlands and Soil Types

Wetland Class	No Mapping Indicators
Wetland Inventory	Presence
Flood Hazard Area	Outside Flood Area
Shoreline Designation	none
Soil Types / Class	Hydric / CwA Non-Hydric / DoB Hydric / MIA
Critical Aquifer Recharge Area	Category 2 Recharge Areas
FEMA Map / FIRM Panel	53011C0384D
Watershed	Lacamas Creek
Sub Watershed	China Ditch

## Geological Hazards

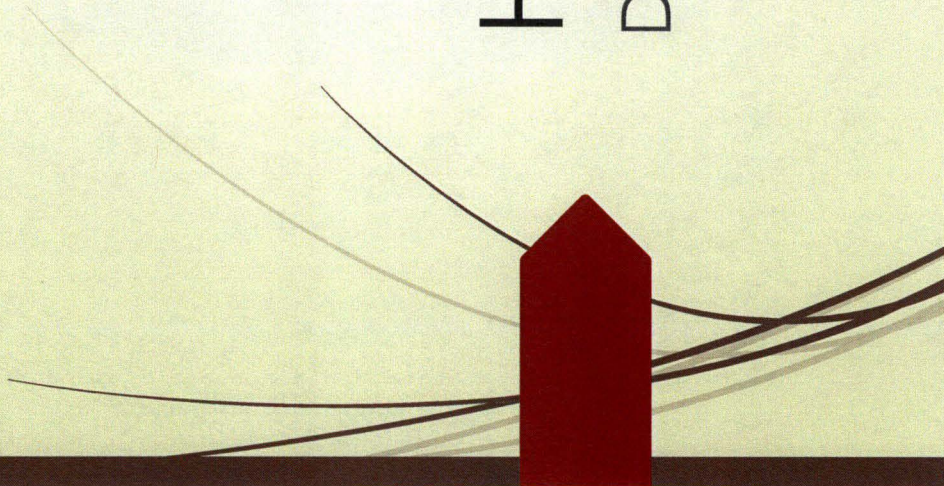
Slope Stability	
Geological Hazard	
NEHRP Class	C
Liquefaction	Low to Moderate Very Low to Low

## Habitat and Cultural Resources

Priority Habitat	Riparian Habitat Conservation Area
Habitat Area Buffer	
Species Area Buffer	
Archaeological Probability	High
Archaeological Site Buffer	Yes
Historic Site	No Mapping Indicators

# HOCKINSON MEADOWS

DISC GOLF PARK





## Why Disc Golf?

- Currently 4 courses in Clark County (3 - 9 hole & 1 - 12 hole course)
- Disc Golf is one of the fastest growing sports in the world
- 76% of the users at Leverich Park are disc golfers (~100/day)
- Disc Golfers will play year around
- Disc Golfers have already raised over \$5,000 for a course in CC
- Disc Golf attracts players regionally
- Local tournaments will draw from hundreds of mile away

# Why Hockinson Meadows

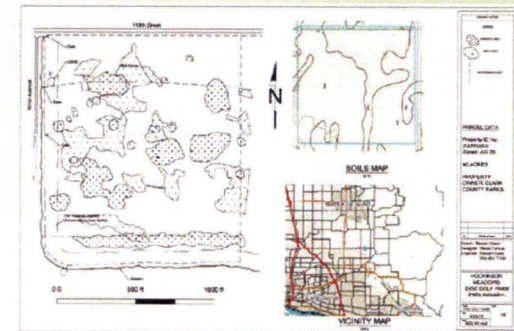
- Centrally located
- Dedicated facility
- Minimal Development Required
- Already looks like a "golf course"

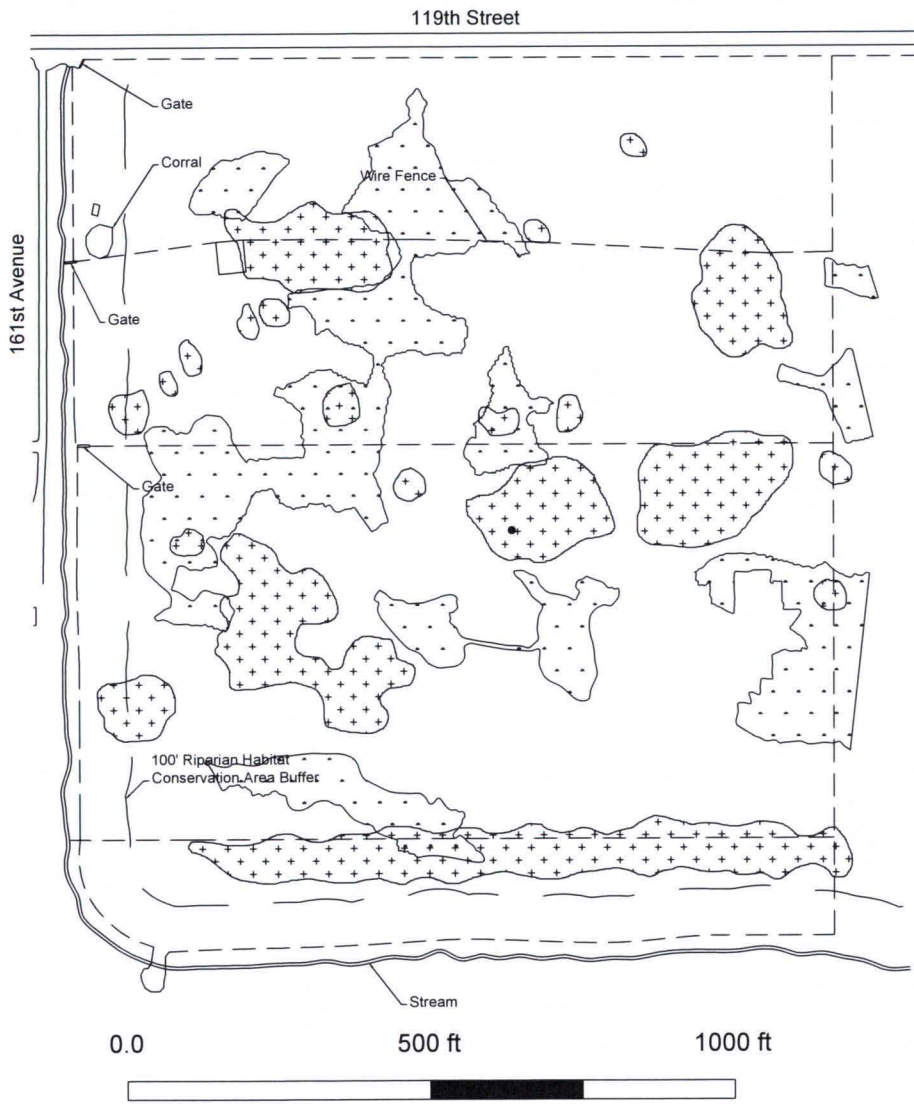




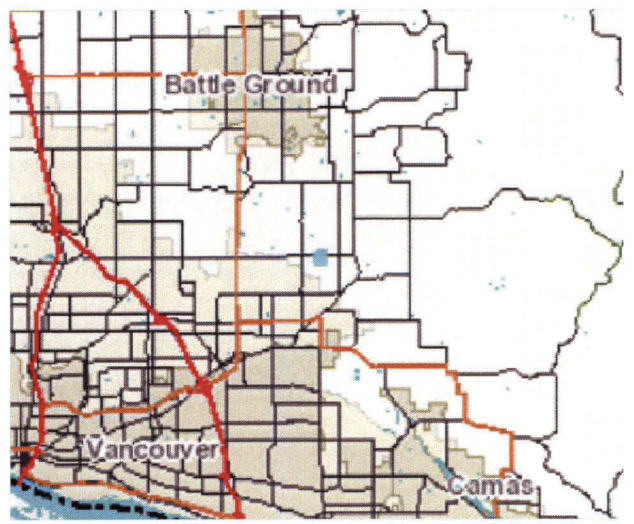
# What's Next

- Determine sensitive areas
- Determine course "flow"
- Design individual holes
- Create a usable "test" course
  - Parking, Restrooms, Temp tees
  - Test the course
- Finish the course
  - Permanent Tees, Benches, Signage
- Link the disc golf park to the rest of the park





**SOILS MAP**  
NTS



**VICINITY MAP**  
NTS

**GENERAL NOTES**

**LEGEND**

- WOODED AREA
- WETLANDS
- BUFFER BOUNDARY

**PARCEL DATA**

Property ID No.: 200550000  
Zoned: AG-20

40 ACRES

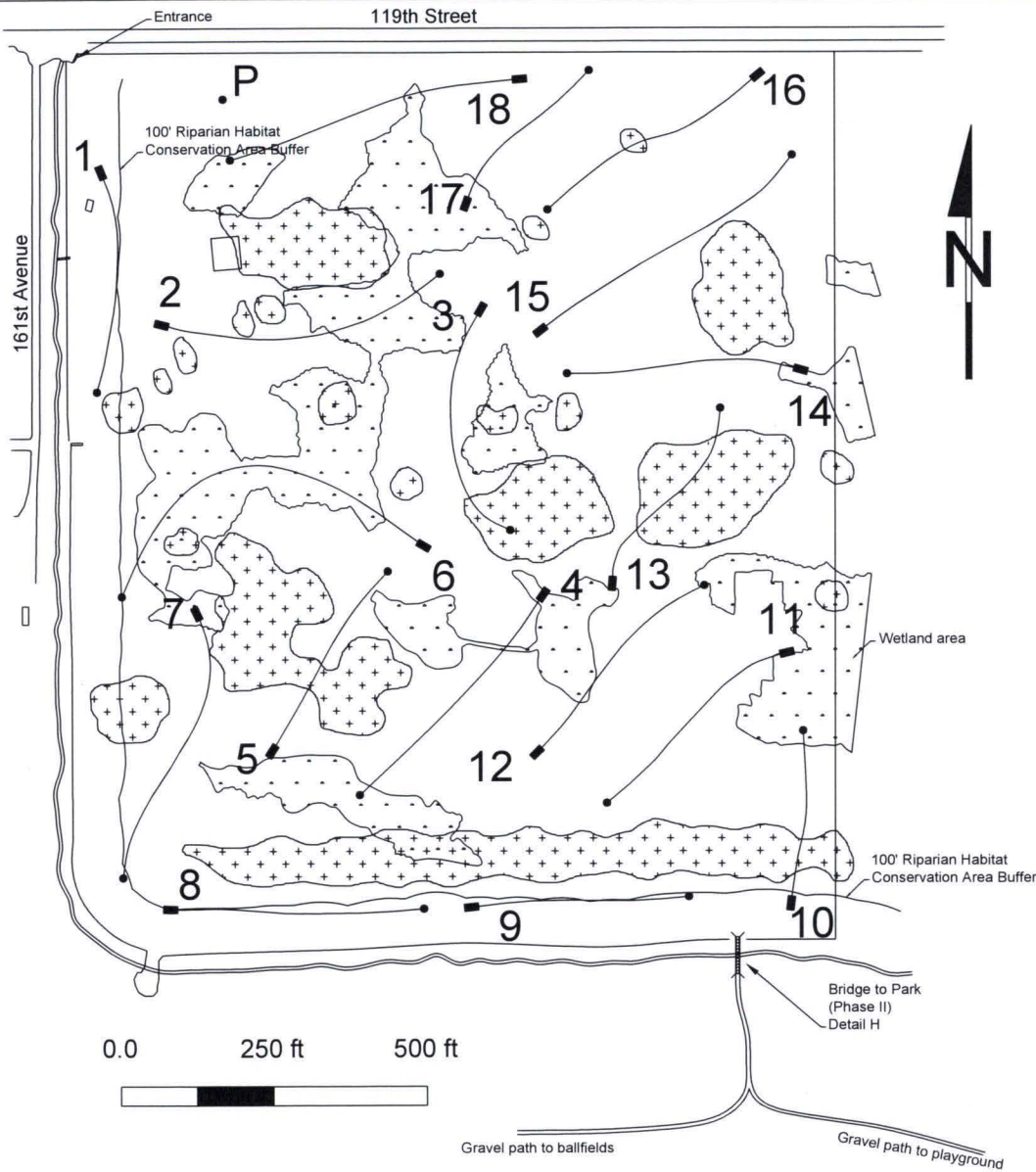
PROPERTY OWNER: CLARK COUNTY PARKS

No.	Revision/Issue	Date

Drawn: Steven Owen  
Designer: Steve Carson  
Engineer: Steven Owen  
360-831-7180

**HOCKINSON MEADOWS DISC GOLF PARK -PRELIMINARY-**

Project: DISC GOLF PARK	Sheet:
Date: 6/26/16	1/8
Scale: SEE SCALE	



Hockinson Meadows Disc Golf Course				
Hole	Length (ft)	Par	Mowed	
			Fairway Area (sq ft)	Fairway Area (acres)
1	355	4	17750	0.41
2	471	4	23550	0.54
3	397	4	19850	0.46
4	431	4	21550	0.49
5	338	4	16900	0.39
6	624	5	31200	0.72
7	457	4	22850	0.52
8	403	4	20150	0.46
9	343	4	17150	0.39
10	273	3	13650	0.31
11	376	4	18800	0.43
12	378	4	18900	0.43
13	339	4	16950	0.39
14	371	4	18550	0.43
15	491	4	24550	0.56
16	398	3	19900	0.46
17	290	3	14500	0.33
18	481	4	24050	0.55
Total	7216	70	360800	8.28

Walking length between baskets and tee-pads: 2,278 FT

Total walking length of course: 9,494 ft = 1.8 miles (2.9 km)

**HOCKINSON MEADOWS DISC GOLF COURSE NOTES**

1. Fences and roads and any other obstacle that forms an obvious boundary will be out of bounds.
2. All wetland type areas (i.e. any areas that hold water during the Winter months and off-season) are out of bounds and generally off limits. These areas will be marked as sensitive to habitat to encourage people not to enter them. It is likely that golfers will encroach into these areas when hunting for errant discs.
3. Fairway grass will be moved to a height of 6 inches at the discretion of the County.
4. Interior fences will be removed at the discretion of the County.
- 5 Phase II option is to add a footbridge connecting the course to Hockinson Meadows park.

GENERAL NOTES

LEGEND

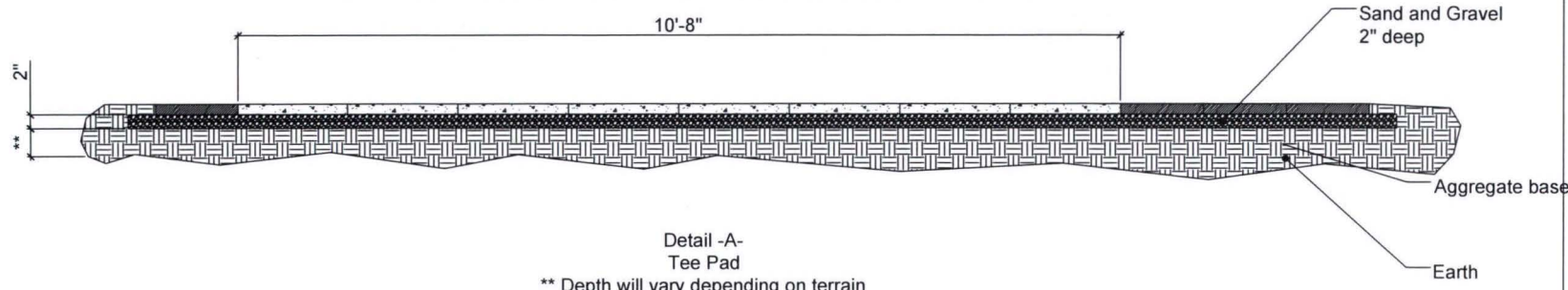
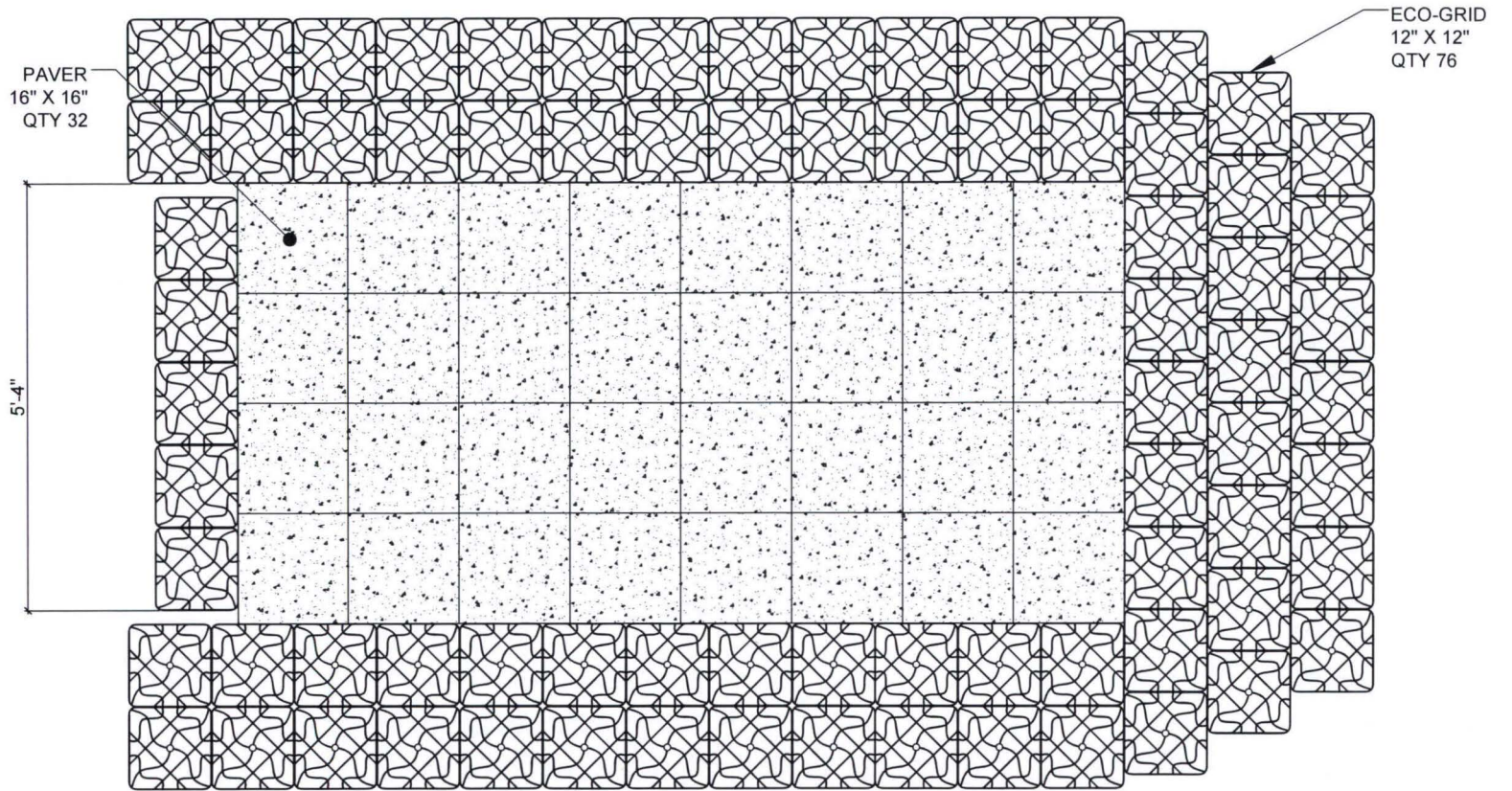
- BASKET
- TEE PAD
- WOODED AREA
- FOOTBRIDGE
- WETLANDS

No.	Revision/Issue	Date

Drawn: Steven Owen  
Checked: Steve Carson  
Engineer: Steven Owen  
360-831-7180

HOCKINSON MEADOWS DISC GOLF PARK -PRELIMINARY-

Project: DISC GOLF PARK	Sheet:
Date: 6/26/16	2/8
Scale: SEE SCALE	



Detail -A-  
Tee Pad  
\*\* Depth will vary depending on terrain  
SCALE 1-1/2" = 1'

GENERAL NOTES

LEGEND

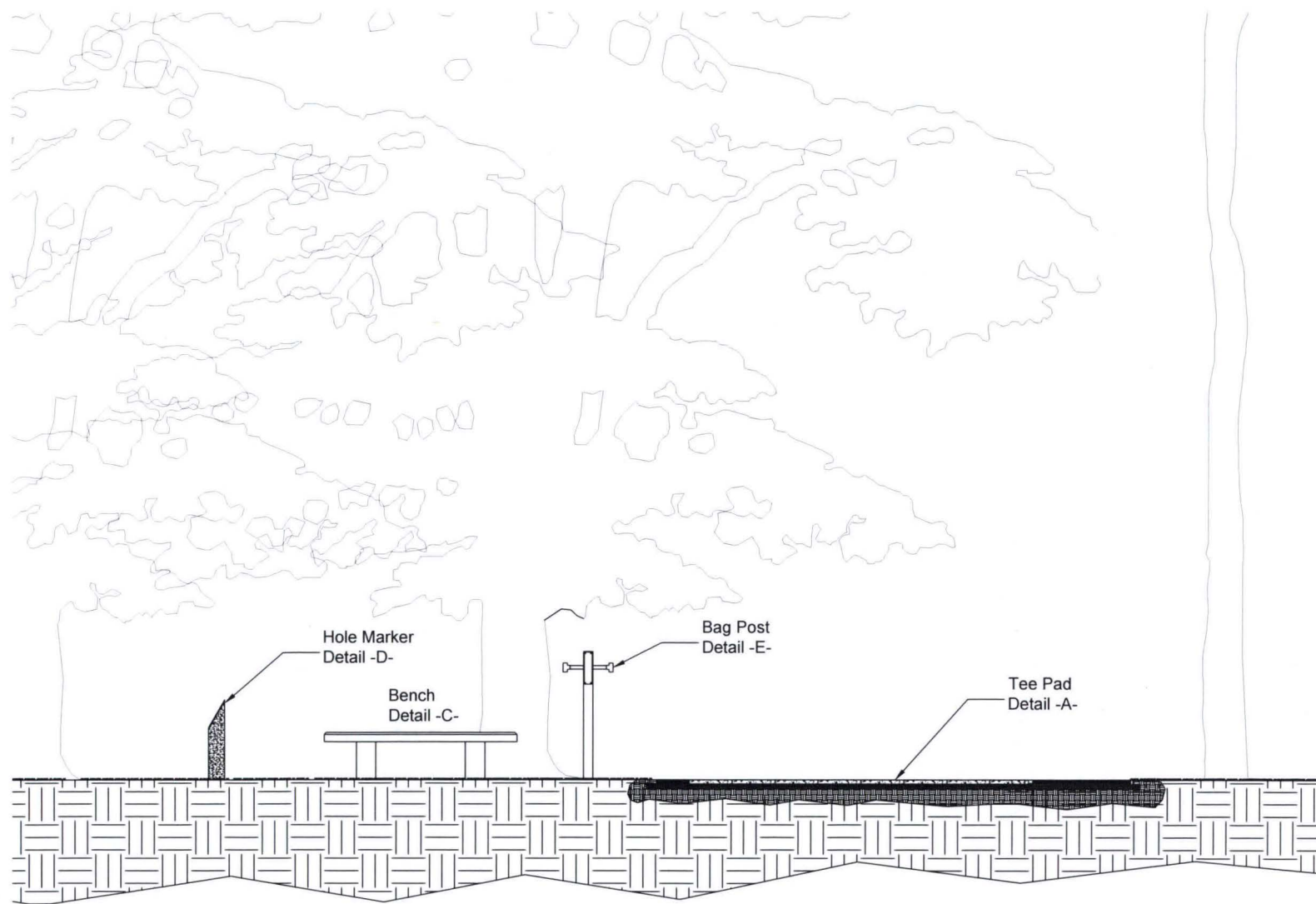
- MOWED AREA
- BASKET
- TEE PAD
- PRACTICE BASKET
- WET AREA

No.	Revision/Issue	Date

Drawn: Steven Owen  
Checked: Steve Carson  
Engineer: Steven Owen  
360-885-1617

**Hockinson Meadows  
DISC GOLF PARK  
CONSTR. DETAILS**

Project DISC GOLF PARK	Sheet 3/8
Date 6/26/16	
Scale SEE SCALE	



Elevation -A-  
 Hole #9 Tee Pad Looking North  
 SCALE: 3/4" = 1'

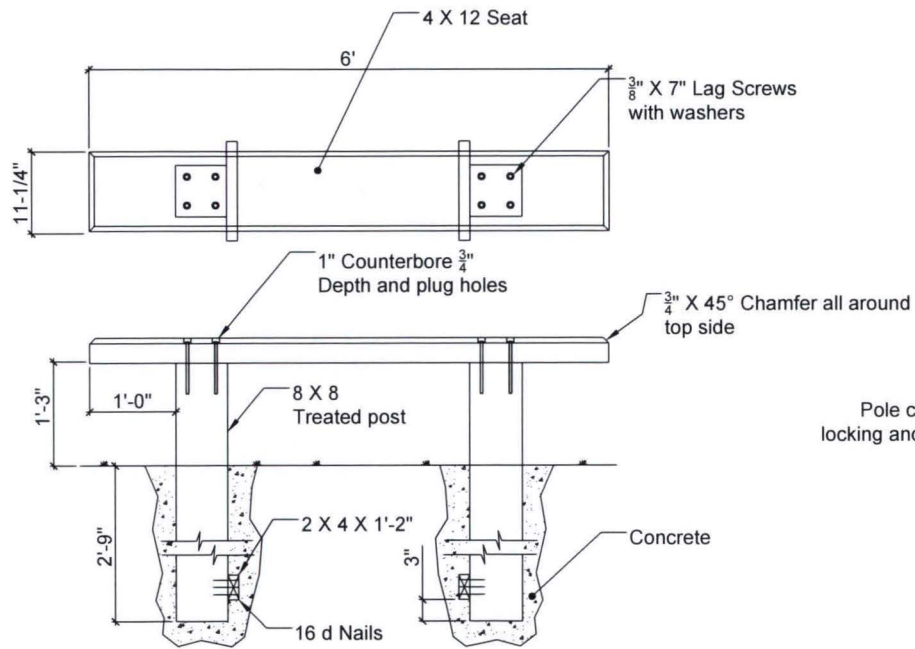
GENERAL NOTES

No.	Revision/Issue	Date

Drawn: Steven Owen  
 Checked: Steve Carson  
 Engineer: Steven Owen  
 360-885-1617

Hockinson Meadows  
 ELEVATION

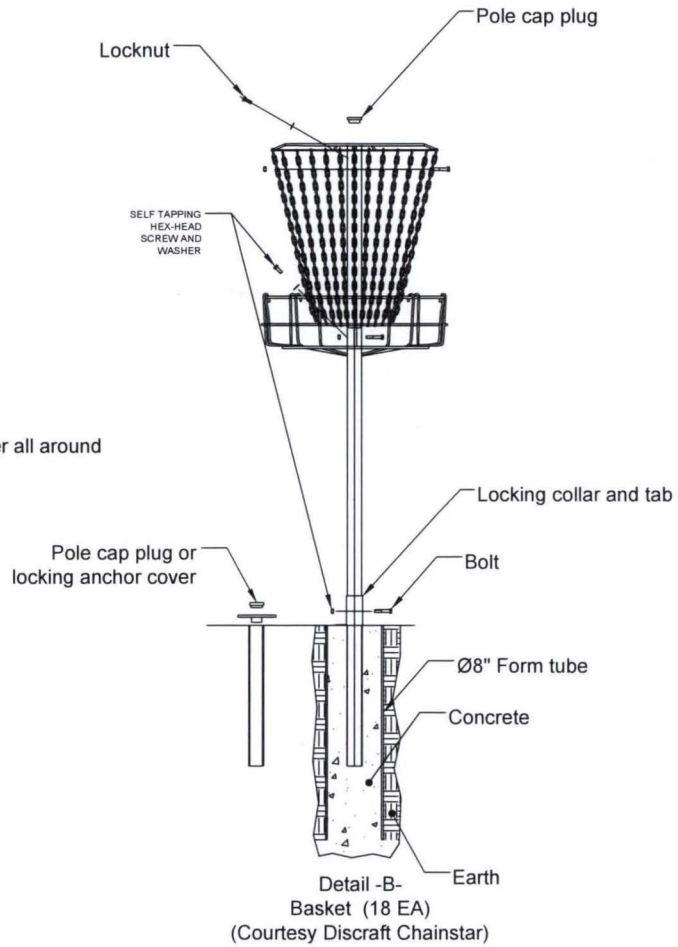
Project	Sheet
DISC GOLF PARK	4/8
Date	6/26/16
Scale	SEE SCALE



Detail -C-  
Bench (9 EA)

SCALE 1-1/2" = 1'

1. Posts shall be placed in hand dug or augered holes
2. Seat surface shall be sanded smooth.
3. Fasteners shall be galvanized.



SCALE: 1-1/2" = 1'

GENERAL NOTES

General Notes

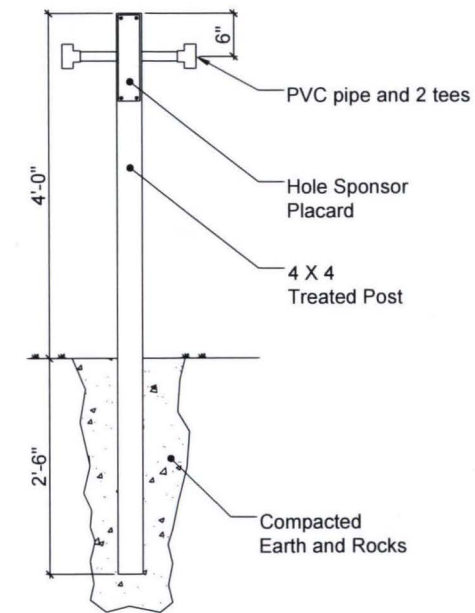
1. Tee pad locations will be graded and leveled prior to installation of tee pad. Compacted gravel may need to be laid as substrate to pour concrete, in some cases. Tee pads are to be 5' x 10' poured concrete with textured surface.
2. Baskets will be installed using steel sleeves installed in concrete per manufacturer specifications.
3. Each tee-pad area will include: tee-pad, bench, bag holder and concrete marker.
4. Each hole will have an alternate basket location with a sleeve installed so the basket location can be rotated.

No.	Revision/Issue	Date

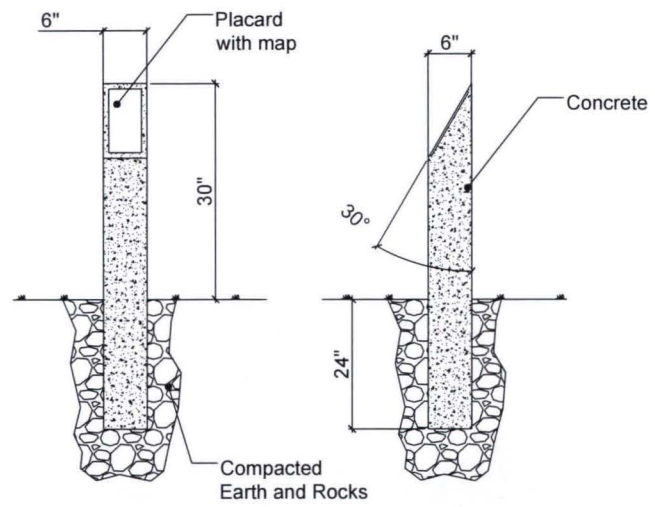
Drawn: Steven Owen  
Checked: Steve Carson  
Engineer: Steven Owen  
360-885-1617

Hockinson Meadows  
DISC GOLF PARK  
CONSTR. DETAILS

Project	Sheet
DISC GOLF PARK	5/8
Date: 6/26/16	
Scale: SEE SCALE	



Detail -E-  
Bag Post  
Located next to each Tee-Pad  
(18 EA)  
SCALE: 1-1/2" = 1'



Front View      Detail -D-  
Hole Marker (18 EA)  
One Located next to each Tee-Pad  
SCALE: 1-1/2" = 1'

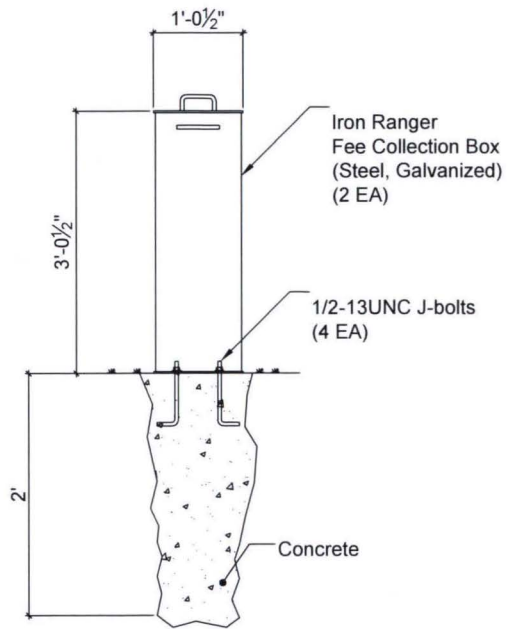
GENERAL NOTES

No.	Revision/Issue	Date

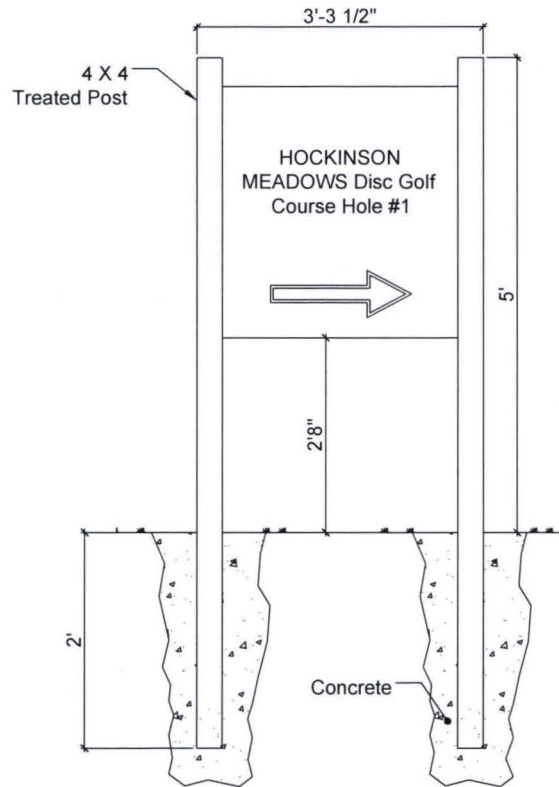
Drawn: Steven Owen  
Checked: Steve Carson  
Engineer: Steven Owen  
360-885-1617

Hockinson Meadows  
DISC GOLF PARK  
CONSTR. DETAILS

Project DISC GOLF PARK	Sheet 6/8
Date 6/26/16	
Scale SEE SCALE	



Detail -G-  
Fee Collection Box  
SCALE: 3/4" = 1'



DETAIL -F-  
Disc Golf Course Sign  
Located inside North entrance

SCALE: 1-1/2" = 1'

GENERAL NOTES

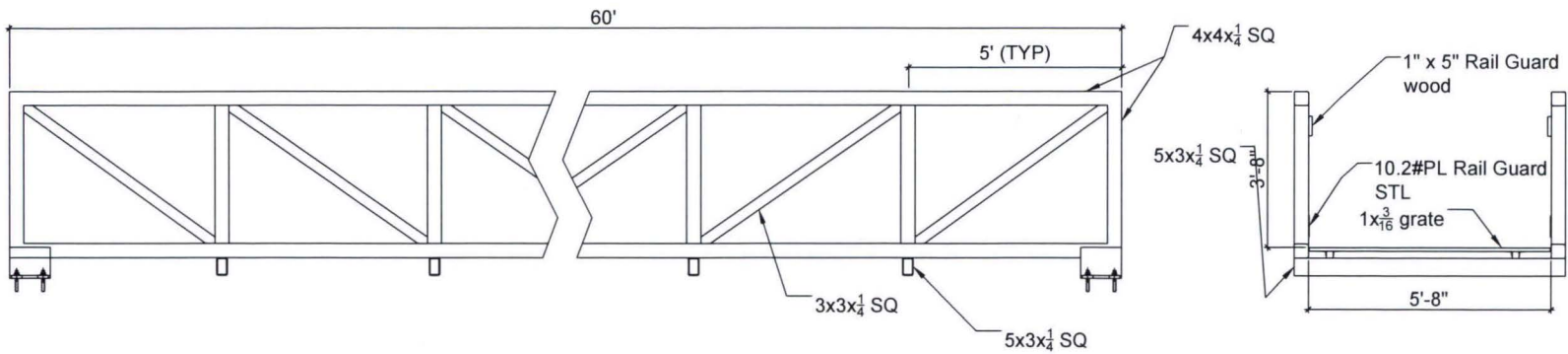
No.	Revision/Issue	Date

Drawn: Steven Owen  
Checked: Steve Carson  
Engineer: Steven Owen  
360-885-1617

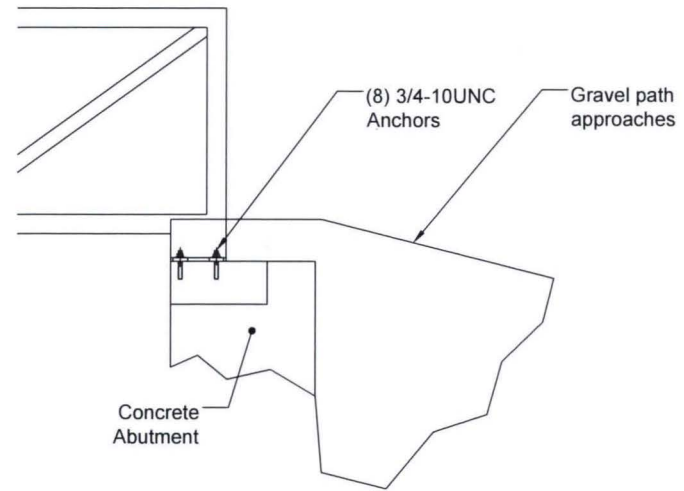
Hockinson Meadows  
DISC GOLF PARK  
CONSTR. DETAILS

Project DISC GOLF PARK	Sheet 7/8
Date 6/26/16	
Scale SEE SCALE	





Detail -H1-  
Foot Bridge  
(Ref: Contech Bridge Solutions Inc.)  
SCALE: 3/4" = 1'



Detail -H2-  
Abutment  
SCALE: 1" = 1'

HOCKINSON MEADOWS DISC GOLF COURSE FOOTBRIDGE NOTES

1. Phase 2: Installation of footbridge to allow direct access from Hockinson Meadows park
2. Nominal design attributes: 90 psf with 1000 lb mid-span point load.
3. Width and approaches to be ADA compliant.
4. Overall length approximate until further study can be done.
5. Material: ASTM A36 Steel

GENERAL NOTES

No.	Revision/Issue	Date

Drawn: Steven Owen  
Checked: Steve Carson  
Engineer: Steven Owen  
360-885-1617

Hockinson Meadows  
DISC GOLF PARK  
CONSTR. DETAILS

Project DISC GOLF PARK	Sheet 8/8
Date 6/26/16	
Scale SEE SCALE	