



Sustainable Forestry Program

Presentation to Board of County Councilors | April 12, 2017

Hunter Decker, County Forester; Jim Vandling, County Forester; Kevin Tyler, Lands Manager

Sustainable Forestry Program

We have the following objectives for today's work session:

- Overview of the program:
 1. What is sustainable forestry?
 2. Why do we have a program?
 3. What have we been doing?
- Comprehensive Forest Management Plan
 1. Update plan and expand program
 2. Council commitment to the plan

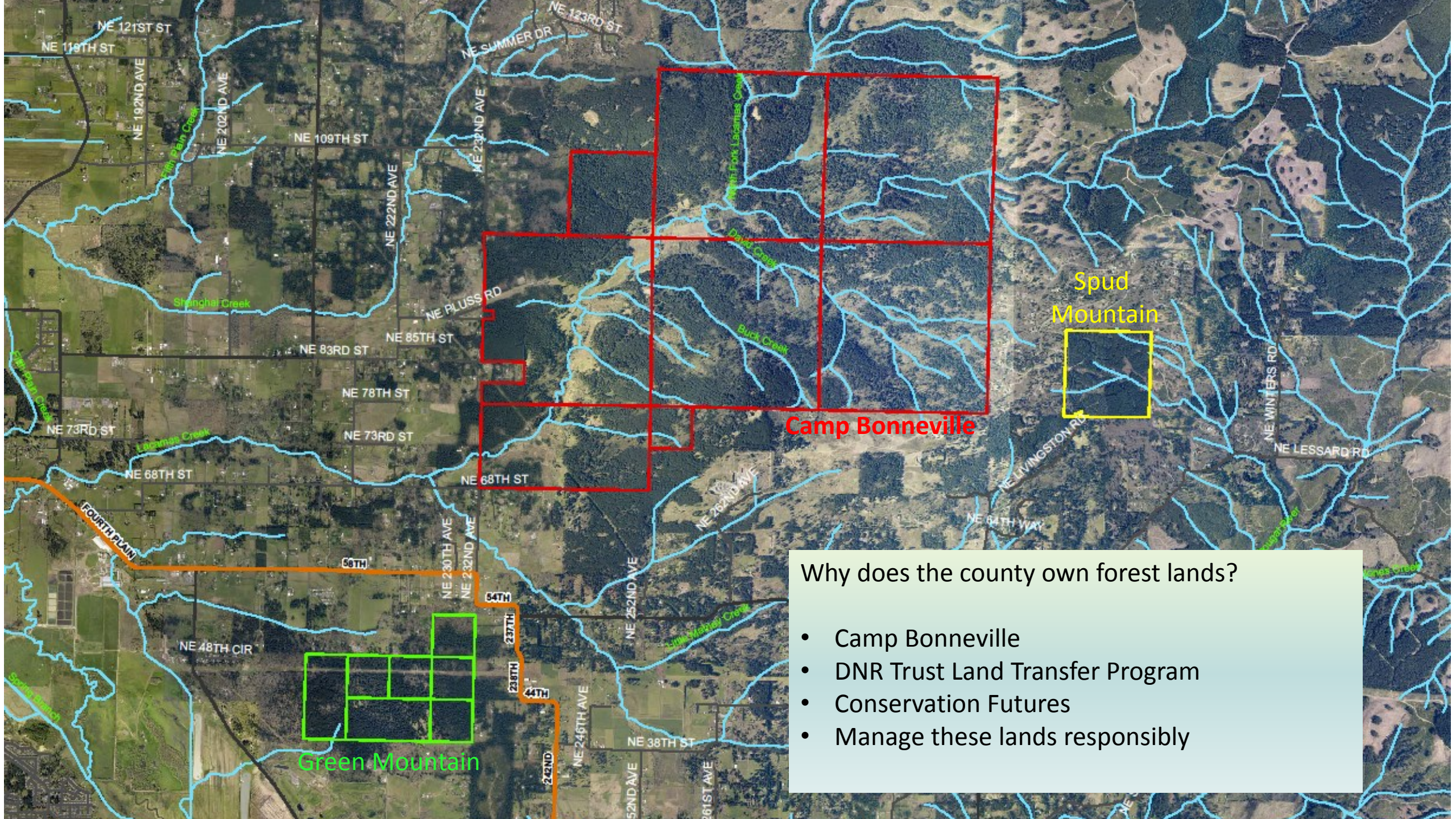


Sustainable Forestry Program

What is Sustainable Forestry?

- Responsible stewardship for future generations
- Promoting forest health
- Managing for conservation and recreation
- Generating some revenue
- It is not clear-cutting
- It is not timber management





Why does the county own forest lands?

- Camp Bonneville
- DNR Trust Land Transfer Program
- Conservation Futures
- Manage these lands responsibly

Sustainable Forestry Program History

- Program started in 2011 with Camp Bonneville
- Developed a stewardship plan
- Pursued certification under the Forest Stewardship Council & Sustainable Forestry Initiative
- Started remedial actions to improve forest health (i.e. thinning)
- Added Green Mountain and Camp Hope to the program in 2014-2015
- Completed some remedial actions at these properties
- Obtained Spud Mountain through Trust Land Transfer Program



Sustainable Forestry Program Results



Green Mountain showing conditions prior to thinning on the left and conditions post-thinning on the right.

Actions Taken to Date

Remedial thinning operations completed on:

- 382 acres at Camp Bonneville
- Immediate vicinity of Camp Hope
- 360 acres of Green Mountain targeting 2,997,000 board feet
- Initial stand inventories completed on Spud Mountain, Lake Rosannah, Bratton Canyon, and on the remainder of Camp Bonneville



What has the revenue been used for?

- Program is entirely self-sufficient; no impact on general fund
- Replaced 4 bridges at Camp Bonneville with new concrete structures
- Replaced another bridge with a new wood deck
- 5 miles of road infrastructure improvements at Camp Bonneville
- Permanent access through Green Mountain
- Ongoing noxious weed control
- More than 12,000 trees planted at Camp Bonneville and Green Mountain
- Purchased a tractor, ATV, and new truck for forester
- Roofing and gutters repaired on 6 buildings at Camp Bonneville
- Master planning process for Camp Hope underway



Comprehensive Forest Stewardship Plan

Update forest stewardship plans and consolidate under a comprehensive plan covering all properties.

- Camp Bonneville
- Green Mountain
- Camp Hope
- Spud Mountain (new)
- Lake Rosannah (new)
- Bratton Canyon (new)



CLARK COUNTY FOREST STEWARDSHIP PLAN

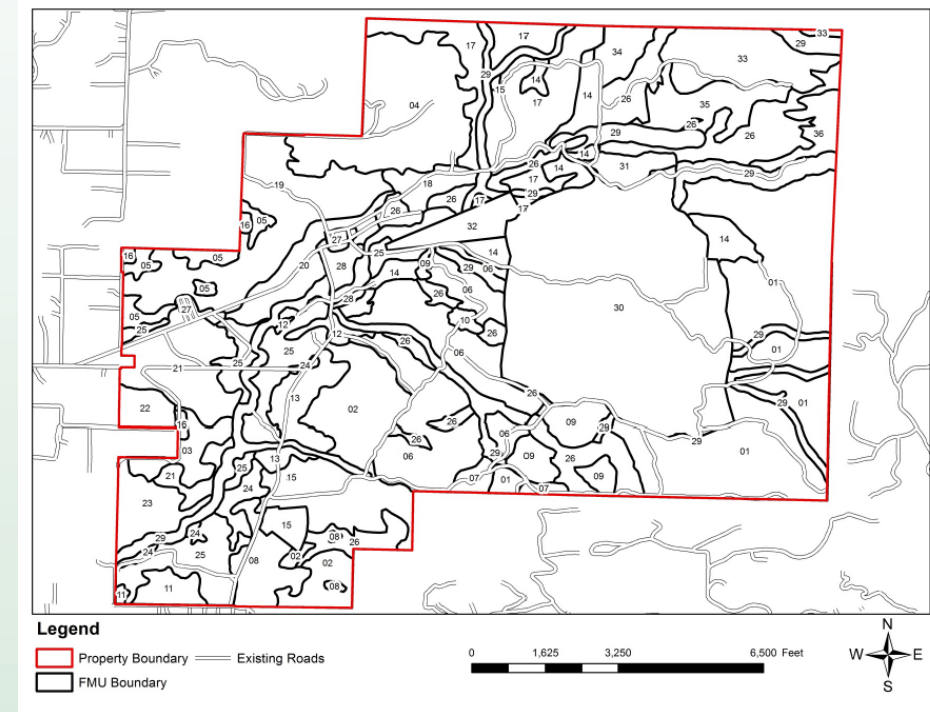


This document serves as the Master Forest Management Plan for Clark County and addresses 6 forest management units totaling ~4,504 acres

Comprehensive Forest Stewardship Plan

What does the plan cover:

- Goals and guiding principles
- Short-term and long-term objectives
- Property and landscape descriptions
- Forest management prescriptions



Comprehensive Forest Stewardship Plan

6-year operating plan to accomplish priority tasks

- Continued remedial thinning at Camp Bonneville
- Commercial thinning and under planting at several properties
- Habitat enhancements, riparian zone conversions, and stand conversions



Past Timber Revenue

Actual revenue and expense can be used to anticipate our work over the next 6 years.

Sustainable Forestry Program: Revenues vs. Expenses					
	2012-2013	2014	2015	Totals	Net Revenue
Camp Bonneville					
Revenue	\$ 2,352,185.46	\$ 469,386.02	\$ 6,085.55	\$ 2,827,657.03	
Expenses	\$ 872,011.89	\$ 457,723.34	\$ 147,529.87	\$ 1,477,265.10	\$ 1,350,391.93
Green Mountain					
Revenue	\$ -	\$ 693,003.15	\$ 1,201,587.47	\$ 1,894,590.62	
Expenses	\$ -	\$ 350,863.60	\$ 453,490.21	\$ 804,353.81	\$ 1,090,236.81
Camp Hope					
Revenue	\$ -	\$ 90,878.95	\$ -	\$ 90,878.95	
Expenses	\$ 627.43	\$ 43,570.99	\$ 40,000.00	\$ 84,198.42	\$ 6,680.53
Total Net Revenue					\$ 2,447,309.27



Comprehensive Forest Stewardship Plan

Requesting from the council

1. Seeking guidance for the program
2. Review of the stewardship plan
3. Support and adoption of plan later this year



Clark County Sustainable Forestry Program

Questions:

Hunter Decker, County Forester

hunter.decker@clark.wa.gov

360-397-6118 x4852

Jim Vandling, County Forester

jim.vandling@clark.wa.gov

360-397-6118 x4714

<https://www.clark.wa.gov/public-works/sustainable-forestry-program>

